

# Advancing the Basin-Boundary Regional Food System



COLUMBIA BASIN  
**RDI**  
RURAL DEVELOPMENT INSTITUTE

Dr. Terri MacDonald  
Regional Innovation Chair  
Selkirk College

# The Columbia Basin Rural Development Institute

Promote evidence-based decisions that lead to enhanced regional well-being through research and information provision



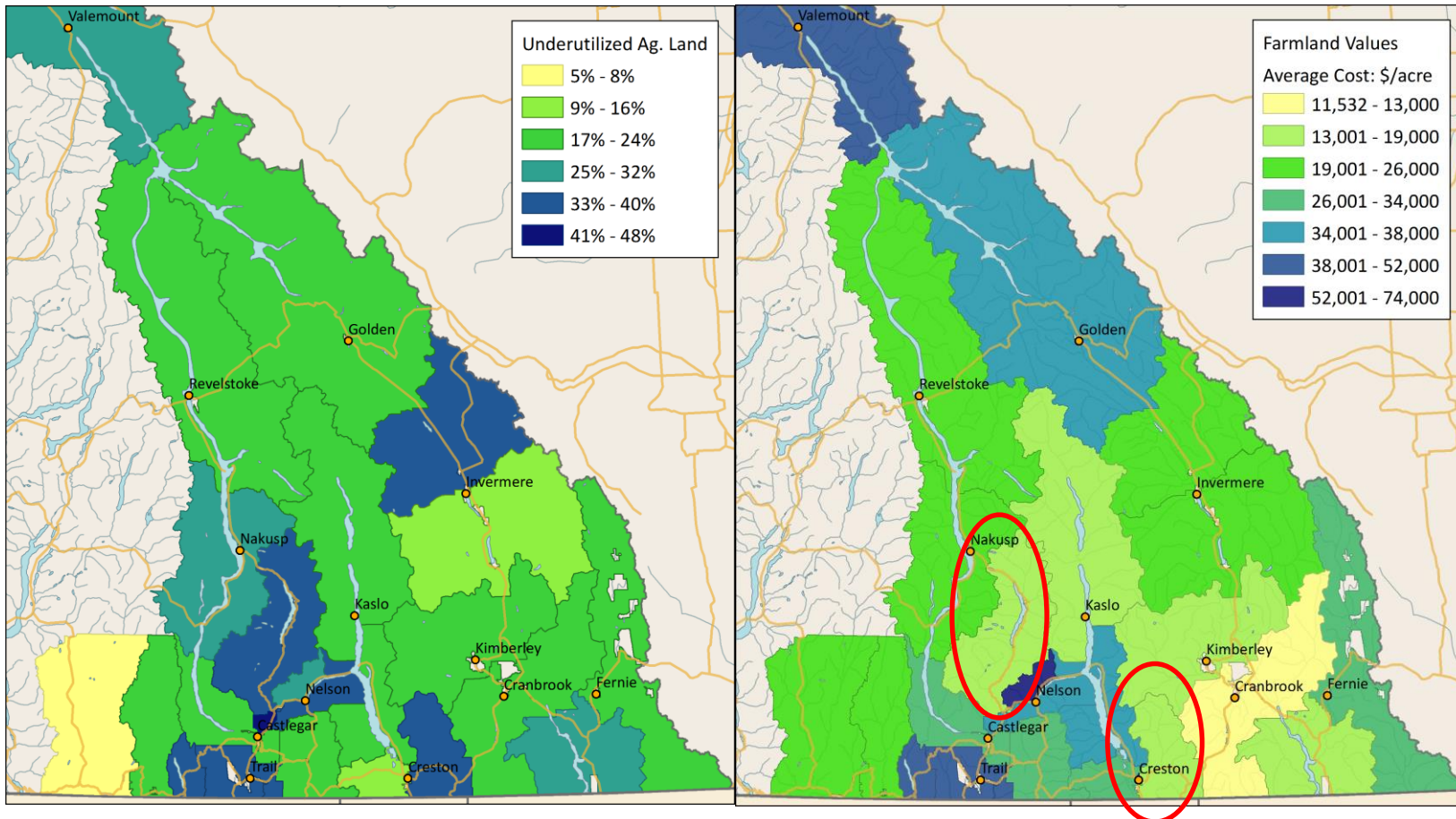
# The Regional Food Systems Project

*Identify opportunities to increase regional food production in ways that promote economic, social, environmental and cultural well-being.*



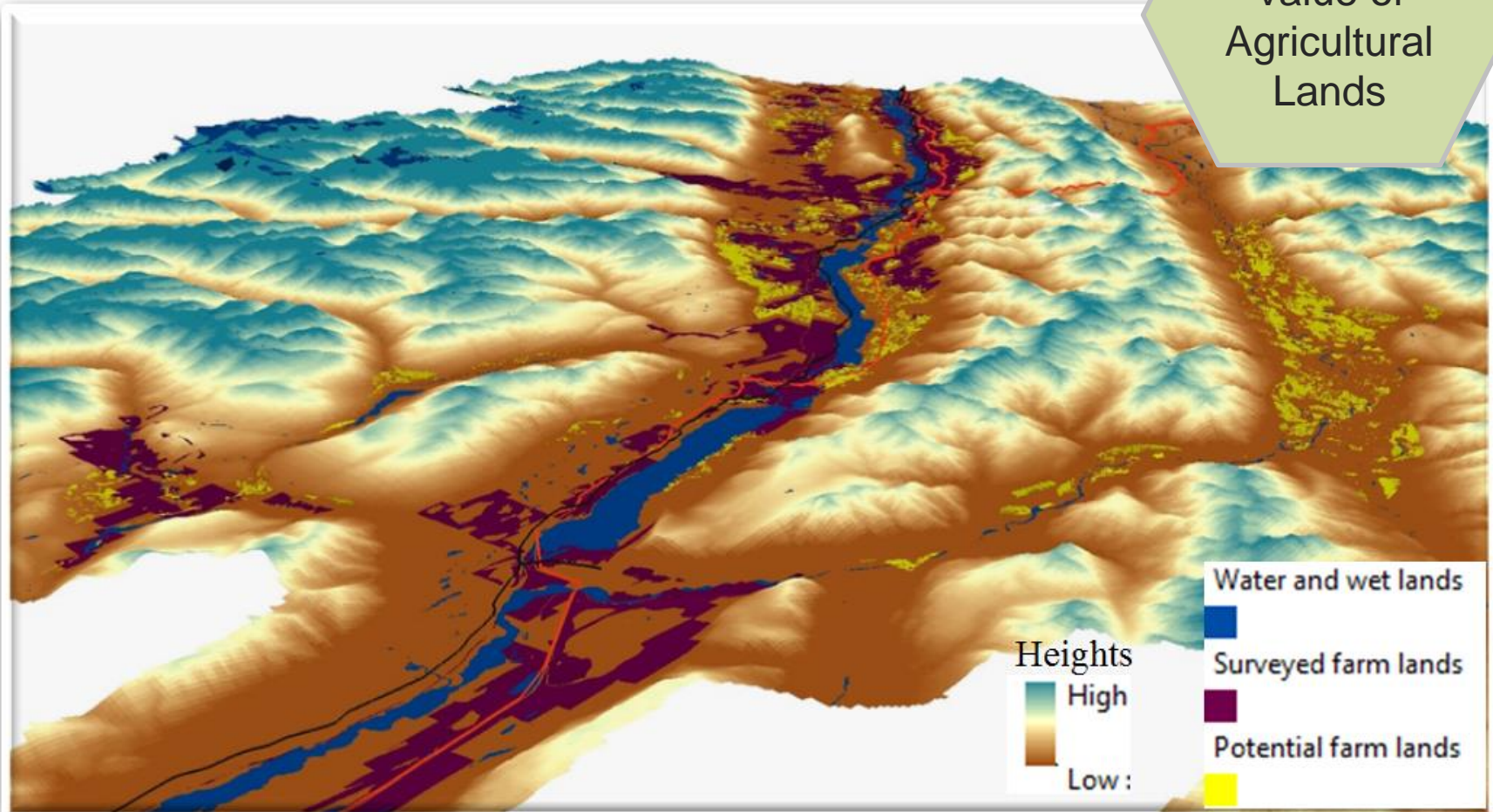
[cbrdi.ca/food](http://cbrdi.ca/food)

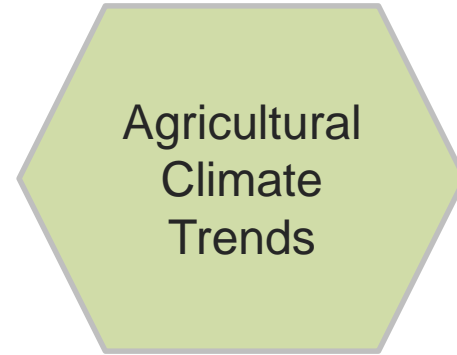
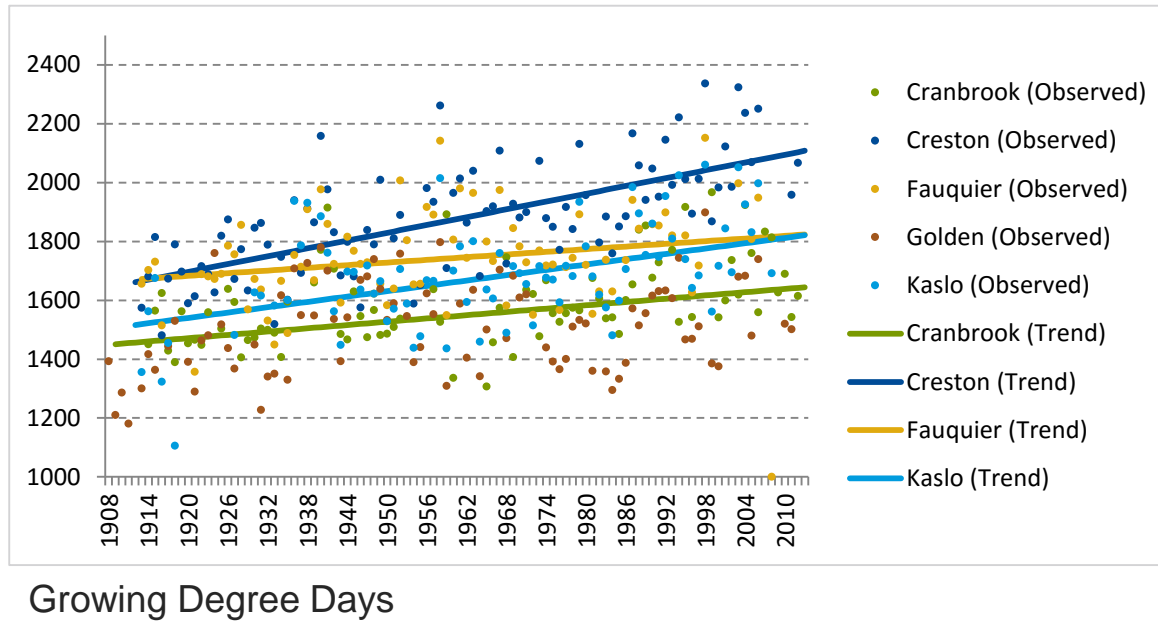
# Property Data Analysis



# Remote Sensing Analysis

Extent and  
Value of  
Agricultural  
Lands





- Longer Frost Free Period (long term only)
- More Growing Degree Days (long and medium)
- Lower climatic moisture deficit (long term only)
- Considerable moisture limitations remain

- Plans and Strategies
- Feasibility Studies
- Primary Research
- Best Practices
- Background Reports
- Event and Initiative Summaries
- Food Guides

## Inventory of Regional Resources





## Regional Agricultural Planning Themes

Increasing  
Demand vs.  
Decreasing  
Supply

Land  
Supply  
Challenges

Changing  
Demographics  
of Farmers and  
Labour

Financial  
Viability

Information Needs:

- Advisory Services
- New Farmer Training
- **Land Use**
- **Markets**
- **Land Access**
- **Climate Change**
- Irrigation
- Invasive Weeds

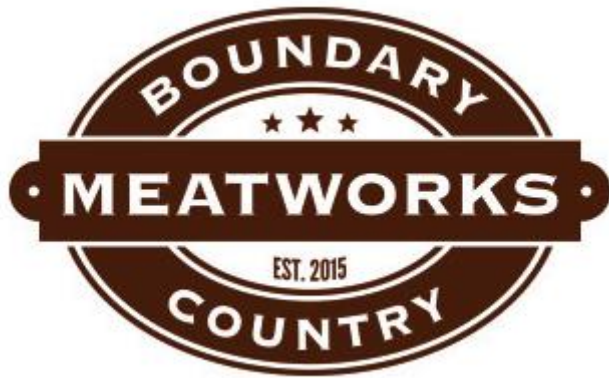
[https://www.youtube.com/watch?v=wn\\_dzl22qIY&feature=youtu.be](https://www.youtube.com/watch?v=wn_dzl22qIY&feature=youtu.be)

Innovative  
Solutions to  
Regional  
Challenges

- Innovation required to close demand-supply gap
- Preferred solutions re-purpose or re-organize existing assets
- Examples exist within and outside the region

# Processing Solutions

- Community abattoirs
- Accessible commercial kitchens



# Supply Solutions

- Shortened supply chains
  - CSAs
  - Farmers Markets
- Value-based supply chains
  - Food Hub

# MEMBER INFORMATION

CLICK TO DOWNLOAD MEMBER INFORMATION DOCUMENTS... [KBFPFC MEMBER ELIGIBILITY FINAL](#) [KBFPFC MEMBER R & R FINAL](#) [KBFPFC MEMBERSHIP APPLICATION FINAL](#) [MAY 2015 MEMO OF ASSOCIATION](#)

## KBFPFC

Our Purpose.... The purpose of the Kootenay and Boundary Food Producers' Co-operative is to increase agricultural production and consumer access to healthy local food in Southeastern British Columbia. This will be accomplished by: a. Developing services and infrastructure to streamline transactions between food producers and customers b. Building agricultural capacity and infrastructure c. Developing educational and marketing opportunities to increase farm viability in the region, and d. Such other activities as are necessary and desirable for these purposes. A volunteer group has been working for over 2 years through the background pieces of doing the research, a feasibility study, talking to potential members, running a pilot, and now business planning for the first full year...

## WHAT'S NEW

- [Interest in Locally Grown Food is Growing!](#)
- [We're Hiring - 2016 Coordinator](#)
- [Kootenay & Boundary Food Producers Co-op Thank you!](#)
- [Our Indiegogo Campaign is rolling](#)
- [We Need Your Help - Help us reach our target!](#)

## CONTRIBUTE HERE

We need your help to make our vision a reality. Please consider making a

# Land Access Solutions

- Cooperative and community farms
- Incubator farms
- Farmland access agreements
- Public farmland
- Farmland trusts



# Advancing the Basin-Boundary Regional Food System



COLUMBIA BASIN  
**RDI**  
RURAL DEVELOPMENT INSTITUTE

[www.cbrdi.ca/food](http://www.cbrdi.ca/food)