



COLUMBIA BASIN
RDI
RURAL DEVELOPMENT INSTITUTE

CONNECT • UNDERSTAND • MOBILIZE

Employment Lands Project

Employment Lands Analysis & the Site Locator Tool

September 2014

Jonathan Buttle

Columbia Basin Rural Development Institute

Selkirk College



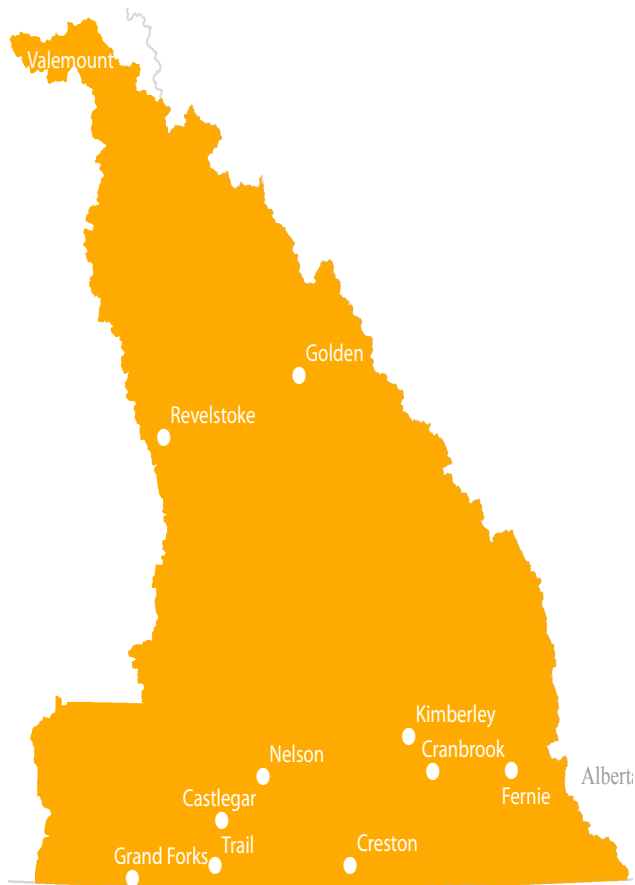
Overview

- **Employment Lands Project History**
- **Economic Assets Map**
- **Employment Lands Analysis**
 - Insufficient Lands?
 - Underutilized Lands!
 - Development Pressures?!?
- **The Site Locator Tool**
- **Considerations**





Employment Lands Project Overview



CORE PROJECT GOALS

- On-line economic assets map;
- Stakeholder engagement; and
- Assessment of ***Employment Lands***.

ADDITIONAL GOALS

- Site Locator Tool;
- Analysis of the potential for development conflict



Partnerships

Funders

Community Futures EK, SIBAC,
CBT

Government

Ministry Jobs, Tourism & Skills
Training

Institutions

Selkirk College, SGRC, RDI

Regional Districts

RDCK, RDEK, RDKB, CSRD,
RDFFG

Municipalities

28 Municipalities within Basin-
Boundary

First Nations

Ktunaxa Nation



Why Regional Perspective and Partnerships

- Over 200,000 sqkm region
 - Lot's of empty space between towns
- Desire for release of Crown Land
 - Political Capital
- Available info was anecdotal
 - We need empirical evidence for sound policy

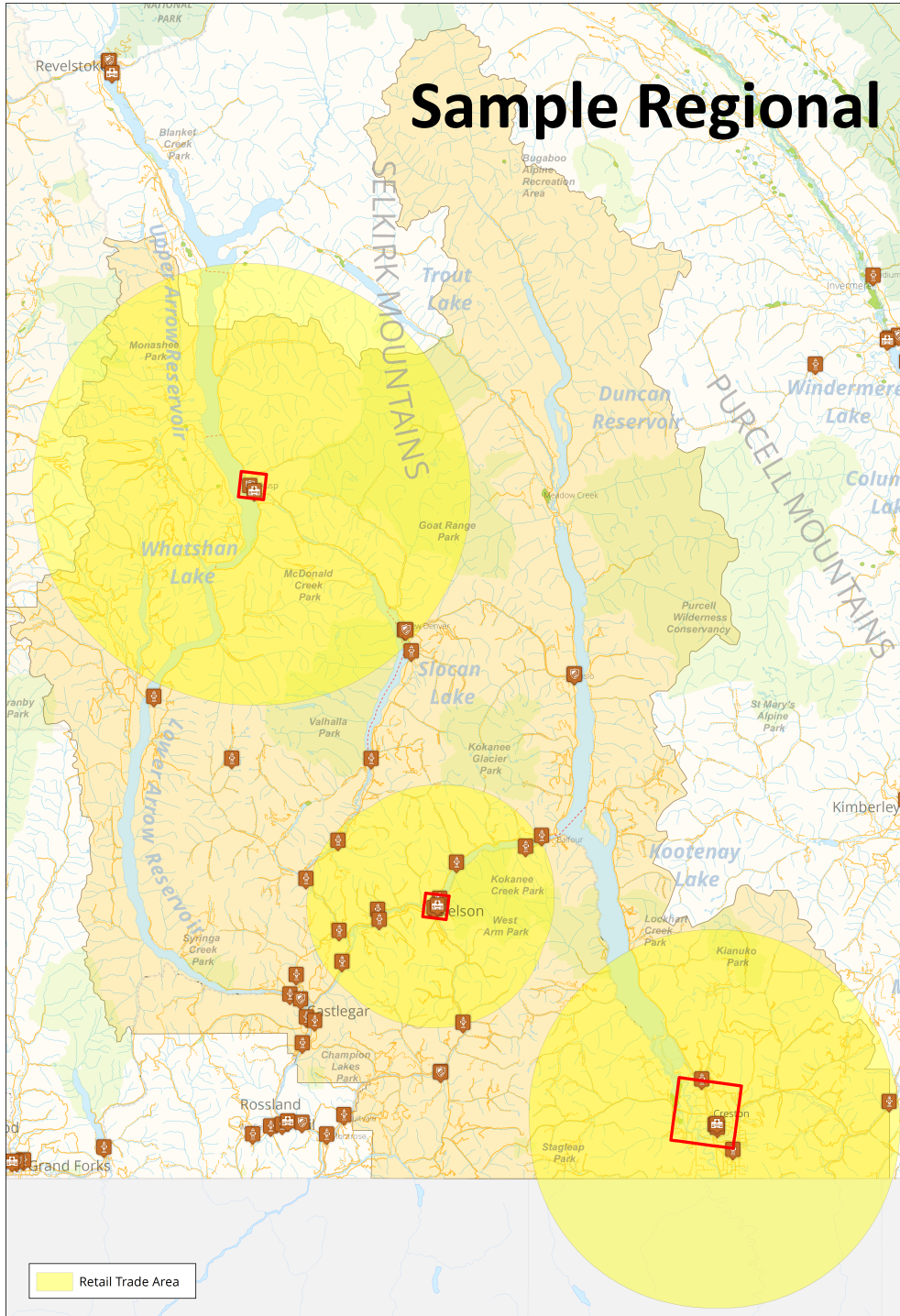


Asset Mapping

What are “Economic Assets”?

- The infrastructure (physical and administrative) that facilitates economic activity.
 - Cadastral Fabric:
 - Zoning, Parcels, Buildings, and Ownership
 - Physical Infrastructure:
 - Roads, Rail, Airports, Hospitals, Schools, Government Service Facilities, Services
 - Political Boundaries
 - Regional Districts, OCPs, Forest Tenures, Mining Tenures
- The infrastructure (natural, social & cultural) that supports our well-being.
 - Environmental:
 - ALR, Community Forests, Parklands, Community Watersheds, FSRs
 - Social:
 - Colleges, Schools, Fire Departments, Hospitals, Health Care Centres
 - Cultural
 - Galleries, Arts Councils, Farmers Markets, Radio Stations, Museums

Sample Regional Level Map

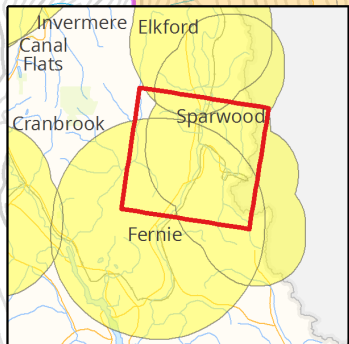
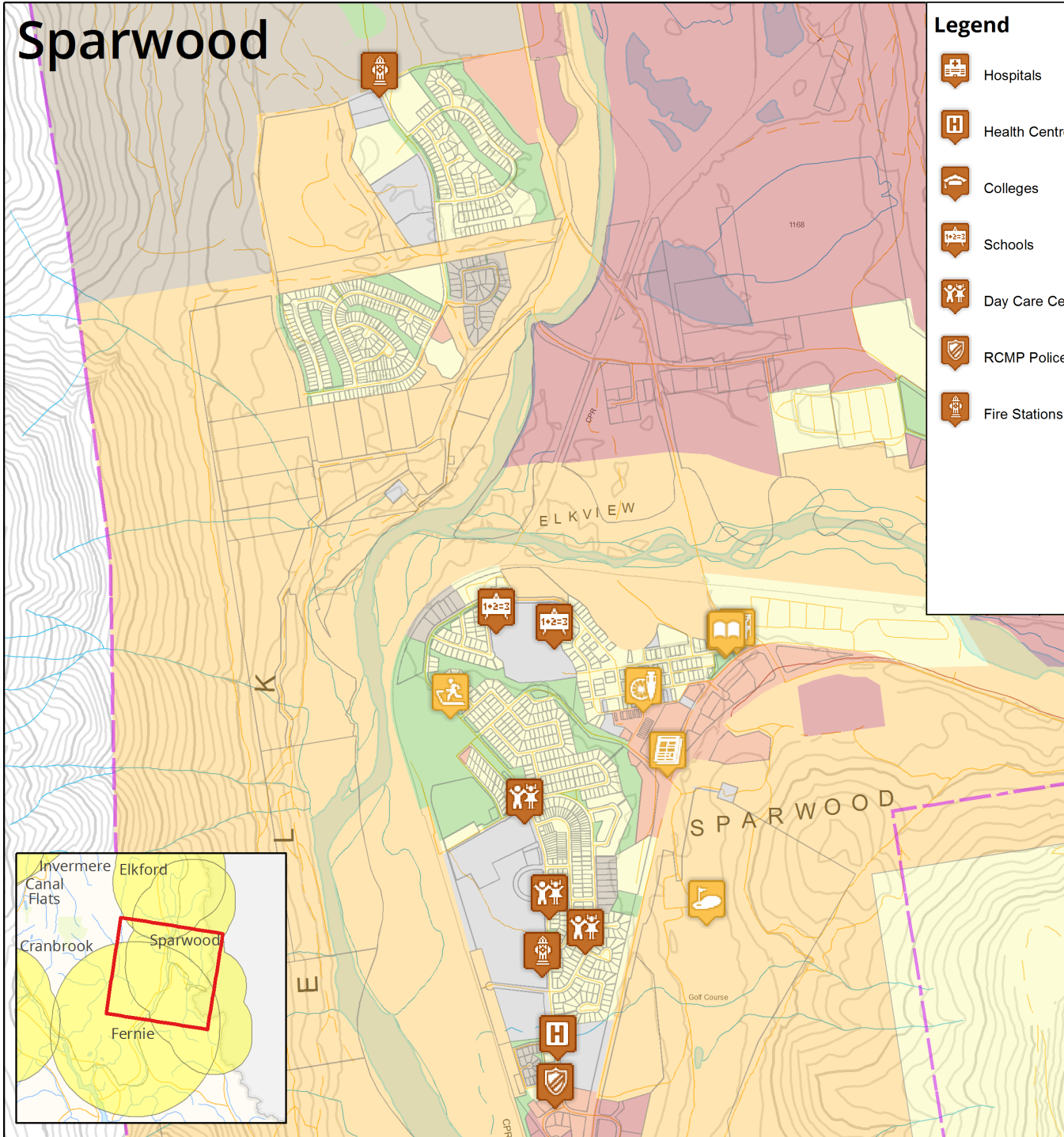


Legend


















	Hospitals		Farmers Markets	Zoning		Agricultural
	Health Centres		Museums			Commercial
	Colleges		Galleries And Centres			Industrial
	Schools		Historic Places			Mixed Use
	RCMP Police Stations		Municipal Boundaries			Parks and Recreation
	Fire Stations		Parcels			Residential
	Recreation Facilities					Rural
	Libraries					
	Golf Courses					

Retail Trade Area




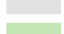
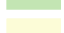


Sparwood



Legend

-  Hospitals
-  Health Centres
-  Colleges
-  Schools
-  Day Care Centres
-  RCMP Police Stations
-  Fire Stations
-  Recreation Facilities
-  Libraries
-  Newspapers
-  Community Radio
-  Golf Courses
-  Farmers Markets
-  Museums
-  Arts Councils
-  Galleries And Centres
-  Historic Places

Zoning

-  Agricultural
-  Commercial
-  Industrial
-  Mixed Use
-  Parks and Recreation
-  Residential
-  Rural



Assessment of Employment Lands

Demand

Who is short of Employment Lands?

- **Use BRE results to identify gaps**
- **Display is at community level to protect respondents**
- **Question posed:**
 - **Are you planning to expand?**
 - **What barriers do you face (No suitable premises)?**



Assessment of Employment Lands

Supply

Are there existing lands that are not being used?

- **BC Assessment Roll-Data**
- **Tied to cadastral Fabric**
- **Proxy:**
 - **Parcels listed as vacant (use codes)**
 - **Assumed to indicate underutilization**



Assessment of Employment Lands

Quality of Proxies

Admittedly weak – but, a BIG improvement

- **Demand**
 - Proxy offers us a point on curve
 - Hidden Demand
- **Supply**
 - Proxy offers us the limit of Q_s
 - Undeveloped Land
- **Together these give us some sense of the size of the shortage ($Q_d - Q_s$)**



Assessment of Employment Lands

Are there lands that are more prone to protest?

- **Anecdotal evidence suggests this problem occurs even when all appropriate steps are taken**
- **Assumption: certain zoning borders are more likely to produce conflict**

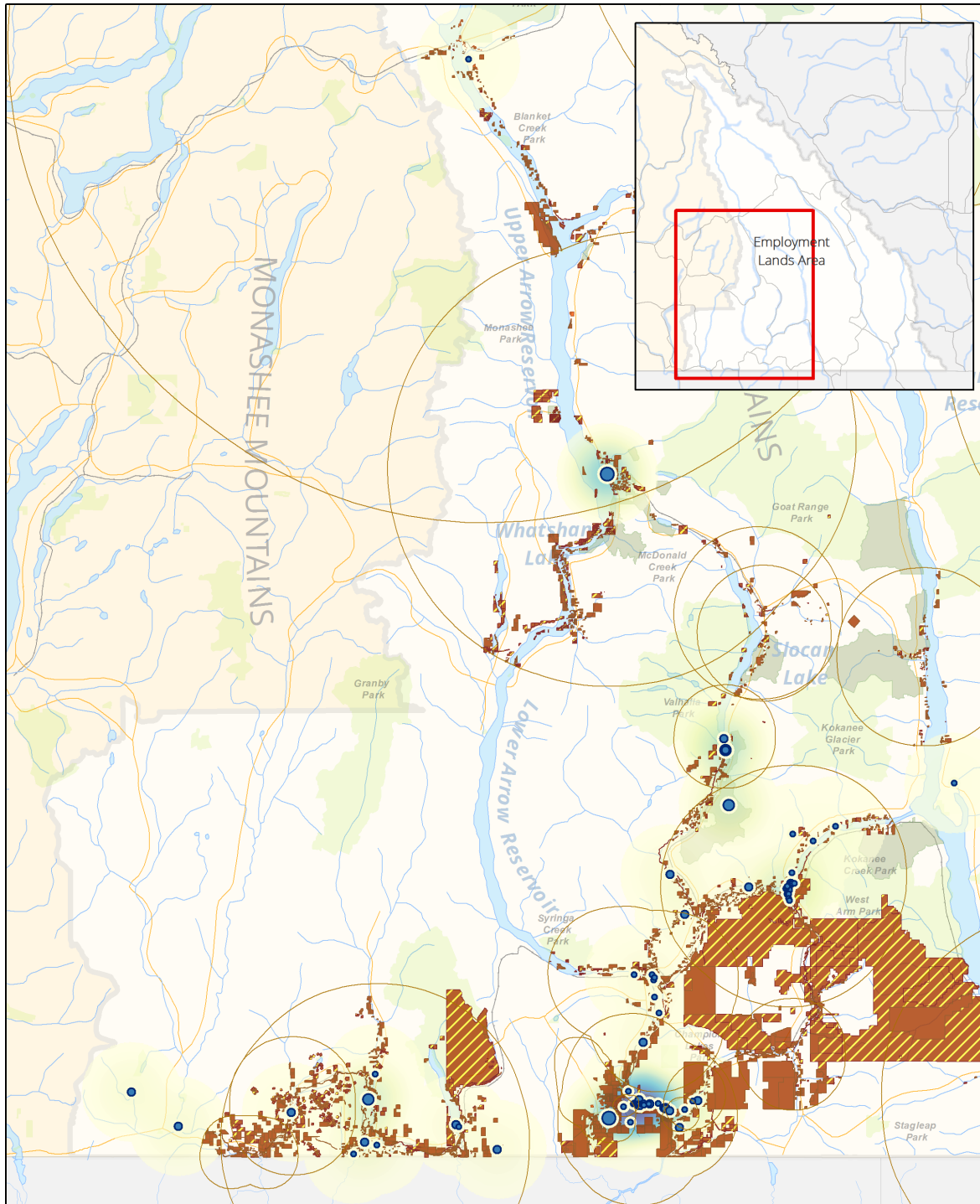
Areas of Potentially Controversial Developments

- Commercial zoned areas
- Industrial zoned areas
- Mining tenures
- Forestry tenures

Potential Conflicting Uses

- Residential zoned areas
- Parks, WMA, Rec Tenures
- Community Watershed areas
- ALR

South West Basin

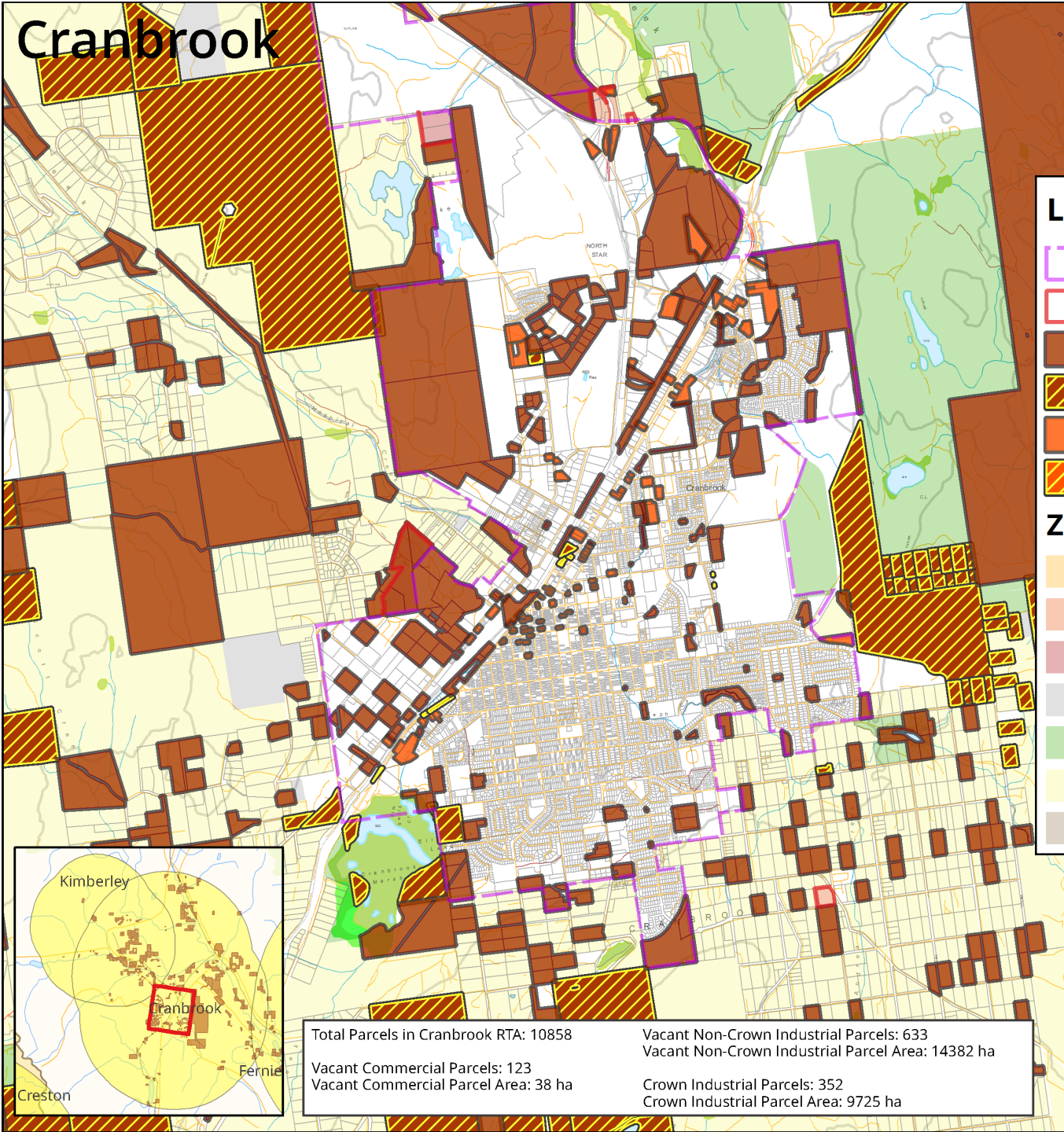


Business Expansion Concerns

- 1 - 2
- 3 - 10
- 11 - 23
- 24 - 40
- 41 - 68

- Vacant Industrial
- Vacant Industrial (Crown Owned)
- Vacant Commercial
- Vacant Commercial (Crown Owned)




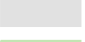
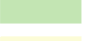


Cranbrook

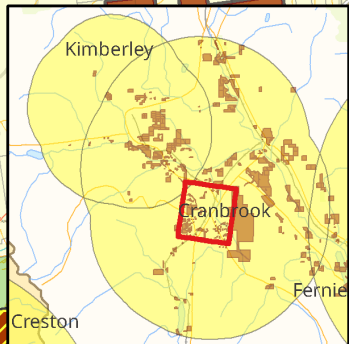


Legend

-  Municipal Boundaries
-  Pressure Areas
-  Vacant Industrial
-  Vacant Industrial (Crown Owned)
-  Vacant Commercial
-  Vacant Commercial (Crown Owned)

Zoning

-  Agricultural
-  Commercial
-  Industrial
-  Mixed Use
-  Parks and Recreation
-  Residential
-  Rural



Total Parcels in Cranbrook RTA: 10858	Vacant Non-Crown Industrial Parcels: 633
Vacant Commercial Parcels: 123	Vacant Non-Crown Industrial Parcel Area: 14382 ha
Vacant Commercial Parcel Area: 38 ha	Crown Industrial Parcels: 352
	Crown Industrial Parcel Area: 9725 ha



Results for Stakeholders

- This is NOT a suite of “answers”
- This IS a suite of questions and prompts
 - Opportunity to validate data
 - Need to validate assumptions
- This IS an opportunity to continue the conversation with your constituents
 - Regarding relevance of results
 - To reconsider existing land supply wrt trade flows, and boundaries



Site Locator Tool

Early project Question

Are there public lands that could be added to the supply of Employment Lands?

- **Addressing question led to development of extraordinary tool**
- **Re-define question: “Can we identify suitable lands?”**
- **Apply question to current supply of Employment lands**



Site Locator Tool – Search Criteria

Location

- Regional District (required)
- Community(Optional)
- Distance from community (Optional)

Zoning

- Choose one of 7 major zoning types

Developed

- Choose whether parcel has existing building

Transportation

- Select maximum distance to major Hwy

Services (proxy)

- Distance to Hwys, roads, municipal bdry

Water

- Distance to water service area, municipal bdry, or community watershed

Parcel Size

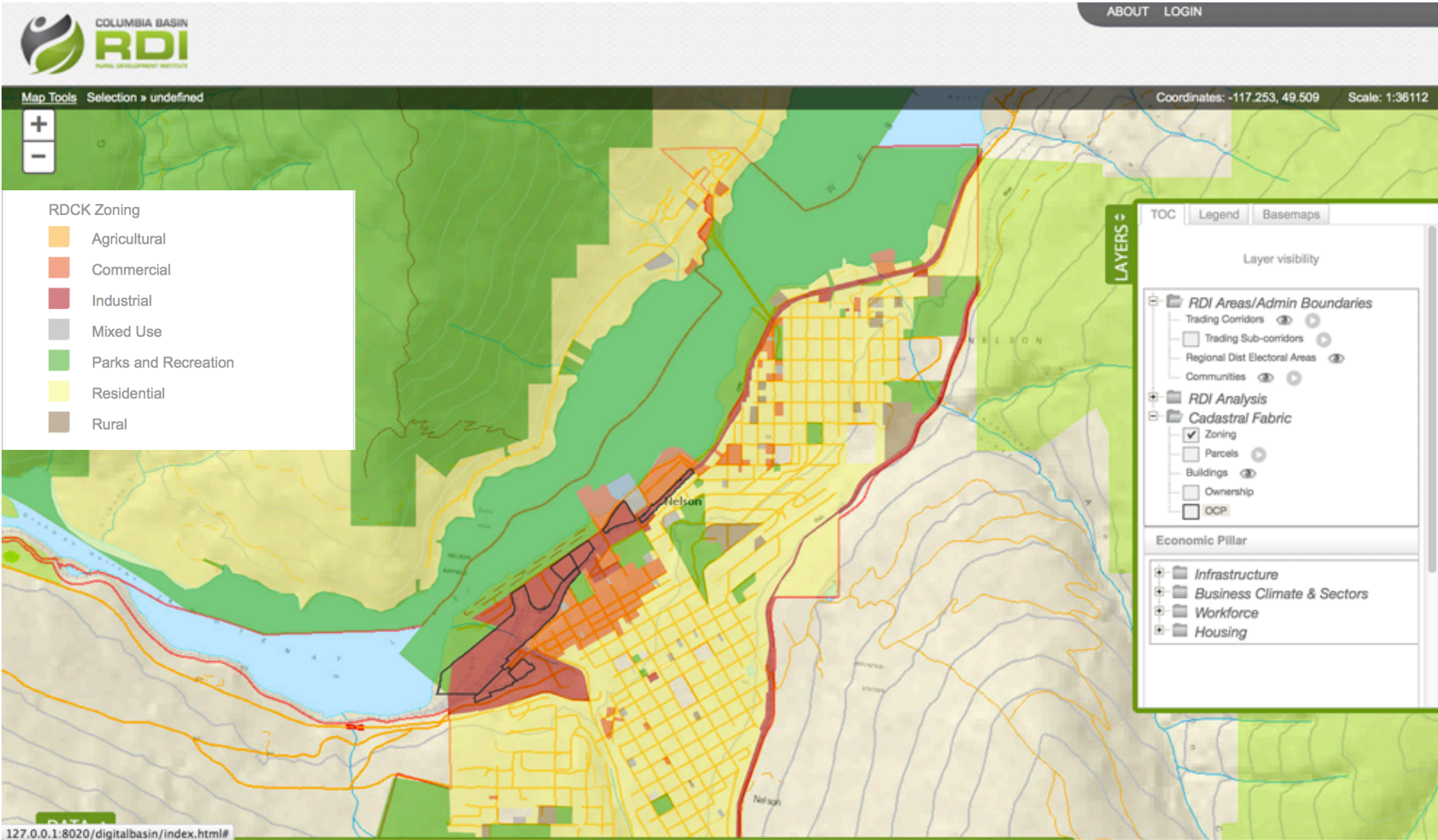
- Minimum / maximum measured in ha

Land Gradient

- Minimum % of area under specific gradient



Nelson (Zoning)



Parcels outlined in black meet the filtering criteria —



Site Locator Tool

Results accompanied by list of site IDs

Beta – Testing in Fall 2014

Availability through:

www.cbrdi.ca



New Questions / Next Steps

- Can we improve the data?
 - Development of partnership with BC Assessment
 - Considerations of integrating with MLS (KREB)
 - Promotion of BRE (all communities / time-series)
- Is there a real-estate market efficiency problem?
 - Matching of attributes is difficult
 - Information (to suppliers and consumers) is insufficient

COLUMBIA BASIN RURAL DEVELOPMENT INSTITUTE

CONNECT • UNDERSTAND • MOBILIZE



COLUMBIA BASIN
RDI
RURAL DEVELOPMENT INSTITUTE