

Elkford District Municipality

1	General
<p>Incorporated in 1971, Elkford has a total land area of 101.59 square km (2006 Census). By highway the District is 35 km north of Sparwood. Elkford is in the East Kootenay Regional District.</p>	

2					Population Estimates					Age Distribution				
Annual Estimates					2011 Census					% Distribution, 2011 *				
Year	Elkford	% Change Prev. Year	BC	% Change Prev. Year	Elkford	Male	Female	Elkford	BC					
					All ages	1,365	1,160	100.0	100.0					
2007	2,518	n/a	4,309,632	n/a	0 - 14	270	235	20.2	15.4					
2008	2,559	1.6	4,384,047	1.7	15 - 24	140	130	10.7	12.6					
2009	2,606	1.8	4,459,947	1.7	25 - 44	375	320	27.6	26.3					
2010	2,705	3.8	4,529,647	1.6	45 - 64	485	400	35.1	30.0					
2011	2,730	0.9	4,573,321	1.0	65 +	95	75	6.5	15.7					

Source: Statistics Canada (as of July 1, includes estimate of Census undercount)

* based on published totals, both sexes

2006 Census Profiles can be found on our Website at <http://www.bcstats.gov.bc.ca/census.asp>

3							Selected Census Characteristics						
							Elkford			British Columbia			
Characteristics							2001	2006	% Change	% Change	2001	2006	
Population							2,589	2,463	- 4.9	5.3	3,907,738	4,113,487	
Population (by citizenship)							2,580	2,465	- 4.5	5.3	3,868,875	4,074,385	
Non-immigrant							2,245	2,205	- 1.8	2.9	2,821,870	2,904,240	
Immigrant							335	260	- 22.4	10.8	1,009,820	1,119,215	
Labour force (15+ yrs.)							1,370	1,390	1.5	8.1	2,059,950	2,226,380	
Employees							1,260	1,270	0.8	9.2	1,715,600	1,873,050	
Self-employed							90	105	16.7	7.4	291,455	313,000	
Participation rate [ppt.=percentage points]							68.1%	69.5%	1.4 ppt.	0.4 ppt.	65.2%	65.6%	
Unemployment rate							6.5%	4.3%	-2.2 ppt.	-2.5 ppt.	8.5%	6.0%	
Total population 25 to 64 years							1,525	1,565	2.6	6.5	2,144,050	2,284,465	
No certificate, diploma or degree							360	235	- 34.7	- 40.1	471,470	282,200	
High school certificate or equivalent							340	545	60.3	27.7	462,925	591,275	
Apprenticeship/trades certificate or diploma							415	305	- 26.5	- 7.4	295,180	273,450	
College, CEGEP or other cert. or diploma							235	305	29.8	11.3	401,760	447,005	
University certificate, diploma or degree							180	175	- 2.8	34.7	512,715	690,535	
Bachelor's degree							115	85	- 26.1	23.0	282,800	347,715	
Census families							755	755	-	6.9	1,086,030	1,161,420	
Lone-parent families							65	65	-	4.0	168,420	175,165	
Households							975	1,005	3.1	7.1	1,534,335	1,643,150	
1-family households							755	730	- 3.3	6.1	1,012,925	1,074,850	
Multi-family households							-	10	-	18.4	35,050	41,510	
Non-family households							220	260	18.2	8.3	486,355	526,785	
Median Income (2000 & 2005)							\$ 39,986	\$ 36,053	- 9.8	12.5	\$ 22,095	\$ 24,867	
Males							\$ 56,976	\$ 63,060	10.7	9.0	\$ 28,976	\$ 31,598	
Females							\$ 9,875	\$ 13,426	36.0	14.0	\$ 17,546	\$ 19,997	
Median Family Income (2000 & 2005)							\$ 67,614	\$ 79,676	17.8	20.0	\$ 54,840	\$ 65,787	
Economic Families							755	745	- 1.3	6.5	1,044,850	1,112,810	
2001 Incidence, low income 2006 Prevalence, low income							5.4%	4.7%	-0.7 ppt.	-0.6 ppt.	13.9%	13.3%	
Unattached persons, 15+							240	285	18.8	4.7	576,825	603,880	
Incidence, low income							10.3%	10.5%	0.2 ppt.	-1.4 ppt.	38.1%	36.7%	
Population in private hh.							2,585	2,455	- 5.0	5.1	3,785,270	3,978,215	
Incidence, low income							5.1%	5.3%	0.2 ppt.	-0.5 ppt.	17.8%	17.3%	
Dwellings							975	1,000	2.6	7.1	1,534,335	1,643,150	
Owned							810	865	6.8	12.5	1,017,485	1,145,045	
Rented							165	135	- 18.2	- 3.6	512,360	493,995	
Average gross rent							\$ 617	\$ 573	- 7.1	10.4	\$ 750	\$ 828	
Average owners' payments							\$ 570	\$ 743	30.4	17.1	\$ 904	\$ 1,059	
Avg. value, owned dwell.							\$ 86,951	\$ 142,362	63.7	81.5	\$ 230,645	\$ 418,703	

Source: Statistics Canada. Notes: incomes are for 2005 and 2000; rent/owner's payments are restricted to non-farm, non-reserve private dwellings.

Elkford District Municipality

4		Labour Force by Industry (NAICS)					
		Elkford			BC	% Distribution, 2006	
Industry		2001	2006	% Change	% change	Elkford	BC
Total labour force		1,370	1,390	1.5	8.1	100.0	100.0
Industry - Not applicable		20	-	- 100.0	- 26.6	-	1.5
All industries (Experienced LF)		1,350	1,385	2.6	8.9	99.6	98.5
111-112 Farms		-	-	-	5.2	-	1.8
113 Forestry and logging		10	-	- 100.0	- 10.0	-	1.0
114 Fishing, hunting and trapping		-	-	-	1.3	-	0.2
1151/2 Support activities for farms		-	-	-	11.3	-	0.1
1153 Support activities for forestry		-	-	-	- 21.5	-	0.3
21 Mining and oil and gas extraction		755	705	- 6.6	42.6	50.7	0.9
22 Utilities		-	-	-	- 3.4	-	0.5
23 Construction		20	35	75.0	39.9	2.5	7.5
31-33 Manufacturing		55	45	- 18.2	- 2.7	3.2	8.5
311 Food manufacturing		20	-	- 100.0	3.6	-	1.0
321 Wood product manufacturing		20	10	- 50.0	- 16.1	0.7	1.7
322 Paper manufacturing		-	-	-	- 13.5	-	0.6
41 Wholesale trade		15	45	200.0	11.6	3.2	4.1
44-45 Retail trade		65	115	76.9	6.9	8.3	11.2
441 Motor vehicle and parts dealers		25	10	- 60.0	9.0	0.7	1.1
445 Food and beverage stores		20	65	225.0	8.4	4.7	2.9
448 Clothing & clothing accessories		-	10	-	9.2	0.7	1.1
452 General merchandise stores		-	-	-	6.5	-	1.2
48-49 Transportation & warehousing		20	30	50.0	0.6	2.2	5.2
51 Information and cultural industries		10	10	-	- 5.3	0.7	2.6
52 Finance and insurance		10	10	-	4.5	0.7	3.8
53 Real estate & rental/leasing		10	-	- 100.0	22.1	-	2.3
54 Prof'sonal, scientific & tech. serv.		35	20	- 42.9	18.6	1.4	7.3
55 Mgmt. of companies/ent'prises		-	-	-	126.6	-	0.1
56 Admin+support, waste mgmnt srv.		50	65	30.0	20.4	4.7	4.4
61 Educational services		50	60	20.0	9.2	4.3	6.9
62 Health care and social assistance		50	35	- 30.0	6.5	2.5	9.6
71 Arts, entertainment and recreation		10	10	-	11.3	0.7	2.3
72 Accommodation and food services		90	95	5.6	7.7	6.8	8.1
721 Accommodation services		20	40	100.0	2.5	2.9	1.7
722 Food services & drinking places		75	50	- 33.3	9.2	3.6	6.4
81 Other services (excl. public admin.)		60	40	- 33.3	11.8	2.9	4.9
91 Public administration		30	45	50.0	- 2.0	3.2	5.0
Special Aggregations	Agriculture, Food and Beverage	15	10	- 33.3	5.8	0.7	2.9
	Fishing and Fish Processing	10	-	- 100.0	- 3.3	-	0.5
	Logging and Forest Products	25	-	- 100.0	- 14.7	-	3.7
	Mining and Mineral Products	755	720	- 4.6	17.1	51.8	2.1

Source: Statistics Canada. Industry according to NAICS version used in each census. Unpublished data.

5		Business Locations- Number of Firms by Employment Size Range								
		Firms with no employees		Firms with employees		% change	E kootenay RD			
		E kootenay RD	BC	E kootenay RD	BC	E kootenay RD	1 to 19	20 to 49	50-199	200 Plus
2008		1,974	185,879	2,397	175,003	-	2,109	182	85	21
2009		2,048	186,541	2,459	176,124	2.6	2,169	198	73	19
2010		2,250	194,349	2,708	175,913	10.1	2,407	208	75	18
2011		2,231	195,290	2,662	173,589	- 1.7	2,376	195	75	16

Source: Business Register, Statistics Canada. In some areas, boundary changes/geocoding changes may cause large changes.

6		Municipal Residential Taxes and Charges on a Representative House					
		Elkford					
		House Value		Taxes & Charges			
Year	\$	% change	\$	% change			
2008	170,963		1,731				
2009	171,862	0.5	1,767	2.1			
2010	211,632	23.1	1,992	12.7			
2011	238,394	12.6	2,111	5.9			
2012	225,965	-5.2	2,116	0.3			

Source: Ministry of Community, Sport & Cultural Development http://www.cd.gov.bc.ca/lgd/infra/statistics_index.htm (No RD level figures)

Elkford District Municipality

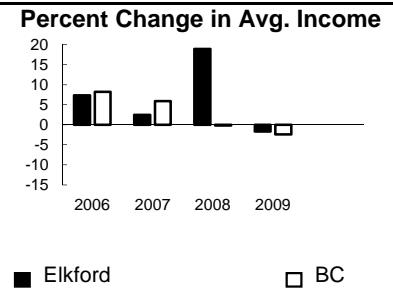
7	Values of Building Permits									
	Residential				Non-Residential			Total		Year
	Number of Units		Value \$'000		Value \$'000			Value \$'000		
Elkford	BC	Elkford	BC	Elkford	BC	Elkford	BC			
2007	13	40,932	2,171	8,611,723	168	3,932,968	2,339	12,544,691	2007	
2008	103	30,110	9,259	6,899,289	572	3,677,866	9,831	10,577,155	2008	
2009	10	18,607	1,674	4,491,075	144	3,138,810	1,818	7,629,885	2009	
2010	7	28,984	1,846	6,705,888	1,361	3,017,921	3,207	9,723,809	2010	
2011	19	25,745	4,423	6,113,406	10,458	3,136,361	14,881	9,249,767	2011	

Source: Statistics Canada

Note: Detailed non-residential permits data can be found on our Website: www.bcstats.gov.bc.ca

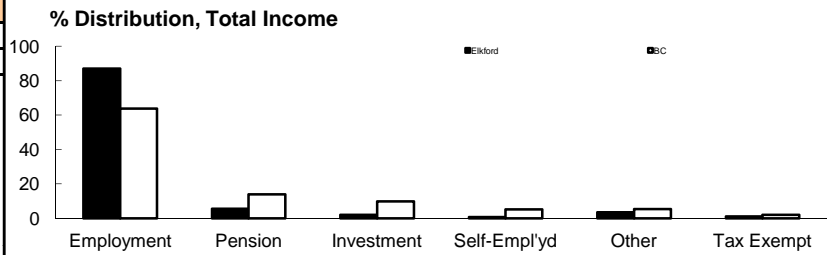
A dash can indicate a nil report, a value of less than \$500, or non-reporting. P indicates 'preliminary'.

8	Personal Taxation Statistics						Percent Change in Avg. Income
	Total Income of All Returns						
	All Returns (number)		Average Income (\$)		% Change avg. income		
Year	Elkford	BC	Elkford	BC	Elkford	BC	
2005	1,740	3,154,090	43,447	35,601	n/a	n/a	
2006	1,710	3,165,750	46,627	38,523	7.3	8.2	
2007	1,790	3,287,750	47,758	40,802	2.4	5.9	
2008	1,810	3,383,640	56,794	40,736	18.9	-0.2	
2009	1,840	3,406,860	55,851	39,754	-1.7	-2.4	



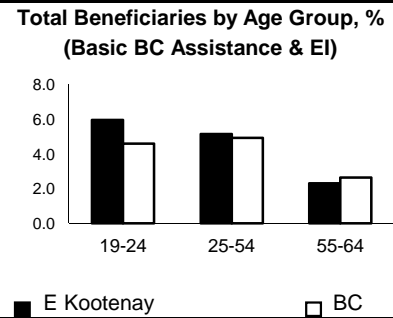
Taxation data available at: <http://www.bcstats.gov.bc.ca/data/dd/income.asp>

9	Source of Total Income 2009				% Distribution, Total Income					
	Elkford		BC							
	\$Thousands	% of Total	% of Total							
Employment	89,402	87.0	63.7							
Pension	5,753	5.6	13.8							
Investment	2,173	2.1	9.8							
Self-Employed	765	0.7	5.3							
Other	3,576	3.5	5.3							
Tax Exempt	1,098	1.1	2.0							
Total	102,766	100.0	100.0							



Source: Canada Revenue Agency. Areas are defined by postal codes and may not match municipal boundaries.

9	Dependency on the Safety Net						Total Beneficiaries by Age Group, % (Basic BC Assistance & EI)
	Percentage of Population by Age Receiving Benefits - September 2009						
	Age Group	BC Basic* Income Assistance Recipients (%)		Employment Insurance Beneficiaries (%)		Total of BC Basic Income Assistance & EI Beneficiaries (%)	
E Kootenay		BC	E Kootenay	BC	E Kootenay	BC	
Under 19	2.6	2.7					
19-24	2.3	2.1	3.9	2.6	6.0	4.6	
25-54	1.7	1.9	3.6	3.1	5.1	4.9	
55-64	0.4	0.7	1.9	2.0	2.3	2.6	
19-64	1.4	1.7	3.2	2.8	4.6	4.4	



* On temporary assistance only. Excluded are those on Continuous Assistance, aboriginals living on reserve, seniors/OAS, & children living with relatives.

Source: BC Stats (using administrative files from the BC Ministry of Housing & Social Development, and Human Resources & Social Development Canada)

Note: EI Beneficiaries reports now include regular, fishing and employment benefits, work sharing and support measures. The reports exclude sickness, maternity and parental benefits.

10	Business Formations and Failures								
	Incorporations			Bankruptcies					
	Number		Year	Cranbrook		Kootenay DR		BC	
Elkford	BC	Business		Consumer	Business	Consumer	Business	Consumer	
2007	3	34,036	2005	2	62	n.a.	n.a.	786	8,168
2008	6	30,085	2006	8	46	31	224	585	7,020
2009	2	26,431	2007	1	33	14	197	470	6,651
2010	-	30,305	2008	3	36	16	180	454	7,293
2011	1	30,844	2009	1	69	9	339	380	10,639

Source: BC Ministry of Finance

Source: Office of the Superintendent of Bankruptcy, Government of Canada

Incorporations are counted in municipality of the registered office address which may differ from the actual business location.

Note: Bankruptcy is by urban postal code forward sortation area and is counted where it is filed.