

Fernie City

| 1 | General |
|---|---------|
| <p>Incorporated in 1904, Fernie has a total land area of 16.05 square km (2006 Census). By highway the City is located 949 km east of Vancouver, 97 km east of Cranbrook and 217 km west of Lethbridge, ALTA. Fernie is in the East Kootenay Regional District.</p> | |

| 2 | Population Estimates | | | | Age Distribution | | | | |
|------------------|----------------------|------------------------|-----------|------------------------|------------------|-------|--------|------------------------|-------|
| Annual Estimates | | | | | 2011 Census | | | % Distribution, 2011 * | |
| Year | Fernie | % Change Prev. Year | BC | % Change Prev. Year | Fernie | Male | Female | Fernie | BC |
| | | | | | All ages | 2,210 | 2,235 | 100.0 | 100.0 |
| 2007 | 4,293 | n/a | 4,309,632 | n/a | 0 - 14 | 305 | 340 | 14.4 | 15.4 |
| 2008 | 4,367 | 1.7 | 4,384,047 | 1.7 | 15 - 24 | 260 | 230 | 11.1 | 12.6 |
| 2009 | 4,420 | 1.2 | 4,459,947 | 1.7 | 25 - 44 | 720 | 685 | 31.6 | 26.3 |
| 2010 | 4,409 | -0.2 | 4,529,647 | 1.6 | 45 - 64 | 680 | 665 | 30.2 | 30.0 |
| 2011 | 4,458 | 1.1 | 4,573,321 | 1.0 | 65 + | 240 | 320 | 12.5 | 15.7 |

Source: Statistics Canada (as of July 1, includes estimate of Census undercount)

* based on published totals, both sexes

2006 Census Profiles can be found on our Website at <http://www.bcstats.gov.bc.ca/census.asp>

| 3 | Selected Census Characteristics | | | | | |
|---|---------------------------------|------------|-----------|------------------|------------|------------|
| Characteristics | Fernie | | | British Columbia | | |
| | 2001 | 2006 | % Change | % Change | 2001 | 2006 |
| Population | 4,611 | 4,217 | - 8.5 | 5.3 | 3,907,738 | 4,113,487 |
| Population (by citizenship) | 4,550 | 4,145 | - 8.9 | 5.3 | 3,868,875 | 4,074,385 |
| Non-immigrant | 4,030 | 3,730 | - 7.4 | 2.9 | 2,821,870 | 2,904,240 |
| Immigrant | 495 | 415 | - 16.2 | 10.8 | 1,009,820 | 1,119,215 |
| Labour force (15+ yrs.) | 2,670 | 2,565 | - 3.9 | 8.1 | 2,059,950 | 2,226,380 |
| Employees | 2,215 | 2,225 | 0.5 | 9.2 | 1,715,600 | 1,873,050 |
| Self-employed | 375 | 330 | - 12.0 | 7.4 | 291,455 | 313,000 |
| Participation rate [ppt.=percentage points] | 70.4% | 72.6% | 2.2 ppt. | 0.4 ppt. | 65.2% | 65.6% |
| Unemployment rate | 9.8% | 5.7% | -4.1 ppt. | -2.5 ppt. | 8.5% | 6.0% |
| Total population 25 to 64 years | 2,590 | 2,430 | - 6.2 | 6.5 | 2,144,050 | 2,284,465 |
| No certificate, diploma or degree | 635 | 265 | - 58.3 | - 40.1 | 471,470 | 282,200 |
| High school certificate or equivalent | 565 | 740 | 31.0 | 27.7 | 462,925 | 591,275 |
| Apprenticeship/trades certificate or diploma | 410 | 405 | - 1.2 | - 7.4 | 295,180 | 273,450 |
| College, CEGEP or other cert. or diploma | 575 | 545 | - 5.2 | 11.3 | 401,760 | 447,005 |
| University certificate, diploma or degree | 410 | 475 | 15.9 | 34.7 | 512,715 | 690,535 |
| Bachelor's degree | 265 | 245 | - 7.5 | 23.0 | 282,800 | 347,715 |
| Census families | 1,280 | 1,180 | - 7.8 | 6.9 | 1,086,030 | 1,161,420 |
| Lone-parent families | 155 | 140 | - 9.7 | 4.0 | 168,420 | 175,165 |
| Households | 1,940 | 1,875 | - 3.4 | 7.1 | 1,534,335 | 1,643,150 |
| 1-family households | 1,270 | 1,175 | - 7.5 | 6.1 | 1,012,925 | 1,074,850 |
| Multi-family households | 10 | - | - 100.0 | 18.4 | 35,050 | 41,510 |
| Non-family households | 665 | 695 | 4.5 | 8.3 | 486,355 | 526,785 |
| Median Income (2000 & 2005) | \$ 20,277 | \$ 25,560 | 26.1 | 12.5 | \$ 22,095 | \$ 24,867 |
| Males | \$ 30,272 | \$ 38,859 | 28.4 | 9.0 | \$ 28,976 | \$ 31,598 |
| Females | \$ 15,701 | \$ 16,148 | 2.8 | 14.0 | \$ 17,546 | \$ 19,997 |
| Median Family Income (2000 & 2005) | \$ 59,422 | \$ 73,511 | 23.7 | 20.0 | \$ 54,840 | \$ 65,787 |
| Economic Families | 1,295 | 1,195 | - 7.7 | 6.5 | 1,044,850 | 1,112,810 |
| 2001 Incidence, low income 2006 Prevalence, low income | 9.6% | 8.8% | -0.8 ppt. | -0.6 ppt. | 13.9% | 13.3% |
| Unattached persons, 15+ | 835 | 810 | - 3.0 | 4.7 | 576,825 | 603,880 |
| Incidence, low income | 34.6% | 34.6% | 0.0 ppt. | -1.4 ppt. | 38.1% | 36.7% |
| Population in private hh. | 4,550 | 4,130 | - 9.2 | 5.1 | 3,785,270 | 3,978,215 |
| Incidence, low income | 13.0% | 13.9% | 0.9 ppt. | -0.5 ppt. | 17.8% | 17.3% |
| Dwellings | 1,945 | 1,875 | - 3.6 | 7.1 | 1,534,335 | 1,643,150 |
| Owned | 1,375 | 1,410 | 2.5 | 12.5 | 1,017,485 | 1,145,045 |
| Rented | 565 | 465 | - 17.7 | - 3.6 | 512,360 | 493,995 |
| Average gross rent | \$ 607 | \$ 643 | 5.9 | 10.4 | \$ 750 | \$ 828 |
| Average owners' payments | \$ 784 | \$ 923 | 17.7 | 17.1 | \$ 904 | \$ 1,059 |
| Avg. value, owned dwell. | \$ 167,788 | \$ 317,912 | 89.5 | 81.5 | \$ 230,645 | \$ 418,703 |

Source: Statistics Canada. Notes: incomes are for 2005 and 2000; rent/owner's payments are restricted to non-farm, non-reserve private dwellings.

Fernie City

| 4 | | Labour Force by Industry (NAICS) | | | | | |
|---|--------------|----------------------------------|--------------|------------|-------------|----------------------|--|
| | | Fernie | | | BC | % Distribution, 2006 | |
| Industry | 2001 | 2006 | % Change | % change | Fernie | BC | |
| Total labour force | 2,665 | 2,565 | - 3.8 | 8.1 | 100.0 | 100.0 | |
| Industry - Not applicable | 80 | - | - 100.0 | - 26.6 | - | 1.5 | |
| All industries (Experienced LF) | 2,590 | 2,560 | - 1.2 | 8.9 | 99.8 | 98.5 | |
| 111-112 Farms | - | 20 | - | 5.2 | 0.8 | 1.8 | |
| 113 Forestry and logging | 15 | - | - 100.0 | - 10.0 | - | 1.0 | |
| 114 Fishing, hunting and trapping | - | - | - | 1.3 | - | 0.2 | |
| 1151/2 Support activities for farms | - | - | - | 11.3 | - | 0.1 | |
| 1153 Support activities for forestry | - | 25 | - | - 21.5 | 1.0 | 0.3 | |
| 21 Mining and oil and gas extraction | 360 | 365 | 1.4 | 42.6 | 14.2 | 0.9 | |
| 22 Utilities | 20 | - | - 100.0 | - 3.4 | - | 0.5 | |
| 23 Construction | 175 | 225 | 28.6 | 39.9 | 8.8 | 7.5 | |
| 31-33 Manufacturing | 125 | 70 | - 44.0 | - 2.7 | 2.7 | 8.5 | |
| 311 Food manufacturing | 10 | 15 | 50.0 | 3.6 | 0.6 | 1.0 | |
| 321 Wood product manufacturing | 85 | 15 | - 82.4 | - 16.1 | 0.6 | 1.7 | |
| 322 Paper manufacturing | - | - | - | - 13.5 | - | 0.6 | |
| 41 Wholesale trade | 50 | 100 | 100.0 | 11.6 | 3.9 | 4.1 | |
| 44-45 Retail trade | 285 | 290 | 1.8 | 6.9 | 11.3 | 11.2 | |
| 441 Motor vehicle and parts dealers | 35 | 20 | - 42.9 | 9.0 | 0.8 | 1.1 | |
| 445 Food and beverage stores | 110 | 100 | - 9.1 | 8.4 | 3.9 | 2.9 | |
| 448 Clothing & clothing accessories | 10 | 15 | 50.0 | 9.2 | 0.6 | 1.1 | |
| 452 General merchandise stores | 10 | 10 | - | 6.5 | 0.4 | 1.2 | |
| 48-49 Transportation & warehousing | 65 | 30 | - 53.8 | 0.6 | 1.2 | 5.2 | |
| 51 Information and cultural industries | 30 | 45 | 50.0 | - 5.3 | 1.8 | 2.6 | |
| 52 Finance and insurance | 65 | 55 | - 15.4 | 4.5 | 2.1 | 3.8 | |
| 53 Real estate & rental/leasing | 30 | 95 | 216.7 | 22.1 | 3.7 | 2.3 | |
| 54 Prof'sonal, scientific & tech. serv. | 100 | 130 | 30.0 | 18.6 | 5.1 | 7.3 | |
| 55 Mgmt. of companies/ent'prises | - | - | - | 126.6 | - | 0.1 | |
| 56 Admin+support, waste mgmnt srv. | 30 | 55 | 83.3 | 20.4 | 2.1 | 4.4 | |
| 61 Educational services | 160 | 175 | 9.4 | 9.2 | 6.8 | 6.9 | |
| 62 Health care and social assistance | 280 | 160 | - 42.9 | 6.5 | 6.2 | 9.6 | |
| 71 Arts, entertainment and recreation | 155 | 95 | - 38.7 | 11.3 | 3.7 | 2.3 | |
| 72 Accommodation and food services | 490 | 420 | - 14.3 | 7.7 | 16.4 | 8.1 | |
| 721 Accommodation services | 280 | 215 | - 23.2 | 2.5 | 8.4 | 1.7 | |
| 722 Food services & drinking places | 215 | 205 | - 4.7 | 9.2 | 8.0 | 6.4 | |
| 81 Other services (excl. public admin.) | 60 | 90 | 50.0 | 11.8 | 3.5 | 4.9 | |
| 91 Public administration | 75 | 105 | 40.0 | - 2.0 | 4.1 | 5.0 | |
| Special Aggregations | | | | | | | |
| Agriculture, Food and Beverage | 15 | 35 | 133.3 | 5.8 | 1.4 | 2.9 | |
| Fishing and Fish Processing | - | - | - | - 3.3 | - | 0.5 | |
| Logging and Forest Products | 105 | 50 | - 52.4 | - 14.7 | 1.9 | 3.7 | |
| Mining and Mineral Products | 365 | 380 | 4.1 | 17.1 | 14.8 | 2.1 | |

Source: Statistics Canada. Industry according to NAICS version used in each census. Unpublished data.

| 5 | | Business Locations- Number of Firms by Employment Size Range | | | | | | | | |
|------|--|--|---------|----------------------|---------|---------------|---------------|----------|--------|----------|
| | | Firms with no employees | | Firms with employees | | % change | E kootenay RD | | | |
| | | E kootenay RD | BC | E kootenay RD | BC | E kootenay RD | 1 to 19 | 20 to 49 | 50-199 | 200 Plus |
| 2008 | | 1,974 | 185,879 | 2,397 | 175,003 | - | 2,109 | 182 | 85 | 21 |
| 2009 | | 2,048 | 186,541 | 2,459 | 176,124 | 2.6 | 2,169 | 198 | 73 | 19 |
| 2010 | | 2,250 | 194,349 | 2,708 | 175,913 | 10.1 | 2,407 | 208 | 75 | 18 |
| 2011 | | 2,231 | 195,290 | 2,662 | 173,589 | - 1.7 | 2,376 | 195 | 75 | 16 |

Source: Business Register, Statistics Canada. In some areas, boundary changes/geocoding changes may cause large changes.

| 6 | | Municipal Residential Taxes and Charges on a Representative House | | | | | |
|------|---------|---|-------|-----------------|--|--|--|
| | | Fernie | | | | | |
| | | House Value | | Taxes & Charges | | | |
| Year | \$ | % change | \$ | % change | | | |
| 2008 | 325,702 | | 3,074 | | | | |
| 2009 | 333,161 | 2.3 | 3,182 | 3.5 | | | |
| 2010 | 374,982 | 12.6 | 3,512 | 10.4 | | | |
| 2011 | 408,761 | 9.0 | 3,717 | 5.8 | | | |
| 2012 | 385,297 | -5.7 | 3,719 | 0.1 | | | |

| Year | House Value | Taxes & Charges |
|------|-------------|-----------------|
| 2008 | 100 | 100 |
| 2009 | 102.3 | 103.5 |
| 2010 | 117.6 | 117.4 |
| 2011 | 125.6 | 120.7 |
| 2012 | 119.8 | 120.8 |

Source: Ministry of Community, Sport & Cultural Development http://www.cd.gov.bc.ca/lgd/infra/statistics_index.htm (No RD level figures)

Fernie City

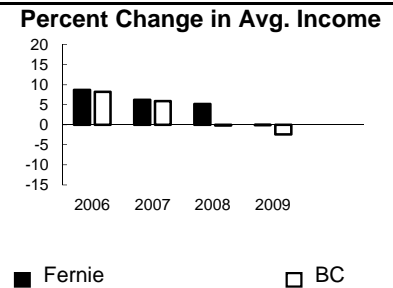
| 7 | Values of Building Permits | | | | | | | | | |
|--------|----------------------------|--------|--------------|-----------|-----------------|-----------|--------|--------------|------|------|
| | Residential | | | | Non-Residential | | | Total | | Year |
| | Number of Units | | Value \$'000 | | Value \$'000 | | | Value \$'000 | | |
| Fernie | BC | Fernie | BC | Fernie | BC | Fernie | BC | | | |
| 2007 | 80 | 40,932 | 24,885 | 8,611,723 | 6,079 | 3,932,968 | 30,964 | 12,544,691 | 2007 | |
| 2008 | 23 | 30,110 | 9,886 | 6,899,289 | 1,111 | 3,677,866 | 10,997 | 10,577,155 | 2008 | |
| 2009 | 58 | 18,607 | 12,064 | 4,491,075 | 457 | 3,138,810 | 12,521 | 7,629,885 | 2009 | |
| 2010 | 21 | 28,984 | 8,873 | 6,705,888 | 942 | 3,017,921 | 9,815 | 9,723,809 | 2010 | |
| 2011 | 21 | 25,745 | 10,542 | 6,113,406 | 421 | 3,136,361 | 10,963 | 9,249,767 | 2011 | |

Source: Statistics Canada

Note: Detailed non-residential permits data can be found on our Website: www.bcstats.gov.bc.ca

A dash can indicate a nil report, a value of less than \$500, or non-reporting. P indicates 'preliminary'.

| 8 | Personal Taxation Statistics | | | | | | Percent Change in Avg. Income | |
|------|------------------------------|-----------|---------------------|--------|----------------------|------|-------------------------------|--|
| | Total Income of All Returns | | | | | | | |
| | All Returns (number) | | Average Income (\$) | | % Change avg. income | | | |
| Year | Fernie | BC | Fernie | BC | Fernie | BC | | |
| 2005 | 4,480 | 3,154,090 | 35,675 | 35,601 | n/a | n/a | | |
| 2006 | 4,480 | 3,165,750 | 38,769 | 38,523 | 8.7 | 8.2 | | |
| 2007 | 4,710 | 3,287,750 | 41,175 | 40,802 | 6.2 | 5.9 | | |
| 2008 | 4,840 | 3,383,640 | 43,301 | 40,736 | 5.2 | -0.2 | | |
| 2009 | 4,890 | 3,406,860 | 43,272 | 39,754 | -0.1 | -2.4 | | |

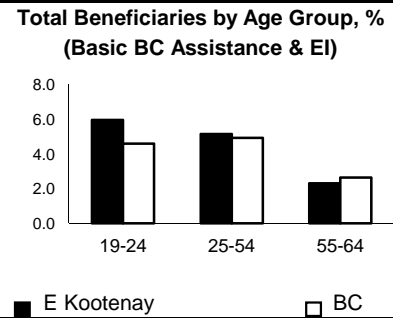


Taxation data available at: <http://www.bcstats.gov.bc.ca/data/dd/income.asp>

| 9 | Source of Total Income 2009 | | | | % Distribution, Total Income | | | | | |
|---------------|-----------------------------|------------|------------|----|------------------------------|----|----|---|---|---|
| | Fernie | | BC | | | | | | | |
| | \$Thousands | % of Total | % of Total | | | | | | | |
| Employment | 149,623 | 70.7 | 63.7 | 80 | 60 | 10 | 10 | 5 | 5 | 5 |
| Pension | 20,818 | 9.8 | 13.8 | 10 | 15 | 10 | 5 | 5 | 5 | 5 |
| Investment | 17,449 | 8.2 | 9.8 | 10 | 10 | 5 | 5 | 5 | 5 | 5 |
| Self-Employed | 8,894 | 4.2 | 5.3 | 5 | 5 | 5 | 5 | 5 | 5 | 5 |
| Other | 11,753 | 5.6 | 5.3 | 5 | 5 | 5 | 5 | 5 | 5 | 5 |
| Tax Exempt | 3,061 | 1.4 | 2.0 | 5 | 5 | 5 | 5 | 5 | 5 | 5 |
| Total | 211,598 | 100.0 | 100.0 | 80 | 60 | 10 | 10 | 5 | 5 | 5 |

Source: Canada Revenue Agency. Areas are defined by postal codes and may not match municipal boundaries.

| 9 | Dependency on the Safety Net | | | | | | Total Beneficiaries by Age Group, % (Basic BC Assistance & EI) | | |
|------------|---|--|------------|--|------------|--|--|-----|-----|
| | Percentage of Population by Age Receiving Benefits - September 2009 | | | | | | | | |
| | Age Group | BC Basic* Income Assistance Recipients (%) | | Employment Insurance Beneficiaries (%) | | Total of BC Basic Income Assistance & EI Beneficiaries (%) | | | |
| E Kootenay | | BC | E Kootenay | BC | E Kootenay | BC | | | |
| Under 19 | 2.6 | 2.7 | 3.9 | 2.6 | 6.0 | 4.6 | 8.0 | 6.0 | 4.6 |
| 19-24 | 2.3 | 2.1 | 3.6 | 3.1 | 5.1 | 4.9 | 6.0 | 5.1 | 4.9 |
| 25-54 | 1.7 | 1.9 | 1.9 | 2.0 | 2.3 | 2.6 | 4.0 | 2.3 | 2.6 |
| 55-64 | 0.4 | 0.7 | 3.2 | 2.8 | 4.6 | 4.4 | 2.0 | 2.3 | 2.6 |
| 19-64 | 1.4 | 1.7 | | | | | 6.0 | 5.1 | 4.9 |



* On temporary assistance only. Excluded are those on Continuous Assistance, aboriginals living on reserve, seniors/OAS, & children living with relatives.

Source: BC Stats (using administrative files from the BC Ministry of Housing & Social Development, and Human Resources & Social Development Canada)

Note: EI Beneficiaries reports now include regular, fishing and employment benefits, work sharing and support measures. The reports exclude sickness, maternity and parental benefits.

| 10 | Business Formations and Failures | | | | | | | | |
|--------|----------------------------------|----------|------|-----------|--------------|-------------|----------|----------|--------|
| | Incorporations | | | | Bankruptcies | | | | |
| | Number | | Year | Cranbrook | | Kootenay DR | | BC | |
| Fernie | BC | Business | | Consumer | Business | Consumer | Business | Consumer | |
| 2007 | 71 | 34,036 | 2005 | 2 | 62 | n.a. | n.a. | 786 | 8,168 |
| 2008 | 77 | 30,085 | 2006 | 8 | 46 | 31 | 224 | 585 | 7,020 |
| 2009 | 52 | 26,431 | 2007 | 1 | 33 | 14 | 197 | 470 | 6,651 |
| 2010 | 57 | 30,305 | 2008 | 3 | 36 | 16 | 180 | 454 | 7,293 |
| 2011 | 58 | 30,844 | 2009 | 1 | 69 | 9 | 339 | 380 | 10,639 |

Source: BC Ministry of Finance

Source: Office of the Superintendent of Bankruptcy, Government of Canada

Incorporations are counted in municipality of the registered office address which may differ from the actual business location.

Note: Bankruptcy is by urban postal code forward sortation area and is counted where it is filed.