

## Fernie City

1	General
<p>Incorporated in 1904, Fernie has a total land area of 16.05 square km (2006 Census). By highway the City is located 949 km east of Vancouver, 97 km east of Cranbrook and 217 km west of Lethbridge, ALTA. Fernie is in the East Kootenay Regional District.</p>	

2	Population Estimates				Age Distribution				
Annual Estimates					2011 Census			% Distribution, 2011 *	
Year	Fernie	% Change Prev. Year	BC	% Change Prev. Year	Fernie	Male	Female	Fernie	BC
					All ages	2,210	2,235	100.0	100.0
2007	4,293	n/a	4,309,632	n/a	0 - 14	305	340	14.4	15.4
2008	4,367	1.7	4,384,047	1.7	15 - 24	260	230	11.1	12.6
2009	4,420	1.2	4,459,947	1.7	25 - 44	720	685	31.6	26.3
2010	4,409	-0.2	4,529,647	1.6	45 - 64	680	665	30.2	30.0
2011	4,458	1.1	4,573,321	1.0	65 +	240	320	12.5	15.7

Source: Statistics Canada (as of July 1, includes estimate of Census undercount)

\* based on published totals, both sexes

**2006 Census Profiles can be found on our Website at <http://www.bcstats.gov.bc.ca/census.asp>**

3	Selected Census Characteristics					
Characteristics	Fernie			British Columbia		
	2001	2006	% Change	% Change	2001	2006
Population	4,611	4,217	- 8.5	5.3	3,907,738	4,113,487
Population (by citizenship)	4,550	4,145	- 8.9	5.3	3,868,875	4,074,385
Non-immigrant	4,030	3,730	- 7.4	2.9	2,821,870	2,904,240
Immigrant	495	415	- 16.2	10.8	1,009,820	1,119,215
Labour force (15+ yrs.)	2,670	2,565	- 3.9	8.1	2,059,950	2,226,380
Employees	2,215	2,225	0.5	9.2	1,715,600	1,873,050
Self-employed	375	330	- 12.0	7.4	291,455	313,000
Participation rate [ppt.=percentage points]	70.4%	72.6%	2.2 ppt.	0.4 ppt.	65.2%	65.6%
Unemployment rate	9.8%	5.7%	-4.1 ppt.	-2.5 ppt.	8.5%	6.0%
Total population 25 to 64 years	2,590	2,430	- 6.2	6.5	2,144,050	2,284,465
No certificate, diploma or degree	635	265	- 58.3	- 40.1	471,470	282,200
High school certificate or equivalent	565	740	31.0	27.7	462,925	591,275
Apprenticeship/trades certificate or diploma	410	405	- 1.2	- 7.4	295,180	273,450
College, CEGEP or other cert. or diploma	575	545	- 5.2	11.3	401,760	447,005
University certificate, diploma or degree	410	475	15.9	34.7	512,715	690,535
Bachelor's degree	265	245	- 7.5	23.0	282,800	347,715
Census families	1,280	1,180	- 7.8	6.9	1,086,030	1,161,420
Lone-parent families	155	140	- 9.7	4.0	168,420	175,165
Households	1,940	1,875	- 3.4	7.1	1,534,335	1,643,150
1-family households	1,270	1,175	- 7.5	6.1	1,012,925	1,074,850
Multi-family households	10	-	- 100.0	18.4	35,050	41,510
Non-family households	665	695	4.5	8.3	486,355	526,785
Median Income (2000 & 2005)	\$ 20,277	\$ 25,560	26.1	12.5	\$ 22,095	\$ 24,867
Males	\$ 30,272	\$ 38,859	28.4	9.0	\$ 28,976	\$ 31,598
Females	\$ 15,701	\$ 16,148	2.8	14.0	\$ 17,546	\$ 19,997
Median Family Income (2000 & 2005)	\$ 59,422	\$ 73,511	23.7	20.0	\$ 54,840	\$ 65,787
Economic Families	1,295	1,195	- 7.7	6.5	1,044,850	1,112,810
2001 Incidence, low income    2006 Prevalence, low income	9.6%	8.8%	-0.8 ppt.	-0.6 ppt.	13.9%	13.3%
Unattached persons, 15+	835	810	- 3.0	4.7	576,825	603,880
Incidence, low income	34.6%	34.6%	0.0 ppt.	-1.4 ppt.	38.1%	36.7%
Population in private hh.	4,550	4,130	- 9.2	5.1	3,785,270	3,978,215
Incidence, low income	13.0%	13.9%	0.9 ppt.	-0.5 ppt.	17.8%	17.3%
Dwellings	1,945	1,875	- 3.6	7.1	1,534,335	1,643,150
Owned	1,375	1,410	2.5	12.5	1,017,485	1,145,045
Rented	565	465	- 17.7	- 3.6	512,360	493,995
Average gross rent	\$ 607	\$ 643	5.9	10.4	\$ 750	\$ 828
Average owners' payments	\$ 784	\$ 923	17.7	17.1	\$ 904	\$ 1,059
Avg. value, owned dwell.	\$ 167,788	\$ 317,912	89.5	81.5	\$ 230,645	\$ 418,703

Source: Statistics Canada. Notes: incomes are for 2005 and 2000; rent/owner's payments are restricted to non-farm, non-reserve private dwellings.

## Fernie City

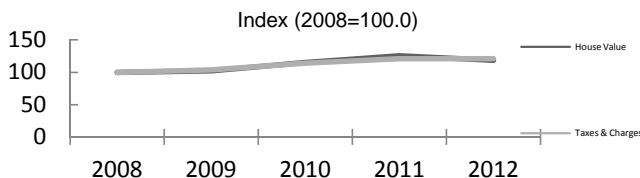
4		Labour Force by Industry (NAICS)					
		Fernie			BC	% Distribution, 2006	
Industry	2001	2006	% Change	% change	Fernie	BC	
Total labour force	2,665	2,565	- 3.8	8.1	100.0	100.0	
Industry - Not applicable	80	-	- 100.0	- 26.6	-	1.5	
<b>All industries (Experienced LF)</b>	<b>2,590</b>	<b>2,560</b>	<b>- 1.2</b>	<b>8.9</b>	<b>99.8</b>	<b>98.5</b>	
111-112 Farms	-	20	-	5.2	0.8	1.8	
113 Forestry and logging	15	-	- 100.0	- 10.0	-	1.0	
114 Fishing, hunting and trapping	-	-	-	1.3	-	0.2	
1151/2 Support activities for farms	-	-	-	11.3	-	0.1	
1153 Support activities for forestry	-	25	-	- 21.5	1.0	0.3	
21 Mining and oil and gas extraction	360	365	1.4	42.6	14.2	0.9	
22 Utilities	20	-	- 100.0	- 3.4	-	0.5	
23 Construction	175	225	28.6	39.9	8.8	7.5	
31-33 Manufacturing	125	70	- 44.0	- 2.7	2.7	8.5	
311 Food manufacturing	10	15	50.0	3.6	0.6	1.0	
321 Wood product manufacturing	85	15	- 82.4	- 16.1	0.6	1.7	
322 Paper manufacturing	-	-	-	- 13.5	-	0.6	
41 Wholesale trade	50	100	100.0	11.6	3.9	4.1	
44-45 Retail trade	285	290	1.8	6.9	11.3	11.2	
441 Motor vehicle and parts dealers	35	20	- 42.9	9.0	0.8	1.1	
445 Food and beverage stores	110	100	- 9.1	8.4	3.9	2.9	
448 Clothing & clothing accessories	10	15	50.0	9.2	0.6	1.1	
452 General merchandise stores	10	10	-	6.5	0.4	1.2	
48-49 Transportation & warehousing	65	30	- 53.8	0.6	1.2	5.2	
51 Information and cultural industries	30	45	50.0	- 5.3	1.8	2.6	
52 Finance and insurance	65	55	- 15.4	4.5	2.1	3.8	
53 Real estate & rental/leasing	30	95	216.7	22.1	3.7	2.3	
54 Prof'sonal, scientific & tech. serv.	100	130	30.0	18.6	5.1	7.3	
55 Mgmt. of companies/ent'prises	-	-	-	126.6	-	0.1	
56 Admin+support, waste mgmnt srv.	30	55	83.3	20.4	2.1	4.4	
61 Educational services	160	175	9.4	9.2	6.8	6.9	
62 Health care and social assistance	280	160	- 42.9	6.5	6.2	9.6	
71 Arts, entertainment and recreation	155	95	- 38.7	11.3	3.7	2.3	
72 Accommodation and food services	490	420	- 14.3	7.7	16.4	8.1	
721 Accommodation services	280	215	- 23.2	2.5	8.4	1.7	
722 Food services & drinking places	215	205	- 4.7	9.2	8.0	6.4	
81 Other services (excl. public admin.)	60	90	50.0	11.8	3.5	4.9	
91 Public administration	75	105	40.0	- 2.0	4.1	5.0	
Special Aggregations							
Agriculture, Food and Beverage	15	35	133.3	5.8	1.4	2.9	
Fishing and Fish Processing	-	-	-	- 3.3	-	0.5	
Logging and Forest Products	105	50	- 52.4	- 14.7	1.9	3.7	
Mining and Mineral Products	365	380	4.1	17.1	14.8	2.1	

Source: Statistics Canada. Industry according to NAICS version used in each census. Unpublished data.

5		Business Locations- Number of Firms by Employment Size Range								
		Firms with no employees		Firms with employees		% change	E kootenay RD			
		E kootenay RD	BC	E kootenay RD	BC	E kootenay RD	1 to 19	20 to 49	50-199	200 Plus
2008		1,974	185,879	2,397	175,003	-	2,109	182	85	21
2009		2,048	186,541	2,459	176,124	2.6	2,169	198	73	19
2010		2,250	194,349	2,708	175,913	10.1	2,407	208	75	18
2011		2,231	195,290	2,662	173,589	- 1.7	2,376	195	75	16

Source: Business Register, Statistics Canada. In some areas, boundary changes/geocoding changes may cause large changes.

6		Municipal Residential Taxes and Charges on a Representative House					
		Fernie					
		House Value		Taxes & Charges			
Year	\$	% change	\$	% change			
2008	325,702		3,074				
2009	333,161	2.3	3,182	3.5			
2010	374,982	12.6	3,512	10.4			
2011	408,761	9.0	3,717	5.8			
2012	385,297	-5.7	3,719	0.1			



Source: Ministry of Community, Sport & Cultural Development [http://www.cd.gov.bc.ca/lgd/infra/statistics\\_index.htm](http://www.cd.gov.bc.ca/lgd/infra/statistics_index.htm) (No RD level figures)

## Fernie City

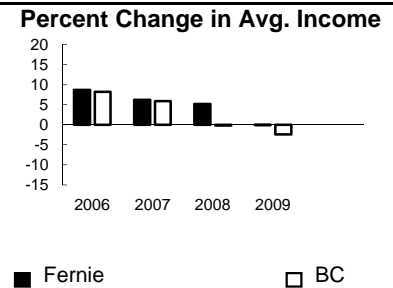
7	Values of Building Permits									
	Residential				Non-Residential			Total		Year
	Number of Units		Value \$'000		Value \$'000			Value \$'000		
Fernie	BC	Fernie	BC	Fernie	BC	Fernie	BC			
2007	80	40,932	24,885	8,611,723	6,079	3,932,968	30,964	12,544,691	2007	
2008	23	30,110	9,886	6,899,289	1,111	3,677,866	10,997	10,577,155	2008	
2009	58	18,607	12,064	4,491,075	457	3,138,810	12,521	7,629,885	2009	
2010	21	28,984	8,873	6,705,888	942	3,017,921	9,815	9,723,809	2010	
2011	21	25,745	10,542	6,113,406	421	3,136,361	10,963	9,249,767	2011	

Source: Statistics Canada

Note: Detailed non-residential permits data can be found on our Website: www.bcstats.gov.bc.ca

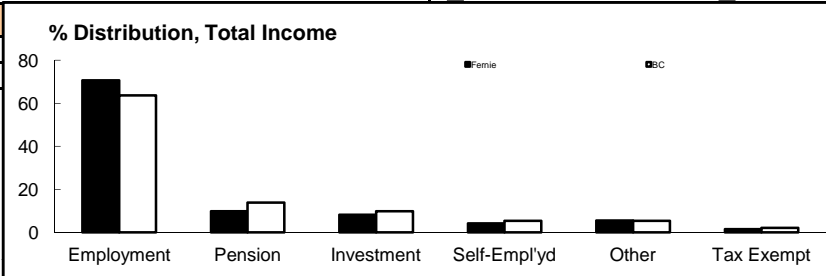
A dash can indicate a nil report, a value of less than \$500, or non-reporting. P indicates 'preliminary'.

8	Personal Taxation Statistics						Percent Change in Avg. Income	
	Total Income of All Returns							
	All Returns (number)		Average Income (\$)		% Change avg. income			
Year	Fernie	BC	Fernie	BC	Fernie	BC		
2005	4,480	3,154,090	35,675	35,601	n/a	n/a		
2006	4,480	3,165,750	38,769	38,523	8.7	8.2		
2007	4,710	3,287,750	41,175	40,802	6.2	5.9		
2008	4,840	3,383,640	43,301	40,736	5.2	-0.2		
2009	4,890	3,406,860	43,272	39,754	-0.1	-2.4		



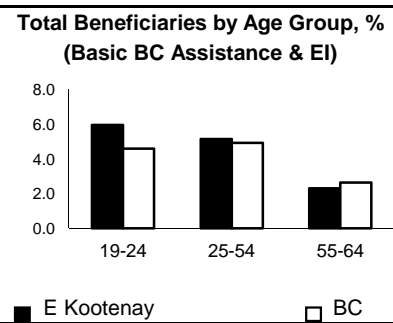
Taxation data available at: <http://www.bcstats.gov.bc.ca/data/dd/income.asp>

9	Source of Total Income 2009				% Distribution, Total Income						
	Fernie		BC								
	\$Thousands	% of Total	% of Total								
Employment	149,623	70.7	63.7	70.7	63.7						
Pension	20,818	9.8	13.8	9.8	13.8						
Investment	17,449	8.2	9.8	8.2	9.8						
Self-Employed	8,894	4.2	5.3	4.2	5.3						
Other	11,753	5.6	5.3	5.6	5.3						
Tax Exempt	3,061	1.4	2.0	1.4	2.0						
Total	211,598	100.0	100.0	100.0	100.0						



Source: Canada Revenue Agency. Areas are defined by postal codes and may not match municipal boundaries.

9	Dependency on the Safety Net						Total Beneficiaries by Age Group, % (Basic BC Assistance & EI)		
	Percentage of Population by Age Receiving Benefits - September 2009								
	Age Group	BC Basic* Income Assistance Recipients (%)		Employment Insurance Beneficiaries (%)		Total of BC Basic Income Assistance & EI Beneficiaries (%)			
E Kootenay		BC	E Kootenay	BC	E Kootenay	BC			
Under 19	2.6	2.7							
19-24	2.3	2.1	3.9	2.6	6.0	4.6			
25-54	1.7	1.9	3.6	3.1	5.1	4.9			
55-64	0.4	0.7	1.9	2.0	2.3	2.6			
19-64	1.4	1.7	3.2	2.8	4.6	4.4			



\* On temporary assistance only. Excluded are those on Continuous Assistance, aboriginals living on reserve, seniors/OAS, & children living with relatives.

Source: BC Stats (using administrative files from the BC Ministry of Housing & Social Development, and Human Resources & Social Development Canada)

Note: EI Beneficiaries reports now include regular, fishing and employment benefits, work sharing and support measures. The reports exclude sickness, maternity and parental benefits.

10	Business Formations and Failures								
	Incorporations			Bankruptcies					
	Number		Year	Cranbrook		Kootenay DR		BC	
Fernie	BC	Business		Consumer	Business	Consumer	Business	Consumer	
2007	71	34,036	2005	2	62	n.a.	n.a.	786	8,168
2008	77	30,085	2006	8	46	31	224	585	7,020
2009	52	26,431	2007	1	33	14	197	470	6,651
2010	57	30,305	2008	3	36	16	180	454	7,293
2011	58	30,844	2009	1	69	9	339	380	10,639

Source: BC Ministry of Finance

Source: Office of the Superintendent of Bankruptcy, Government of Canada

Incorporations are counted in municipality of the registered office address which may differ from the actual business location.

Note: Bankruptcy is by urban postal code forward sortation area and is counted where it is filed.