

Fruitvale Village

1

General

Incorporated in 1952, Fruitvale has a total land area of 2.66 square km (2006 Census). By highway the Village is 16 km east of Trail. Fruitvale is in the Kootenay-Boundary Regional District.

2

Population Estimates

Age Distribution

Annual Estimates					2011 Census			% Distribution, 2011 *	
Year	Fruitvale	% Change Prev. Year	BC	% Change Prev. Year	Fruitvale	Male	Female	Fruitvale	BC
2007	2,010	n/a	4,309,632	n/a	All ages	1,000	1,010	100.0	100.0
2008	2,049	1.9	4,384,047	1.7	0 - 14	170	145	15.6	15.4
2009	2,034	-0.7	4,459,947	1.7	15 - 24	135	120	12.9	12.6
2010	2,012	-1.1	4,529,647	1.6	25 - 44	210	220	20.8	26.3
2011	2,022	0.5	4,573,321	1.0	45 - 64	330	325	32.3	30.0
					65 +	165	200	18.1	15.7

Source: Statistics Canada (as of July 1, includes estimate of Census undercount)

* based on published totals, both sexes

2006 Census Profiles can be found on our Website at <http://www.bcstats.gov.bc.ca/census.asp>

3

Selected Census Characteristics

Characteristics	Fruitvale			British Columbia		
	2001	2006	% Change	% Change	2001	2006
Population	2,025	1,952	- 3.6	5.3	3,907,738	4,113,487
Population (by citizenship)	2,025	1,950	- 3.7	5.3	3,868,875	4,074,385
Non-immigrant	1,905	1,830	- 3.9	2.9	2,821,870	2,904,240
Immigrant	115	120	4.3	10.8	1,009,820	1,119,215
Labour force (15+ yrs.)	970	930	- 4.1	8.1	2,059,950	2,226,380
Employees	910	830	- 8.8	9.2	1,715,600	1,873,050
Self-employed	40	55	37.5	7.4	291,455	313,000
Participation rate [ppt.=percentage points]	61.4%	59.2%	-2.2 ppt.	0.4 ppt.	65.2%	65.6%
Unemployment rate	7.2%	8.1%	0.9 ppt.	-2.5 ppt.	8.5%	6.0%
Total population 25 to 64 years	1,060	1,060	-	6.5	2,144,050	2,284,465
No certificate, diploma or degree	250	155	- 38.0	- 40.1	471,470	282,200
High school certificate or equivalent	240	270	12.5	27.7	462,925	591,275
Apprenticeship/trades certificate or diploma	235	235	-	- 7.4	295,180	273,450
College, CEGEP or other cert. or diploma	255	250	- 2.0	11.3	401,760	447,005
University certificate, diploma or degree	80	145	81.3	34.7	512,715	690,535
Bachelor's degree	50	35	- 30.0	23.0	282,800	347,715
Census families	580	620	6.9	6.9	1,086,030	1,161,420
Lone-parent families	80	110	37.5	4.0	168,420	175,165
Households	770	795	3.2	7.1	1,534,335	1,643,150
1-family households	575	595	3.5	6.1	1,012,925	1,074,850
Multi-family households	-	15	-	18.4	35,050	41,510
Non-family households	195	185	- 5.1	8.3	486,355	526,785
Median Income (2000 & 2005)	\$ 20,411	\$ 22,786	11.6	12.5	\$ 22,095	\$ 24,867
Males	\$ 35,790	\$ 40,010	11.8	9.0	\$ 28,976	\$ 31,598
Females	\$ 12,254	\$ 15,741	28.5	14.0	\$ 17,546	\$ 19,997
Median Family Income (2000 & 2005)	\$ 55,475	\$ 59,456	7.2	20.0	\$ 54,840	\$ 65,787
Economic Families	580	605	4.3	6.5	1,044,850	1,112,810
2001 Incidence, low income 2006 Prevalence, low income	12.1%	11.5%	-0.6 ppt.	-0.6 ppt.	13.9%	13.3%
Unattached persons, 15+	205	205	-	4.7	576,825	603,880
Incidence, low income	36.0%	29.3%	-6.7 ppt.	-1.4 ppt.	38.1%	36.7%
Population in private hh.	2,025	1,955	- 3.5	5.1	3,785,270	3,978,215
Incidence, low income	13.2%	13.1%	-0.1 ppt.	-0.5 ppt.	17.8%	17.3%
Dwellings	770	795	3.2	7.1	1,534,335	1,643,150
Owned	605	625	3.3	12.5	1,017,485	1,145,045
Rented	165	165	-	- 3.6	512,360	493,995
Average gross rent	\$ 464	\$ 542	16.8	10.4	\$ 750	\$ 828
Average owners' payments	\$ 675	\$ 715	5.9	17.1	\$ 904	\$ 1,059
Avg. value, owned dwell.	\$ 113,940	\$ 145,158	27.4	81.5	\$ 230,645	\$ 418,703

Source: Statistics Canada. Notes: incomes are for 2005 and 2000; rent/owner's payments are restricted to non-farm, non-reserve private dwellings.

Fruitvale Village

4		Labour Force by Industry (NAICS)					
		Fruitvale			BC	% Distribution, 2006	
Industry	2001	2006	% Change	% change	Fruitvale	BC	
Total labour force	970	930	- 4.1	8.1	100.0	100.0	
Industry - Not applicable	15	50	233.3	- 26.6	5.4	1.5	
All industries (Experienced LF)	955	880	- 7.9	8.9	94.6	98.5	
111-112 Farms	-	-	-	5.2	-	1.8	
113 Forestry and logging	-	-	-	- 10.0	-	1.0	
114 Fishing, hunting and trapping	-	-	-	1.3	-	0.2	
1151/2 Support activities for farms	-	-	-	11.3	-	0.1	
1153 Support activities for forestry	10	-	- 100.0	- 21.5	-	0.3	
21 Mining and oil and gas extraction	10	15	50.0	42.6	1.6	0.9	
22 Utilities	45	15	- 66.7	- 3.4	1.6	0.5	
23 Construction	45	75	66.7	39.9	8.1	7.5	
31-33 Manufacturing	230	180	- 21.7	- 2.7	19.4	8.5	
311 Food manufacturing	-	-	-	3.6	-	1.0	
321 Wood product manufacturing	30	25	- 16.7	- 16.1	2.7	1.7	
322 Paper manufacturing	10	-	- 100.0	- 13.5	-	0.6	
41 Wholesale trade	20	-	- 100.0	11.6	-	4.1	
44-45 Retail trade	130	155	19.2	6.9	16.7	11.2	
441 Motor vehicle and parts dealers	20	10	- 50.0	9.0	1.1	1.1	
445 Food and beverage stores	60	20	- 66.7	8.4	2.2	2.9	
448 Clothing & clothing accessories	-	10	-	9.2	1.1	1.1	
452 General merchandise stores	20	50	150.0	6.5	5.4	1.2	
48-49 Transportation & warehousing	30	55	83.3	0.6	5.9	5.2	
51 Information and cultural industries	20	10	- 50.0	- 5.3	1.1	2.6	
52 Finance and insurance	45	30	- 33.3	4.5	3.2	3.8	
53 Real estate & rental/leasing	30	25	- 16.7	22.1	2.7	2.3	
54 Prof'sonal, scientific & tech. serv.	20	25	25.0	18.6	2.7	7.3	
55 Mgmt. of companies/ent'prises	-	-	-	126.6	-	0.1	
56 Admin+support, waste mgmnt srv.	25	40	60.0	20.4	4.3	4.4	
61 Educational services	40	35	- 12.5	9.2	3.8	6.9	
62 Health care and social assistance	100	90	- 10.0	6.5	9.7	9.6	
71 Arts, entertainment and recreation	-	10	-	11.3	1.1	2.3	
72 Accommodation and food services	65	45	- 30.8	7.7	4.8	8.1	
721 Accommodation services	10	15	50.0	2.5	1.6	1.7	
722 Food services & drinking places	60	25	- 58.3	9.2	2.7	6.4	
81 Other services (excl. public admin.)	50	40	- 20.0	11.8	4.3	4.9	
91 Public administration	45	25	- 44.4	- 2.0	2.7	5.0	
Special Aggregations							
Agriculture, Food and Beverage	-	10	-	5.8	1.1	2.9	
Fishing and Fish Processing	-	-	-	- 3.3	-	0.5	
Logging and Forest Products	50	25	- 50.0	- 14.7	2.7	3.7	
Mining and Mineral Products	165	145	- 12.1	17.1	15.6	2.1	

Source: Statistics Canada. Industry according to NAICS version used in each census. Unpublished data.

5		Business Locations- Number of Firms by Employment Size Range								
		Firms with no employees		Firms with employees		% change	Koot-Bound RD			
		Koot-Bound RD	BC	Koot-Bound R	BC	Koot-Bound RD	1 to 19	20 to 49	50-199	200 Plus
2008		1,030	185,879	1,092	175,003	-	968	83	33	8
2009		1,036	186,541	1,157	176,124	6.0	1,035	78	36	8
2010		1,083	194,349	1,192	175,913	3.0	1,070	77	39	6
2011		1,084	195,290	1,185	173,589	- 0.6	1,061	81	36	7

Source: Business Register, Statistics Canada. In some areas, boundary changes/geocoding changes may cause large changes.

6		Municipal Residential Taxes and Charges on a Representative House					
		Fruitvale					
Year	House Value		Taxes & Charges		Index (2008=100.0)		
	\$	% change	\$	% change			
2008	195,858		2,837		House Value		
2009	196,667	0.4	2,895	2.0	Taxes & Charges		
2010	210,054	6.8	3,024	4.4			
2011	215,312	2.5	3,117	3.1			
2012	215,719	0.2	3,158	1.3			

Source: Ministry of Community, Sport & Cultural Development http://www.cd.gov.bc.ca/lgd/infra/statistics_index.htm (No RD level figures)

Fruitvale Village

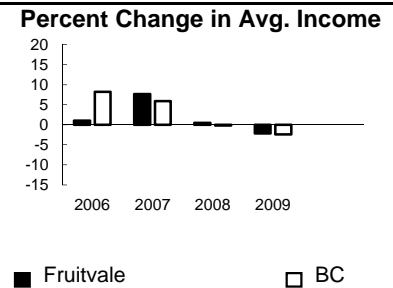
7	Values of Building Permits								
	Residential				Non-Residential		Total		Year
	Number of Units		Value \$'000		Value \$'000		Value \$'000		
Fruitvale	BC	Fruitvale	BC	Fruitvale	BC	Fruitvale	BC		
2007	6	40,932	1,375	8,611,723	75	3,932,968	1,450	12,544,691	2007
2008	72	30,110	10,924	6,899,289	158	3,677,866	11,082	10,577,155	2008
2009	1	18,607	543	4,491,075	50	3,138,810	593	7,629,885	2009
2010	6	28,984	1,411	6,705,888	269	3,017,921	1,680	9,723,809	2010
2011	1	25,745	451	6,113,406	153	3,136,361	604	9,249,767	2011

Source: Statistics Canada

Note: Detailed non-residential permits data can be found on our Website: www.bcstats.gov.bc.ca

A dash can indicate a nil report, a value of less than \$500, or non-reporting. P indicates 'preliminary'.

8	Personal Taxation Statistics					Percent Change in Avg. Income	
	Total Income of All Returns						
	All Returns (number)		Average Income (\$)		% Change avg. income		
Year	Fruitvale	BC	Fruitvale	BC	Fruitvale	BC	
2005	2,950	3,154,090	36,361	35,601	n/a	n/a	
2006	2,950	3,165,750	36,735	38,523	1.0	8.2	
2007	3,060	3,287,750	39,546	40,802	7.7	5.9	
2008	3,100	3,383,640	39,725	40,736	0.5	-0.2	
2009	3,050	3,406,860	38,873	39,754	-2.1	-2.4	



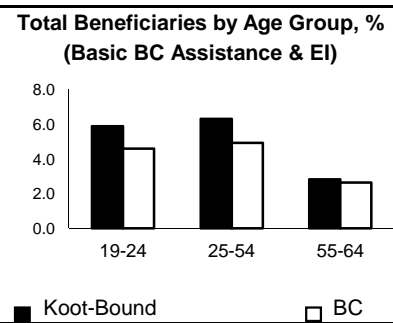
Taxation data available at: <http://www.bcstats.gov.bc.ca/data/dd/income.asp>

9	Source of Total Income 2009			% Distribution, Total Income					
	Fruitvale		BC						
	\$Thousands	% of Total	% of Total						
Employment	83,029	70.0	63.7						
Pension	19,168	16.2	13.8						
Investment	5,057	4.3	9.8						
Self-Employed	2,435	2.1	5.3						
Other	6,119	5.2	5.3						
Tax Exempt	2,746	2.3	2.0						
Total	118,563	100.0	100.0						



Source: Canada Revenue Agency. Areas are defined by postal codes and may not match municipal boundaries.

9	Dependency on the Safety Net						Total Beneficiaries by Age Group, % (Basic BC Assistance & EI)		
	Percentage of Population by Age Receiving Benefits - September 2009								
	Age Group	BC Basic* Income Assistance Recipients (%)		Employment Insurance Beneficiaries (%)		Total of BC Basic Income Assistance & EI Beneficiaries (%)			
Koot-Bound		BC	Koot-Bound	BC	Koot-Bound	BC			
Under 19	3.0	2.7							
19-24	2.2	2.1	3.7	2.6	5.9	4.6			
25-54	2.5	1.9	3.9	3.1	6.3	4.9			
55-64	0.9	0.7	1.9	2.0	2.8	2.6			
19-64	2.0	1.7	3.3	2.8	5.3	4.4			



* On temporary assistance only. Excluded are those on Continuous Assistance, aboriginals living on reserve, seniors/OAS, & children living with relatives.

Source: BC Stats (using administrative files from the BC Ministry of Housing & Social Development, and Human Resources & Social Development Canada)

Note: EI Beneficiaries reports now include regular, fishing and employment benefits, work sharing and support measures. The reports exclude sickness, maternity and parental benefits.

10	Business Formations and Failures								
	Incorporations			Bankruptcies					
	Number		Year	Trials		Kootenay DR		BC	
Fruitvale	BC	Business		Consumer	Business	Consumer	Business	Consumer	
2007	6	34,036	2005	2	23	n.a.	n.a.	786	8,168
2008	9	30,085	2006	1	17	31	224	585	7,020
2009	12	26,431	2007	0	17	14	197	470	6,651
2010	4	30,305	2008	0	22	16	180	454	7,293
2011	9	30,844	2009	1	18	9	339	380	10,639

Source: BC Ministry of Finance

Source: Office of the Superintendent of Bankruptcy, Government of Canada

Incorporations are counted in municipality of the registered office address which may differ from the actual business location.

Note: Bankruptcy is by urban postal code forward sortation area and is counted where it is filed.