

## Golden Town

<b>1</b>	<b>General</b>
<p>Incorporated in 1957, Golden has a total land area of 11.02 square km (2006 Census). By highway the Town is 148 km east of Revelstoke, 105 km north of Radium Hot Springs and 265 km west of Calgary. Golden is in the Columbia-Shuswap Regional District.</p>	

<b>2</b>	<b>Population Estimates</b>				<b>Age Distribution</b>				
<b>Annual Estimates</b>					<b>2011 Census</b>			<b>% Distribution, 2011 *</b>	
Year	Golden	% Change Prev. Year	BC	% Change Prev. Year	Golden	Male	Female	Golden	BC
2007	3,858	n/a	4,309,632	n/a	All ages	1,875	1,825	100.0	100.0
2008	3,914	1.5	4,384,047	1.7	0 - 14	310	305	16.8	15.4
2009	3,964	1.3	4,459,947	1.7	15 - 24	230	205	11.9	12.6
2010	3,934	-0.8	4,529,647	1.6	25 - 44	575	570	30.7	26.3
2011	3,934	0.0	4,573,321	1.0	45 - 64	565	480	28.2	30.0
					65 +	190	275	12.4	15.7

Source: Statistics Canada (as of July 1, includes estimate of Census undercount)

\* based on published totals, both sexes

**2006 Census Profiles can be found on our Website at <http://www.bcstats.gov.bc.ca/census.asp>**

<b>3</b>	<b>Selected Census Characteristics</b>						
			<b>Golden</b>			<b>British Columbia</b>	
Characteristics	2001	2006	% Change	% Change	2001	2006	
Population	4,020	3,811	- 5.2	5.3	3,907,738	4,113,487	
Population (by citizenship)	3,970	3,775	- 4.9	5.3	3,868,875	4,074,385	
Non-immigrant	3,605	3,285	- 8.9	2.9	2,821,870	2,904,240	
Immigrant	350	470	34.3	10.8	1,009,820	1,119,215	
Labour force (15+ yrs.)	2,200	2,255	2.5	8.1	2,059,950	2,226,380	
Employees	1,890	1,985	5.0	9.2	1,715,600	1,873,050	
Self-employed	270	255	- 5.6	7.4	291,455	313,000	
Participation rate [ppt.=percentage points]	70.0%	71.9%	1.9 ppt.	0.4 ppt.	65.2%	65.6%	
Unemployment rate	8.7%	7.5%	-1.2 ppt.	-2.5 ppt.	8.5%	6.0%	
Total population 25 to 64 years	2,090	2,195	5.0	6.5	2,144,050	2,284,465	
No certificate, diploma or degree	670	325	- 51.5	- 40.1	471,470	282,200	
High school certificate or equivalent	560	805	43.8	27.7	462,925	591,275	
Apprenticeship/trades certificate or diploma	260	265	1.9	- 7.4	295,180	273,450	
College, CEGEP or other cert. or diploma	335	390	16.4	11.3	401,760	447,005	
University certificate, diploma or degree	250	410	64.0	34.7	512,715	690,535	
Bachelor's degree	170	205	20.6	23.0	282,800	347,715	
Census families	1,050	1,030	- 1.9	6.9	1,086,030	1,161,420	
Lone-parent families	155	110	- 29.0	4.0	168,420	175,165	
Households	1,555	1,595	2.6	7.1	1,534,335	1,643,150	
1-family households	1,015	990	- 2.5	6.1	1,012,925	1,074,850	
Multi-family households	15	20	33.3	18.4	35,050	41,510	
Non-family households	520	590	13.5	8.3	486,355	526,785	
Median Income (2000 & 2005)	\$ 20,320	\$ 24,514	20.6	12.5	\$ 22,095	\$ 24,867	
Males	\$ 33,451	\$ 34,485	3.1	9.0	\$ 28,976	\$ 31,598	
Females	\$ 15,100	\$ 19,708	30.5	14.0	\$ 17,546	\$ 19,997	
Median Family Income (2000 & 2005)	\$ 55,391	\$ 69,296	25.1	20.0	\$ 54,840	\$ 65,787	
Economic Families	1,035	1,020	- 1.4	6.5	1,044,850	1,112,810	
2001 Incidence, low income    2006 Prevalence, low income	8.0%	9.8%	1.8 ppt.	-0.6 ppt.	13.9%	13.3%	
Unattached persons, 15+	695	705	1.4	4.7	576,825	603,880	
Incidence, low income	43.7%	27.7%	-16.0 ppt.	-1.4 ppt.	38.1%	36.7%	
Population in private hh.	3,950	3,765	- 4.7	5.1	3,785,270	3,978,215	
Incidence, low income	14.5%	14.0%	-0.5 ppt.	-0.5 ppt.	17.8%	17.3%	
Dwellings	1,555	1,595	2.6	7.1	1,534,335	1,643,150	
Owned	1,120	1,145	2.2	12.5	1,017,485	1,145,045	
Rented	430	450	4.7	- 3.6	512,360	493,995	
Average gross rent	\$ 586	\$ 648	10.6	10.4	\$ 750	\$ 828	
Average owners' payments	\$ 725	\$ 869	19.9	17.1	\$ 904	\$ 1,059	
Avg. value, owned dwell.	\$ 137,573	\$ 243,990	77.4	81.5	\$ 230,645	\$ 418,703	

Source: Statistics Canada. Notes: incomes are for 2005 and 2000; rent/owner's payments are restricted to non-farm, non-reserve private dwellings.

## Golden Town

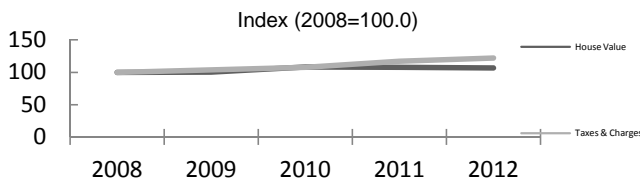
4		Labour Force by Industry (NAICS)					
		Golden			BC	% Distribution, 2006	
Industry		2001	2006	% Change	% change	Golden	BC
Total labour force		2,200	2,255	2.5	8.1	100.0	100.0
Industry - Not applicable		35	10	- 71.4	- 26.6	0.4	1.5
<b>All industries (Experienced LF)</b>		2,160	2,245	3.9	8.9	99.6	98.5
111-112 Farms		-	-	-	5.2	-	1.8
113 Forestry and logging		130	70	- 46.2	- 10.0	3.1	1.0
114 Fishing, hunting and trapping		-	10	-	1.3	0.4	0.2
1151/2 Support activities for farms		-	-	-	11.3	-	0.1
1153 Support activities for forestry		10	55	450.0	- 21.5	2.4	0.3
21 Mining and oil and gas extraction		10	10	-	42.6	0.4	0.9
22 Utilities		10	-	- 100.0	- 3.4	-	0.5
23 Construction		150	290	93.3	39.9	12.9	7.5
31-33 Manufacturing		260	260	-	- 2.7	11.5	8.5
311 Food manufacturing		-	-	-	3.6	-	1.0
321 Wood product manufacturing		205	250	22.0	- 16.1	11.1	1.7
322 Paper manufacturing		-	-	-	- 13.5	-	0.6
41 Wholesale trade		20	25	25.0	11.6	1.1	4.1
44-45 Retail trade		290	230	- 20.7	6.9	10.2	11.2
441 Motor vehicle and parts dealers		15	15	-	9.0	0.7	1.1
445 Food and beverage stores		90	70	- 22.2	8.4	3.1	2.9
448 Clothing & clothing accessories		20	20	-	9.2	0.9	1.1
452 General merchandise stores		-	-	-	6.5	-	1.2
48-49 Transportation & warehousing		235	200	- 14.9	0.6	8.9	5.2
51 Information and cultural industries		20	10	- 50.0	- 5.3	0.4	2.6
52 Finance and insurance		30	60	100.0	4.5	2.7	3.8
53 Real estate & rental/leasing		15	20	33.3	22.1	0.9	2.3
54 Prof'sonal, scientific & tech. serv.		60	50	- 16.7	18.6	2.2	7.3
55 Mgmt. of companies/ent'prises		10	-	- 100.0	126.6	-	0.1
56 Admin+support, waste mgmnt srv.		15	45	200.0	20.4	2.0	4.4
61 Educational services		120	85	- 29.2	9.2	3.8	6.9
62 Health care and social assistance		130	155	19.2	6.5	6.9	9.6
71 Arts, entertainment and recreation		85	70	- 17.6	11.3	3.1	2.3
72 Accommodation and food services		435	450	3.4	7.7	20.0	8.1
721 Accommodation services		155	165	6.5	2.5	7.3	1.7
722 Food services & drinking places		280	285	1.8	9.2	12.6	6.4
81 Other services (excl. public admin.)		75	40	- 46.7	11.8	1.8	4.9
91 Public administration		75	105	40.0	- 2.0	4.7	5.0
Special Aggregations	Agriculture, Food and Beverage	15	-	- 100.0	5.8	-	2.9
	Fishing and Fish Processing	-	-	-	- 3.3	-	0.5
	Logging and Forest Products	355	380	7.0	- 14.7	16.9	3.7
	Mining and Mineral Products	30	10	- 66.7	17.1	0.4	2.1

Source: Statistics Canada. Industry according to NAICS version used in each census. Unpublished data.

5		Business Locations- Number of Firms by Employment Size Range								
		Firms with no employees		Firms with employees		% change	Columbia-Sh RD			
		Columbia-Sh RD	BC	Columbia-Sh F	BC	Columbia-Sh RD	1 to 19	20 to 49	50-199	200 Plus
2008		2,417	185,879	2,499	175,003	-	2,246	171	72	10
2009		2,300	186,541	2,438	176,124	- 2.4	2,195	167	67	9
2010		2,251	194,349	2,213	175,913	- 9.2	2,000	144	62	7
2011		2,282	195,290	2,153	173,589	- 2.7	1,964	126	56	7

Source: Business Register, Statistics Canada. In some areas, boundary changes/geocoding changes may cause large changes.

6		Municipal Residential Taxes and Charges on a Representative House					
		Golden					
		House Value		Taxes & Charges			
Year	\$	% change	\$	% change			
2008	236,518		2,327				
2009	236,914	0.2	2,415	3.8			
2010	255,566	7.9	2,504	3.7			
2011	255,172	-0.2	2,719	8.6			
2012	252,188	-1.2	2,837	4.3			



Source: Ministry of Community, Sport & Cultural Development [http://www.cd.gov.bc.ca/lgd/infra/statistics\\_index.htm](http://www.cd.gov.bc.ca/lgd/infra/statistics_index.htm) (No RD level figures)

## Golden Town

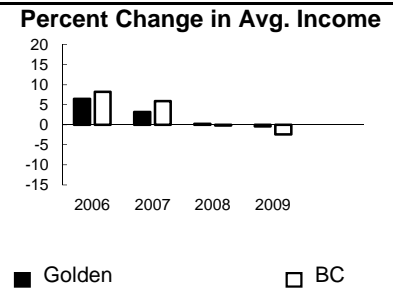
7	Values of Building Permits									
	Residential					Non-Residential		Total		Year
	Number of Units		Value \$'000			Value \$'000		Value \$'000		
Golden	BC	Golden	BC	Golden	BC	Golden	BC			
2007	12	40,932	3,588	8,611,723	1,360	3,932,968	4,948	12,544,691	2007	
2008	22	30,110	9,112	6,899,289	2,264	3,677,866	11,376	10,577,155	2008	
2009	17	18,607	4,960	4,491,075	2,589	3,138,810	7,549	7,629,885	2009	
2010	10	28,984	2,286	6,705,888	1,317	3,017,921	3,603	9,723,809	2010	
2011	9	25,745	1,727	6,113,406	5,713	3,136,361	7,440	9,249,767	2011	

Source: Statistics Canada

Note: Detailed non-residential permits data can be found on our Website: www.bcstats.gov.bc.ca

A dash can indicate a nil report, a value of less than \$500, or non-reporting. P indicates 'preliminary'.

8	Personal Taxation Statistics						Percent Change in Avg. Income	
	Total Income of All Returns							
	All Returns (number)		Average Income (\$)		% Change avg. income			
Year	Golden	BC	Golden	BC	Golden	BC		
2005	4,750	3,154,090	32,946	35,601	n/a	n/a		
2006	4,760	3,165,750	35,067	38,523	6.4	8.2		
2007	4,950	3,287,750	36,193	40,802	3.2	5.9		
2008	5,090	3,383,640	36,262	40,736	0.2	-0.2		
2009	5,010	3,406,860	36,125	39,754	-0.4	-2.4		



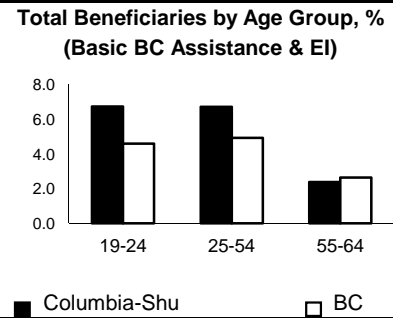
Taxation data available at: <http://www.bcstats.gov.bc.ca/data/dd/income.asp>

Source of Total Income 2009				% Distribution, Total Income					
	Golden		BC						
	\$Thousands	% of Total		% of Total					
Employment	127,595	70.5	63.7						
Pension	19,943	11.0	13.8						
Investment	10,987	6.1	9.8						
Self-Employed	7,882	4.4	5.3						
Other	11,309	6.2	5.3						
Tax Exempt	3,266	1.8	2.0						
Total	180,984	100.0	100.0						



Source: Canada Revenue Agency. Areas are defined by postal codes and may not match municipal boundaries.

9	Dependency on the Safety Net						Total Beneficiaries by Age Group, % (Basic BC Assistance & EI)		
	Percentage of Population by Age Receiving Benefits - September 2009								
	Age Group	BC Basic* Income Assistance Recipients (%)		Employment Insurance Beneficiaries (%)		Total of BC Basic Income Assistance & EI Beneficiaries (%)			
Columbia-Shu		BC	Columbia-Shu	BC	Columbia-Shu	BC			
Under 19	3.2	2.7							
19-24	2.6	2.1	4.3	2.6	6.7	4.6			
25-54	2.1	1.9	4.7	3.1	6.7	4.9			
55-64	0.5	0.7	1.9	2.0	2.4	2.6			
19-64	1.7	1.7	4.0	2.8	5.6	4.4			



\* On temporary assistance only. Excluded are those on Continuous Assistance, aboriginals living on reserve, seniors/OAS, & children living with relatives.

Source: BC Stats (using administrative files from the BC Ministry of Housing & Social Development, and Human Resources & Social Development Canada)

Note: EI Beneficiaries reports now include regular, fishing and employment benefits, work sharing and support measures. The reports exclude sickness, maternity and parental benefits.

10	Business Formations and Failures									
	Incorporations				Bankruptcies					
	Number		Year	Salmon Arm		Thompson/Okanagan DR		BC		
Golden	BC	Business		Consumer	Business	Consumer	Business	Consumer		
2007	52	34,036	2005	6	23	n.a.	n.a.	786	8,168	
2008	37	30,085	2006	6	21	120	913	585	7,020	
2009	41	26,431	2007	3	20	97	874	470	6,651	
2010	29	30,305	2008	7	29	92	1,014	454	7,293	
2011	25	30,844	2009	3	44	66	1,573	380	10,639	

Source: BC Ministry of Finance

Source: Office of the Superintendent of Bankruptcy, Government of Canada

Incorporations are counted in municipality of the registered office address which may differ from the actual business location.

Note: Bankruptcy is by urban postal code forward sortation area and is counted where it is filed.