

## Greenwood City

1	General
<p>Incorporated in 1897, Greenwood has a total land area of 2.52 square km (2006 Census). By highway the City is 43 km west of Grand Forks and 13 km northeast of Midway. Greenwood is in the Kootenay-Boundary Regional District.</p>	

2	Population Estimates				Age Distribution				
Annual Estimates					2011 Census			% Distribution, 2011 *	
Year	Greenwood	% Change Prev. Year	BC	% Change Prev. Year	Greenwood	Male	Female	Greenwood	BC
					All ages	360	350	100.0	100.0
					0 - 14	40	40	11.3	15.4
					15 - 24	20	20	5.6	12.6
					25 - 44	40	40	10.6	26.3
					45 - 64	140	160	41.5	30.0
					65 +	125	95	30.3	15.7

Source: Statistics Canada (as of July 1, includes estimate of Census undercount)

\* based on published totals, both sexes

2006 Census Profiles can be found on our Website at <http://www.bcstats.gov.bc.ca/census.asp>

3	Selected Census Characteristics					
Characteristics	Greenwood			British Columbia		
	2001	2006	% Change	% Change	2001	2006
Population	666	625	- 6.2	5.3	3,907,738	4,113,487
Population (by citizenship)	665	625	- 6.0	5.3	3,868,875	4,074,385
Non-immigrant	600	575	- 4.2	2.9	2,821,870	2,904,240
Immigrant	70	50	- 28.6	10.8	1,009,820	1,119,215
Labour force (15+ yrs.)	275	250	- 9.1	8.1	2,059,950	2,226,380
Employees	200	160	- 20.0	9.2	1,715,600	1,873,050
Self-employed	50	80	60.0	7.4	291,455	313,000
Participation rate [ppt.=percentage points]	50.0%	46.3%	-3.7 ppt.	0.4 ppt.	65.2%	65.6%
Unemployment rate	12.5%	8.0%	-4.5 ppt.	-2.5 ppt.	8.5%	6.0%
Total population 25 to 64 years	275	345	25.5	6.5	2,144,050	2,284,465
No certificate, diploma or degree	100	75	- 25.0	- 40.1	471,470	282,200
High school certificate or equivalent	55	130	136.4	27.7	462,925	591,275
Apprenticeship/trades certificate or diploma	55	55	-	- 7.4	295,180	273,450
College, CEGEP or other cert. or diploma	65	80	23.1	11.3	401,760	447,005
University certificate, diploma or degree	-	15	-	34.7	512,715	690,535
Bachelor's degree	-	-	-	23.0	282,800	347,715
Census families	215	195	- 9.3	6.9	1,086,030	1,161,420
Lone-parent families	40	35	- 12.5	4.0	168,420	175,165
Households	315	320	1.6	7.1	1,534,335	1,643,150
1-family households	215	190	- 11.6	6.1	1,012,925	1,074,850
Multi-family households	-	-	-	18.4	35,050	41,510
Non-family households	100	125	25.0	8.3	486,355	526,785
Median Income (2000 & 2005)	\$ 15,854	\$ 19,631	23.8	12.5	\$ 22,095	\$ 24,867
Males	\$ 22,534	\$ 20,101	- 10.8	9.0	\$ 28,976	\$ 31,598
Females	\$ 13,168	\$ 19,630	49.1	14.0	\$ 17,546	\$ 19,997
Median Family Income (2000 & 2005)	\$ 37,629	\$ 39,824	5.8	20.0	\$ 54,840	\$ 65,787
Economic Families	215	190	- 11.6	6.5	1,044,850	1,112,810
2001 Incidence, low income	-	12.8%	12.8 ppt.	-0.6 ppt.	13.9%	13.3%
2006 Prevalence, low income	-	12.8%	12.8 ppt.	-0.6 ppt.	13.9%	13.3%
Unattached persons, 15+	110	135	22.7	4.7	576,825	603,880
Incidence, low income	25.8%	22.2%	-3.6 ppt.	-1.4 ppt.	38.1%	36.7%
Population in private hh.	660	620	- 6.1	5.1	3,785,270	3,978,215
Incidence, low income	10.1%	13.7%	3.6 ppt.	-0.5 ppt.	17.8%	17.3%
Dwellings	315	320	1.6	7.1	1,534,335	1,643,150
Owned	265	285	7.5	12.5	1,017,485	1,145,045
Rented	50	35	- 30.0	- 3.6	512,360	493,995
Average gross rent	\$ 601	\$ 659	9.7	10.4	\$ 750	\$ 828
Average owners' payments	\$ 414	\$ 552	33.3	17.1	\$ 904	\$ 1,059
Avg. value, owned dwell.	\$ 81,370	\$ 110,541	35.8	81.5	\$ 230,645	\$ 418,703

Source: Statistics Canada. Notes: incomes are for 2005 and 2000; rent/owner's payments are restricted to non-farm, non-reserve private dwellings.

## Greenwood City

4		Labour Force by Industry (NAICS)					
		Greenwood			BC	% Distribution, 2006	
Industry		2001	2006	% Change	% change	Greenwood	BC
Total labour force		280	250	- 10.7	8.1	100.0	100.0
Industry - Not applicable		15	-	- 100.0	- 26.6	-	1.5
<b>All industries (Experienced LF)</b>		260	240	- 7.7	8.9	96.0	98.5
111-112 Farms		-	20	-	5.2	8.0	1.8
113 Forestry and logging		30	40	33.3	- 10.0	16.0	1.0
114 Fishing, hunting and trapping		-	-	-	1.3	-	0.2
1151/2 Support activities for farms		-	-	-	11.3	-	0.1
1153 Support activities for forestry		-	-	-	- 21.5	-	0.3
21 Mining and oil and gas extraction		10	-	- 100.0	42.6	-	0.9
22 Utilities		-	-	-	- 3.4	-	0.5
23 Construction		10	15	50.0	39.9	6.0	7.5
31-33 Manufacturing		60	35	- 41.7	- 2.7	14.0	8.5
311 Food manufacturing		-	-	-	3.6	-	1.0
321 Wood product manufacturing		50	25	- 50.0	- 16.1	10.0	1.7
322 Paper manufacturing		-	-	-	- 13.5	-	0.6
41 Wholesale trade		10	-	- 100.0	11.6	-	4.1
44-45 Retail trade		25	30	20.0	6.9	12.0	11.2
441 Motor vehicle and parts dealers		-	10	-	9.0	4.0	1.1
445 Food and beverage stores		-	-	-	8.4	-	2.9
448 Clothing & clothing accessories		-	-	-	9.2	-	1.1
452 General merchandise stores		-	-	-	6.5	-	1.2
48-49 Transportation & warehousing		10	-	- 100.0	0.6	-	5.2
51 Information and cultural industries		-	-	-	- 5.3	-	2.6
52 Finance and insurance		10	10	-	4.5	4.0	3.8
53 Real estate & rental/leasing		-	-	-	22.1	-	2.3
54 Prof'sonal, scientific & tech. serv.		10	10	-	18.6	4.0	7.3
55 Mgmt. of companies/ent'prises		-	-	-	126.6	-	0.1
56 Admin+support, waste mgmnt srv.		15	10	- 33.3	20.4	4.0	4.4
61 Educational services		10	15	50.0	9.2	6.0	6.9
62 Health care and social assistance		20	10	- 50.0	6.5	4.0	9.6
71 Arts, entertainment and recreation		10	-	- 100.0	11.3	-	2.3
72 Accommodation and food services		10	25	150.0	7.7	10.0	8.1
721 Accommodation services		10	-	- 100.0	2.5	-	1.7
722 Food services & drinking places		-	20	-	9.2	8.0	6.4
81 Other services (excl. public admin.)		10	10	-	11.8	4.0	4.9
91 Public administration		30	10	- 66.7	- 2.0	4.0	5.0
Special Aggregations	Agriculture, Food and Beverage	-	20	-	5.8	8.0	2.9
	Fishing and Fish Processing	-	-	-	- 3.3	-	0.5
	Logging and Forest Products	80	75	- 6.3	- 14.7	30.0	3.7
	Mining and Mineral Products	10	-	- 100.0	17.1	-	2.1

Source: Statistics Canada. Industry according to NAICS version used in each census. Unpublished data.

5		Business Locations- Number of Firms by Employment Size Range								
		Firms with no employees		Firms with employees		% change	Koot-Bound RD			
		Koot-Bound RD	BC	Koot-Bound R	BC	Koot-Bound RD	1 to 19	20 to 49	50-199	200 Plus
2008		1,030	185,879	1,092	175,003	-	968	83	33	8
2009		1,036	186,541	1,157	176,124	6.0	1,035	78	36	8
2010		1,083	194,349	1,192	175,913	3.0	1,070	77	39	6
2011		1,084	195,290	1,185	173,589	- 0.6	1,061	81	36	7

Source: Business Register, Statistics Canada. In some areas, boundary changes/geocoding changes may cause large changes.

6		Municipal Residential Taxes and Charges on a Representative House					
		Greenwood					
		House Value		Taxes & Charges			
Year	\$	% change	\$	% change			
2008	120,097		1,579				
2009	120,712	0.5	1,666	5.5			
2010	127,335	5.5	1,785	7.2			
2011	125,213	-1.7	1,850	3.6			
2012	117,303	-6.3	1,870	1.1			

Source: Ministry of Community, Sport & Cultural Development [http://www.cd.gov.bc.ca/lgd/infra/statistics\\_index.htm](http://www.cd.gov.bc.ca/lgd/infra/statistics_index.htm) (No RD level figures)

## Greenwood City

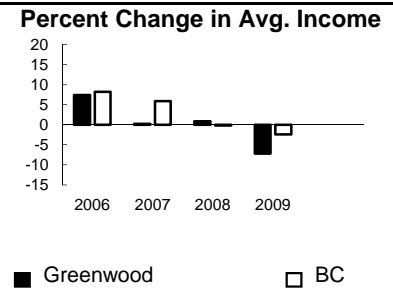
7	Values of Building Permits								
	Residential				Non-Residential		Total		Year
	Number of Units		Value \$'000		Value \$'000		Value \$'000		
Greenwood	BC	Greenwood	BC	Greenwood	BC	Greenwood	BC		
2007	4	40,932	1,006	8,611,723	64	3,932,968	1,070	12,544,691	2007
2008	5	30,110	913	6,899,289	-	3,677,866	913	10,577,155	2008
2009	1	18,607	444	4,491,075	6	3,138,810	450	7,629,885	2009
2010	1	28,984	251	6,705,888	63	3,017,921	314	9,723,809	2010
2011	-	25,745	96	6,113,406	4	3,136,361	100	9,249,767	2011

Source: Statistics Canada

Note: Detailed non-residential permits data can be found on our Website: www.bcstats.gov.bc.ca

A dash can indicate a nil report, a value of less than \$500, or non-reporting. P indicates 'preliminary'.

8	Personal Taxation Statistics					Percent Change in Avg. Income		
	Total Income of All Returns							
	All Returns (number)		Average Income (\$)		% Change avg. income			
Year	Greenwood	BC	Greenwood	BC	Greenwood	BC		
2005	730	3,154,090	24,633	35,601	n/a	n/a		
2006	720	3,165,750	26,458	38,523	7.4	8.2		
2007	770	3,287,750	26,523	40,802	0.2	5.9		
2008	790	3,383,640	26,752	40,736	0.9	-0.2		
2009	830	3,406,860	24,817	39,754	-7.2	-2.4		



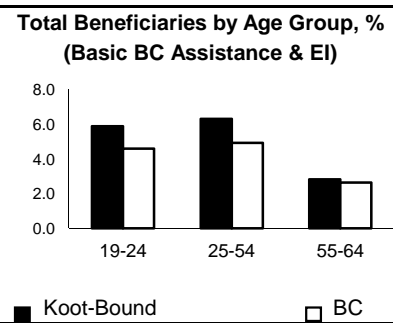
Taxation data available at: <http://www.bcstats.gov.bc.ca/data/dd/income.asp>

9	Source of Total Income 2009			% Distribution, Total Income					
	Greenwood		BC						
	\$Thousands	% of Total	% of Total						
Employment	8,657	42.0	63.7						
Pension	6,595	32.0	13.8						
Investment	1,474	7.2	9.8						
Self-Employed	456	2.2	5.3						
Other	2,107	10.2	5.3						
Tax Exempt	1,307	6.3	2.0						
Total	20,598	100.0	100.0						



Source: Canada Revenue Agency. Areas are defined by postal codes and may not match municipal boundaries.

9	Dependency on the Safety Net						Total Beneficiaries by Age Group, % (Basic BC Assistance & EI)		
	Percentage of Population by Age Receiving Benefits - September 2009								
	Age Group	BC Basic* Income Assistance Recipients (%)		Employment Insurance Beneficiaries (%)		Total of BC Basic Income Assistance & EI Beneficiaries (%)			
Koot-Bound		BC	Koot-Bound	BC	Koot-Bound	BC			
Under 19	3.0	2.7							
19-24	2.2	2.1	3.7	2.6	5.9	4.6			
25-54	2.5	1.9	3.9	3.1	6.3	4.9			
55-64	0.9	0.7	1.9	2.0	2.8	2.6			
19-64	2.0	1.7	3.3	2.8	5.3	4.4			



\* On temporary assistance only. Excluded are those on Continuous Assistance, aboriginals living on reserve, seniors/OAS, & children living with relatives.

Source: BC Stats (using administrative files from the BC Ministry of Housing & Social Development, and Human Resources & Social Development Canada)

Note: EI Beneficiaries reports now include regular, fishing and employment benefits, work sharing and support measures. The reports exclude sickness, maternity and parental benefits.

10	Business Formations and Failures								
	Incorporations			Bankruptcies					
	Number		Year	Trials		Kootenay DR		BC	
Greenwood	BC	Business		Consumer	Business	Consumer	Business	Consumer	
2007	3	34,036	2005	2	23	n.a.	n.a.	786	8,168
2008	-	30,085	2006	1	17	31	224	585	7,020
2009	-	26,431	2007	0	17	14	197	470	6,651
2010	1	30,305	2008	0	22	16	180	454	7,293
2011	3	30,844	2009	1	18	9	339	380	10,639

Source: BC Ministry of Finance

Source: Office of the Superintendent of Bankruptcy, Government of Canada

Incorporations are counted in municipality of the registered office address which may differ from the actual business location.

Note: Bankruptcy is by urban postal code forward sortation area and is counted where it is filed.