

## Kaslo Village

<b>1</b>	<b>General</b>
<p>Incorporated in 1893, Kaslo has a total land area of 2.8 square km (2006 Census). By highway the Village is 70 km north of Nelson and 47 km east of New Denver. Kaslo is in the Central Kootenay Regional District.</p>	

<b>2</b>	<b>Population Estimates</b>				<b>Age Distribution</b>				
<b>Annual Estimates</b>					<b>2011 Census</b>			<b>% Distribution, 2011 *</b>	
Year	Kaslo	% Change Prev. Year	BC	% Change Prev. Year	Kaslo	Male	Female	Kaslo	BC
2007	1,167	n/a	4,309,632	n/a	All ages	495	530	100.0	100.0
2008	1,170	0.3	4,384,047	1.7	0 - 14	75	75	14.6	15.4
2009	1,186	1.4	4,459,947	1.7	15 - 24	65	55	12.1	12.6
2010	1,183	-0.3	4,529,647	1.6	25 - 44	75	90	16.5	26.3
2011	1,184	0.1	4,573,321	1.0	45 - 64	180	195	35.9	30.0
					65 +	95	115	20.9	15.7

Source: Statistics Canada (as of July 1, includes estimate of Census undercount)

\* based on published totals, both sexes

**2006 Census Profiles can be found on our Website at <http://www.bcstats.gov.bc.ca/census.asp>**

<b>3</b>	<b>Selected Census Characteristics</b>						
			<b>Kaslo</b>			<b>British Columbia</b>	
Characteristics	2001	2006	% Change	% Change	2001	2006	
Population	1,032	1,072	3.9	5.3	3,907,738	4,113,487	
Population (by citizenship)	1,030	1,055	2.4	5.3	3,868,875	4,074,385	
Non-immigrant	895	915	2.2	2.9	2,821,870	2,904,240	
Immigrant	140	140	-	10.8	1,009,820	1,119,215	
Labour force (15+ yrs.)	495	475	- 4.0	8.1	2,059,950	2,226,380	
Employees	370	395	6.8	9.2	1,715,600	1,873,050	
Self-employed	115	65	- 43.5	7.4	291,455	313,000	
Participation rate [ppt.=percentage points]	58.8%	55.2%	-3.6 ppt.	0.4 ppt.	65.2%	65.6%	
Unemployment rate	12.0%	8.4%	-3.6 ppt.	-2.5 ppt.	8.5%	6.0%	
Total population 25 to 64 years	510	550	7.8	6.5	2,144,050	2,284,465	
No certificate, diploma or degree	160	75	- 53.1	- 40.1	471,470	282,200	
High school certificate or equivalent	125	175	40.0	27.7	462,925	591,275	
Apprenticeship/trades certificate or diploma	125	95	- 24.0	- 7.4	295,180	273,450	
College, CEGEP or other cert. or diploma	60	125	108.3	11.3	401,760	447,005	
University certificate, diploma or degree	45	80	77.8	34.7	512,715	690,535	
Bachelor's degree	30	65	116.7	23.0	282,800	347,715	
Census families	330	310	- 6.1	6.9	1,086,030	1,161,420	
Lone-parent families	90	60	- 33.3	4.0	168,420	175,165	
Households	460	480	4.3	7.1	1,534,335	1,643,150	
1-family households	325	305	- 6.2	6.1	1,012,925	1,074,850	
Multi-family households	-	10	-	18.4	35,050	41,510	
Non-family households	130	170	30.8	8.3	486,355	526,785	
Median Income (2000 & 2005)	\$ 18,005	\$ 21,596	19.9	12.5	\$ 22,095	\$ 24,867	
Males	\$ 16,509	\$ 24,145	46.3	9.0	\$ 28,976	\$ 31,598	
Females	\$ 18,923	\$ 17,355	- 8.3	14.0	\$ 17,546	\$ 19,997	
Median Family Income (2000 & 2005)	\$ 38,825	\$ 52,167	34.4	20.0	\$ 54,840	\$ 65,787	
Economic Families	330	315	- 4.5	6.5	1,044,850	1,112,810	
2001 Incidence, low income    2006 Prevalence, low income	9.8%	14.3%	4.5 ppt.	-0.6 ppt.	13.9%	13.3%	
Unattached persons, 15+	145	175	20.7	4.7	576,825	603,880	
Incidence, low income	57.9%	40.0%	-17.9 ppt.	-1.4 ppt.	38.1%	36.7%	
Population in private hh.	1,030	1,045	1.5	5.1	3,785,270	3,978,215	
Incidence, low income	16.2%	23.4%	7.2 ppt.	-0.5 ppt.	17.8%	17.3%	
Dwellings	455	480	5.5	7.1	1,534,335	1,643,150	
Owned	345	340	- 1.4	12.5	1,017,485	1,145,045	
Rented	115	145	26.1	- 3.6	512,360	493,995	
Average gross rent	\$ 476	\$ 548	15.1	10.4	\$ 750	\$ 828	
Average owners' payments	\$ 620	\$ 599	- 3.4	17.1	\$ 904	\$ 1,059	
Avg. value, owned dwell.	\$ 144,852	\$ 196,126	35.4	81.5	\$ 230,645	\$ 418,703	

Source: Statistics Canada. Notes: incomes are for 2005 and 2000; rent/owner's payments are restricted to non-farm, non-reserve private dwellings.

## Kaslo Village

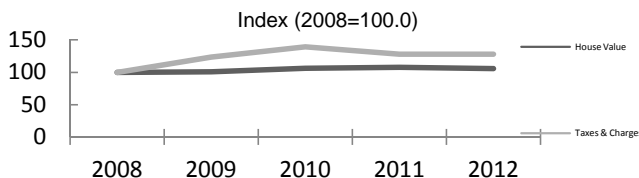
4		Labour Force by Industry (NAICS)					
		Kaslo			BC	% Distribution, 2006	
Industry		2001	2006	% Change	% change	Kaslo	BC
Total labour force		495	475	- 4.0	8.1	100.0	100.0
Industry - Not applicable		10	15	50.0	- 26.6	3.2	1.5
<b>All industries (Experienced LF)</b>		485	465	- 4.1	8.9	97.9	98.5
111-112 Farms		-	-	-	5.2	-	1.8
113 Forestry and logging		60	30	- 50.0	- 10.0	6.3	1.0
114 Fishing, hunting and trapping		-	-	-	1.3	-	0.2
1151/2 Support activities for farms		-	-	-	11.3	-	0.1
1153 Support activities for forestry		-	-	-	- 21.5	-	0.3
21 Mining and oil and gas extraction		-	-	-	42.6	-	0.9
22 Utilities		-	-	-	- 3.4	-	0.5
23 Construction		40	55	37.5	39.9	11.6	7.5
31-33 Manufacturing		25	75	200.0	- 2.7	15.8	8.5
311 Food manufacturing		10	-	- 100.0	3.6	-	1.0
321 Wood product manufacturing		15	50	233.3	- 16.1	10.5	1.7
322 Paper manufacturing		-	-	-	- 13.5	-	0.6
41 Wholesale trade		-	-	-	11.6	-	4.1
44-45 Retail trade		55	40	- 27.3	6.9	8.4	11.2
441 Motor vehicle and parts dealers		-	-	-	9.0	-	1.1
445 Food and beverage stores		10	20	100.0	8.4	4.2	2.9
448 Clothing & clothing accessories		-	-	-	9.2	-	1.1
452 General merchandise stores		-	-	-	6.5	-	1.2
48-49 Transportation & warehousing		25	20	- 20.0	0.6	4.2	5.2
51 Information and cultural industries		10	25	150.0	- 5.3	5.3	2.6
52 Finance and insurance		20	-	- 100.0	4.5	-	3.8
53 Real estate & rental/leasing		15	-	- 100.0	22.1	-	2.3
54 Prof'sonal, scientific & tech. serv.		20	15	- 25.0	18.6	3.2	7.3
55 Mgmt. of companies/ent'prises		-	-	-	126.6	-	0.1
56 Admin+support, waste mgmnt srv.		-	10	-	20.4	2.1	4.4
61 Educational services		-	15	-	9.2	3.2	6.9
62 Health care and social assistance		30	65	116.7	6.5	13.7	9.6
71 Arts, entertainment and recreation		10	15	50.0	11.3	3.2	2.3
72 Accommodation and food services		125	70	- 44.0	7.7	14.7	8.1
721 Accommodation services		60	40	- 33.3	2.5	8.4	1.7
722 Food services & drinking places		65	25	- 61.5	9.2	5.3	6.4
81 Other services (excl. public admin.)		25	-	- 100.0	11.8	-	4.9
91 Public administration		15	25	66.7	- 2.0	5.3	5.0
Special Aggregations	Agriculture, Food and Beverage	10	-	- 100.0	5.8	-	2.9
	Fishing and Fish Processing	-	-	-	- 3.3	-	0.5
	Logging and Forest Products	80	85	6.3	- 14.7	17.9	3.7
	Mining and Mineral Products	10	10	-	17.1	2.1	2.1

Source: Statistics Canada. Industry according to NAICS version used in each census. Unpublished data.

5		Business Locations- Number of Firms by Employment Size Range								
		Firms with no employees		Firms with employees		% change	C Kootenay RD			
		C Kootenay RD	BC	C Kootenay RI	BC	C Kootenay RD	1 to 19	20 to 49	50-199	200 Plus
2008		2,189	185,879	2,502	175,003	-	2,293	134	63	12
2009		2,138	186,541	2,367	176,124	- 5.4	2,170	123	61	13
2010		2,233	194,349	2,408	175,913	1.7	2,204	128	64	12
2011		2,164	195,290	2,381	173,589	- 1.1	2,194	119	58	10

Source: Business Register, Statistics Canada. In some areas, boundary changes/geocoding changes may cause large changes.

6		Municipal Residential Taxes and Charges on a Representative House					
		Kaslo					
		House Value		Taxes & Charges			
Year	\$	% change	\$	% change			
2008	196,996		1,868				
2009	198,425	0.7	2,307	23.5			
2010	208,991	5.3	2,600	12.7			
2011	212,445	1.7	2,387	-8.2			
2012	208,525	-1.8	2,385	-0.1			



Source: Ministry of Community, Sport & Cultural Development [http://www.cd.gov.bc.ca/lgd/infra/statistics\\_index.htm](http://www.cd.gov.bc.ca/lgd/infra/statistics_index.htm) (No RD level figures)

## Kaslo Village

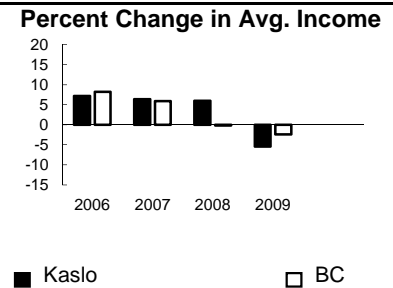
7	Values of Building Permits									
	Residential					Non-Residential		Total		Year
	Number of Units		Value \$'000			Value \$'000		Value \$'000		
Kaslo	BC	Kaslo	BC	Kaslo	BC	Kaslo	BC			
2007	6	40,932	1,461	8,611,723	1,940	3,932,968	3,401	12,544,691	2007	
2008	8	30,110	2,649	6,899,289	164	3,677,866	2,813	10,577,155	2008	
2009	7	18,607	1,865	4,491,075	189	3,138,810	2,054	7,629,885	2009	
2010	1	28,984	340	6,705,888	1,965	3,017,921	2,305	9,723,809	2010	
2011	-	25,745	551	6,113,406	136	3,136,361	687	9,249,767	2011	

Source: Statistics Canada

Note: Detailed non-residential permits data can be found on our Website: www.bcstats.gov.bc.ca

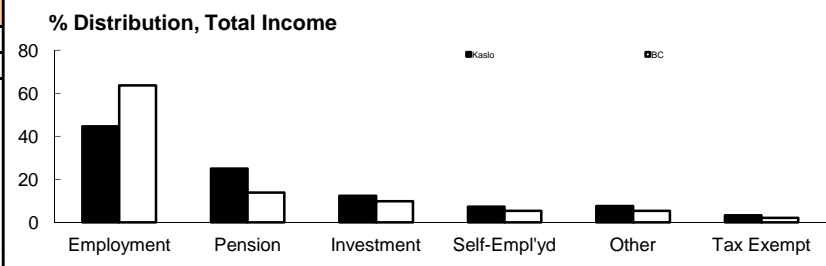
A dash can indicate a nil report, a value of less than \$500, or non-reporting. P indicates 'preliminary'.

8	Personal Taxation Statistics						Percent Change in Avg. Income	
	Total Income of All Returns							
	All Returns (number)		Average Income (\$)		% Change avg. income			
Year	Kaslo	BC	Kaslo	BC	Kaslo	BC		
2005	1,540	3,154,090	26,534	35,601	n/a	n/a		
2006	1,490	3,165,750	28,446	38,523	7.2	8.2		
2007	1,550	3,287,750	30,254	40,802	6.4	5.9		
2008	1,590	3,383,640	32,072	40,736	6.0	-0.2		
2009	1,580	3,406,860	30,330	39,754	-5.4	-2.4		



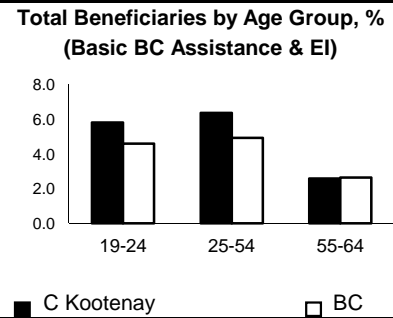
Taxation data available at: <http://www.bcstats.gov.bc.ca/data/dd/income.asp>

9	Source of Total Income 2009				% Distribution, Total Income					
	Kaslo		BC							
	\$Thousands	% of Total	% of Total							
Employment	21,378	44.6	63.7							
Pension	11,965	25.0	13.8							
Investment	5,933	12.4	9.8							
Self-Employed	3,458	7.2	5.3							
Other	3,656	7.6	5.3							
Tax Exempt	1,531	3.2	2.0							
Total	47,922	100.0	100.0							



Source: Canada Revenue Agency. Areas are defined by postal codes and may not match municipal boundaries.

9	Dependency on the Safety Net						Total Beneficiaries by Age Group, % (Basic BC Assistance & EI)		
	Percentage of Population by Age Receiving Benefits - September 2009								
	Age Group	BC Basic* Income Assistance Recipients (%)		Employment Insurance Beneficiaries (%)		Total of BC Basic Income Assistance & EI Beneficiaries (%)			
C Kootenay		BC	C Kootenay	BC	C Kootenay	BC			
Under 19	3.4	2.7							
19-24	2.3	2.1	3.6	2.6	5.8	4.6			
25-54	2.4	1.9	4.1	3.1	6.4	4.9			
55-64	0.6	0.7	2.0	2.0	2.6	2.6			
19-64	1.9	1.7	3.5	2.8	5.3	4.4			



\* On temporary assistance only. Excluded are those on Continuous Assistance, aboriginals living on reserve, seniors/OAS, & children living with relatives.

Source: BC Stats (using administrative files from the BC Ministry of Housing & Social Development, and Human Resources & Social Development Canada)

Note: EI Beneficiaries reports now include regular, fishing and employment benefits, work sharing and support measures. The reports exclude sickness, maternity and parental benefits.

10	Business Formations and Failures									
	Incorporations				Bankruptcies					
	Number				Nelson		Kootenay DR		BC	
Year	Kaslo	BC	Year	Business	Consumer	Business	Consumer	Business	Consumer	
2007	9	34,036	2005	5	19	n.a.	n.a.	786	8,168	
2008	2	30,085	2006	7	21	31	224	585	7,020	
2009	10	26,431	2007	3	16	14	197	470	6,651	
2010	7	30,305	2008	2	14	16	180	454	7,293	
2011	4	30,844	2009	0	39	9	339	380	10,639	

Source: BC Ministry of Finance

Source: Office of the Superintendent of Bankruptcy, Government of Canada

Incorporations are counted in municipality of the registered office address which may differ from the actual business location.

Note: Bankruptcy is by urban postal code forward sortation area and is counted where it is filed.