

## Montrose Village

1	General
<p>Incorporated in 1956, Montrose has a total land area of 1.53 square km (2006 Census). By highway the Village is 7 km east of Trail. Montrose is in the Kootenay-Boundary Regional District.</p>	

2					Population Estimates					Age Distribution				
Annual Estimates					2011 Census					% Distribution, 2011 *				
Year	Montrose	% Change Prev. Year	BC	% Change Prev. Year	Montrose	Male	Female	Montrose	BC	Montrose	BC	Montrose	BC	
2007	1,023	n/a	4,309,632	n/a	All ages	520	510	100.0	100.0					
2008	1,046	2.2	4,384,047	1.7	0 - 14	75	65	13.1	15.4					
2009	1,044	-0.2	4,459,947	1.7	15 - 24	70	65	12.6	12.6					
2010	1,046	0.2	4,529,647	1.6	25 - 44	80	90	16.0	26.3					
2011	1,047	0.1	4,573,321	1.0	45 - 64	200	195	38.8	30.0					
					65 +	95	90	18.4	15.7					

Source: Statistics Canada (as of July 1, includes estimate of Census undercount)

\* based on published totals, both sexes

**2006 Census Profiles can be found on our Website at <http://www.bcstats.gov.bc.ca/census.asp>**

3								Selected Census Characteristics							
								Montrose				British Columbia			
Characteristics								2001	2006	% Change	% Change	2001	2006		
Population								1,067	1,012	- 5.2	5.3	3,907,738	4,113,487		
Population (by citizenship)								1,065	1,010	- 5.2	5.3	3,868,875	4,074,385		
Non-immigrant								975	870	- 10.8	2.9	2,821,870	2,904,240		
Immigrant								90	145	61.1	10.8	1,009,820	1,119,215		
Labour force (15+ yrs.)								520	515	- 1.0	8.1	2,059,950	2,226,380		
Employees								485	500	3.1	9.2	1,715,600	1,873,050		
Self-employed								20	10	- 50.0	7.4	291,455	313,000		
Participation rate [ppt.=percentage points]								58.8%	57.9%	-0.9 ppt.	0.4 ppt.	65.2%	65.6%		
Unemployment rate								16.3%	4.9%	-11.4 ppt.	-2.5 ppt.	8.5%	6.0%		
Total population 25 to 64 years								550	535	- 2.7	6.5	2,144,050	2,284,465		
No certificate, diploma or degree								105	35	- 66.7	- 40.1	471,470	282,200		
High school certificate or equivalent								140	130	- 7.1	27.7	462,925	591,275		
Apprenticeship/trades certificate or diploma								145	105	- 27.6	- 7.4	295,180	273,450		
College, CEGEP or other cert. or diploma								95	145	52.6	11.3	401,760	447,005		
University certificate, diploma or degree								45	125	177.8	34.7	512,715	690,535		
Bachelor's degree								25	65	160.0	23.0	282,800	347,715		
Census families								340	315	- 7.4	6.9	1,086,030	1,161,420		
Lone-parent families								40	20	- 50.0	4.0	168,420	175,165		
Households								410	405	- 1.2	7.1	1,534,335	1,643,150		
1-family households								330	310	- 6.1	6.1	1,012,925	1,074,850		
Multi-family households								10	-	- 100.0	18.4	35,050	41,510		
Non-family households								70	95	35.7	8.3	486,355	526,785		
Median Income (2000 & 2005)								\$ 23,714	\$ 28,987	22.2	12.5	\$ 22,095	\$ 24,867		
Males								\$ 33,705	\$ 44,603	32.3	9.0	\$ 28,976	\$ 31,598		
Females								\$ 15,210	\$ 19,983	31.4	14.0	\$ 17,546	\$ 19,997		
Median Family Income (2000 & 2005)								\$ 56,467	\$ 72,937	29.2	20.0	\$ 54,840	\$ 65,787		
Economic Families								340	320	- 5.9	6.5	1,044,850	1,112,810		
2001 Incidence, low income 2006 Prevalence, low income								-	3.1%	3.1 ppt.	-0.6 ppt.	13.9%	13.3%		
Unattached persons, 15+								75	85	13.3	4.7	576,825	603,880		
Incidence, low income								-	11.8%	11.8 ppt.	-1.4 ppt.	38.1%	36.7%		
Population in private hh.								1,065	1,015	- 4.7	5.1	3,785,270	3,978,215		
Incidence, low income								1.9%	2.5%	0.6 ppt.	-0.5 ppt.	17.8%	17.3%		
Dwellings								410	405	- 1.2	7.1	1,534,335	1,643,150		
Owned								390	390	-	12.5	1,017,485	1,145,045		
Rented								20	15	- 25.0	- 3.6	512,360	493,995		
Average gross rent								\$ 589	\$ 688	16.8	10.4	\$ 750	\$ 828		
Average owners' payments								\$ 561	\$ 729	29.9	17.1	\$ 904	\$ 1,059		
Avg. value, owned dwell.								\$ 118,698	\$ 167,688	41.3	81.5	\$ 230,645	\$ 418,703		

Source: Statistics Canada. Notes: incomes are for 2005 and 2000; rent/owner's payments are restricted to non-farm, non-reserve private dwellings.

## Montrose Village

4		Labour Force by Industry (NAICS)					
		Montrose			BC	% Distribution, 2006	
Industry		2001	2006	% Change	% change	Montrose	BC
Total labour force		520	515	- 1.0	8.1	100.0	100.0
Industry - Not applicable		15	-	- 100.0	- 26.6	-	1.5
<b>All industries (Experienced LF)</b>		505	515	2.0	8.9	100.0	98.5
111-112 Farms		-	-	-	5.2	-	1.8
113 Forestry and logging		-	-	-	- 10.0	-	1.0
114 Fishing, hunting and trapping		-	-	-	1.3	-	0.2
1151/2 Support activities for farms		-	-	-	11.3	-	0.1
1153 Support activities for forestry		-	-	-	- 21.5	-	0.3
21 Mining and oil and gas extraction		20	20	-	42.6	3.9	0.9
22 Utilities		-	-	-	- 3.4	-	0.5
23 Construction		35	15	- 57.1	39.9	2.9	7.5
31-33 Manufacturing		150	80	- 46.7	- 2.7	15.5	8.5
311 Food manufacturing		-	-	-	3.6	-	1.0
321 Wood product manufacturing		-	10	-	- 16.1	1.9	1.7
322 Paper manufacturing		10	-	- 100.0	- 13.5	-	0.6
41 Wholesale trade		-	-	-	11.6	-	4.1
44-45 Retail trade		95	65	- 31.6	6.9	12.6	11.2
441 Motor vehicle and parts dealers		30	20	- 33.3	9.0	3.9	1.1
445 Food and beverage stores		25	10	- 60.0	8.4	1.9	2.9
448 Clothing & clothing accessories		10	-	- 100.0	9.2	-	1.1
452 General merchandise stores		10	10	-	6.5	1.9	1.2
48-49 Transportation & warehousing		-	15	-	0.6	2.9	5.2
51 Information and cultural industries		10	-	- 100.0	- 5.3	-	2.6
52 Finance and insurance		-	30	-	4.5	5.8	3.8
53 Real estate & rental/leasing		-	15	-	22.1	2.9	2.3
54 Prof'sonal, scientific & tech. serv.		10	10	-	18.6	1.9	7.3
55 Mgmt. of companies/ent'prises		-	-	-	126.6	-	0.1
56 Admin+support, waste mgmnt srv.		10	10	-	20.4	1.9	4.4
61 Educational services		25	45	80.0	9.2	8.7	6.9
62 Health care and social assistance		85	80	- 5.9	6.5	15.5	9.6
71 Arts, entertainment and recreation		-	-	-	11.3	-	2.3
72 Accommodation and food services		25	50	100.0	7.7	9.7	8.1
721 Accommodation services		10	-	- 100.0	2.5	-	1.7
722 Food services & drinking places		20	50	150.0	9.2	9.7	6.4
81 Other services (excl. public admin.)		10	20	100.0	11.8	3.9	4.9
91 Public administration		-	60	-	- 2.0	11.7	5.0
Special Aggregations	Agriculture, Food and Beverage	-	-	-	5.8	-	2.9
	Fishing and Fish Processing	-	-	-	- 3.3	-	0.5
	Logging and Forest Products	15	10	- 33.3	- 14.7	1.9	3.7
	Mining and Mineral Products	145	75	- 48.3	17.1	14.6	2.1

Source: Statistics Canada. Industry according to NAICS version used in each census. Unpublished data.

5		Business Locations- Number of Firms by Employment Size Range								
		Firms with no employees		Firms with employees		% change	Koot-Bound RD			
		Koot-Bound RD	BC	Koot-Bound R	BC	Koot-Bound RD	1 to 19	20 to 49	50-199	200 Plus
2008		1,030	185,879	1,092	175,003	-	968	83	33	8
2009		1,036	186,541	1,157	176,124	6.0	1,035	78	36	8
2010		1,083	194,349	1,192	175,913	3.0	1,070	77	39	6
2011		1,084	195,290	1,185	173,589	- 0.6	1,061	81	36	7

Source: Business Register, Statistics Canada. In some areas, boundary changes/geocoding changes may cause large changes.

6		Municipal Residential Taxes and Charges on a Representative House					
		Montrose					
		House Value		Taxes & Charges			
Year		\$	% change	\$	% change		
2008		214,298		2,666			
2009		216,838	1.2	2,854	7.0		
2010		229,115	5.7	2,978	4.3		
2011		228,805	-0.1	3,056	2.6		
2012		232,094	1.4	3,087	1.0		

Year	House Value	Taxes & Charges
2008	100	100
2009	101.2	107.0
2010	105.7	104.3
2011	104.8	102.6
2012	106.4	101.0

Source: Ministry of Community, Sport & Cultural Development [http://www.cd.gov.bc.ca/lgd/infra/statistics\\_index.htm](http://www.cd.gov.bc.ca/lgd/infra/statistics_index.htm) (No RD level figures)

## Montrose Village

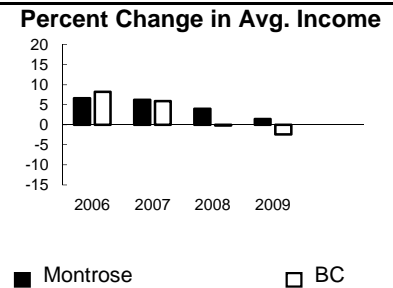
7	Values of Building Permits									Year
	Residential				Non-Residential		Total			
	Number of Units		Value \$'000		Value \$'000		Value \$'000			
Year	Montrose	BC	Montrose	BC	Montrose	BC	Montrose	BC	Year	
2007	10	40,932	1,830	8,611,723	15	3,932,968	1,845	12,544,691	2007	
2008	2	30,110	879	6,899,289	-	3,677,866	879	10,577,155	2008	
2009	2	18,607	525	4,491,075	-	3,138,810	525	7,629,885	2009	
2010	-	28,984	248	6,705,888	-	3,017,921	248	9,723,809	2010	
2011	-	25,745	206	6,113,406	-	3,136,361	206	9,249,767	2011	

Source: Statistics Canada

Note: Detailed non-residential permits data can be found on our Website: www.bcstats.gov.bc.ca

A dash can indicate a nil report, a value of less than \$500, or non-reporting. P indicates 'preliminary'.

8	Personal Taxation Statistics					Percent Change in Avg. Income	
	Total Income of All Returns						
Year	All Returns (number)		Average Income (\$)		% Change avg. income		
	Montrose	BC	Montrose	BC	Montrose	BC	
2005	950	3,154,090	37,144	35,601	n/a	n/a	
2006	1,040	3,165,750	39,610	38,523	6.6	8.2	
2007	1,000	3,287,750	42,066	40,802	6.2	5.9	
2008	1,010	3,383,640	43,744	40,736	4.0	-0.2	
2009	1,010	3,406,860	44,362	39,754	1.4	-2.4	



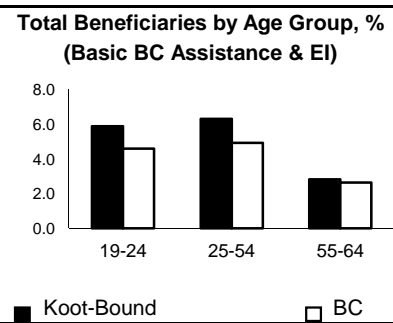
Taxation data available at: <http://www.bcstats.gov.bc.ca/data/dd/income.asp>

9	Source of Total Income 2009			% Distribution, Total Income					
	Montrose		BC						
	\$Thousands	% of Total	% of Total						
Employment	29,603	66.1	63.7						
Pension	7,788	17.4	13.8						
Investment	3,608	8.1	9.8						
Self-Employed	655	1.5	5.3						
Other	2,672	6.0	5.3						
Tax Exempt	479	1.1	2.0						
Total	44,806	100.0	100.0						



Source: Canada Revenue Agency. Areas are defined by postal codes and may not match municipal boundaries.

9	Dependency on the Safety Net						Total Beneficiaries by Age Group, % (Basic BC Assistance & EI)		
	Percentage of Population by Age Receiving Benefits - September 2009								
Age Group	BC Basic* Income Assistance Recipients (%)		Employment Insurance Beneficiaries (%)		Total of BC Basic Income Assistance & EI Beneficiaries (%)				
	Koot-Bound	BC	Koot-Bound	BC	Koot-Bound	BC			
							Koot-Bound	BC	
Under 19	3.0	2.7							
19-24	2.2	2.1	3.7	2.6	5.9	4.6			
25-54	2.5	1.9	3.9	3.1	6.3	4.9			
55-64	0.9	0.7	1.9	2.0	2.8	2.6			
19-64	2.0	1.7	3.3	2.8	5.3	4.4			



\* On temporary assistance only. Excluded are those on Continuous Assistance, aboriginals living on reserve, seniors/OAS, & children living with relatives.

Source: BC Stats (using administrative files from the BC Ministry of Housing & Social Development, and Human Resources & Social Development Canada)

Note: EI Beneficiaries reports now include regular, fishing and employment benefits, work sharing and support measures. The reports exclude sickness, maternity and parental benefits.

10	Business Formations and Failures								
	Incorporations			Bankruptcies					
Year	Number		Year	Trials		Kootenay DR		BC	
	Montrose	BC		Business	Consumer	Business	Consumer	Business	Consumer
2007	-	34,036	2005	2	23	n.a.	n.a.	786	8,168
2008	1	30,085	2006	1	17	31	224	585	7,020
2009	1	26,431	2007	0	17	14	197	470	6,651
2010	3	30,305	2008	0	22	16	180	454	7,293
2011	0	30,844	2009	1	18	9	339	380	10,639

Source: BC Ministry of Finance

Source: Office of the Superintendent of Bankruptcy, Government of Canada

Incorporations are counted in municipality of the registered office address which may differ from the actual business location.

Note: Bankruptcy is by urban postal code forward sortation area and is counted where it is filed.