

Salmo Village

1	General
<p>Incorporated in 1946, Salmo has a total land area of 2.38 square km (2006 Census). By highway the Village is 40 km south of Nelson, 41 km east of Trail, and 39 km southeast of Castlegar. Salmo is in the Central Kootenay Regional District.</p>	

2	Population Estimates				Age Distribution				
Annual Estimates					2011 Census			% Distribution, 2011 *	
Year	Salmo	% Change Prev. Year	BC	% Change Prev. Year	Salmo	Male	Female	Salmo	BC
2007	1,027	n/a	4,309,632	n/a	All ages	560	580	100.0	100.0
2008	1,048	2.0	4,384,047	1.7	0 - 14	100	95	16.7	15.4
2009	1,061	1.2	4,459,947	1.7	15 - 24	35	60	8.4	12.6
2010	1,070	0.8	4,529,647	1.6	25 - 44	135	135	23.3	26.3
2011	1,073	0.3	4,573,321	1.0	45 - 64	185	180	32.2	30.0
					65 +	105	120	19.8	15.7

Source: Statistics Canada (as of July 1, includes estimate of Census undercount)

* based on published totals, both sexes

2006 Census Profiles can be found on our Website at <http://www.bcstats.gov.bc.ca/census.asp>

3	Selected Census Characteristics						
			Salmo			British Columbia	
Characteristics	2001	2006	% Change	% Change	2001	2006	
Population	1,120	1,007	- 10.1	5.3	3,907,738	4,113,487	
Population (by citizenship)	1,120	1,010	- 9.8	5.3	3,868,875	4,074,385	
Non-immigrant	1,040	910	- 12.5	2.9	2,821,870	2,904,240	
Immigrant	80	60	- 25.0	10.8	1,009,820	1,119,215	
Labour force (15+ yrs.)	485	405	- 16.5	8.1	2,059,950	2,226,380	
Employees	375	355	- 5.3	9.2	1,715,600	1,873,050	
Self-employed	95	40	- 57.9	7.4	291,455	313,000	
Participation rate [ppt.=percentage points]	55.7%	48.5%	-7.2 ppt.	0.4 ppt.	65.2%	65.6%	
Unemployment rate	14.4%	15.0%	0.6 ppt.	-2.5 ppt.	8.5%	6.0%	
Total population 25 to 64 years	560	565	0.9	6.5	2,144,050	2,284,465	
No certificate, diploma or degree	235	140	- 40.4	- 40.1	471,470	282,200	
High school certificate or equivalent	100	180	80.0	27.7	462,925	591,275	
Apprenticeship/trades certificate or diploma	90	70	- 22.2	- 7.4	295,180	273,450	
College, CEGEP or other cert. or diploma	90	115	27.8	11.3	401,760	447,005	
University certificate, diploma or degree	35	55	57.1	34.7	512,715	690,535	
Bachelor's degree	10	15	50.0	23.0	282,800	347,715	
Census families	315	325	3.2	6.9	1,086,030	1,161,420	
Lone-parent families	55	60	9.1	4.0	168,420	175,165	
Households	480	460	- 4.2	7.1	1,534,335	1,643,150	
1-family households	320	325	1.6	6.1	1,012,925	1,074,850	
Multi-family households	-	-	-	18.4	35,050	41,510	
Non-family households	165	135	- 18.2	8.3	486,355	526,785	
Median Income (2000 & 2005)	\$ 20,271	\$ 18,177	- 10.3	12.5	\$ 22,095	\$ 24,867	
Males	\$ 25,029	\$ 26,947	7.7	9.0	\$ 28,976	\$ 31,598	
Females	\$ 16,354	\$ 15,232	- 6.9	14.0	\$ 17,546	\$ 19,997	
Median Family Income (2000 & 2005)	\$ 39,397	\$ 39,080	- 0.8	20.0	\$ 54,840	\$ 65,787	
Economic Families	320	325	1.6	6.5	1,044,850	1,112,810	
2001 Incidence, low income 2006 Prevalence, low income	12.6%	15.4%	2.8 ppt.	-0.6 ppt.	13.9%	13.3%	
Unattached persons, 15+	190	135	- 28.9	4.7	576,825	603,880	
Incidence, low income	53.4%	25.9%	-27.5 ppt.	-1.4 ppt.	38.1%	36.7%	
Population in private hh.	1,115	1,005	- 9.9	5.1	3,785,270	3,978,215	
Incidence, low income	19.4%	14.9%	-4.5 ppt.	-0.5 ppt.	17.8%	17.3%	
Dwellings	480	460	- 4.2	7.1	1,534,335	1,643,150	
Owned	345	370	7.2	12.5	1,017,485	1,145,045	
Rented	140	85	- 39.3	- 3.6	512,360	493,995	
Average gross rent	\$ 583	\$ 580	- 0.5	10.4	\$ 750	\$ 828	
Average owners' payments	\$ 638	\$ 645	1.1	17.1	\$ 904	\$ 1,059	
Avg. value, owned dwell.	\$ 106,927	\$ 118,584	10.9	81.5	\$ 230,645	\$ 418,703	

Source: Statistics Canada. Notes: incomes are for 2005 and 2000; rent/owner's payments are restricted to non-farm, non-reserve private dwellings.

Salmo Village

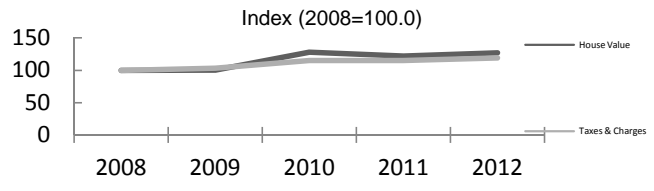
4		Labour Force by Industry (NAICS)					
		Salmo			BC	% Distribution, 2006	
Industry		2001	2006	% Change	% change	Salmo	BC
Total labour force		485	405	- 16.5	8.1	100.0	100.0
Industry - Not applicable		-	-	-	- 26.6	-	1.5
All industries (Experienced LF)		480	400	- 16.7	8.9	98.8	98.5
111-112 Farms		10	10	-	5.2	2.5	1.8
113 Forestry and logging		25	20	- 20.0	- 10.0	4.9	1.0
114 Fishing, hunting and trapping		-	10	-	1.3	2.5	0.2
1151/2 Support activities for farms		-	-	-	11.3	-	0.1
1153 Support activities for forestry		-	10	-	- 21.5	2.5	0.3
21 Mining and oil and gas extraction		-	-	-	42.6	-	0.9
22 Utilities		10	-	- 100.0	- 3.4	-	0.5
23 Construction		25	60	140.0	39.9	14.8	7.5
31-33 Manufacturing		85	45	- 47.1	- 2.7	11.1	8.5
311 Food manufacturing		-	-	-	3.6	-	1.0
321 Wood product manufacturing		60	30	- 50.0	- 16.1	7.4	1.7
322 Paper manufacturing		-	-	-	- 13.5	-	0.6
41 Wholesale trade		15	15	-	11.6	3.7	4.1
44-45 Retail trade		45	30	- 33.3	6.9	7.4	11.2
441 Motor vehicle and parts dealers		-	-	-	9.0	-	1.1
445 Food and beverage stores		15	10	- 33.3	8.4	2.5	2.9
448 Clothing & clothing accessories		-	-	-	9.2	-	1.1
452 General merchandise stores		-	-	-	6.5	-	1.2
48-49 Transportation & warehousing		40	10	- 75.0	0.6	2.5	5.2
51 Information and cultural industries		-	10	-	- 5.3	2.5	2.6
52 Finance and insurance		20	20	-	4.5	4.9	3.8
53 Real estate & rental/leasing		10	-	- 100.0	22.1	-	2.3
54 Prof'sonal, scientific & tech. serv.		30	15	- 50.0	18.6	3.7	7.3
55 Mgmt. of companies/ent'prises		-	-	-	126.6	-	0.1
56 Admin+support, waste mgmnt srv.		20	-	- 100.0	20.4	-	4.4
61 Educational services		20	20	-	9.2	4.9	6.9
62 Health care and social assistance		45	30	- 33.3	6.5	7.4	9.6
71 Arts, entertainment and recreation		15	20	33.3	11.3	4.9	2.3
72 Accommodation and food services		40	30	- 25.0	7.7	7.4	8.1
721 Accommodation services		25	25	-	2.5	6.2	1.7
722 Food services & drinking places		15	10	- 33.3	9.2	2.5	6.4
81 Other services (excl. public admin.)		10	40	300.0	11.8	9.9	4.9
91 Public administration		15	-	- 100.0	- 2.0	-	5.0
Special Aggregations	Agriculture, Food and Beverage	-	-	-	5.8	-	2.9
	Fishing and Fish Processing	-	10	-	- 3.3	2.5	0.5
	Logging and Forest Products	80	65	- 18.8	- 14.7	16.0	3.7
	Mining and Mineral Products	30	15	- 50.0	17.1	3.7	2.1

Source: Statistics Canada. Industry according to NAICS version used in each census. Unpublished data.

5		Business Locations- Number of Firms by Employment Size Range								
		Firms with no employees		Firms with employees		% change		C Kootenay RD		
		C Kootenay RD	BC	C Kootenay RI	BC	C Kootenay RD	1 to 19	20 to 49	50-199	200 Plus
2008		2,189	185,879	2,502	175,003	-	2,293	134	63	12
2009		2,138	186,541	2,367	176,124	- 5.4	2,170	123	61	13
2010		2,233	194,349	2,408	175,913	1.7	2,204	128	64	12
2011		2,164	195,290	2,381	173,589	- 1.1	2,194	119	58	10

Source: Business Register, Statistics Canada. In some areas, boundary changes/geocoding changes may cause large changes.

6		Municipal Residential Taxes and Charges on a Representative House					
		Salmo					
		House Value		Taxes & Charges			
Year		\$	% change	\$	% change		
2008		130,496		1,773			
2009		130,605	0.1	1,827	3.1		
2010		166,968	27.8	2,038	11.6		
2011		159,145	-4.7	2,043	0.2		
2012		165,680	4.1	2,112	3.4		



Source: Ministry of Community, Sport & Cultural Development http://www.cd.gov.bc.ca/lgd/infra/statistics_index.htm (No RD level figures)

Salmo Village

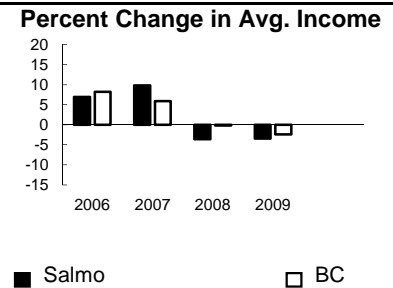
7	Values of Building Permits										Year
	Residential				Non-Residential			Total			
	Number of Units		Value \$'000		Value \$'000			Value \$'000			
Year	Salmo	BC	Salmo	BC	Salmo	BC	Salmo	BC	Salmo	BC	
2007	4	40,932	877	8,611,723	26	3,932,968	903	12,544,691	2007		
2008	3	30,110	509	6,899,289	-	3,677,866	509	10,577,155	2008		
2009	3	18,607	480	4,491,075	1,181	3,138,810	1,661	7,629,885	2009		
2010	2	28,984	561	6,705,888	-	3,017,921	561	9,723,809	2010		
2011	4	25,745	473	6,113,406	-	3,136,361	473	9,249,767	2011		

Source: Statistics Canada

Note: Detailed non-residential permits data can be found on our Website: www.bcstats.gov.bc.ca

A dash can indicate a nil report, a value of less than \$500, or non-reporting. P indicates 'preliminary'.

8	Personal Taxation Statistics						Percent Change in Avg. Income	
	Total Income of All Returns							
Year	All Returns (number)		Average Income (\$)		% Change avg. income		Salmo	BC
	Salmo	BC	Salmo	BC	Salmo	BC		
2005	1,480	3,154,090	25,772	35,601	n/a	n/a		
2006	1,510	3,165,750	27,552	38,523	6.9	8.2		
2007	1,550	3,287,750	30,252	40,802	9.8	5.9		
2008	1,550	3,383,640	29,163	40,736	-3.6	-0.2		
2009	1,560	3,406,860	28,164	39,754	-3.4	-2.4		

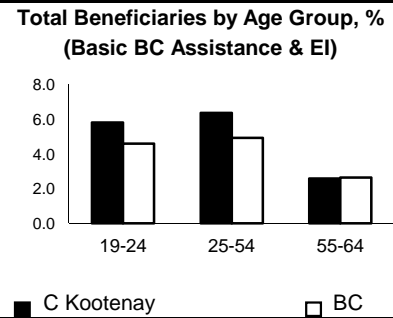


Taxation data available at: <http://www.bcstats.gov.bc.ca/data/dd/income.asp>

Source of Total Income 2009	Salmo		BC	% Distribution, Total Income					
	\$Thousands	% of Total	% of Total						
				Salmo	BC	Salmo	BC	Salmo	BC
Employment	26,603	60.5	63.7	60	65				
Pension	7,498	17.1	13.8	18	15				
Investment	1,761	4.0	9.8	5	10				
Self-Employed	2,285	5.2	5.3	5	5				
Other	3,007	6.8	5.3	5	5				
Tax Exempt	2,781	6.3	2.0	5	2				
Total	43,936	100.0	100.0						

Source: Canada Revenue Agency. Areas are defined by postal codes and may not match municipal boundaries.

9	Dependency on the Safety Net						Total Beneficiaries by Age Group, % (Basic BC Assistance & EI)		
	Percentage of Population by Age Receiving Benefits - September 2009								
Age Group	BC Basic* Income Assistance Recipients (%)		Employment Insurance Beneficiaries (%)		Total of BC Basic Income Assistance & EI Beneficiaries (%)		C Kootenay	BC	
	C Kootenay	BC	C Kootenay	BC	C Kootenay	BC			
	Under 19	3.4	2.7						
19-24	2.3	2.1	3.6	2.6	5.8	4.6	6.0	4.5	
25-54	2.4	1.9	4.1	3.1	6.4	4.9	6.5	4.8	
55-64	0.6	0.7	2.0	2.0	2.6	2.6	2.5	2.5	
19-64	1.9	1.7	3.5	2.8	5.3	4.4	2.5	2.5	



* On temporary assistance only. Excluded are those on Continuous Assistance, aboriginals living on reserve, seniors/OAS, & children living with relatives.

Source: BC Stats (using administrative files from the BC Ministry of Housing & Social Development, and Human Resources & Social Development Canada)

Note: EI Beneficiaries reports now include regular, fishing and employment benefits, work sharing and support measures. The reports exclude sickness, maternity and parental benefits.

10	Business Formations and Failures									
	Incorporations				Bankruptcies					
	Number				Nelson		Kootenay DR		BC	
Year	Salmo	BC	Year	Business	Consumer	Business	Consumer	Business	Consumer	
2007	2	34,036	2005	5	19	n.a.	n.a.	786	8,168	
2008	2	30,085	2006	7	21	31	224	585	7,020	
2009	1	26,431	2007	3	16	14	197	470	6,651	
2010	1	30,305	2008	2	14	16	180	454	7,293	
2011	2	30,844	2009	0	39	9	339	380	10,639	

Source: BC Ministry of Finance

Source: Office of the Superintendent of Bankruptcy, Government of Canada

Incorporations are counted in municipality of the registered office address which may differ from the actual business location.

Note: Bankruptcy is by urban postal code forward sortation area and is counted where it is filed.