

Silverton Village

1	General
<p>Incorporated in 1930, Silverton has a total land area of 0.44 square km (2006 Census). By highway the Village is 5 km south of New Denver and 27 km north of Slokan. Silverton is in the Central Kootenay Regional District.</p>	

2	Population Estimates				Age Distribution				
Annual Estimates					2011 Census			% Distribution, 2011 *	
Year	Silverton	% Change Prev. Year	BC	% Change Prev. Year	Silverton	Male	Female	Silverton	BC
					All ages	95	100	100.0	100.0
2007	192	n/a	4,309,632	n/a	0 - 14	10	10	7.5	15.4
2008	198	3.1	4,384,047	1.7	15 - 24	5	10	5.0	12.6
2009	202	2.0	4,459,947	1.7	25 - 44	10	10	10.0	26.3
2010	205	1.5	4,529,647	1.6	45 - 64	55	50	50.0	30.0
2011	203	-1.0	4,573,321	1.0	65 +	25	15	22.5	15.7

Source: Statistics Canada (as of July 1, includes estimate of Census undercount)

* based on published totals, both sexes

2006 Census Profiles can be found on our Website at <http://www.bcstats.gov.bc.ca/census.asp>

3	Selected Census Characteristics					
Characteristics	Silverton			British Columbia		
	2001	2006	% Change	% Change	2001	2006
Population	222	185	- 16.7	5.3	3,907,738	4,113,487
Population (by citizenship)	255	175	- 31.4	5.3	3,868,875	4,074,385
Non-immigrant	230	160	- 30.4	2.9	2,821,870	2,904,240
Immigrant	25	20	- 20.0	10.8	1,009,820	1,119,215
Labour force (15+ yrs.)	125	60	- 52.0	8.1	2,059,950	2,226,380
Employees	100	45	- 55.0	9.2	1,715,600	1,873,050
Self-employed	25	10	- 60.0	7.4	291,455	313,000
Participation rate [ppt.=percentage points]	65.0%	39.4%	-25.6 ppt.	0.4 ppt.	65.2%	65.6%
Unemployment rate	19.2%	-	-19.2 ppt.	-2.5 ppt.	8.5%	6.0%
Total population 25 to 64 years	110	90	- 18.2	6.5	2,144,050	2,284,465
No certificate, diploma or degree	50	10	- 80.0	- 40.1	471,470	282,200
High school certificate or equivalent	20	40	100.0	27.7	462,925	591,275
Apprenticeship/trades certificate or diploma	10	15	50.0	- 7.4	295,180	273,450
College, CEGEP or other cert. or diploma	30	10	- 66.7	11.3	401,760	447,005
University certificate, diploma or degree	10	20	100.0	34.7	512,715	690,535
Bachelor's degree	-	15	-	23.0	282,800	347,715
Census families	60	65	8.3	6.9	1,086,030	1,161,420
Lone-parent families	15	-	- 100.0	4.0	168,420	175,165
Households	115	105	- 8.7	7.1	1,534,335	1,643,150
1-family households	55	65	18.2	6.1	1,012,925	1,074,850
Multi-family households	-	-	-	18.4	35,050	41,510
Non-family households	60	35	- 41.7	8.3	486,355	526,785
Median Income (2000 & 2005)	\$ -	\$ -	-	12.5	\$ 22,095	\$ 24,867
Males	\$ -	\$ -	-	9.0	\$ 28,976	\$ 31,598
Females	\$ -	\$ -	-	14.0	\$ 17,546	\$ 19,997
Median Family Income (2000 & 2005)	\$ -	\$ -	-	20.0	\$ 54,840	\$ 65,787
Economic Families	-	-	-	6.5	1,044,850	1,112,810
2001 Incidence, low income 2006 Prevalence, low income	-	-	0.0 ppt.	-0.6 ppt.	13.9%	13.3%
Unattached persons, 15+	-	-	-	4.7	576,825	603,880
Incidence, low income	-	-	0.0 ppt.	-1.4 ppt.	38.1%	36.7%
Population in private hh.	-	-	-	5.1	3,785,270	3,978,215
Incidence, low income	-	-	0.0 ppt.	-0.5 ppt.	17.8%	17.3%
Dwellings	115	100	- 13.0	7.1	1,534,335	1,643,150
Owned	80	75	- 6.3	12.5	1,017,485	1,145,045
Rented	35	25	- 28.6	- 3.6	512,360	493,995
Average gross rent	\$ -	\$ 379	-	10.4	\$ 750	\$ 828
Average owners' payments	\$ -	\$ 436	-	17.1	\$ 904	\$ 1,059
Avg. value, owned dwell.	\$ 85,264	\$ 239,531	180.9	81.5	\$ 230,645	\$ 418,703

Source: Statistics Canada. Notes: incomes are for 2005 and 2000; rent/owner's payments are restricted to non-farm, non-reserve private dwellings.

Silverton Village

4		Labour Force by Industry (NAICS)					
		Silverton			BC	% Distribution, 2006	
Industry		2001	2006	% Change	% change	Silverton	BC
Total labour force		130	60	- 53.8	8.1	100.0	100.0
Industry - Not applicable		-	-	-	- 26.6	-	1.5
All industries (Experienced LF)		125	60	- 52.0	8.9	100.0	98.5
111-112 Farms		-	-	-	5.2	-	1.8
113 Forestry and logging		25	-	- 100.0	- 10.0	-	1.0
114 Fishing, hunting and trapping		-	-	-	1.3	-	0.2
1151/2 Support activities for farms		-	-	-	11.3	-	0.1
1153 Support activities for forestry		-	-	-	- 21.5	-	0.3
21 Mining and oil and gas extraction		15	-	- 100.0	42.6	-	0.9
22 Utilities		-	-	-	- 3.4	-	0.5
23 Construction		10	10	-	39.9	16.7	7.5
31-33 Manufacturing		-	10	-	- 2.7	16.7	8.5
311 Food manufacturing		-	-	-	3.6	-	1.0
321 Wood product manufacturing		-	10	-	- 16.1	16.7	1.7
322 Paper manufacturing		-	-	-	- 13.5	-	0.6
41 Wholesale trade		10	-	- 100.0	11.6	-	4.1
44-45 Retail trade		-	10	-	6.9	16.7	11.2
441 Motor vehicle and parts dealers		-	-	-	9.0	-	1.1
445 Food and beverage stores		-	-	-	8.4	-	2.9
448 Clothing & clothing accessories		-	-	-	9.2	-	1.1
452 General merchandise stores		-	-	-	6.5	-	1.2
48-49 Transportation & warehousing		-	-	-	0.6	-	5.2
51 Information and cultural industries		-	-	-	- 5.3	-	2.6
52 Finance and insurance		-	-	-	4.5	-	3.8
53 Real estate & rental/leasing		-	-	-	22.1	-	2.3
54 Prof'sonal, scientific & tech. serv.		-	-	-	18.6	-	7.3
55 Mgmt. of companies/ent'prises		-	-	-	126.6	-	0.1
56 Admin+support, waste mgmnt srv.		-	10	-	20.4	16.7	4.4
61 Educational services		-	-	-	9.2	-	6.9
62 Health care and social assistance		10	10	-	6.5	16.7	9.6
71 Arts, entertainment and recreation		-	-	-	11.3	-	2.3
72 Accommodation and food services		50	15	- 70.0	7.7	25.0	8.1
721 Accommodation services		40	15	- 62.5	2.5	25.0	1.7
722 Food services & drinking places		10	-	- 100.0	9.2	-	6.4
81 Other services (excl. public admin.)		10	10	-	11.8	16.7	4.9
91 Public administration		15	-	- 100.0	- 2.0	-	5.0
Special Aggregations	Agriculture, Food and Beverage	-	-	-	5.8	-	2.9
	Fishing and Fish Processing	-	-	-	- 3.3	-	0.5
	Logging and Forest Products	25	10	- 60.0	- 14.7	16.7	3.7
	Mining and Mineral Products	10	10	-	17.1	16.7	2.1

Source: Statistics Canada. Industry according to NAICS version used in each census. Unpublished data.

5		Business Locations- Number of Firms by Employment Size Range								
		Firms with no employees		Firms with employees		% change		C Kootenay RD		
		C Kootenay RD	BC	C Kootenay RI	BC	C Kootenay RD	1 to 19	20 to 49	50-199	200 Plus
2008		2,189	185,879	2,502	175,003	-	2,293	134	63	12
2009		2,138	186,541	2,367	176,124	- 5.4	2,170	123	61	13
2010		2,233	194,349	2,408	175,913	1.7	2,204	128	64	12
2011		2,164	195,290	2,381	173,589	- 1.1	2,194	119	58	10

Source: Business Register, Statistics Canada. In some areas, boundary changes/geocoding changes may cause large changes.

6		Municipal Residential Taxes and Charges on a Representative House					
		Silverton					
		House Value		Taxes & Charges			
Year	\$	% change	\$	% change			
2008	206,409		1,869				
2009	210,867	2.2	1,907	2.0			
2010	244,447	15.9	2,015	5.6			
2011	233,999	-4.3	2,061	2.3			
2012	239,992	2.6	2,087	1.3			

Year	House Value	Taxes & Charges
2008	100.0	100.0
2009	102.2	102.0
2010	118.0	108.0
2011	108.0	110.0
2012	118.0	111.0

Source: Ministry of Community, Sport & Cultural Development http://www.cd.gov.bc.ca/lgd/infra/statistics_index.htm (No RD level figures)

Silverton Village

7	Values of Building Permits									
	Residential				Non-Residential			Total		Year
	Number of Units		Value \$'000		Value \$'000			Value \$'000		
Silverton	BC	Silverton	BC	Silverton	BC	Silverton	BC			
2007	352	40,932	78,631	8,611,723	30,716	3,932,968	109,347	12,544,691	2007	
2008	547	30,110	102,282	6,899,289	20,372	3,677,866	122,654	10,577,155	2008	
2009	252	18,607	62,110	4,491,075	20,890	3,138,810	83,000	7,629,885	2009	
2010	282	28,984	70,338	6,705,888	42,505	3,017,921	112,843	9,723,809	2010	
2011	244	25,745	61,602	6,113,406	22,861	3,136,361	84,463	9,249,767	2011	

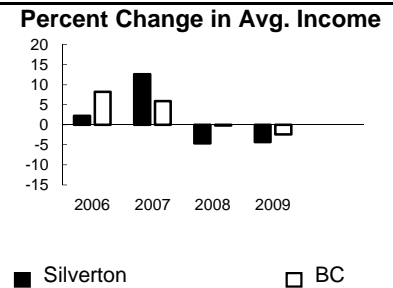
Source: Statistics Canada

Data is for Central Kootenay Regional District

Note: Detailed non-residential permits data can be found on our Website: www.bcstats.gov.bc.ca

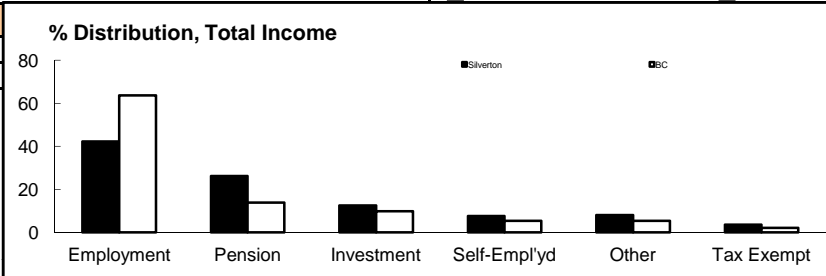
A dash can indicate a nil report, a value of less than \$500, or non-reporting. P indicates 'preliminary'.

8	Personal Taxation Statistics					Percent Change in Avg. Income		
	Total Income of All Returns							
	All Returns (number)		Average Income (\$)		% Change avg. income			
Year	Silverton	BC	Silverton	BC	Silverton	BC		
2005	250	3,154,090	26,456	35,601	n/a	n/a		
2006	250	3,165,750	27,036	38,523	2.2	8.2		
2007	250	3,287,750	30,432	40,802	12.6	5.9		
2008	250	3,383,640	29,024	40,736	-4.6	-0.2		
2009	270	3,406,860	27,774	39,754	-4.3	-2.4		



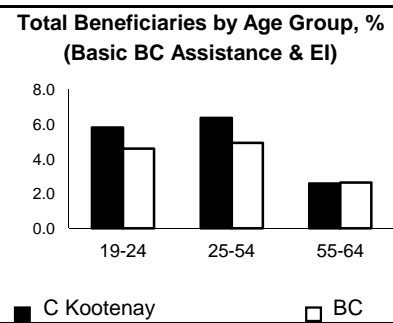
Taxation data available at: <http://www.bcstats.gov.bc.ca/data/dd/income.asp>

9	Source of Total Income 2009				% Distribution, Total Income					
	Silverton		BC							
	\$Thousands	% of Total	% of Total							
Employment	3,168	42.2	63.7							
Pension	1,961	26.2	13.8							
Investment	934	12.5	9.8							
Self-Employed	566	7.5	5.3							
Other	603	8.0	5.3							
Tax Exempt	266	3.5	2.0							
Total	7,499	100.0	100.0							



Source: Canada Revenue Agency. Areas are defined by postal codes and may not match municipal boundaries.

9	Dependency on the Safety Net						Total Beneficiaries by Age Group, % (Basic BC Assistance & EI)		
	Percentage of Population by Age Receiving Benefits - September 2009								
	Age Group	BC Basic* Income Assistance Recipients (%)		Employment Insurance Beneficiaries (%)		Total of BC Basic Income Assistance & EI Beneficiaries (%)			
C Kootenay		BC	C Kootenay	BC	C Kootenay	BC			
Under 19	3.4	2.7	3.6	2.6	5.8	4.6			
19-24	2.3	2.1	4.1	3.1	6.4	4.9			
25-54	2.4	1.9	2.0	2.0	2.6	2.6			
55-64	0.6	0.7	3.5	2.8	5.3	4.4			
19-64	1.9	1.7							



* On temporary assistance only. Excluded are those on Continuous Assistance, aboriginals living on reserve, seniors/OAS, & children living with relatives.

Source: BC Stats (using administrative files from the BC Ministry of Housing & Social Development, and Human Resources & Social Development Canada)

Note: EI Beneficiaries reports now include regular, fishing and employment benefits, work sharing and support measures. The reports exclude sickness, maternity and parental benefits.

10	Business Formations and Failures								
	Incorporations			Bankruptcies					
	Number		Year	Nelson		Kootenay DR		BC	
Silverton	BC	Business		Consumer	Business	Consumer	Business	Consumer	
2007	1	34,036	2005	5	19	n.a.	n.a.	786	8,168
2008	-	30,085	2006	7	21	31	224	585	7,020
2009	1	26,431	2007	3	16	14	197	470	6,651
2010	-	30,305	2008	2	14	16	180	454	7,293
2011	0	30,844	2009	0	39	9	339	380	10,639

Source: BC Ministry of Finance

Source: Office of the Superintendent of Bankruptcy, Government of Canada

Incorporations are counted in municipality of the registered office address which may differ from the actual business location.

Note: Bankruptcy is by urban postal code forward sortation area and is counted where it is filed.