

Slocan Village

1	General
<p>Incorporated in 1901, Slocan has a total land area of 0.75 square km (2006 Census). By highway the Village is 27 km south of Silverton and 68 km northwest of Nelson. Slocan is in the Central Kootenay Regional District.</p>	

2	Population Estimates				Age Distribution				
Annual Estimates					2011 Census			% Distribution, 2011 *	
Year	Slocan	% Change Prev. Year	BC	% Change Prev. Year	Slocan	Male	Female	Slocan	BC
					All ages	145	155	100.0	100.0
2007	345	n/a	4,309,632	n/a	0 - 14	20	25	15.3	15.4
2008	369	7.0	4,384,047	1.7	15 - 24	15	15	10.2	12.6
2009	391	6.0	4,459,947	1.7	25 - 44	30	30	18.6	26.3
2010	397	1.5	4,529,647	1.6	45 - 64	55	55	37.3	30.0
2011	399	0.5	4,573,321	1.0	65 +	25	25	15.3	15.7

Source: Statistics Canada (as of July 1, includes estimate of Census undercount)

* based on published totals, both sexes

2006 Census Profiles can be found on our Website at <http://www.bcstats.gov.bc.ca/census.asp>

3	Selected Census Characteristics					
Characteristics	Slocan			British Columbia		
	2001	2006	% Change	% Change	2001	2006
Population	336	314	- 6.5	5.3	3,907,738	4,113,487
Population (by citizenship)	330	315	- 4.5	5.3	3,868,875	4,074,385
Non-immigrant	310	300	- 3.2	2.9	2,821,870	2,904,240
Immigrant	15	15	-	10.8	1,009,820	1,119,215
Labour force (15+ yrs.)	180	175	- 2.8	8.1	2,059,950	2,226,380
Employees	155	135	- 12.9	9.2	1,715,600	1,873,050
Self-employed	20	35	75.0	7.4	291,455	313,000
Participation rate [ppt.=percentage points]	67.3%	66.0%	-1.3 ppt.	0.4 ppt.	65.2%	65.6%
Unemployment rate	10.8%	22.9%	12.1 ppt.	-2.5 ppt.	8.5%	6.0%
Total population 25 to 64 years	195	190	- 2.6	6.5	2,144,050	2,284,465
No certificate, diploma or degree	65	45	- 30.8	- 40.1	471,470	282,200
High school certificate or equivalent	20	40	100.0	27.7	462,925	591,275
Apprenticeship/trades certificate or diploma	55	50	- 9.1	- 7.4	295,180	273,450
College, CEGEP or other cert. or diploma	40	25	- 37.5	11.3	401,760	447,005
University certificate, diploma or degree	30	30	-	34.7	512,715	690,535
Bachelor's degree	10	25	150.0	23.0	282,800	347,715
Census families	105	95	- 9.5	6.9	1,086,030	1,161,420
Lone-parent families	10	15	50.0	4.0	168,420	175,165
Households	140	145	3.6	7.1	1,534,335	1,643,150
1-family households	105	95	- 9.5	6.1	1,012,925	1,074,850
Multi-family households	-	-	-	18.4	35,050	41,510
Non-family households	30	50	66.7	8.3	486,355	526,785
Median Income (2000 & 2005)	\$ 13,977	\$ 23,836	70.5	12.5	\$ 22,095	\$ 24,867
Males	\$ 19,306	\$ 28,311	46.6	9.0	\$ 28,976	\$ 31,598
Females	\$ 10,517	\$ 15,900	51.2	14.0	\$ 17,546	\$ 19,997
Median Family Income (2000 & 2005)	\$ 31,372	\$ 54,435	73.5	20.0	\$ 54,840	\$ 65,787
Economic Families	110	100	- 9.1	6.5	1,044,850	1,112,810
2001 Incidence, low income	-	10.5%	10.5 ppt.	-0.6 ppt.	13.9%	13.3%
2006 Prevalence, low income	-	10.5%	10.5 ppt.	-0.6 ppt.	13.9%	13.3%
Unattached persons, 15+	40	60	50.0	4.7	576,825	603,880
Incidence, low income	-	25.0%	25.0 ppt.	-1.4 ppt.	38.1%	36.7%
Population in private hh.	330	315	- 4.5	5.1	3,785,270	3,978,215
Incidence, low income	14.4%	14.3%	-0.1 ppt.	-0.5 ppt.	17.8%	17.3%
Dwellings	140	150	7.1	7.1	1,534,335	1,643,150
Owned	85	115	35.3	12.5	1,017,485	1,145,045
Rented	50	30	- 40.0	- 3.6	512,360	493,995
Average gross rent	\$ 574	\$ 534	- 7.0	10.4	\$ 750	\$ 828
Average owners' payments	\$ 495	\$ 536	8.3	17.1	\$ 904	\$ 1,059
Avg. value, owned dwell.	\$ 100,285	\$ 122,679	22.3	81.5	\$ 230,645	\$ 418,703

Source: Statistics Canada. Notes: incomes are for 2005 and 2000; rent/owner's payments are restricted to non-farm, non-reserve private dwellings.

Slocan Village

4		Labour Force by Industry (NAICS)					
		Slocan			BC	% Distribution, 2006	
Industry		2001	2006	% Change	% change	Slocan	BC
Total labour force		185	170	- 8.1	8.1	100.0	100.0
Industry - Not applicable		-	-	-	- 26.6	-	1.5
All industries (Experienced LF)		180	175	- 2.8	8.9	102.9	98.5
111-112 Farms		-	-	-	5.2	-	1.8
113 Forestry and logging		20	-	- 100.0	- 10.0	-	1.0
114 Fishing, hunting and trapping		-	-	-	1.3	-	0.2
1151/2 Support activities for farms		-	-	-	11.3	-	0.1
1153 Support activities for forestry		10	10	-	- 21.5	5.9	0.3
21 Mining and oil and gas extraction		-	-	-	42.6	-	0.9
22 Utilities		-	-	-	- 3.4	-	0.5
23 Construction		-	30	-	39.9	17.6	7.5
31-33 Manufacturing		60	25	- 58.3	- 2.7	14.7	8.5
311 Food manufacturing		-	-	-	3.6	-	1.0
321 Wood product manufacturing		50	20	- 60.0	- 16.1	11.8	1.7
322 Paper manufacturing		-	-	-	- 13.5	-	0.6
41 Wholesale trade		-	-	-	11.6	-	4.1
44-45 Retail trade		20	30	50.0	6.9	17.6	11.2
441 Motor vehicle and parts dealers		-	-	-	9.0	-	1.1
445 Food and beverage stores		10	15	50.0	8.4	8.8	2.9
448 Clothing & clothing accessories		-	-	-	9.2	-	1.1
452 General merchandise stores		-	10	-	6.5	5.9	1.2
48-49 Transportation & warehousing		15	-	- 100.0	0.6	-	5.2
51 Information and cultural industries		-	-	-	- 5.3	-	2.6
52 Finance and insurance		-	-	-	4.5	-	3.8
53 Real estate & rental/leasing		-	-	-	22.1	-	2.3
54 Prof'sonal, scientific & tech. serv.		-	10	-	18.6	5.9	7.3
55 Mgmt. of companies/ent'prises		-	-	-	126.6	-	0.1
56 Admin+support, waste mgmnt srv.		-	15	-	20.4	8.8	4.4
61 Educational services		-	15	-	9.2	8.8	6.9
62 Health care and social assistance		10	-	- 100.0	6.5	-	9.6
71 Arts, entertainment and recreation		10	-	- 100.0	11.3	-	2.3
72 Accommodation and food services		25	10	- 60.0	7.7	5.9	8.1
721 Accommodation services		15	-	- 100.0	2.5	-	1.7
722 Food services & drinking places		10	10	-	9.2	5.9	6.4
81 Other services (excl. public admin.)		10	-	- 100.0	11.8	-	4.9
91 Public administration		-	15	-	- 2.0	8.8	5.0
Special Aggregations	Agriculture, Food and Beverage	-	-	-	5.8	-	2.9
	Fishing and Fish Processing	-	-	-	- 3.3	-	0.5
	Logging and Forest Products	75	30	- 60.0	- 14.7	17.6	3.7
	Mining and Mineral Products	-	-	-	17.1	-	2.1

Source: Statistics Canada. Industry according to NAICS version used in each census. Unpublished data.

5		Business Locations- Number of Firms by Employment Size Range								
		Firms with no employees		Firms with employees		% change	C Kootenay RD			
		C Kootenay RD	BC	C Kootenay RI	BC	C Kootenay RD	1 to 19	20 to 49	50-199	200 Plus
2008		2,189	185,879	2,502	175,003	-	2,293	134	63	12
2009		2,138	186,541	2,367	176,124	- 5.4	2,170	123	61	13
2010		2,233	194,349	2,408	175,913	1.7	2,204	128	64	12
2011		2,164	195,290	2,381	173,589	- 1.1	2,194	119	58	10

Source: Business Register, Statistics Canada. In some areas, boundary changes/geocoding changes may cause large changes.

6		Municipal Residential Taxes and Charges on a Representative House					
		Slocan					
		House Value		Taxes & Charges			
Year	\$	% change	\$	% change			
2008	118,047		1,191				
2009	118,290	0.2	1,381	16.0			
2010	148,341	25.4	1,080	-21.8			
2011	148,456	0.1	1,602	48.2			
2012	153,687	3.5	1,646	2.8			

Source: Ministry of Community, Sport & Cultural Development http://www.cd.gov.bc.ca/lgd/infra/statistics_index.htm (No RD level figures)

Slocan Village

7	Values of Building Permits									Year
	Residential				Non-Residential			Total		
	Number of Units		Value \$'000		Value \$'000			Value \$'000		
Year	Slocan	BC	Slocan	BC	Slocan	BC	Slocan	BC	Year	
2007	352	40,932	78,631	8,611,723	30,716	3,932,968	109,347	12,544,691	2007	
2008	547	30,110	102,282	6,899,289	20,372	3,677,866	122,654	10,577,155	2008	
2009	252	18,607	62,110	4,491,075	20,890	3,138,810	83,000	7,629,885	2009	
2010	282	28,984	70,338	6,705,888	42,505	3,017,921	112,843	9,723,809	2010	
2011	244	25,745	61,602	6,113,406	22,861	3,136,361	84,463	9,249,767	2011	

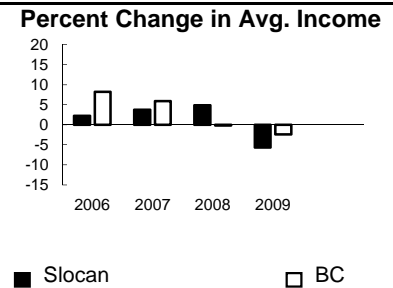
Source: Statistics Canada

Data is for Central Kootenay Regional District

Note: Detailed non-residential permits data can be found on our Website: www.bcstats.gov.bc.ca

A dash can indicate a nil report, a value of less than \$500, or non-reporting. P indicates 'preliminary'.

8	Personal Taxation Statistics						Percent Change in Avg. Income	
	Total Income of All Returns							
	Year	All Returns (number)		Average Income (\$)		% Change avg. income		
	Slocan	BC	Slocan	BC	Slocan	BC		
2005	480	3,154,090	21,440	35,601	n/a	n/a		
2006	460	3,165,750	21,920	38,523	2.2	8.2		
2007	480	3,287,750	22,731	40,802	3.7	5.9		
2008	490	3,383,640	23,839	40,736	4.9	-0.2		
2009	520	3,406,860	22,490	39,754	-5.7	-2.4		



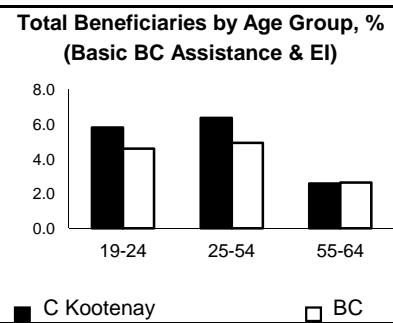
Taxation data available at: <http://www.bcstats.gov.bc.ca/data/dd/income.asp>

9	Source of Total Income 2009				% Distribution, Total Income					
		Slocan		BC	Employment	Pension	Investment	Self-Emply'd	Other	Tax Exempt
		\$Thousands	% of Total							
Employment	5,672	48.5	63.7							
Pension	2,398	20.5	13.8							
Investment	418	3.6	9.8							
Self-Employed	1,201	10.3	5.3							
Other	1,328	11.4	5.3							
Tax Exempt	677	5.8	2.0							
Total	11,695	100.0	100.0							



Source: Canada Revenue Agency. Areas are defined by postal codes and may not match municipal boundaries.

9	Dependency on the Safety Net						Total Beneficiaries by Age Group, % (Basic BC Assistance & EI)		
	Percentage of Population by Age Receiving Benefits - September 2009								
	Age Group	BC Basic* Income Assistance Recipients (%)		Employment Insurance Beneficiaries (%)		Total of BC Basic Income Assistance & EI Beneficiaries (%)		19-24	25-54
C Kootenay		BC	C Kootenay	BC	C Kootenay	BC			
Under 19	3.4	2.7							
19-24	2.3	2.1	3.6	2.6	5.8	4.6			
25-54	2.4	1.9	4.1	3.1	6.4	4.9			
55-64	0.6	0.7	2.0	2.0	2.6	2.6			
19-64	1.9	1.7	3.5	2.8	5.3	4.4			



* On temporary assistance only. Excluded are those on Continuous Assistance, aboriginals living on reserve, seniors/OAS, & children living with relatives.

Source: BC Stats (using administrative files from the BC Ministry of Housing & Social Development, and Human Resources & Social Development Canada)

Note: EI Beneficiaries reports now include regular, fishing and employment benefits, work sharing and support measures. The reports exclude sickness, maternity and parental benefits.

10	Business Formations and Failures								
	Incorporations			Bankruptcies					
	Year	Number		Year	Nelson		Kootenay DR		BC
Slocan		BC	Business		Consumer	Business	Consumer	Business	Consumer
2007	1	34,036	2005	5	19	n.a.	n.a.	786	8,168
2008	1	30,085	2006	7	21	31	224	585	7,020
2009	1	26,431	2007	3	16	14	197	470	6,651
2010	1	30,305	2008	2	14	16	180	454	7,293
2011	2	30,844	2009	0	39	9	339	380	10,639

Source: BC Ministry of Finance

Source: Office of the Superintendent of Bankruptcy, Government of Canada

Incorporations are counted in municipality of the registered office address which may differ from the actual business location.

Note: Bankruptcy is by urban postal code forward sortation area and is counted where it is filed.