

Trail City

1	General
<p>Incorporated in 1901, Trail has a total land area of 34.78 square km (2006 Census). By highway the City is 634 km east of Vancouver, 126 km west of Creston and 26 km south of Castlegar. Trail is in the Kootenay-Boundary Regional District.</p>	

2	Population Estimates				Age Distribution				
Annual Estimates					2011 Census			% Distribution, 2011 *	
Year	Trail	% Change Prev. Year	BC	% Change Prev. Year	Trail	Male	Female	Trail	BC
2007	7,366	n/a	4,309,632	n/a	All ages	3,615	4,070	100.0	100.0
2008	7,365	0.0	4,384,047	1.7	0 - 14	515	490	13.0	15.4
2009	7,362	0.0	4,459,947	1.7	15 - 24	420	415	10.9	12.6
2010	7,240	-1.7	4,529,647	1.6	25 - 44	720	775	19.5	26.3
2011	7,260	0.3	4,573,321	1.0	45 - 64	1,170	1,245	31.4	30.0
					65 +	795	1,145	25.2	15.7

Source: Statistics Canada (as of July 1, includes estimate of Census undercount)

* based on published totals, both sexes

2006 Census Profiles can be found on our Website at <http://www.bcstats.gov.bc.ca/census.asp>

3	Selected Census Characteristics						
			Trail			British Columbia	
Characteristics	2001	2006	% Change	% Change	2001	2006	
Population	7,575	7,237	- 4.5	5.3	3,907,738	4,113,487	
Population (by citizenship)	7,325	6,970	- 4.8	5.3	3,868,875	4,074,385	
Non-immigrant	6,190	6,065	- 2.0	2.9	2,821,870	2,904,240	
Immigrant	1,110	900	- 18.9	10.8	1,009,820	1,119,215	
Labour force (15+ yrs.)	3,290	3,355	2.0	8.1	2,059,950	2,226,380	
Employees	2,840	3,045	7.2	9.2	1,715,600	1,873,050	
Self-employed	310	250	- 19.4	7.4	291,455	313,000	
Participation rate [ppt.=percentage points]	52.6%	55.5%	2.9 ppt.	0.4 ppt.	65.2%	65.6%	
Unemployment rate	12.6%	6.3%	-6.3 ppt.	-2.5 ppt.	8.5%	6.0%	
Total population 25 to 64 years	3,595	3,545	- 1.4	6.5	2,144,050	2,284,465	
No certificate, diploma or degree	830	470	- 43.4	- 40.1	471,470	282,200	
High school certificate or equivalent	750	1,090	45.3	27.7	462,925	591,275	
Apprenticeship/trades certificate or diploma	855	650	- 24.0	- 7.4	295,180	273,450	
College, CEGEP or other cert. or diploma	790	790	-	11.3	401,760	447,005	
University certificate, diploma or degree	375	540	44.0	34.7	512,715	690,535	
Bachelor's degree	185	230	24.3	23.0	282,800	347,715	
Census families	2,085	1,985	- 4.8	6.9	1,086,030	1,161,420	
Lone-parent families	370	280	- 24.3	4.0	168,420	175,165	
Households	3,595	3,515	- 2.2	7.1	1,534,335	1,643,150	
1-family households	2,055	1,940	- 5.6	6.1	1,012,925	1,074,850	
Multi-family households	10	20	100.0	18.4	35,050	41,510	
Non-family households	1,525	1,555	2.0	8.3	486,355	526,785	
Median Income (2000 & 2005)	\$ 20,003	\$ 24,555	22.8	12.5	\$ 22,095	\$ 24,867	
Males	\$ 31,924	\$ 36,491	14.3	9.0	\$ 28,976	\$ 31,598	
Females	\$ 15,854	\$ 18,343	15.7	14.0	\$ 17,546	\$ 19,997	
Median Family Income (2000 & 2005)	\$ 53,439	\$ 57,679	7.9	20.0	\$ 54,840	\$ 65,787	
Economic Families	2,090	1,990	- 4.8	6.5	1,044,850	1,112,810	
2001 Incidence, low income 2006 Prevalence, low income	7.7%	7.3%	-0.4 ppt.	-0.6 ppt.	13.9%	13.3%	
Unattached persons, 15+	1,605	1,620	0.9	4.7	576,825	603,880	
Incidence, low income	35.0%	26.0%	-9.0 ppt.	-1.4 ppt.	38.1%	36.7%	
Population in private hh.	7,305	6,950	- 4.9	5.1	3,785,270	3,978,215	
Incidence, low income	13.4%	12.1%	-1.3 ppt.	-0.5 ppt.	17.8%	17.3%	
Dwellings	3,595	3,515	- 2.2	7.1	1,534,335	1,643,150	
Owned	2,590	2,535	- 2.1	12.5	1,017,485	1,145,045	
Rented	1,005	985	- 2.0	- 3.6	512,360	493,995	
Average gross rent	\$ 504	\$ 556	10.3	10.4	\$ 750	\$ 828	
Average owners' payments	\$ 543	\$ 633	16.6	17.1	\$ 904	\$ 1,059	
Avg. value, owned dwell.	\$ 106,794	\$ 142,303	33.2	81.5	\$ 230,645	\$ 418,703	

Source: Statistics Canada. Notes: incomes are for 2005 and 2000; rent/owner's payments are restricted to non-farm, non-reserve private dwellings.

Trail City

4		Labour Force by Industry (NAICS)					
		Trail			BC	% Distribution, 2006	
Industry		2001	2006	% Change	% change	Trail	BC
Total labour force		3,290	3,355	2.0	8.1	100.0	100.0
Industry - Not applicable		125	50	- 60.0	- 26.6	1.5	1.5
All industries (Experienced LF)		3,160	3,300	4.4	8.9	98.4	98.5
111-112 Farms		-	10	-	5.2	0.3	1.8
113 Forestry and logging		15	15	-	- 10.0	0.4	1.0
114 Fishing, hunting and trapping		-	-	-	1.3	-	0.2
1151/2 Support activities for farms		-	-	-	11.3	-	0.1
1153 Support activities for forestry		-	-	-	- 21.5	-	0.3
21 Mining and oil and gas extraction		25	55	120.0	42.6	1.6	0.9
22 Utilities		65	130	100.0	- 3.4	3.9	0.5
23 Construction		155	175	12.9	39.9	5.2	7.5
31-33 Manufacturing		670	535	- 20.1	- 2.7	15.9	8.5
311 Food manufacturing		20	-	- 100.0	3.6	-	1.0
321 Wood product manufacturing		50	30	- 40.0	- 16.1	0.9	1.7
322 Paper manufacturing		-	30	-	- 13.5	0.9	0.6
41 Wholesale trade		35	85	142.9	11.6	2.5	4.1
44-45 Retail trade		420	570	35.7	6.9	17.0	11.2
441 Motor vehicle and parts dealers		50	55	10.0	9.0	1.6	1.1
445 Food and beverage stores		145	135	- 6.9	8.4	4.0	2.9
448 Clothing & clothing accessories		15	15	-	9.2	0.4	1.1
452 General merchandise stores		40	125	212.5	6.5	3.7	1.2
48-49 Transportation & warehousing		110	25	- 77.3	0.6	0.7	5.2
51 Information and cultural industries		65	55	- 15.4	- 5.3	1.6	2.6
52 Finance and insurance		70	105	50.0	4.5	3.1	3.8
53 Real estate & rental/leasing		50	50	-	22.1	1.5	2.3
54 Prof'sonal, scientific & tech. serv.		110	130	18.2	18.6	3.9	7.3
55 Mgmt. of companies/ent'prises		-	-	-	126.6	-	0.1
56 Admin+support, waste mgmnt srv.		95	140	47.4	20.4	4.2	4.4
61 Educational services		155	175	12.9	9.2	5.2	6.9
62 Health care and social assistance		455	350	- 23.1	6.5	10.4	9.6
71 Arts, entertainment and recreation		50	65	30.0	11.3	1.9	2.3
72 Accommodation and food services		275	280	1.8	7.7	8.3	8.1
721 Accommodation services		60	75	25.0	2.5	2.2	1.7
722 Food services & drinking places		210	210	-	9.2	6.3	6.4
81 Other services (excl. public admin.)		235	185	- 21.3	11.8	5.5	4.9
91 Public administration		90	150	66.7	- 2.0	4.5	5.0
Special Aggregations	Agriculture, Food and Beverage	25	10	- 60.0	5.8	0.3	2.9
	Fishing and Fish Processing	-	-	-	- 3.3	-	0.5
	Logging and Forest Products	70	80	14.3	- 14.7	2.4	3.7
	Mining and Mineral Products	570	435	- 23.7	17.1	13.0	2.1

Source: Statistics Canada. Industry according to NAICS version used in each census. Unpublished data.

5		Business Locations- Number of Firms by Employment Size Range								
		Firms with no employees		Firms with employees		% change	Koot-Bound RD			
		Koot-Bound RD	BC	Koot-Bound R	BC	Koot-Bound RD	1 to 19	20 to 49	50-199	200 Plus
2008		1,030	185,879	1,092	175,003	-	968	83	33	8
2009		1,036	186,541	1,157	176,124	6.0	1,035	78	36	8
2010		1,083	194,349	1,192	175,913	3.0	1,070	77	39	6
2011		1,084	195,290	1,185	173,589	- 0.6	1,061	81	36	7

Source: Business Register, Statistics Canada. In some areas, boundary changes/geocoding changes may cause large changes.

6		Municipal Residential Taxes and Charges on a Representative House					
		Trail					
		House Value		Taxes & Charges			
Year	\$	% change	\$	% change			
2008	178,251		2,579				
2009	181,987	2.1	2,516	-2.4			
2010	185,459	1.9	2,552	1.4			
2011	182,969	-1.3	2,571	0.7			
2012	184,480	0.8	2,667	3.8			

Source: Ministry of Community, Sport & Cultural Development http://www.cd.gov.bc.ca/lgd/infra/statistics_index.htm (No RD level figures)

Trail City

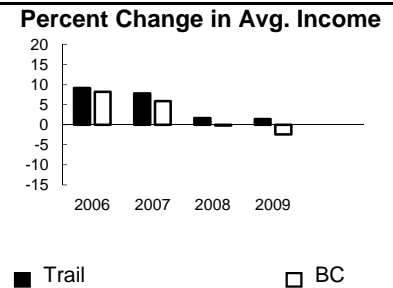
7	Values of Building Permits									
	Residential					Non-Residential		Total		Year
	Number of Units		Value \$'000			Value \$'000		Value \$'000		
Trail	BC	Trail	BC	Trail	BC	Trail	BC			
2007	15	40,932	4,411	8,611,723	33,615	3,932,968	38,026	12,544,691	2007	
2008	20	30,110	5,625	6,899,289	1,946	3,677,866	7,571	10,577,155	2008	
2009	10	18,607	3,668	4,491,075	4,533	3,138,810	8,201	7,629,885	2009	
2010	6	28,984	3,157	6,705,888	8,341	3,017,921	11,498	9,723,809	2010	
2011	10	25,745	4,309	6,113,406	2,920	3,136,361	7,229	9,249,767	2011	

Source: Statistics Canada

Note: Detailed non-residential permits data can be found on our Website: www.bcstats.gov.bc.ca

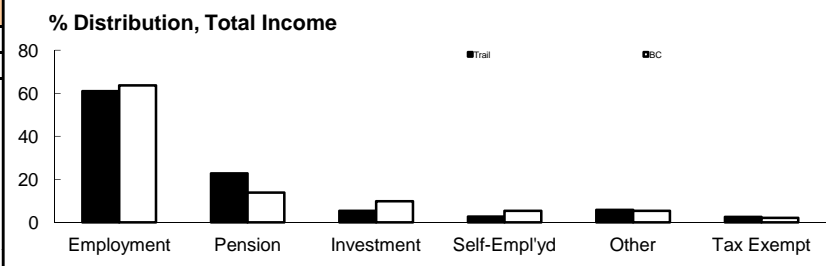
A dash can indicate a nil report, a value of less than \$500, or non-reporting. P indicates 'preliminary'.

8	Personal Taxation Statistics						Percent Change in Avg. Income	
	Total Income of All Returns							
	All Returns (number)		Average Income (\$)		% Change avg. income			
Year	Trail	BC	Trail	BC	Trail	BC		
2005	7,830	3,154,090	32,323	35,601	n/a	n/a		
2006	7,790	3,165,750	35,289	38,523	9.2	8.2		
2007	7,980	3,287,750	38,034	40,802	7.8	5.9		
2008	7,990	3,383,640	38,658	40,736	1.6	-0.2		
2009	7,970	3,406,860	39,203	39,754	1.4	-2.4		



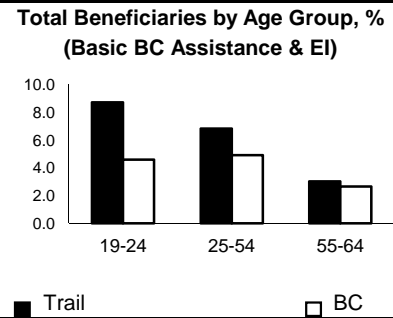
Taxation data available at: <http://www.bcstats.gov.bc.ca/data/dd/income.asp>

Source of Total Income 2009				% Distribution, Total Income					
	Trail		BC						
	\$Thousands	% of Total		% of Total					
Employment	190,593	61.0	63.7						
Pension	70,943	22.7	13.8						
Investment	16,719	5.4	9.8						
Self-Employed	8,295	2.7	5.3						
Other	17,964	5.7	5.3						
Tax Exempt	7,928	2.5	2.0						
Total	312,448	100.0	100.0						



Source: Canada Revenue Agency. Areas are defined by postal codes and may not match municipal boundaries.

9	Dependency on the Safety Net						Total Beneficiaries by Age Group, % (Basic BC Assistance & EI)		
	Percentage of Population by Age Receiving Benefits - September 2009								
	Age Group	BC Basic* Income Assistance Recipients (%)		Employment Insurance Beneficiaries (%)		Total of BC Basic Income Assistance & EI Beneficiaries (%)			
Trail		BC	Trail	BC	Trail	BC			
Under 19	4.3	2.7							
19-24	4.7	2.1	4.2	2.6	8.7	4.6			
25-54	3.4	1.9	3.5	3.1	6.8	4.9			
55-64	1.5	0.7	1.6	2.0	3.0	2.6			
19-64	3.1	1.7	3.1	2.8	6.1	4.4			



* On temporary assistance only. Excluded are those on Continuous Assistance, aboriginals living on reserve, seniors/OAS, & children living with relatives.

Source: BC Stats (using administrative files from the BC Ministry of Housing & Social Development, and Human Resources & Social Development Canada)

Note: EI Beneficiaries reports now include regular, fishing and employment benefits, work sharing and support measures. The reports exclude sickness, maternity and parental benefits.

10	Business Formations and Failures									
	Incorporations				Bankruptcies					
	Number				Trail		Kootenay DR		BC	
Year	Trail	BC	Year	Business	Consumer	Business	Consumer	Business	Consumer	
2007	37	34,036	2005	2	23	n.a.	n.a.	786	8,168	
2008	31	30,085	2006	1	17	31	224	585	7,020	
2009	28	26,431	2007	0	17	14	197	470	6,651	
2010	32	30,305	2008	0	22	16	180	454	7,293	
2011	19	30,844	2009	1	18	9	339	380	10,639	

Source: BC Ministry of Finance

Source: Office of the Superintendent of Bankruptcy, Government of Canada

Incorporations are counted in municipality of the registered office address which may differ from the actual business location.

Note: Bankruptcy is by urban postal code forward sortation area and is counted where it is filed.