

## Canal Flats Village

1	General
<p>Incorporated in 2004, Canal Flats has a total land area of 10.84 square km (2006 Census). The village is in the East Kootenay Regional District, about halfway between Invermere to the north and Kimberley to the south.</p>	

2	Population Estimates				Age Distribution				
Annual Estimates					2011 Census			% Distribution, 2011 *	
Year	Canal Flats	% Change Prev. Year	BC	% Change Prev. Year	Canal Flats	Male	Female	Canal Flats	BC
					All ages	375	340	100.0	100.0
2007	747	n/a	4,309,632	n/a	0 - 14	75	60	18.9	15.4
2008	783	4.8	4,384,047	1.7	15 - 24	35	35	10.5	12.6
2009	818	4.5	4,459,947	1.7	25 - 44	85	90	25.2	26.3
2010	826	1.0	4,529,647	1.6	45 - 64	110	120	31.5	30.0
2011	813	-1.6	4,573,321	1.0	65 +	60	35	13.3	15.7

Source: Statistics Canada (as of July 1, includes estimate of Census undercount)

\* based on published totals, both sexes

**2006 Census Profiles can be found on our Website at <http://www.bcstats.gov.bc.ca/census.asp>**

3	Selected Census Characteristics					
Characteristics	Canal Flats			British Columbia		
	2001	2006	% Change	% Change	2001	2006
Population	-	700	-	5.3	3,907,738	4,113,487
Population (by citizenship)	-	700	-	5.3	3,868,875	4,074,385
Non-immigrant	-	625	-	2.9	2,821,870	2,904,240
Immigrant	-	75	-	10.8	1,009,820	1,119,215
Labour force (15+ yrs.)	-	435	-	8.1	2,059,950	2,226,380
Employees	-	380	-	9.2	1,715,600	1,873,050
Self-employed	-	45	-	7.4	291,455	313,000
Participation rate [ppt.=percentage points]	-	71.9%	-	0.4 ppt.	65.2%	65.6%
Unemployment rate	-	5.7%	-	-2.5 ppt.	8.5%	6.0%
Total population 25 to 64 years	-	385	-	6.5	2,144,050	2,284,465
No certificate, diploma or degree	-	130	-	-40.1	471,470	282,200
High school certificate or equivalent	-	155	-	27.7	462,925	591,275
Apprenticeship/trades certificate or diploma	-	25	-	-7.4	295,180	273,450
College, CEGEP or other cert. or diploma	-	75	-	11.3	401,760	447,005
University certificate, diploma or degree	-	-	-	34.7	512,715	690,535
Bachelor's degree	-	-	-	23.0	282,800	347,715
Census families	-	220	-	6.9	1,086,030	1,161,420
Lone-parent families	-	30	-	4.0	168,420	175,165
Households	-	290	-	7.1	1,534,335	1,643,150
1-family households	-	215	-	6.1	1,012,925	1,074,850
Multi-family households	-	-	-	18.4	35,050	41,510
Non-family households	-	70	-	8.3	486,355	526,785
Median Income (2000 & 2005)	-	\$ 24,874	-	12.5	\$ 22,095	\$ 24,867
Males	-	\$ 37,324	-	9.0	\$ 28,976	\$ 31,598
Females	-	\$ 12,535	-	14.0	\$ 17,546	\$ 19,997
Median Family Income (2000 & 2005)	-	\$ 53,984	-	20.0	\$ 54,840	\$ 65,787
Economic Families	-	215	-	6.5	1,044,850	1,112,810
2001 Incidence, low income    2006 Prevalence, low income	-	-	-	-0.6 ppt.	13.9%	13.3%
Unattached persons, 15+	-	105	-	4.7	576,825	603,880
Incidence, low income	-	25.0%	-	-1.4 ppt.	38.1%	36.7%
Population in private hh.	-	695	-	5.1	3,785,270	3,978,215
Incidence, low income	-	3.6%	-	-0.5 ppt.	17.8%	17.3%
Dwellings	-	290	-	7.1	1,534,335	1,643,150
Owned	-	230	-	12.5	1,017,485	1,145,045
Rented	-	60	-	-3.6	512,360	493,995
Average gross rent	-	\$ 498	-	10.4	\$ 750	\$ 828
Average owners' payments	-	\$ 582	-	17.1	\$ 904	\$ 1,059
Avg. value, owned dwel.	-	\$ 140,917	-	81.5	\$ 230,645	\$ 418,703

Source: Statistics Canada. Notes: incomes are for 2005 and 2000; rent/owner's payments are restricted to non-farm, non-reserve private dwellings.

## Canal Flats Village

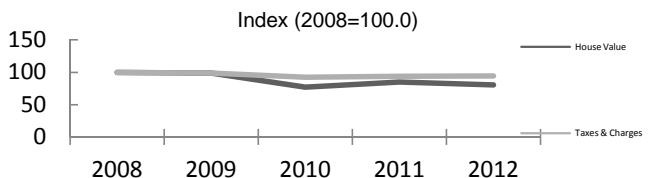
4		Labour Force by Industry (NAICS)					
		Canal Flats			BC	% Distribution, 2006	
Industry		2001	2006	% Change	% change	Canal Flats	BC
Total labour force		30,170	435	- 98.6	8.1	100.0	100.0
Industry - Not applicable		510	10	- 98.0	- 26.6	2.3	1.5
<b>All industries (Experienced LF)</b>		29,665	430	- 98.6	8.9	98.9	98.5
111-112 Farms		535	10	- 98.1	5.2	2.3	1.8
113 Forestry and logging		690	35	- 94.9	- 10.0	8.0	1.0
114 Fishing, hunting and trapping		-	-	-	1.3	-	0.2
1151/2 Support activities for farms		15	10	- 33.3	11.3	2.3	0.1
1153 Support activities for forestry		345	-	- 100.0	- 21.5	-	0.3
21 Mining and oil and gas extraction		2,830	15	- 99.5	42.6	3.4	0.9
22 Utilities		125	-	- 100.0	- 3.4	-	0.5
23 Construction		2,265	60	- 97.4	39.9	13.8	7.5
31-33 Manufacturing		2,180	75	- 96.6	- 2.7	17.2	8.5
311 Food manufacturing		155	-	- 100.0	3.6	-	1.0
321 Wood product manufacturing		1,130	70	- 93.8	- 16.1	16.1	1.7
322 Paper manufacturing		355	-	- 100.0	- 13.5	-	0.6
41 Wholesale trade		810	10	- 98.8	11.6	2.3	4.1
44-45 Retail trade		3,370	50	- 98.5	6.9	11.5	11.2
441 Motor vehicle and parts dealers		485	-	- 100.0	9.0	-	1.1
445 Food and beverage stores		935	10	- 98.9	8.4	2.3	2.9
448 Clothing & clothing accessories		200	-	- 100.0	9.2	-	1.1
452 General merchandise stores		360	-	- 100.0	6.5	-	1.2
48-49 Transportation & warehousing		1,500	15	- 99.0	0.6	3.4	5.2
51 Information and cultural industries		345	-	- 100.0	- 5.3	-	2.6
52 Finance and insurance		820	10	- 98.8	4.5	2.3	3.8
53 Real estate & rental/leasing		460	30	- 93.5	22.1	6.9	2.3
54 Prof'sonal, scientific & tech. serv.		935	10	- 98.9	18.6	2.3	7.3
55 Mgmt. of companies/ent'prises		20	-	- 100.0	126.6	-	0.1
56 Admin+support, waste mgmnt srv.		910	-	- 100.0	20.4	-	4.4
61 Educational services		1,700	-	- 100.0	9.2	-	6.9
62 Health care and social assistance		2,570	20	- 99.2	6.5	4.6	9.6
71 Arts, entertainment and recreation		1,045	10	- 99.0	11.3	2.3	2.3
72 Accommodation and food services		3,465	75	- 97.8	7.7	17.2	8.1
721 Accommodation services		1,480	40	- 97.3	2.5	9.2	1.7
722 Food services & drinking places		1,985	35	- 98.2	9.2	8.0	6.4
81 Other services (excl. public admin.)		1,405	10	- 99.3	11.8	2.3	4.9
91 Public administration		1,330	10	- 99.2	- 2.0	2.3	5.0
Special Aggregations	Agriculture, Food and Beverage	730	10	- 98.6	5.8	2.3	2.9
	Fishing and Fish Processing	15	-	- 100.0	- 3.3	-	0.5
	Logging and Forest Products	2,520	105	- 95.8	- 14.7	24.1	3.7
	Mining and Mineral Products	2,980	15	- 99.5	17.1	3.4	2.1

Source: Statistics Canada. Industry according to NAICS version used in each census. Unpublished data.

5		Business Locations- Number of Firms by Employment Size Range								
		Firms with no employees		Firms with employees		% change	E kootenay RD			
		E kootenay RD	BC	E kootenay RD	BC	E kootenay RD	1 to 19	20 to 49	50-199	200 Plus
2008		1,974	185,879	2,397	175,003	-	2,109	182	85	21
2009		2,048	186,541	2,459	176,124	2.6	2,169	198	73	19
2010		2,250	194,349	2,708	175,913	10.1	2,407	208	75	18
2011		2,231	195,290	2,662	173,589	- 1.7	2,376	195	75	16

Source: Business Register, Statistics Canada. In some areas, boundary changes/geocoding changes may cause large changes.

6		Municipal Residential Taxes and Charges on a Representative House					
		Canal Flats					
		House Value		Taxes & Charges			
Year		\$	% change	\$	% change		
2008		264,503		2,277			
2009		261,716	-1.1	2,254	-1.0		
2010		204,007	-22.1	2,105	-6.6		
2011		224,733	10.2	2,135	1.4		
2012		213,278	-5.1	2,149	0.7		



Source: Ministry of Community, Sport & Cultural Development [http://www.cd.gov.bc.ca/lgd/infra/statistics\\_index.htm](http://www.cd.gov.bc.ca/lgd/infra/statistics_index.htm) (No RD level figures)

## Canal Flats Village

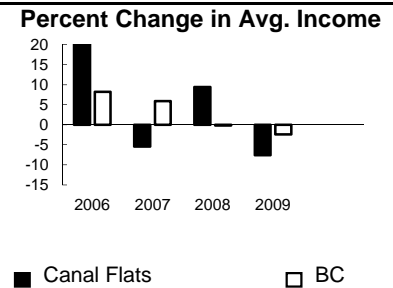
7	Values of Building Permits								
	Residential				Non-Residential		Total		Year
	Number of Units		Value \$'000		Value \$'000		Value \$'000		
Canal Flats	BC	Canal Flats	BC	Canal Flats	BC	Canal Flats	BC		
2007	18	40,932	3,216	8,611,723	-	3,932,968	3,216	12,544,691	2007
2008	10	30,110	1,939	6,899,289	-	3,677,866	1,939	10,577,155	2008
2009	4	18,607	2,016	4,491,075	-	3,138,810	2,016	7,629,885	2009
2010	2	28,984	505	6,705,888	46	3,017,921	551	9,723,809	2010
2011	3	25,745	720	6,113,406	-	3,136,361	720	9,249,767	2011

Source: Statistics Canada

Note: Detailed non-residential permits data can be found on our Website: www.bcstats.gov.bc.ca

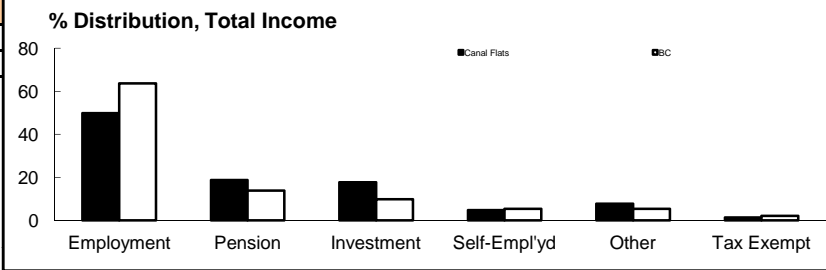
A dash can indicate a nil report, a value of less than \$500, or non-reporting. P indicates 'preliminary'.

8	Personal Taxation Statistics						Percent Change in Avg. Income
	Total Income of All Returns						
	All Returns (number)		Average Income (\$)		% Change avg. income		
Year	Canal Flats	BC	Canal Flats	BC	Canal Flats	BC	
2005	2,030	3,154,090	33,915	35,601	n/a	n/a	
2006	2,010	3,165,750	41,299	38,523	21.8	8.2	
2007	2,070	3,287,750	39,037	40,802	-5.5	5.9	
2008	2,120	3,383,640	42,712	40,736	9.4	-0.2	
2009	2,120	3,406,860	39,462	39,754	-7.6	-2.4	



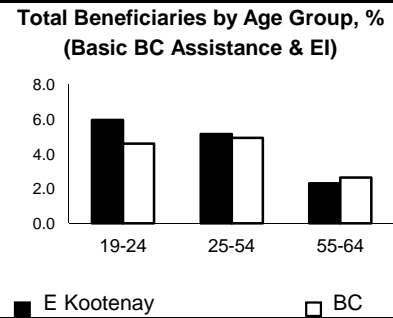
Taxation data available at: <http://www.bcstats.gov.bc.ca/data/dd/income.asp>

9	Source of Total Income 2009				% Distribution, Total Income					
	Canal Flats		BC							
	\$Thousands	% of Total	% of Total							
Employment	41,652	49.8	63.7							
Pension	15,633	18.7	13.8							
Investment	14,822	17.7	9.8							
Self-Employed	4,002	4.8	5.3							
Other	6,473	7.7	5.3							
Tax Exempt	1,077	1.3	2.0							
Total	83,659	100.0	100.0							



Source: Canada Revenue Agency. Areas are defined by postal codes and may not match municipal boundaries.

9	Dependency on the Safety Net						Total Beneficiaries by Age Group, % (Basic BC Assistance & EI)
	Percentage of Population by Age Receiving Benefits - September 2009						
	Age Group	BC Basic* Income Assistance Recipients (%)		Employment Insurance Beneficiaries (%)		Total of BC Basic Income Assistance & EI Beneficiaries (%)	
E Kootenay		BC	E Kootenay	BC	E Kootenay	BC	
Under 19	2.6	2.7					
19-24	2.3	2.1	3.9	2.6	6.0	4.6	
25-54	1.7	1.9	3.6	3.1	5.1	4.9	
55-64	0.4	0.7	1.9	2.0	2.3	2.6	
19-64	1.4	1.7	3.2	2.8	4.6	4.4	



\* On temporary assistance only. Excluded are those on Continuous Assistance, aboriginals living on reserve, seniors/OAS, & children living with relatives.

Source: BC Stats (using administrative files from the BC Ministry of Housing & Social Development, and Human Resources & Social Development Canada)

Note: EI Beneficiaries reports now include regular, fishing and employment benefits, work sharing and support measures. The reports exclude sickness, maternity and parental benefits.

10	Business Formations and Failures								
	Incorporations				Bankruptcies				
	Number		Year	Cranbrook		Kootenay DR		BC	
Canal Flats	BC	Business		Consumer	Business	Consumer	Business	Consumer	
2007	2	34,036	2005	2	62	n.a.	n.a.	786	8,168
2008	2	30,085	2006	8	46	31	224	585	7,020
2009	1	26,431	2007	1	33	14	197	470	6,651
2010	1	30,305	2008	3	36	16	180	454	7,293
2011	0	30,844	2009	1	69	9	339	380	10,639

Source: BC Ministry of Finance

Source: Office of the Superintendent of Bankruptcy, Government of Canada

Incorporations are counted in municipality of the registered office address which may differ from the actual business location.

Note: Bankruptcy is by urban postal code forward sortation area and is counted where it is filed.