

Creston Town

1	General
<p>Incorporated in 1924, Creston has a total land area of 8.48 square km (2006 Census). By highway the Town is 746 km east of Vancouver, 126 km east of Trail and 106 km southwest of Cranbrook. Creston is in the Central Kootenay Regional District.</p>	

2	Population Estimates				Age Distribution				
Annual Estimates					2011 Census			% Distribution, 2011 *	
Year	Creston	% Change Prev. Year	BC	% Change Prev. Year	Creston	Male	Female	Creston	BC
					All ages				
2007	4,988	n/a	4,309,632	n/a	0 - 14	2,475	2,835	100.0	100.0
2008	5,193	4.1	4,384,047	1.7	15 - 24	325	315	12.1	15.4
2009	5,252	1.1	4,459,947	1.7	25 - 44	260	220	9.1	12.6
2010	5,244	-0.2	4,529,647	1.6	45 - 64	395	455	16.0	26.3
2011	5,224	-0.4	4,573,321	1.0	65 +	725	850	29.6	30.0
						760	995	33.1	15.7

Source: Statistics Canada (as of July 1, includes estimate of Census undercount)

* based on published totals, both sexes

2006 Census Profiles can be found on our Website at <http://www.bcstats.gov.bc.ca/census.asp>

3	Selected Census Characteristics						
			Creston			British Columbia	
Characteristics	2001	2006	% Change	% Change	2001	2006	
Population	4,795	4,826	0.6	5.3	3,907,738	4,113,487	
Population (by citizenship)	4,670	4,680	0.2	5.3	3,868,875	4,074,385	
Non-immigrant	4,140	4,080	- 1.4	2.9	2,821,870	2,904,240	
Immigrant	530	585	10.4	10.8	1,009,820	1,119,215	
Labour force (15+ yrs.)	2,025	1,760	- 13.1	8.1	2,059,950	2,226,380	
Employees	1,670	1,455	- 12.9	9.2	1,715,600	1,873,050	
Self-employed	280	280	-	7.4	291,455	313,000	
Participation rate [ppt.=percentage points]	51.6%	43.0%	-8.6 ppt.	0.4 ppt.	65.2%	65.6%	
Unemployment rate	9.9%	6.0%	-3.9 ppt.	-2.5 ppt.	8.5%	6.0%	
Total population 25 to 64 years	2,150	2,200	2.3	6.5	2,144,050	2,284,465	
No certificate, diploma or degree	540	390	- 27.8	- 40.1	471,470	282,200	
High school certificate or equivalent	420	535	27.4	27.7	462,925	591,275	
Apprenticeship/trades certificate or diploma	435	330	- 24.1	- 7.4	295,180	273,450	
College, CEGEP or other cert. or diploma	455	605	33.0	11.3	401,760	447,005	
University certificate, diploma or degree	300	335	11.7	34.7	512,715	690,535	
Bachelor's degree	190	175	- 7.9	23.0	282,800	347,715	
Census families	1,375	1,460	6.2	6.9	1,086,030	1,161,420	
Lone-parent families	200	205	2.5	4.0	168,420	175,165	
Households	2,220	2,360	6.3	7.1	1,534,335	1,643,150	
1-family households	1,370	1,445	5.5	6.1	1,012,925	1,074,850	
Multi-family households	-	10	-	18.4	35,050	41,510	
Non-family households	845	910	7.7	8.3	486,355	526,785	
Median Income (2000 & 2005)	\$ 18,490	\$ 20,019	8.3	12.5	\$ 22,095	\$ 24,867	
Males	\$ 22,646	\$ 27,901	23.2	9.0	\$ 28,976	\$ 31,598	
Females	\$ 15,206	\$ 16,913	11.2	14.0	\$ 17,546	\$ 19,997	
Median Family Income (2000 & 2005)	\$ 43,699	\$ 47,088	7.8	20.0	\$ 54,840	\$ 65,787	
Economic Families	1,395	1,455	4.3	6.5	1,044,850	1,112,810	
2001 Incidence, low income 2006 Prevalence, low income	9.9%	15.5%	5.6 ppt.	-0.6 ppt.	13.9%	13.3%	
Unattached persons, 15+	930	955	2.7	4.7	576,825	603,880	
Incidence, low income	43.8%	32.6%	-11.2 ppt.	-1.4 ppt.	38.1%	36.7%	
Population in private hh.	4,645	4,670	0.5	5.1	3,785,270	3,978,215	
Incidence, low income	16.4%	19.3%	2.9 ppt.	-0.5 ppt.	17.8%	17.3%	
Dwellings	2,215	2,360	6.5	7.1	1,534,335	1,643,150	
Owned	1,605	1,800	12.1	12.5	1,017,485	1,145,045	
Rented	615	555	- 9.8	- 3.6	512,360	493,995	
Average gross rent	\$ 536	\$ 687	28.2	10.4	\$ 750	\$ 828	
Average owners' payments	\$ 499	\$ 574	15.0	17.1	\$ 904	\$ 1,059	
Avg. value, owned dwell.	\$ 117,438	\$ 189,801	61.6	81.5	\$ 230,645	\$ 418,703	

Source: Statistics Canada. Notes: incomes are for 2005 and 2000; rent/owner's payments are restricted to non-farm, non-reserve private dwellings.

Creston Town

4		Labour Force by Industry (NAICS)					
		Creston			BC	% Distribution, 2006	
Industry		2001	2006	% Change	% change	Creston	BC
Total labour force		2,020	1,760	- 12.9	8.1	100.0	100.0
Industry - Not applicable		70	-	- 100.0	- 26.6	-	1.5
All industries (Experienced LF)		1,950	1,750	- 10.3	8.9	99.4	98.5
111-112 Farms		35	90	157.1	5.2	5.1	1.8
113 Forestry and logging		15	45	200.0	- 10.0	2.6	1.0
114 Fishing, hunting and trapping		-	-	-	1.3	-	0.2
1151/2 Support activities for farms		-	-	-	11.3	-	0.1
1153 Support activities for forestry		-	40	-	- 21.5	2.3	0.3
21 Mining and oil and gas extraction		30	20	- 33.3	42.6	1.1	0.9
22 Utilities		10	10	-	- 3.4	0.6	0.5
23 Construction		130	125	- 3.8	39.9	7.1	7.5
31-33 Manufacturing		205	145	- 29.3	- 2.7	8.2	8.5
311 Food manufacturing		30	-	- 100.0	3.6	-	1.0
321 Wood product manufacturing		95	75	- 21.1	- 16.1	4.3	1.7
322 Paper manufacturing		-	-	-	- 13.5	-	0.6
41 Wholesale trade		40	15	- 62.5	11.6	0.9	4.1
44-45 Retail trade		295	200	- 32.2	6.9	11.4	11.2
441 Motor vehicle and parts dealers		15	-	- 100.0	9.0	-	1.1
445 Food and beverage stores		140	60	- 57.1	8.4	3.4	2.9
448 Clothing & clothing accessories		10	25	150.0	9.2	1.4	1.1
452 General merchandise stores		25	25	-	6.5	1.4	1.2
48-49 Transportation & warehousing		65	25	- 61.5	0.6	1.4	5.2
51 Information and cultural industries		20	10	- 50.0	- 5.3	0.6	2.6
52 Finance and insurance		75	85	13.3	4.5	4.8	3.8
53 Real estate & rental/leasing		20	15	- 25.0	22.1	0.9	2.3
54 Prof'sonal, scientific & tech. serv.		40	70	75.0	18.6	4.0	7.3
55 Mgmt. of companies/ent'prises		-	-	-	126.6	-	0.1
56 Admin+support, waste mgmnt srv.		65	70	7.7	20.4	4.0	4.4
61 Educational services		115	150	30.4	9.2	8.5	6.9
62 Health care and social assistance		310	365	17.7	6.5	20.7	9.6
71 Arts, entertainment and recreation		60	35	- 41.7	11.3	2.0	2.3
72 Accommodation and food services		195	125	- 35.9	7.7	7.1	8.1
721 Accommodation services		40	70	75.0	2.5	4.0	1.7
722 Food services & drinking places		155	55	- 64.5	9.2	3.1	6.4
81 Other services (excl. public admin.)		130	60	- 53.8	11.8	3.4	4.9
91 Public administration		115	55	- 52.2	- 2.0	3.1	5.0
Special Aggregations	Agriculture, Food and Beverage	120	155	29.2	5.8	8.8	2.9
	Fishing and Fish Processing	-	-	-	- 3.3	-	0.5
	Logging and Forest Products	115	155	34.8	- 14.7	8.8	3.7
	Mining and Mineral Products	40	20	- 50.0	17.1	1.1	2.1

Source: Statistics Canada. Industry according to NAICS version used in each census. Unpublished data.

5		Business Locations- Number of Firms by Employment Size Range								
		Firms with no employees		Firms with employees		% change		C Kootenay RD		
		C Kootenay RD	BC	C Kootenay RI	BC	C Kootenay RD	1 to 19	20 to 49	50-199	200 Plus
2008		2,189	185,879	2,502	175,003	-	2,293	134	63	12
2009		2,138	186,541	2,367	176,124	- 5.4	2,170	123	61	13
2010		2,233	194,349	2,408	175,913	1.7	2,204	128	64	12
2011		2,164	195,290	2,381	173,589	- 1.1	2,194	119	58	10

Source: Business Register, Statistics Canada. In some areas, boundary changes/geocoding changes may cause large changes.

6		Municipal Residential Taxes and Charges on a Representative House					
		Creston					
		House Value		Taxes & Charges			
Year	\$	% change	\$	% change			
2008	199,253		2,539				
2009	201,465	1.1	2,625	3.4			
2010	207,784	3.1	2,710	3.2			
2011	214,358	3.2	2,802	3.4			
2012	219,252	2.3	2,906	3.7			

Source: Ministry of Community, Sport & Cultural Development http://www.cd.gov.bc.ca/lgd/infra/statistics_index.htm (No RD level figures)

Creston Town

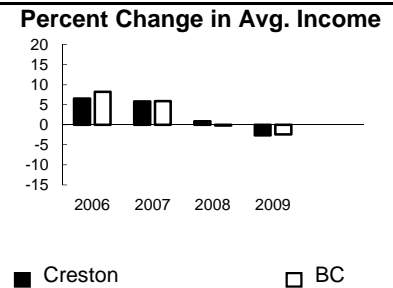
7	Values of Building Permits									
	Residential				Non-Residential			Total		Year
	Number of Units		Value \$'000		Value \$'000			Value \$'000		
Creston	BC	Creston	BC	Creston	BC	Creston	BC			
2007	48	40,932	10,233	8,611,723	5,426	3,932,968	15,659	12,544,691	2007	
2008	41	30,110	8,954	6,899,289	5,990	3,677,866	14,944	10,577,155	2008	
2009	26	18,607	4,684	4,491,075	538	3,138,810	5,222	7,629,885	2009	
2010	57	28,984	8,891	6,705,888	3,077	3,017,921	11,968	9,723,809	2010	
2011	8	25,745	2,339	6,113,406	8,843	3,136,361	11,182	9,249,767	2011	

Source: Statistics Canada

Note: Detailed non-residential permits data can be found on our Website: www.bcstats.gov.bc.ca

A dash can indicate a nil report, a value of less than \$500, or non-reporting. P indicates 'preliminary'.

8	Personal Taxation Statistics						Percent Change in Avg. Income	
	Total Income of All Returns							
	All Returns (number)		Average Income (\$)		% Change avg. income			
Year	Creston	BC	Creston	BC	Creston	BC		
2005	6,700	3,154,090	27,649	35,601	n/a	n/a		
2006	6,700	3,165,750	29,457	38,523	6.5	8.2		
2007	7,150	3,287,750	31,180	40,802	5.8	5.9		
2008	7,730	3,383,640	31,438	40,736	0.8	-0.2		
2009	7,830	3,406,860	30,600	39,754	-2.7	-2.4		



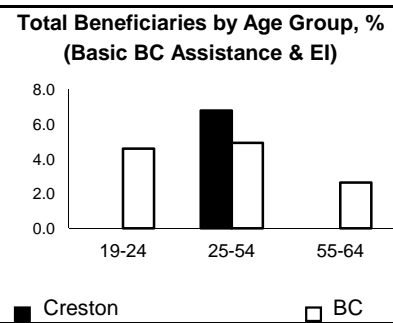
Taxation data available at: <http://www.bcstats.gov.bc.ca/data/dd/income.asp>

9	Source of Total Income 2009				% Distribution, Total Income					
	Creston		BC							
	\$Thousands	% of Total	% of Total							
Employment	118,095	49.3	63.7							
Pension	66,815	27.9	13.8							
Investment	20,636	8.6	9.8							
Self-Employed	9,600	4.0	5.3							
Other	15,575	6.5	5.3							
Tax Exempt	8,862	3.7	2.0							
Total	239,595	100.0	100.0							



Source: Canada Revenue Agency. Areas are defined by postal codes and may not match municipal boundaries.

9	Dependency on the Safety Net						Total Beneficiaries by Age Group, % (Basic BC Assistance & EI)		
	Percentage of Population by Age Receiving Benefits - September 2009								
	Age Group	BC Basic* Income Assistance Recipients (%)		Employment Insurance Beneficiaries (%)		Total of BC Basic Income Assistance & EI Beneficiaries (%)			
Creston		BC	Creston	BC	Creston	BC			
Under 19	6.4	2.7							
19-24	-	2.1	8.5	2.6	-	4.6			
25-54	3.5	1.9	3.8	3.1	6.8	4.9			
55-64	-	0.7	2.2	2.0	-	2.6			
19-64	2.7	1.7	3.7	2.8	6.1	4.4			



* On temporary assistance only. Excluded are those on Continuous Assistance, aboriginals living on reserve, seniors/OAS, & children living with relatives.

Source: BC Stats (using administrative files from the BC Ministry of Housing & Social Development, and Human Resources & Social Development Canada)

Note: EI Beneficiaries reports now include regular, fishing and employment benefits, work sharing and support measures. The reports exclude sickness, maternity and parental benefits.

10	Business Formations and Failures								
	Incorporations			Bankruptcies					
	Number		Year	Cranbrook		Kootenay DR		BC	
Creston	BC	Business		Consumer	Business	Consumer	Business	Consumer	
2007	31	34,036	2005	2	62	n.a.	n.a.	786	8,168
2008	31	30,085	2006	8	46	31	224	585	7,020
2009	23	26,431	2007	1	33	14	197	470	6,651
2010	17	30,305	2008	3	36	16	180	454	7,293
2011	8	30,844	2009	1	69	9	339	380	10,639

Source: BC Ministry of Finance

Source: Office of the Superintendent of Bankruptcy, Government of Canada

Incorporations are counted in municipality of the registered office address which may differ from the actual business location.

Note: Bankruptcy is by urban postal code forward sortation area and is counted where it is filed.