

## Invermere District Municipality

1	General
<p>Incorporated in 1951, Invermere has a total land area of 10.18 square km (2006 Census). By highway the District is 129 km north of Cranbrook, 123 km southeast of Golden and 280 km west of Calgary. Invermere is in the East Kootenay Regional District.</p>	

2					Population Estimates					Age Distribution				
Annual Estimates										2011 Census			% Distribution, 2011 *	
Year	Invermere	% Change Prev. Year	BC	% Change Prev. Year	Invermere	Male	Female	Invermere	BC					
					All ages	1,380	1,575	100.0	100.0					
2007	3,184	n/a	4,309,632	n/a	0 - 14	215	240	15.4	15.4					
2008	3,465	8.8	4,384,047	1.7	15 - 24	160	175	11.2	12.6					
2009	3,672	6.0	4,459,947	1.7	25 - 44	320	345	22.5	26.3					
2010	3,617	-1.5	4,529,647	1.6	45 - 64	445	465	30.6	30.0					
2011	3,653	1.0	4,573,321	1.0	65 +	245	355	20.1	15.7					

Source: Statistics Canada (as of July 1, includes estimate of Census undercount)

\* based on published totals, both sexes

**2006 Census Profiles can be found on our Website at <http://www.bcstats.gov.bc.ca/census.asp>**

3								Selected Census Characteristics			
				Invermere			British Columbia				
Characteristics				2001	2006	% Change	% Change	2001	2006		
Population				2,858	3,002	5.0	5.3	3,907,738	4,113,487		
Population (by citizenship)				2,825	2,890	2.3	5.3	3,868,875	4,074,385		
Non-immigrant				2,485	2,575	3.6	2.9	2,821,870	2,904,240		
Immigrant				335	300	-10.4	10.8	1,009,820	1,119,215		
Labour force (15+ yrs.)				1,665	1,720	3.3	8.1	2,059,950	2,226,380		
Employees				1,295	1,385	6.9	9.2	1,715,600	1,873,050		
Self-employed				370	320	-13.5	7.4	291,455	313,000		
Participation rate [ppt.=percentage points]				72.7%	72.8%	0.1 ppt.	0.4 ppt.	65.2%	65.6%		
Unemployment rate				4.2%	3.2%	-1.0 ppt.	-2.5 ppt.	8.5%	6.0%		
Total population 25 to 64 years				1,460	1,695	16.1	6.5	2,144,050	2,284,465		
No certificate, diploma or degree				325	130	-60.0	-40.1	471,470	282,200		
High school certificate or equivalent				260	455	75.0	27.7	462,925	591,275		
Apprenticeship/trades certificate or diploma				285	180	-36.8	-7.4	295,180	273,450		
College, CEGEP or other cert. or diploma				315	545	73.0	11.3	401,760	447,005		
University certificate, diploma or degree				285	380	33.3	34.7	512,715	690,535		
Bachelor's degree				180	235	30.6	23.0	282,800	347,715		
Census families				800	840	5.0	6.9	1,086,030	1,161,420		
Lone-parent families				140	105	-25.0	4.0	168,420	175,165		
Households				1,130	1,195	5.8	7.1	1,534,335	1,643,150		
1-family households				795	820	3.1	6.1	1,012,925	1,074,850		
Multi-family households				-	10	-	18.4	35,050	41,510		
Non-family households				335	365	9.0	8.3	486,355	526,785		
Median Income (2000 & 2005)				\$ 23,066	\$ 26,995	17.0	12.5	\$ 22,095	\$ 24,867		
Males				\$ 26,889	\$ 34,931	29.9	9.0	\$ 28,976	\$ 31,598		
Females				\$ 21,099	\$ 23,053	9.3	14.0	\$ 17,546	\$ 19,997		
Median Family Income (2000 & 2005)				\$ 57,337	\$ 72,181	25.9	20.0	\$ 54,840	\$ 65,787		
Economic Families				805	845	5.0	6.5	1,044,850	1,112,810		
2001 Incidence, low income    2006 Prevalence, low income				6.6%	7.1%	0.5 ppt.	-0.6 ppt.	13.9%	13.3%		
Unattached persons, 15+				445	440	-1.1	4.7	576,825	603,880		
Incidence, low income				25.0%	28.4%	3.4 ppt.	-1.4 ppt.	38.1%	36.7%		
Population in private hh.				2,830	2,885	1.9	5.1	3,785,270	3,978,215		
Incidence, low income				9.8%	9.0%	-0.8 ppt.	-0.5 ppt.	17.8%	17.3%		
Dwellings				1,130	1,195	5.8	7.1	1,534,335	1,643,150		
Owned				835	925	10.8	12.5	1,017,485	1,145,045		
Rented				300	270	-10.0	-3.6	512,360	493,995		
Average gross rent				\$ 650	\$ 723	11.2	10.4	\$ 750	\$ 828		
Average owners' payments				\$ 795	\$ 936	17.7	17.1	\$ 904	\$ 1,059		
Avg. value, owned dwell.				\$ 185,318	\$ 365,285	97.1	81.5	\$ 230,645	\$ 418,703		

Source: Statistics Canada. Notes: incomes are for 2005 and 2000; rent/owner's payments are restricted to non-farm, non-reserve private dwellings.

## Invermere District Municipality

4		Labour Force by Industry (NAICS)					
		Invermere			BC	% Distribution, 2006	
Industry		2001	2006	% Change	% change	Invermere	BC
Total labour force		1,665	1,720	3.3	8.1	100.0	100.0
Industry - Not applicable		-	15	-	-26.6	0.9	1.5
<b>All industries (Experienced LF)</b>		1,665	1,710	2.7	8.9	99.4	98.5
111-112 Farms		20	-	-100.0	5.2	-	1.8
113 Forestry and logging		45	25	-44.4	-10.0	1.5	1.0
114 Fishing, hunting and trapping		-	10	-	1.3	0.6	0.2
1151/2 Support activities for farms		-	-	-	11.3	-	0.1
1153 Support activities for forestry		50	10	-80.0	-21.5	0.6	0.3
21 Mining and oil and gas extraction		25	30	20.0	42.6	1.7	0.9
22 Utilities		10	15	50.0	-3.4	0.9	0.5
23 Construction		190	210	10.5	39.9	12.2	7.5
31-33 Manufacturing		65	100	53.8	-2.7	5.8	8.5
311 Food manufacturing		-	20	-	3.6	1.2	1.0
321 Wood product manufacturing		30	35	16.7	-16.1	2.0	1.7
322 Paper manufacturing		-	-	-	-13.5	-	0.6
41 Wholesale trade		25	50	100.0	11.6	2.9	4.1
44-45 Retail trade		185	195	5.4	6.9	11.3	11.2
441 Motor vehicle and parts dealers		10	-	-100.0	9.0	-	1.1
445 Food and beverage stores		35	35	-	8.4	2.0	2.9
448 Clothing & clothing accessories		25	-	-100.0	9.2	-	1.1
452 General merchandise stores		10	20	100.0	6.5	1.2	1.2
48-49 Transportation & warehousing		50	15	-70.0	0.6	0.9	5.2
51 Information and cultural industries		20	35	75.0	-5.3	2.0	2.6
52 Finance and insurance		50	35	-30.0	4.5	2.0	3.8
53 Real estate & rental/leasing		10	70	600.0	22.1	4.1	2.3
54 Prof'sonal, scientific & tech. serv.		65	100	53.8	18.6	5.8	7.3
55 Mgmt. of companies/ent'prises		-	-	-	126.6	-	0.1
56 Admin+support, waste mgmnt srv.		25	50	100.0	20.4	2.9	4.4
61 Educational services		150	110	-26.7	9.2	6.4	6.9
62 Health care and social assistance		100	110	10.0	6.5	6.4	9.6
71 Arts, entertainment and recreation		135	165	22.2	11.3	9.6	2.3
72 Accommodation and food services		270	190	-29.6	7.7	11.0	8.1
721 Accommodation services		55	95	72.7	2.5	5.5	1.7
722 Food services & drinking places		210	95	-54.8	9.2	5.5	6.4
81 Other services (excl. public admin.)		90	90	-	11.8	5.2	4.9
91 Public administration		60	90	50.0	-2.0	5.2	5.0
Special Aggregations	Agriculture, Food and Beverage	20	25	25.0	5.8	1.5	2.9
	Fishing and Fish Processing	-	10	-	-3.3	0.6	0.5
	Logging and Forest Products	125	65	-48.0	-14.7	3.8	3.7
	Mining and Mineral Products	50	60	20.0	17.1	3.5	2.1

Source: Statistics Canada. Industry according to NAICS version used in each census. Unpublished data.

5		Business Locations- Number of Firms by Employment Size Range								
		Firms with no employees		Firms with employees		% change	E kootenay RD			
		E kootenay RD	BC	E kootenay RD	BC	E kootenay RD	1 to 19	20 to 49	50-199	200 Plus
2008		1,974	185,879	2,397	175,003	-	2,109	182	85	21
2009		2,048	186,541	2,459	176,124	2.6	2,169	198	73	19
2010		2,250	194,349	2,708	175,913	10.1	2,407	208	75	18
2011		2,231	195,290	2,662	173,589	-1.7	2,376	195	75	16

Source: Business Register, Statistics Canada. In some areas, boundary changes/geocoding changes may cause large changes.

6		Municipal Residential Taxes and Charges on a Representative House					
		Invermere					
Year	House Value		Taxes & Charges		Index (2008=100.0)		
	\$	% change	\$	% change			
2008	439,909		3,601		100	100	
2009	450,244	2.3	3,714	3.2	102	92	
2010	405,556	-9.9	3,606	-2.9	92	95	
2011	423,549	4.4	3,582	-0.7	95	92	
2012	404,058	-4.6	3,640	1.6	92	95	

Source: Ministry of Community, Sport & Cultural Development [http://www.cd.gov.bc.ca/lgd/infra/statistics\\_index.htm](http://www.cd.gov.bc.ca/lgd/infra/statistics_index.htm) (No RD level figures)

## Invermere District Municipality

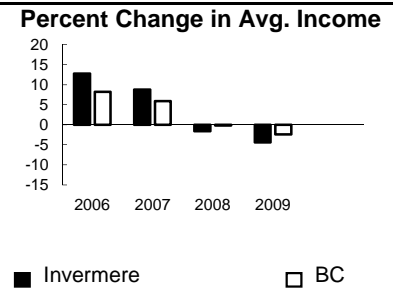
7	Values of Building Permits									
	Residential					Non-Residential		Total		Year
	Number of Units		Value \$'000			Value \$'000		Value \$'000		
Invermere	BC	Invermere	BC	Invermere	BC	Invermere	BC			
2007	233	40,932	43,967	8,611,723	3,652	3,932,968	47,619	12,544,691	2007	
2008	152	30,110	44,642	6,899,289	976	3,677,866	45,618	10,577,155	2008	
2009	16	18,607	5,838	4,491,075	7,556	3,138,810	13,394	7,629,885	2009	
2010	19	28,984	6,897	6,705,888	988	3,017,921	7,885	9,723,809	2010	
2011	6	25,745	3,299	6,113,406	525	3,136,361	3,824	9,249,767	2011	

Source: Statistics Canada

Note: Detailed non-residential permits data can be found on our Website: www.bcstats.gov.bc.ca

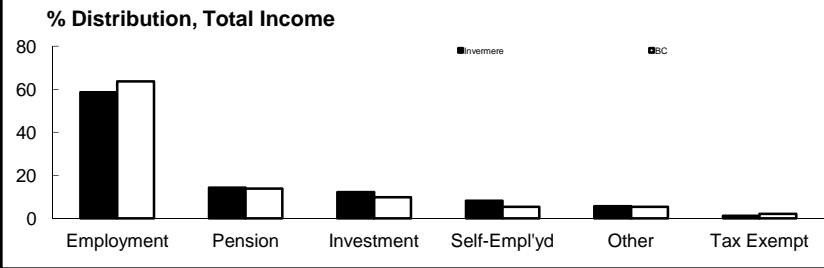
A dash can indicate a nil report, a value of less than \$500, or non-reporting. P indicates 'preliminary'.

8	Personal Taxation Statistics						Percent Change in Avg. Income	
	Total Income of All Returns							
	All Returns (number)		Average Income (\$)		% Change avg. income			
Year	Invermere	BC	Invermere	BC	Invermere	BC		
2005	3,610	3,154,090	34,715	35,601	n/a	n/a		
2006	3,620	3,165,750	39,135	38,523	12.7	8.2		
2007	3,770	3,287,750	42,570	40,802	8.8	5.9		
2008	3,800	3,383,640	41,866	40,736	-1.7	-0.2		
2009	3,790	3,406,860	40,022	39,754	-4.4	-2.4		



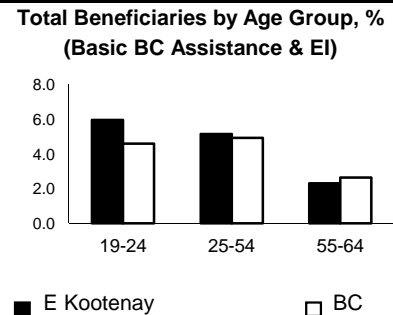
Taxation data available at: <http://www.bcstats.gov.bc.ca/data/dd/income.asp>

Source of Total Income 2009				% Distribution, Total Income					
	Invermere		BC						
	\$Thousands	% of Total	% of Total						
Employment	89,013	58.7	63.7						
Pension	21,631	14.3	13.8						
Investment	18,507	12.2	9.8						
Self-Employed	12,286	8.1	5.3						
Other	8,467	5.6	5.3						
Tax Exempt	1,776	1.2	2.0						
Total	151,682	100.0	100.0						



Source: Canada Revenue Agency. Areas are defined by postal codes and may not match municipal boundaries.

9	Dependency on the Safety Net						Total Beneficiaries by Age Group, % (Basic BC Assistance & EI)		
	Percentage of Population by Age Receiving Benefits - September 2009								
	Age Group	BC Basic* Income Assistance Recipients (%)		Employment Insurance Beneficiaries (%)		Total of BC Basic Income Assistance & EI Beneficiaries (%)			
E Kootenay		BC	E Kootenay	BC	E Kootenay	BC			
Under 19	2.6	2.7							
19-24	2.3	2.1	3.9	2.6	6.0	4.6			
25-54	1.7	1.9	3.6	3.1	5.1	4.9			
55-64	0.4	0.7	1.9	2.0	2.3	2.6			
19-64	1.4	1.7	3.2	2.8	4.6	4.4			



\* On temporary assistance only. Excluded are those on Continuous Assistance, aboriginals living on reserve, seniors/OAS, & children living with relatives.

Source: BC Stats (using administrative files from the BC Ministry of Housing & Social Development, and Human Resources & Social Development Canada)

Note: EI Beneficiaries reports now include regular, fishing and employment benefits, work sharing and support measures. The reports exclude sickness, maternity and parental benefits.

10	Business Formations and Failures								
	Incorporations				Bankruptcies				
	Number		Year	Cranbrook		Kootenay DR		BC	
Invermere	BC	Business		Consumer	Business	Consumer	Business	Consumer	
2007	70	34,036	2005	2	62	n.a.	n.a.	786	8,168
2008	64	30,085	2006	8	46	31	224	585	7,020
2009	28	26,431	2007	1	33	14	197	470	6,651
2010	35	30,305	2008	3	36	16	180	454	7,293
2011	31	30,844	2009	1	69	9	339	380	10,639

Source: BC Ministry of Finance

Source: Office of the Superintendent of Bankruptcy, Government of Canada

Incorporations are counted in municipality of the registered office address which may differ from the actual business location.

Note: Bankruptcy is by urban postal code forward sortation area and is counted where it is filed.