

Kimberley City

1	General
<p>Incorporated in 1944, Kimberley has a total land area of 58.31 square km (2006 Census). By highway the City is 32 km northwest of Cranbrook. Kimberley is in the East Kootenay Regional District.</p>	

2	Population Estimates				Age Distribution				
Annual Estimates					2011 Census			% Distribution, 2011 *	
Year	Kimberley	% Change Prev. Year	BC	% Change Prev. Year	Kimberley	Male	Female	Kimberley	BC
2007	6,323	n/a	4,309,632	n/a	All ages	3,290	3,360	100.0	100.0
2008	6,523	3.2	4,384,047	1.7	0 - 14	515	500	15.3	15.4
2009	6,713	2.9	4,459,947	1.7	15 - 24	310	295	9.1	12.6
2010	6,646	-1.0	4,529,647	1.6	25 - 44	800	805	24.3	26.3
2011	6,683	0.6	4,573,321	1.0	45 - 64	1,035	1,010	30.7	30.0
					65 +	640	740	20.7	15.7

Source: Statistics Canada (as of July 1, includes estimate of Census undercount)

* based on published totals, both sexes

2006 Census Profiles can be found on our Website at <http://www.bcstats.gov.bc.ca/census.asp>

3	Selected Census Characteristics						
			Kimberley			British Columbia	
Characteristics	2001	2006	% Change	% Change	2001	2006	
Population	6,484	6,139	- 5.3	5.3	3,907,738	4,113,487	
Population (by citizenship)	6,390	6,040	- 5.5	5.3	3,868,875	4,074,385	
Non-immigrant	5,745	5,345	- 7.0	2.9	2,821,870	2,904,240	
Immigrant	625	680	8.8	10.8	1,009,820	1,119,215	
Labour force (15+ yrs.)	3,245	3,255	0.3	8.1	2,059,950	2,226,380	
Employees	2,825	2,695	- 4.6	9.2	1,715,600	1,873,050	
Self-employed	375	515	37.3	7.4	291,455	313,000	
Participation rate [ppt.=percentage points]	60.4%	62.7%	2.3 ppt.	0.4 ppt.	65.2%	65.6%	
Unemployment rate	10.3%	6.6%	-3.7 ppt.	-2.5 ppt.	8.5%	6.0%	
Total population 25 to 64 years	3,405	3,375	- 0.9	6.5	2,144,050	2,284,465	
No certificate, diploma or degree	755	400	- 47.0	- 40.1	471,470	282,200	
High school certificate or equivalent	580	1,005	73.3	27.7	462,925	591,275	
Apprenticeship/trades certificate or diploma	645	545	- 15.5	- 7.4	295,180	273,450	
College, CEGEP or other cert. or diploma	865	770	- 11.0	11.3	401,760	447,005	
University certificate, diploma or degree	560	655	17.0	34.7	512,715	690,535	
Bachelor's degree	365	275	- 24.7	23.0	282,800	347,715	
Census families	1,905	1,865	- 2.1	6.9	1,086,030	1,161,420	
Lone-parent families	245	240	- 2.0	4.0	168,420	175,165	
Households	2,900	2,825	- 2.6	7.1	1,534,335	1,643,150	
1-family households	1,880	1,840	- 2.1	6.1	1,012,925	1,074,850	
Multi-family households	10	10	-	18.4	35,050	41,510	
Non-family households	1,005	980	- 2.5	8.3	486,355	526,785	
Median Income (2000 & 2005)	\$ 23,449	\$ 22,253	- 5.1	12.5	\$ 22,095	\$ 24,867	
Males	\$ 31,539	\$ 30,956	- 1.8	9.0	\$ 28,976	\$ 31,598	
Females	\$ 15,599	\$ 17,451	11.9	14.0	\$ 17,546	\$ 19,997	
Median Family Income (2000 & 2005)	\$ 51,595	\$ 54,345	5.3	20.0	\$ 54,840	\$ 65,787	
Economic Families	1,900	1,855	- 2.4	6.5	1,044,850	1,112,810	
2001 Incidence, low income 2006 Prevalence, low income	8.5%	10.2%	1.7 ppt.	-0.6 ppt.	13.9%	13.3%	
Unattached persons, 15+	1,155	1,070	- 7.4	4.7	576,825	603,880	
Incidence, low income	31.0%	31.3%	0.3 ppt.	-1.4 ppt.	38.1%	36.7%	
Population in private hh.	6,385	6,030	- 5.6	5.1	3,785,270	3,978,215	
Incidence, low income	12.8%	15.9%	3.1 ppt.	-0.5 ppt.	17.8%	17.3%	
Dwellings	2,900	2,825	- 2.6	7.1	1,534,335	1,643,150	
Owned	2,345	2,155	- 8.1	12.5	1,017,485	1,145,045	
Rented	555	670	20.7	- 3.6	512,360	493,995	
Average gross rent	\$ 568	\$ 591	4.0	10.4	\$ 750	\$ 828	
Average owners' payments	\$ 608	\$ 713	17.3	17.1	\$ 904	\$ 1,059	
Avg. value, owned dwell.	\$ 109,756	\$ 192,930	75.8	81.5	\$ 230,645	\$ 418,703	

Source: Statistics Canada. Notes: incomes are for 2005 and 2000; rent/owner's payments are restricted to non-farm, non-reserve private dwellings.

Kimberley City

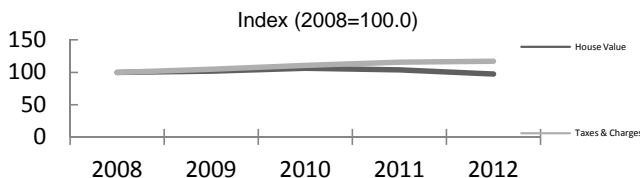
4		Labour Force by Industry (NAICS)					
		Kimberley			BC	% Distribution, 2006	
Industry	2001	2006	% Change	% change	Kimberley	BC	
Total labour force	3,250	3,255	0.2	8.1	100.0	100.0	
Industry - Not applicable	30	20	- 33.3	- 26.6	0.6	1.5	
All industries (Experienced LF)	3,220	3,230	0.3	8.9	99.2	98.5	
111-112 Farms	10	25	150.0	5.2	0.8	1.8	
113 Forestry and logging	30	20	- 33.3	- 10.0	0.6	1.0	
114 Fishing, hunting and trapping	-	-	-	1.3	-	0.2	
1151/2 Support activities for farms	-	-	-	11.3	-	0.1	
1153 Support activities for forestry	30	20	- 33.3	- 21.5	0.6	0.3	
21 Mining and oil and gas extraction	365	135	- 63.0	42.6	4.1	0.9	
22 Utilities	15	10	- 33.3	- 3.4	0.3	0.5	
23 Construction	260	345	32.7	39.9	10.6	7.5	
31-33 Manufacturing	175	195	11.4	- 2.7	6.0	8.5	
311 Food manufacturing	-	-	-	3.6	-	1.0	
321 Wood product manufacturing	45	60	33.3	- 16.1	1.8	1.7	
322 Paper manufacturing	90	95	5.6	- 13.5	2.9	0.6	
41 Wholesale trade	45	75	66.7	11.6	2.3	4.1	
44-45 Retail trade	340	325	- 4.4	6.9	10.0	11.2	
441 Motor vehicle and parts dealers	65	60	- 7.7	9.0	1.8	1.1	
445 Food and beverage stores	95	100	5.3	8.4	3.1	2.9	
448 Clothing & clothing accessories	-	25	-	9.2	0.8	1.1	
452 General merchandise stores	30	30	-	6.5	0.9	1.2	
48-49 Transportation & warehousing	140	105	- 25.0	0.6	3.2	5.2	
51 Information and cultural industries	10	40	300.0	- 5.3	1.2	2.6	
52 Finance and insurance	80	110	37.5	4.5	3.4	3.8	
53 Real estate & rental/leasing	40	35	- 12.5	22.1	1.1	2.3	
54 Prof'sonal, scientific & tech. serv.	80	100	25.0	18.6	3.1	7.3	
55 Mgmt. of companies/ent'prises	10	-	- 100.0	126.6	-	0.1	
56 Admin+support, waste mgmnt srv.	50	135	170.0	20.4	4.1	4.4	
61 Educational services	245	220	- 10.2	9.2	6.8	6.9	
62 Health care and social assistance	335	390	16.4	6.5	12.0	9.6	
71 Arts, entertainment and recreation	180	210	16.7	11.3	6.5	2.3	
72 Accommodation and food services	405	365	- 9.9	7.7	11.2	8.1	
721 Accommodation services	140	155	10.7	2.5	4.8	1.7	
722 Food services & drinking places	265	210	- 20.8	9.2	6.5	6.4	
81 Other services (excl. public admin.)	195	190	- 2.6	11.8	5.8	4.9	
91 Public administration	170	170	-	- 2.0	5.2	5.0	
Special Aggregations							
Agriculture, Food and Beverage	25	30	20.0	5.8	0.9	2.9	
Fishing and Fish Processing	-	-	-	- 3.3	-	0.5	
Logging and Forest Products	200	195	- 2.5	- 14.7	6.0	3.7	
Mining and Mineral Products	375	160	- 57.3	17.1	4.9	2.1	

Source: Statistics Canada. Industry according to NAICS version used in each census. Unpublished data.

5		Business Locations- Number of Firms by Employment Size Range							
	Firms with no employees		Firms with employees		% change	Cranbrook CA			
	Cranbrook CA	BC	Cranbrook CA	BC		Cranbrook CA	1 to 19	20 to 49	50-199
2008	898	185,879	1,148	175,003	-	999	100	40	9
2009	921	186,541	1,174	176,124	2.3	1,029	103	31	11
2010	923	194,349	1,178	175,913	0.3	1,027	109	32	10
2011	921	195,290	1,167	173,589	- 0.9	1,019	103	36	9

Source: Business Register, Statistics Canada. In some areas, boundary changes/geocoding changes may cause large changes.

6		Municipal Residential Taxes and Charges on a Representative House				
		Kimberley				
Year	House Value		Taxes & Charges			
	\$	% change	\$	% change		
2008	245,887		2,839			
2009	250,363	1.8	2,973	4.7		
2010	261,564	4.5	3,143	5.7		
2011	255,528	-2.3	3,283	4.5		
2012	239,310	-6.3	3,329	1.4		



Source: Ministry of Community, Sport & Cultural Development http://www.cd.gov.bc.ca/lgd/infra/statistics_index.htm (No RD level figures)

Kimberley City

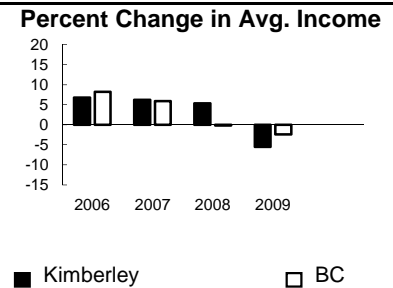
7	Values of Building Permits								
	Residential				Non-Residential		Total		Year
	Number of Units		Value \$'000		Value \$'000		Value \$'000		
Kimberley	BC	Kimberley	BC	Kimberley	BC	Kimberley	BC		
2007	116	40,932	28,170	8,611,723	18,651	3,932,968	46,821	12,544,691	2007
2008	50	30,110	14,860	6,899,289	979	3,677,866	15,839	10,577,155	2008
2009	17	18,607	7,010	4,491,075	6,765	3,138,810	13,775	7,629,885	2009
2010	25	28,984	6,616	6,705,888	2,187	3,017,921	8,803	9,723,809	2010
2011	13	25,745	4,903	6,113,406	199	3,136,361	5,102	9,249,767	2011

Source: Statistics Canada

Note: Detailed non-residential permits data can be found on our Website: www.bcstats.gov.bc.ca

A dash can indicate a nil report, a value of less than \$500, or non-reporting. P indicates 'preliminary'.

8	Personal Taxation Statistics					Percent Change in Avg. Income	
	Total Income of All Returns						
	All Returns (number)		Average Income (\$)		% Change avg. income		
Year	Kimberley	BC	Kimberley	BC	Kimberley	BC	
2005	5,730	3,154,090	31,809	35,601	n/a	n/a	
2006	5,720	3,165,750	33,971	38,523	6.8	8.2	
2007	6,040	3,287,750	36,067	40,802	6.2	5.9	
2008	6,130	3,383,640	37,992	40,736	5.3	-0.2	
2009	6,110	3,406,860	35,897	39,754	-5.5	-2.4	



Taxation data available at: <http://www.bcstats.gov.bc.ca/data/dd/income.asp>

Source of Total Income 2009				% Distribution, Total Income					
	Kimberley		BC	Employment	Pension	Investment	Self-Emply'd	Other	Tax Exempt
	\$Thousands	% of Total	% of Total						
Employment	128,074	58.4	63.7	60	65	5	5	5	5
Pension	50,761	23.1	13.8	25	15	5	5	5	5
Investment	11,720	5.3	9.8	5	5	5	5	5	5
Self-Employed	8,700	4.0	5.3	5	5	5	5	5	5
Other	14,887	6.8	5.3	5	5	5	5	5	5
Tax Exempt	5,186	2.4	2.0	5	5	5	5	5	5
Total	219,328	100.0	100.0						

Source: Canada Revenue Agency. Areas are defined by postal codes and may not match municipal boundaries.

9	Dependency on the Safety Net						Total Beneficiaries by Age Group, % (Basic BC Assistance & EI)		
	Percentage of Population by Age Receiving Benefits - September 2009								
	Age Group	BC Basic* Income Assistance Recipients (%)		Employment Insurance Beneficiaries (%)		Total of BC Basic Income Assistance & EI Beneficiaries (%)		19-24	25-54
Kimberley		BC	Kimberley	BC	Kimberley	BC			
Under 19	2.7	2.7	-	-	-	-	4.5	5.5	2.5
19-24	-	2.1	6.2	2.6	-	4.6			
25-54	1.8	1.9	4.0	3.1	5.6	4.9			
55-64	-	0.7	2.4	2.0	-	2.6			
19-64	1.5	1.7	3.8	2.8	5.1	4.4			

* On temporary assistance only. Excluded are those on Continuous Assistance, aboriginals living on reserve, seniors/OAS, & children living with relatives.

Source: BC Stats (using administrative files from the BC Ministry of Housing & Social Development, and Human Resources & Social Development Canada)

Note: EI Beneficiaries reports now include regular, fishing and employment benefits, work sharing and support measures. The reports exclude sickness, maternity and parental benefits.

10	Business Formations and Failures								
	Incorporations			Bankruptcies					
	Number		Year	Kimberley		Kootenay DR		BC	
Kimberley	BC	Business		Consumer	Business	Consumer	Business	Consumer	
2007	30	34,036	2005	1	19	n.a.	n.a.	786	8,168
2008	21	30,085	2006	2	10	31	224	585	7,020
2009	19	26,431	2007	1	11	14	197	470	6,651
2010	23	30,305	2008	0	8	16	180	454	7,293
2011	37	30,844	2009	1	20	9	339	380	10,639

Source: BC Ministry of Finance

Source: Office of the Superintendent of Bankruptcy, Government of Canada

Incorporations are counted in municipality of the registered office address which may differ from the actual business location.

Note: Bankruptcy is by urban postal code forward sortation area and is counted where it is filed.