

Midway Village

1	General
<p>Incorporated in 1967, Midway has a total land area of 12.16 square km (2006 Census). By highway the Village is 13 km west of Greenwood and 51 km east of Osoyoos. Midway is in the Kootenay-Boundary Regional District.</p>	

2					Population Estimates	Age Distribution				
Annual Estimates					2011 Census			% Distribution, 2011 *		
Year	Midway	% Change Prev. Year	BC	% Change Prev. Year	Midway	Male	Female	Midway	BC	
					All ages	330	345	100.0	100.0	
2007	643	n/a	4,309,632	n/a	0 - 14	35	30	9.6	15.4	
2008	662	3.0	4,384,047	1.7	15 - 24	25	25	7.4	12.6	
2009	658	-0.6	4,459,947	1.7	25 - 44	35	45	11.9	26.3	
2010	663	0.8	4,529,647	1.6	45 - 64	110	130	35.6	30.0	
2011	669	0.9	4,573,321	1.0	65 +	120	110	34.1	15.7	

Source: Statistics Canada (as of July 1, includes estimate of Census undercount)

* based on published totals, both sexes

2006 Census Profiles can be found on our Website at <http://www.bcstats.gov.bc.ca/census.asp>

3							Selected Census Characteristics	
Characteristics			Midway			British Columbia		
			2001	2006	% Change	% Change	2001	2006
Population			638	621	- 2.7	5.3	3,907,738	4,113,487
Population (by citizenship)			625	600	- 4.0	5.3	3,868,875	4,074,385
Non-immigrant			585	560	- 4.3	2.9	2,821,870	2,904,240
Immigrant			45	40	- 11.1	10.8	1,009,820	1,119,215
Labour force (15+ yrs.)			255	255	-	8.1	2,059,950	2,226,380
Employees			195	245	25.6	9.2	1,715,600	1,873,050
Self-employed			65	10	- 84.6	7.4	291,455	313,000
Participation rate [ppt.=percentage points]			46.4%	51.0%	4.6 ppt.	0.4 ppt.	65.2%	65.6%
Unemployment rate			-	3.9%	3.9 ppt.	-2.5 ppt.	8.5%	6.0%
Total population 25 to 64 years			280	325	16.1	6.5	2,144,050	2,284,465
No certificate, diploma or degree			95	40	- 57.9	- 40.1	471,470	282,200
High school certificate or equivalent			35	120	242.9	27.7	462,925	591,275
Apprenticeship/trades certificate or diploma			50	80	60.0	- 7.4	295,180	273,450
College, CEGEP or other cert. or diploma			65	55	- 15.4	11.3	401,760	447,005
University certificate, diploma or degree			30	35	16.7	34.7	512,715	690,535
Bachelor's degree			20	15	- 25.0	23.0	282,800	347,715
Census families			190	195	2.6	6.9	1,086,030	1,161,420
Lone-parent families			10	20	100.0	4.0	168,420	175,165
Households			275	280	1.8	7.1	1,534,335	1,643,150
1-family households			190	195	2.6	6.1	1,012,925	1,074,850
Multi-family households			-	-	-	18.4	35,050	41,510
Non-family households			85	80	- 5.9	8.3	486,355	526,785
Median Income (2000 & 2005)			\$ 15,494	\$ 21,473	38.6	12.5	\$ 22,095	\$ 24,867
Males			\$ 23,683	\$ 38,348	61.9	9.0	\$ 28,976	\$ 31,598
Females			\$ 10,564	\$ 16,152	52.9	14.0	\$ 17,546	\$ 19,997
Median Family Income (2000 & 2005)			\$ 59,725	\$ 62,167	4.1	20.0	\$ 54,840	\$ 65,787
Economic Families			195	195	-	6.5	1,044,850	1,112,810
2001 Incidence, low income			-	17.9%	17.9 ppt.	-0.6 ppt.	13.9%	13.3%
2006 Prevalence, low income			-	17.9%	17.9 ppt.	-0.6 ppt.	13.9%	13.3%
Unattached persons, 15+			95	90	- 5.3	4.7	576,825	603,880
Incidence, low income			34.8%	44.4%	9.6 ppt.	-1.4 ppt.	38.1%	36.7%
Population in private hh.			625	595	- 4.8	5.1	3,785,270	3,978,215
Incidence, low income			8.9%	21.0%	12.1 ppt.	-0.5 ppt.	17.8%	17.3%
Dwellings			270	280	3.7	7.1	1,534,335	1,643,150
Owned			200	245	22.5	12.5	1,017,485	1,145,045
Rented			75	35	- 53.3	- 3.6	512,360	493,995
Average gross rent			\$ 502	\$ 555	10.6	10.4	\$ 750	\$ 828
Average owners' payments			\$ 552	\$ 539	- 2.4	17.1	\$ 904	\$ 1,059
Avg. value, owned dwell.			\$ 129,885	\$ 151,526	16.7	81.5	\$ 230,645	\$ 418,703

Source: Statistics Canada. Notes: incomes are for 2005 and 2000; rent/owner's payments are restricted to non-farm, non-reserve private dwellings.

Midway Village

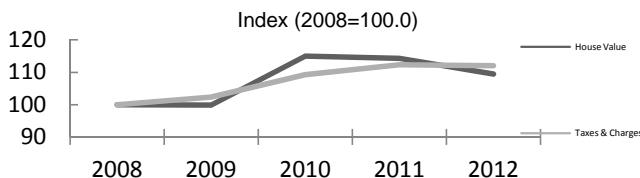
4		Labour Force by Industry (NAICS)					
		Midway			BC	% Distribution, 2006	
Industry		2001	2006	% Change	% change	Midway	BC
Total labour force		260	260	-	8.1	100.0	100.0
Industry - Not applicable		-	-	-	-26.6	-	1.5
All industries (Experienced LF)		260	255	-1.9	8.9	98.1	98.5
111-112 Farms		40	10	-75.0	5.2	3.8	1.8
113 Forestry and logging		10	20	100.0	-10.0	7.7	1.0
114 Fishing, hunting and trapping		-	-	-	1.3	-	0.2
1151/2 Support activities for farms		-	-	-	11.3	-	0.1
1153 Support activities for forestry		-	-	-	-21.5	-	0.3
21 Mining and oil and gas extraction		-	10	-	42.6	3.8	0.9
22 Utilities		-	-	-	-3.4	-	0.5
23 Construction		-	15	-	39.9	5.8	7.5
31-33 Manufacturing		75	95	26.7	-2.7	36.5	8.5
311 Food manufacturing		-	-	-	3.6	-	1.0
321 Wood product manufacturing		70	85	21.4	-16.1	32.7	1.7
322 Paper manufacturing		-	-	-	-13.5	-	0.6
41 Wholesale trade		-	-	-	11.6	-	4.1
44-45 Retail trade		30	25	-16.7	6.9	9.6	11.2
441 Motor vehicle and parts dealers		-	-	-	9.0	-	1.1
445 Food and beverage stores		20	25	25.0	8.4	9.6	2.9
448 Clothing & clothing accessories		-	-	-	9.2	-	1.1
452 General merchandise stores		-	-	-	6.5	-	1.2
48-49 Transportation & warehousing		-	10	-	0.6	3.8	5.2
51 Information and cultural industries		-	-	-	-5.3	-	2.6
52 Finance and insurance		-	10	-	4.5	3.8	3.8
53 Real estate & rental/leasing		-	-	-	22.1	-	2.3
54 Prof'sonal, scientific & tech. serv.		-	-	-	18.6	-	7.3
55 Mgmt. of companies/ent'prises		-	-	-	126.6	-	0.1
56 Admin+support, waste mgmnt srv.		20	-	-100.0	20.4	-	4.4
61 Educational services		25	20	-20.0	9.2	7.7	6.9
62 Health care and social assistance		30	10	-66.7	6.5	3.8	9.6
71 Arts, entertainment and recreation		-	-	-	11.3	-	2.3
72 Accommodation and food services		25	20	-20.0	7.7	7.7	8.1
721 Accommodation services		10	-	-100.0	2.5	-	1.7
722 Food services & drinking places		20	20	-	9.2	7.7	6.4
81 Other services (excl. public admin.)		-	10	-	11.8	3.8	4.9
91 Public administration		10	15	50.0	-2.0	5.8	5.0
Special Aggregations	Agriculture, Food and Beverage	40	10	-75.0	5.8	3.8	2.9
	Fishing and Fish Processing	-	-	-	-3.3	-	0.5
	Logging and Forest Products	75	105	40.0	-14.7	40.4	3.7
	Mining and Mineral Products	10	15	50.0	17.1	5.8	2.1

Source: Statistics Canada. Industry according to NAICS version used in each census. Unpublished data.

5		Business Locations- Number of Firms by Employment Size Range								
		Firms with no employees		Firms with employees		% change	Koot-Bound RD			
		Koot-Bound RD	BC	Koot-Bound R	BC	Koot-Bound RD	1 to 19	20 to 49	50-199	200 Plus
2008		1,030	185,879	1,092	175,003	-	968	83	33	8
2009		1,036	186,541	1,157	176,124	6.0	1,035	78	36	8
2010		1,083	194,349	1,192	175,913	3.0	1,070	77	39	6
2011		1,084	195,290	1,185	173,589	-0.6	1,061	81	36	7

Source: Business Register, Statistics Canada. In some areas, boundary changes/geocoding changes may cause large changes.

6		Municipal Residential Taxes and Charges on a Representative House					
		Midway					
		House Value		Taxes & Charges			
Year	\$	% change	\$	% change			
2008	157,221		1,696				
2009	157,082	-0.1	1,736	2.4			
2010	180,859	15.1	1,854	6.8			
2011	179,722	-0.6	1,905	2.8			
2012	172,130	-4.2	1,901	-0.2			



Source: Ministry of Community, Sport & Cultural Development http://www.cd.gov.bc.ca/lgd/infra/statistics_index.htm (No RD level figures)

Midway Village

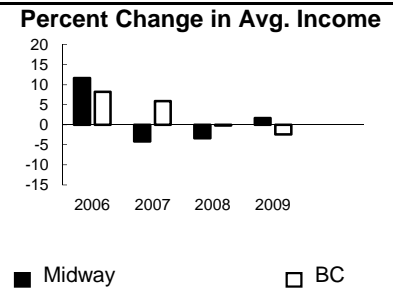
7	Values of Building Permits										Year
	Residential				Non-Residential			Total			
	Number of Units		Value \$'000		Value \$'000			Value \$'000			
Year	Midway	BC	Midway	BC	Midway	BC	Midway	BC	Midway	BC	
2007	3	40,932	605	8,611,723	27	3,932,968	632	12,544,691	2007		
2008	5	30,110	1,292	6,899,289	224	3,677,866	1,516	10,577,155	2008		
2009	2	18,607	430	4,491,075	26	3,138,810	456	7,629,885	2009		
2010	1	28,984	151	6,705,888	112	3,017,921	263	9,723,809	2010		
2011	4	25,745	661	6,113,406	90	3,136,361	751	9,249,767	2011		

Source: Statistics Canada

Note: Detailed non-residential permits data can be found on our Website: www.bcstats.gov.bc.ca

A dash can indicate a nil report, a value of less than \$500, or non-reporting. P indicates 'preliminary'.

8	Personal Taxation Statistics						Percent Change in Avg. Income	
	Total Income of All Returns							
	Year	All Returns (number)		Average Income (\$)		% Change avg. income		
	Midway	BC	Midway	BC	Midway	BC		
2005	550	3,154,090	30,213	35,601	n/a	n/a		
2006	540	3,165,750	33,735	38,523	11.7	8.2		
2007	540	3,287,750	32,335	40,802	-4.2	5.9		
2008	550	3,383,640	31,245	40,736	-3.4	-0.2		
2009	560	3,406,860	31,764	39,754	1.7	-2.4		



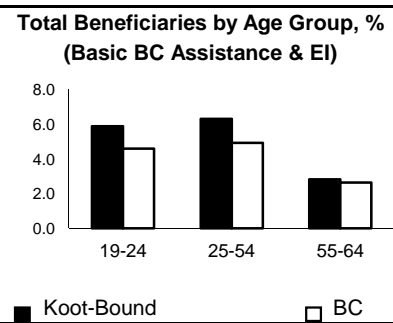
Taxation data available at: <http://www.bcstats.gov.bc.ca/data/dd/income.asp>

9	Source of Total Income 2009				% Distribution, Total Income					
	Midway		BC							
	\$Thousands	% of Total	% of Total							
Employment	7,724	43.4	63.7							
Pension	5,705	32.1	13.8							
Investment	1,320	7.4	9.8							
Self-Employed	542	3.0	5.3							
Other	1,837	10.3	5.3							
Tax Exempt	659	3.7	2.0							
Total	17,788	100.0	100.0							



Source: Canada Revenue Agency. Areas are defined by postal codes and may not match municipal boundaries.

9	Dependency on the Safety Net						Total Beneficiaries by Age Group, % (Basic BC Assistance & EI)		
	Percentage of Population by Age Receiving Benefits - September 2009								
	Age Group	BC Basic* Income Assistance Recipients (%)		Employment Insurance Beneficiaries (%)		Total of BC Basic Income Assistance & EI Beneficiaries (%)		Koot-Bound	BC
Koot-Bound		BC	Koot-Bound	BC	Koot-Bound	BC			
Under 19	3.0	2.7							
19-24	2.2	2.1	3.7	2.6	5.9	4.6			
25-54	2.5	1.9	3.9	3.1	6.3	4.9			
55-64	0.9	0.7	1.9	2.0	2.8	2.6			
19-64	2.0	1.7	3.3	2.8	5.3	4.4			



* On temporary assistance only. Excluded are those on Continuous Assistance, aboriginals living on reserve, seniors/OAS, & children living with relatives.

Source: BC Stats (using administrative files from the BC Ministry of Housing & Social Development, and Human Resources & Social Development Canada)

Note: EI Beneficiaries reports now include regular, fishing and employment benefits, work sharing and support measures. The reports exclude sickness, maternity and parental benefits.

10	Business Formations and Failures									
	Incorporations				Bankruptcies					
	Number				Trial		Kootenay DR		BC	
Year	Midway	BC	Year	Business	Consumer	Business	Consumer	Business	Consumer	
2007	1	34,036	2005	2	23	n.a.	n.a.	786	8,168	
2008	-	30,085	2006	1	17	31	224	585	7,020	
2009	1	26,431	2007	0	17	14	197	470	6,651	
2010	1	30,305	2008	0	22	16	180	454	7,293	
2011	1	30,844	2009	1	18	9	339	380	10,639	

Source: BC Ministry of Finance

Source: Office of the Superintendent of Bankruptcy, Government of Canada

Incorporations are counted in municipality of the registered office address which may differ from the actual business location.

Note: Bankruptcy is by urban postal code forward sortation area and is counted where it is filed.