

Nakusp Village

1	General
<p>Incorporated in 1964, Nakusp has a total land area of 8 square km (2006 Census). By highway the Village is 146 km north of Castlegar, 99 km south of Revelstoke and 193 km east of Vernon. Nakusp is in the Central Kootenay Regional District.</p>	

2					Population Estimates					Age Distribution				
Annual Estimates					2011 Census					% Distribution, 2011 *				
Year	Nakusp	% Change Prev. Year	BC	% Change Prev. Year	Nakusp	Male	Female	Nakusp	BC					
					All ages	750	820	100.0	100.0					
2007	1,512	n/a	4,309,632	n/a	0 - 14	105	110	13.4	15.4					
2008	1,523	0.7	4,384,047	1.7	15 - 24	75	80	9.9	12.6					
2009	1,532	0.6	4,459,947	1.7	25 - 44	145	155	18.8	26.3					
2010	1,536	0.3	4,529,647	1.6	45 - 64	245	285	33.4	30.0					
2011	1,532	-0.3	4,573,321	1.0	65 +	185	195	24.5	15.7					

Source: Statistics Canada (as of July 1, includes estimate of Census undercount)

* based on published totals, both sexes

2006 Census Profiles can be found on our Website at <http://www.bcstats.gov.bc.ca/census.asp>

3							Selected Census Characteristics						
							Nakusp			British Columbia			
Characteristics	2001	2006	% Change	% Change	2001	2006							
Population	1,698	1,524	- 10.2	5.3	3,907,738	4,113,487							
Population (by citizenship)	1,670	1,510	- 9.6	5.3	3,868,875	4,074,385							
Non-immigrant	1,500	1,405	- 6.3	2.9	2,821,870	2,904,240							
Immigrant	170	105	- 38.2	10.8	1,009,820	1,119,215							
Labour force (15+ yrs.)	815	790	- 3.1	8.1	2,059,950	2,226,380							
Employees	650	660	1.5	9.2	1,715,600	1,873,050							
Self-employed	160	125	- 21.9	7.4	291,455	313,000							
Participation rate [ppt.=percentage points]	61.0%	62.9%	1.9 ppt.	0.4 ppt.	65.2%	65.6%							
Unemployment rate	20.1%	9.5%	-10.6 ppt.	-2.5 ppt.	8.5%	6.0%							
Total population 25 to 64 years	890	860	- 3.4	6.5	2,144,050	2,284,465							
No certificate, diploma or degree	250	185	- 26.0	- 40.1	471,470	282,200							
High school certificate or equivalent	205	260	26.8	27.7	462,925	591,275							
Apprenticeship/trades certificate or diploma	170	105	- 38.2	- 7.4	295,180	273,450							
College, CEGEP or other cert. or diploma	170	140	- 17.6	11.3	401,760	447,005							
University certificate, diploma or degree	95	170	78.9	34.7	512,715	690,535							
Bachelor's degree	70	110	57.1	23.0	282,800	347,715							
Census families	500	440	- 12.0	6.9	1,086,030	1,161,420							
Lone-parent families	85	45	- 47.1	4.0	168,420	175,165							
Households	725	680	- 6.2	7.1	1,534,335	1,643,150							
1-family households	500	440	- 12.0	6.1	1,012,925	1,074,850							
Multi-family households	-	-	-	18.4	35,050	41,510							
Non-family households	225	240	6.7	8.3	486,355	526,785							
Median Income (2000 & 2005)	\$ 17,996	\$ 22,464	24.8	12.5	\$ 22,095	\$ 24,867							
Males	\$ 28,307	\$ 31,905	12.7	9.0	\$ 28,976	\$ 31,598							
Females	\$ 14,080	\$ 17,893	27.1	14.0	\$ 17,546	\$ 19,997							
Median Family Income (2000 & 2005)	\$ 46,690	\$ 55,792	19.5	20.0	\$ 54,840	\$ 65,787							
Economic Families	500	455	- 9.0	6.5	1,044,850	1,112,810							
2001 Incidence, low income 2006 Prevalence, low income	13.3%	11.1%	-2.2 ppt.	-0.6 ppt.	13.9%	13.3%							
Unattached persons, 15+	255	250	- 2.0	4.7	576,825	603,880							
Incidence, low income	37.4%	34.0%	-3.4 ppt.	-1.4 ppt.	38.1%	36.7%							
Population in private hh.	1,655	1,495	- 9.7	5.1	3,785,270	3,978,215							
Incidence, low income	18.0%	14.7%	-3.3 ppt.	-0.5 ppt.	17.8%	17.3%							
Dwellings	730	680	- 6.8	7.1	1,534,335	1,643,150							
Owned	505	545	7.9	12.5	1,017,485	1,145,045							
Rented	220	135	- 38.6	- 3.6	512,360	493,995							
Average gross rent	\$ 682	\$ 531	- 22.1	10.4	\$ 750	\$ 828							
Average owners' payments	\$ 648	\$ 698	7.7	17.1	\$ 904	\$ 1,059							
Avg. value, owned dwell.	\$ 124,971	\$ 195,985	56.8	81.5	\$ 230,645	\$ 418,703							

Source: Statistics Canada. Notes: incomes are for 2005 and 2000; rent/owner's payments are restricted to non-farm, non-reserve private dwellings.

Nakusp Village

4		Labour Force by Industry (NAICS)					
		Nakusp			BC	% Distribution, 2006	
Industry	2001	2006	% Change	% change	Nakusp	BC	
Total labour force	820	790	- 3.7	8.1	100.0	100.0	
Industry - Not applicable	-	10	-	- 26.6	1.3	1.5	
All industries (Experienced LF)	815	785	- 3.7	8.9	99.4	98.5	
111-112 Farms	-	-	-	5.2	-	1.8	
113 Forestry and logging	120	110	- 8.3	- 10.0	13.9	1.0	
114 Fishing, hunting and trapping	15	-	- 100.0	1.3	-	0.2	
1151/2 Support activities for farms	-	-	-	11.3	-	0.1	
1153 Support activities for forestry	10	35	250.0	- 21.5	4.4	0.3	
21 Mining and oil and gas extraction	-	-	-	42.6	-	0.9	
22 Utilities	-	15	-	- 3.4	1.9	0.5	
23 Construction	60	85	41.7	39.9	10.8	7.5	
31-33 Manufacturing	40	30	- 25.0	- 2.7	3.8	8.5	
311 Food manufacturing	-	-	-	3.6	-	1.0	
321 Wood product manufacturing	30	10	- 66.7	- 16.1	1.3	1.7	
322 Paper manufacturing	-	-	-	- 13.5	-	0.6	
41 Wholesale trade	15	10	- 33.3	11.6	1.3	4.1	
44-45 Retail trade	90	120	33.3	6.9	15.2	11.2	
441 Motor vehicle and parts dealers	-	10	-	9.0	1.3	1.1	
445 Food and beverage stores	40	35	- 12.5	8.4	4.4	2.9	
448 Clothing & clothing accessories	10	10	-	9.2	1.3	1.1	
452 General merchandise stores	-	10	-	6.5	1.3	1.2	
48-49 Transportation & warehousing	30	35	16.7	0.6	4.4	5.2	
51 Information and cultural industries	30	10	- 66.7	- 5.3	1.3	2.6	
52 Finance and insurance	10	10	-	4.5	1.3	3.8	
53 Real estate & rental/leasing	-	-	-	22.1	-	2.3	
54 Prof'sonal, scientific & tech. serv.	35	20	- 42.9	18.6	2.5	7.3	
55 Mgmt. of companies/ent'prises	-	-	-	126.6	-	0.1	
56 Admin+support, waste mgmnt srv.	35	20	- 42.9	20.4	2.5	4.4	
61 Educational services	45	55	22.2	9.2	7.0	6.9	
62 Health care and social assistance	100	80	- 20.0	6.5	10.1	9.6	
71 Arts, entertainment and recreation	-	-	-	11.3	-	2.3	
72 Accommodation and food services	90	100	11.1	7.7	12.7	8.1	
721 Accommodation services	10	75	650.0	2.5	9.5	1.7	
722 Food services & drinking places	80	25	- 68.8	9.2	3.2	6.4	
81 Other services (excl. public admin.)	45	35	- 22.2	11.8	4.4	4.9	
91 Public administration	35	20	- 42.9	- 2.0	2.5	5.0	
Special Aggregations							
Agriculture, Food and Beverage	-	-	-	5.8	-	2.9	
Fishing and Fish Processing	15	-	- 100.0	- 3.3	-	0.5	
Logging and Forest Products	155	150	- 3.2	- 14.7	19.0	3.7	
Mining and Mineral Products	10	-	- 100.0	17.1	-	2.1	

Source: Statistics Canada. Industry according to NAICS version used in each census. Unpublished data.

5		Business Locations- Number of Firms by Employment Size Range								
		Firms with no employees		Firms with employees		% change		C Kootenay RD		
		C Kootenay RD	BC	C Kootenay RI	BC	C Kootenay RD	1 to 19	20 to 49	50-199	200 Plus
2008		2,189	185,879	2,502	175,003	-	2,293	134	63	12
2009		2,138	186,541	2,367	176,124	- 5.4	2,170	123	61	13
2010		2,233	194,349	2,408	175,913	1.7	2,204	128	64	12
2011		2,164	195,290	2,381	173,589	- 1.1	2,194	119	58	10

Source: Business Register, Statistics Canada. In some areas, boundary changes/geocoding changes may cause large changes.

6		Municipal Residential Taxes and Charges on a Representative House					
		Nakusp					
		House Value		Taxes & Charges			
Year	\$	% change	\$	% change			
2008	208,289		2,508				
2009	210,250	0.9	2,606	3.9			
2010	221,390	5.3	2,852	9.4			
2011	207,216	-6.4	2,555	-10.4			
2012	207,469	0.1	2,611	2.2			

Source: Ministry of Community, Sport & Cultural Development http://www.cd.gov.bc.ca/lgd/infra/statistics_index.htm (No RD level figures)

Nakusp Village

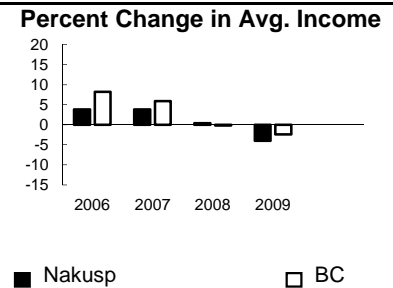
7	Values of Building Permits								
	Residential				Non-Residential		Total		Year
	Number of Units		Value \$'000		Value \$'000		Value \$'000		
Nakusp	BC	Nakusp	BC	Nakusp	BC	Nakusp	BC		
2007	19	40,932	3,081	8,611,723	115	3,932,968	3,196	12,544,691	2007
2008	6	30,110	1,442	6,899,289	537	3,677,866	1,979	10,577,155	2008
2009	4	18,607	773	4,491,075	68	3,138,810	841	7,629,885	2009
2010	3	28,984	741	6,705,888	3,547	3,017,921	4,288	9,723,809	2010
2011	10	25,745	835	6,113,406	479	3,136,361	1,314	9,249,767	2011

Source: Statistics Canada

Note: Detailed non-residential permits data can be found on our Website: www.bcstats.gov.bc.ca

A dash can indicate a nil report, a value of less than \$500, or non-reporting. P indicates 'preliminary'.

8	Personal Taxation Statistics					Percent Change in Avg. Income	
	Total Income of All Returns						
	Year	All Returns (number)	Average Income (\$)		% Change avg. income		
	Nakusp	BC	Nakusp	BC	Nakusp	BC	
2005	2,010	3,154,090	29,968	35,601	n/a	n/a	
2006	2,000	3,165,750	31,102	38,523	3.8	8.2	
2007	2,080	3,287,750	32,282	40,802	3.8	5.9	
2008	2,130	3,383,640	32,403	40,736	0.4	-0.2	
2009	2,150	3,406,860	31,109	39,754	-4.0	-2.4	



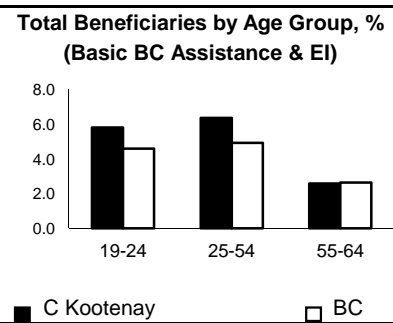
Taxation data available at: <http://www.bcstats.gov.bc.ca/data/dd/income.asp>

Source of Total Income 2009				% Distribution, Total Income					
	Nakusp		BC						
	\$Thousands	% of Total		% of Total					
Employment	34,862	52.1	63.7						
Pension	14,377	21.5	13.8						
Investment	6,607	9.9	9.8						
Self-Employed	3,213	4.8	5.3						
Other	5,389	8.1	5.3						
Tax Exempt	2,437	3.6	2.0						
Total	66,885	100.0	100.0						



Source: Canada Revenue Agency. Areas are defined by postal codes and may not match municipal boundaries.

9	Dependency on the Safety Net						Total Beneficiaries by Age Group, % (Basic BC Assistance & EI)		
	Percentage of Population by Age Receiving Benefits - September 2009								
	Age Group	BC Basic* Income Assistance Recipients (%)		Employment Insurance Beneficiaries (%)		Total of BC Basic Income Assistance & EI Beneficiaries (%)			
C Kootenay		BC	C Kootenay	BC	C Kootenay	BC			
Under 19	3.4	2.7							
19-24	2.3	2.1	3.6	2.6	5.8	4.6			
25-54	2.4	1.9	4.1	3.1	6.4	4.9			
55-64	0.6	0.7	2.0	2.0	2.6	2.6			
19-64	1.9	1.7	3.5	2.8	5.3	4.4			



* On temporary assistance only. Excluded are those on Continuous Assistance, aboriginals living on reserve, seniors/OAS, & children living with relatives.

Source: BC Stats (using administrative files from the BC Ministry of Housing & Social Development, and Human Resources & Social Development Canada)

Note: EI Beneficiaries reports now include regular, fishing and employment benefits, work sharing and support measures. The reports exclude sickness, maternity and parental benefits.

10	Business Formations and Failures								
	Incorporations			Bankruptcies					
	Number		Year	Nelson		Kootenay DR		BC	
Nakusp	BC	Business		Consumer	Business	Consumer	Business	Consumer	
2007	10	34,036	2005	5	19	n.a.	n.a.	786	8,168
2008	8	30,085	2006	7	21	31	224	585	7,020
2009	8	26,431	2007	3	16	14	197	470	6,651
2010	4	30,305	2008	2	14	16	180	454	7,293
2011	6	30,844	2009	0	39	9	339	380	10,639

Source: BC Ministry of Finance

Source: Office of the Superintendent of Bankruptcy, Government of Canada

Incorporations are counted in municipality of the registered office address which may differ from the actual business location.

Note: Bankruptcy is by urban postal code forward sortation area and is counted where it is filed.