

New Denver Village

1	General
<p>Incorporated in 1929, New Denver has a total land area of 1.1 square km (2006 Census). By highway the Village is 47 km west of Kaslo and 46 km southeast of Nakusp. New Denver is in the Central Kootenay Regional District.</p>	

2	Population Estimates				Age Distribution				
Annual Estimates					2011 Census			% Distribution, 2011 *	
Year	New Denver	% Change Prev. Year	BC	% Change Prev. Year	New Denver	Male	Female	New Denver	BC
2007	503	n/a	4,309,632	n/a	All ages	235	270	100.0	100.0
2008	526	4.6	4,384,047	1.7	0 - 14	25	25	10.0	15.4
2009	517	-1.7	4,459,947	1.7	15 - 24	20	15	7.0	12.6
2010	510	-1.4	4,529,647	1.6	25 - 44	30	35	14.0	26.3
2011	515	1.0	4,573,321	1.0	45 - 64	85	115	39.0	30.0
					65 +	65	85	30.0	15.7

Source: Statistics Canada (as of July 1, includes estimate of Census undercount)

* based on published totals, both sexes

2006 Census Profiles can be found on our Website at <http://www.bcstats.gov.bc.ca/census.asp>

3	Selected Census Characteristics					
		New Denver			British Columbia	
Characteristics	2001	2006	% Change	% Change	2001	2006
Population	538	512	- 4.8	5.3	3,907,738	4,113,487
Population (by citizenship)	510	485	- 4.9	5.3	3,868,875	4,074,385
Non-immigrant	410	400	- 2.4	2.9	2,821,870	2,904,240
Immigrant	95	80	- 15.8	10.8	1,009,820	1,119,215
Labour force (15+ yrs.)	230	195	- 15.2	8.1	2,059,950	2,226,380
Employees	180	170	- 5.6	9.2	1,715,600	1,873,050
Self-employed	50	20	- 60.0	7.4	291,455	313,000
Participation rate [ppt.=percentage points]	56.8%	45.2%	-11.6 ppt.	0.4 ppt.	65.2%	65.6%
Unemployment rate	15.2%	10.5%	-4.7 ppt.	-2.5 ppt.	8.5%	6.0%
Total population 25 to 64 years	275	265	- 3.6	6.5	2,144,050	2,284,465
No certificate, diploma or degree	95	55	- 42.1	- 40.1	471,470	282,200
High school certificate or equivalent	75	75	-	27.7	462,925	591,275
Apprenticeship/trades certificate or diploma	40	30	- 25.0	- 7.4	295,180	273,450
College, CEGEP or other cert. or diploma	40	45	12.5	11.3	401,760	447,005
University certificate, diploma or degree	30	55	83.3	34.7	512,715	690,535
Bachelor's degree	10	30	200.0	23.0	282,800	347,715
Census families	145	135	- 6.9	6.9	1,086,030	1,161,420
Lone-parent families	25	15	- 40.0	4.0	168,420	175,165
Households	260	240	- 7.7	7.1	1,534,335	1,643,150
1-family households	145	130	- 10.3	6.1	1,012,925	1,074,850
Multi-family households	-	-	-	18.4	35,050	41,510
Non-family households	115	105	- 8.7	8.3	486,355	526,785
Median Income (2000 & 2005)	\$ 16,615	\$ 16,818	1.2	12.5	\$ 22,095	\$ 24,867
Males	\$ 26,168	\$ 18,665	- 28.7	9.0	\$ 28,976	\$ 31,598
Females	\$ 15,377	\$ 14,786	- 3.8	14.0	\$ 17,546	\$ 19,997
Median Family Income (2000 & 2005)	\$ 40,108	\$ 41,089	2.4	20.0	\$ 54,840	\$ 65,787
Economic Families	145	135	- 6.9	6.5	1,044,850	1,112,810
2001 Incidence, low income 2006 Prevalence, low income	19.3%	7.4%	-11.9 ppt.	-0.6 ppt.	13.9%	13.3%
Unattached persons, 15+	130	110	- 15.4	4.7	576,825	603,880
Incidence, low income	40.2%	50.0%	9.8 ppt.	-1.4 ppt.	38.1%	36.7%
Population in private hh.	510	460	- 9.8	5.1	3,785,270	3,978,215
Incidence, low income	22.9%	22.0%	-0.9 ppt.	-0.5 ppt.	17.8%	17.3%
Dwellings	260	240	- 7.7	7.1	1,534,335	1,643,150
Owned	155	160	3.2	12.5	1,017,485	1,145,045
Rented	105	85	- 19.0	- 3.6	512,360	493,995
Average gross rent	\$ 441	\$ 576	30.6	10.4	\$ 750	\$ 828
Average owners' payments	\$ 386	\$ 339	- 12.2	17.1	\$ 904	\$ 1,059
Avg. value, owned dwell.	\$ 111,881	\$ 208,210	86.1	81.5	\$ 230,645	\$ 418,703

Source: Statistics Canada. Notes: incomes are for 2005 and 2000; rent/owner's payments are restricted to non-farm, non-reserve private dwellings.

New Denver Village

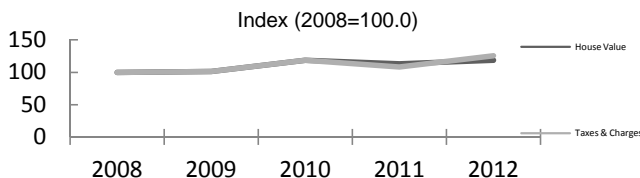
4		Labour Force by Industry (NAICS)					
		New Denver			BC	% Distribution, 2006	
Industry		2001	2006	% Change	% change	New Denver	BC
Total labour force		230	195	- 15.2	8.1	100.0	100.0
Industry - Not applicable		-	-	-	- 26.6	-	1.5
All industries (Experienced LF)		225	195	- 13.3	8.9	100.0	98.5
111-112 Farms		-	-	-	5.2	-	1.8
113 Forestry and logging		10	10	-	- 10.0	5.1	1.0
114 Fishing, hunting and trapping		-	-	-	1.3	-	0.2
1151/2 Support activities for farms		-	-	-	11.3	-	0.1
1153 Support activities for forestry		10	-	- 100.0	- 21.5	-	0.3
21 Mining and oil and gas extraction		-	20	-	42.6	10.3	0.9
22 Utilities		-	-	-	- 3.4	-	0.5
23 Construction		15	25	66.7	39.9	12.8	7.5
31-33 Manufacturing		15	15	-	- 2.7	7.7	8.5
311 Food manufacturing		-	-	-	3.6	-	1.0
321 Wood product manufacturing		10	-	- 100.0	- 16.1	-	1.7
322 Paper manufacturing		-	-	-	- 13.5	-	0.6
41 Wholesale trade		-	-	-	11.6	-	4.1
44-45 Retail trade		30	30	-	6.9	15.4	11.2
441 Motor vehicle and parts dealers		-	-	-	9.0	-	1.1
445 Food and beverage stores		15	30	100.0	8.4	15.4	2.9
448 Clothing & clothing accessories		-	-	-	9.2	-	1.1
452 General merchandise stores		-	-	-	6.5	-	1.2
48-49 Transportation & warehousing		-	10	-	0.6	5.1	5.2
51 Information and cultural industries		-	-	-	- 5.3	-	2.6
52 Finance and insurance		-	-	-	4.5	-	3.8
53 Real estate & rental/leasing		-	-	-	22.1	-	2.3
54 Prof'sonal, scientific & tech. serv.		-	-	-	18.6	-	7.3
55 Mgmt. of companies/ent'prises		-	-	-	126.6	-	0.1
56 Admin+support, waste mgmnt srv.		20	-	- 100.0	20.4	-	4.4
61 Educational services		-	15	-	9.2	7.7	6.9
62 Health care and social assistance		25	25	-	6.5	12.8	9.6
71 Arts, entertainment and recreation		10	-	- 100.0	11.3	-	2.3
72 Accommodation and food services		35	15	- 57.1	7.7	7.7	8.1
721 Accommodation services		10	10	-	2.5	5.1	1.7
722 Food services & drinking places		30	10	- 66.7	9.2	5.1	6.4
81 Other services (excl. public admin.)		45	10	- 77.8	11.8	5.1	4.9
91 Public administration		-	15	-	- 2.0	7.7	5.0
Special Aggregations	Agriculture, Food and Beverage	-	-	-	5.8	-	2.9
	Fishing and Fish Processing	-	-	-	- 3.3	-	0.5
	Logging and Forest Products	25	15	- 40.0	- 14.7	7.7	3.7
	Mining and Mineral Products	-	20	-	17.1	10.3	2.1

Source: Statistics Canada. Industry according to NAICS version used in each census. Unpublished data.

5		Business Locations- Number of Firms by Employment Size Range								
		Firms with no employees		Firms with employees		% change		C Kootenay RD		
		C Kootenay RD	BC	C Kootenay RI	BC	C Kootenay RD	1 to 19	20 to 49	50-199	200 Plus
2008		2,189	185,879	2,502	175,003	-	2,293	134	63	12
2009		2,138	186,541	2,367	176,124	- 5.4	2,170	123	61	13
2010		2,233	194,349	2,408	175,913	1.7	2,204	128	64	12
2011		2,164	195,290	2,381	173,589	- 1.1	2,194	119	58	10

Source: Business Register, Statistics Canada. In some areas, boundary changes/geocoding changes may cause large changes.

6		Municipal Residential Taxes and Charges on a Representative House					
		New Denver					
		House Value		Taxes & Charges			
Year		\$	% change	\$	% change		
2008		165,691		1,437			
2009		167,390	1.0	1,454	1.2		
2010		196,252	17.2	1,704	17.2		
2011		187,600	-4.4	1,555	-8.7		
2012		196,777	4.9	1,805	16.0		



Source: Ministry of Community, Sport & Cultural Development http://www.cd.gov.bc.ca/lgd/infra/statistics_index.htm (No RD level figures)

New Denver Village

7	Values of Building Permits								
	Residential				Non-Residential		Total		Year
	Number of Units		Value \$'000		Value \$'000		Value \$'000		
New Denver	BC	New Denver	BC	New Denver	BC	New Denver	BC		
2007	352	40,932	78,631	8,611,723	30,716	3,932,968	109,347	12,544,691	2007
2008	547	30,110	102,282	6,899,289	20,372	3,677,866	122,654	10,577,155	2008
2009	252	18,607	62,110	4,491,075	20,890	3,138,810	83,000	7,629,885	2009
2010	282	28,984	70,338	6,705,888	42,505	3,017,921	112,843	9,723,809	2010
2011	244	25,745	61,602	6,113,406	22,861	3,136,361	84,463	9,249,767	2011

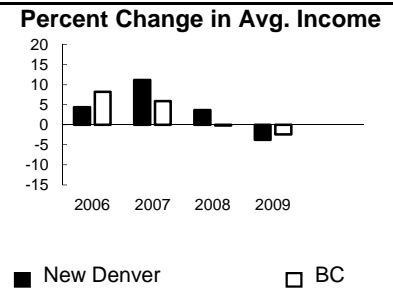
Source: Statistics Canada

Data is for Central Kootenay Regional District

Note: Detailed non-residential permits data can be found on our Website: www.bcstats.gov.bc.ca

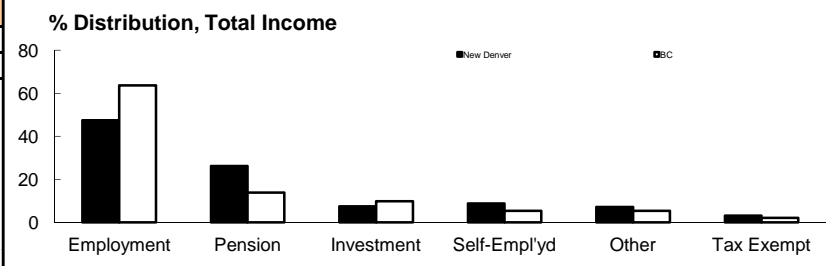
A dash can indicate a nil report, a value of less than \$500, or non-reporting. P indicates 'preliminary'.

8	Personal Taxation Statistics					Percent Change in Avg. Income	
	Total Income of All Returns						
	All Returns (number)		Average Income (\$)		% Change avg. income		
Year	New Denver	BC	New Denver	BC	New Denver	BC	
2005	710	3,154,090	26,531	35,601	n/a	n/a	
2006	710	3,165,750	27,694	38,523	4.4	8.2	
2007	700	3,287,750	30,784	40,802	11.2	5.9	
2008	710	3,383,640	31,915	40,736	3.7	-0.2	
2009	740	3,406,860	30,708	39,754	-3.8	-2.4	



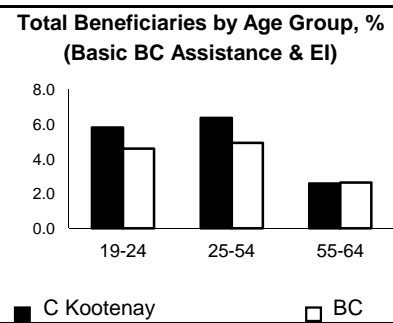
Taxation data available at: <http://www.bcstats.gov.bc.ca/data/dd/income.asp>

Source of Total Income 2009				% Distribution, Total Income					
	New Denver		BC						
	\$Thousands	% of Total		% of Total					
Employment	10,772	47.4	63.7						
Pension	5,961	26.2	13.8						
Investment	1,697	7.5	9.8						
Self-Employed	1,988	8.7	5.3						
Other	1,605	7.1	5.3						
Tax Exempt	700	3.1	2.0						
Total	22,724	100.0	100.0						



Source: Canada Revenue Agency. Areas are defined by postal codes and may not match municipal boundaries.

9	Dependency on the Safety Net						Total Beneficiaries by Age Group, % (Basic BC Assistance & EI)		
	Percentage of Population by Age Receiving Benefits - September 2009								
	Age Group	BC Basic* Income Assistance Recipients (%)		Employment Insurance Beneficiaries (%)		Total of BC Basic Income Assistance & EI Beneficiaries (%)			
C Kootenay		BC	C Kootenay	BC	C Kootenay	BC			
Under 19	3.4	2.7							
19-24	2.3	2.1	3.6	2.6	5.8	4.6			
25-54	2.4	1.9	4.1	3.1	6.4	4.9			
55-64	0.6	0.7	2.0	2.0	2.6	2.6			
19-64	1.9	1.7	3.5	2.8	5.3	4.4			



* On temporary assistance only. Excluded are those on Continuous Assistance, aboriginals living on reserve, seniors/OAS, & children living with relatives.

Source: BC Stats (using administrative files from the BC Ministry of Housing & Social Development, and Human Resources & Social Development Canada)

Note: EI Beneficiaries reports now include regular, fishing and employment benefits, work sharing and support measures. The reports exclude sickness, maternity and parental benefits.

10	Business Formations and Failures								
	Incorporations			Bankruptcies					
	Number		Year	Nelson		Kootenay DR		BC	
New Denver	BC	Business		Consumer	Business	Consumer	Business	Consumer	
2007	2	34,036	2005	5	19	n.a.	n.a.	786	8,168
2008	4	30,085	2006	7	21	31	224	585	7,020
2009	4	26,431	2007	3	16	14	197	470	6,651
2010	1	30,305	2008	2	14	16	180	454	7,293
2011	0	30,844	2009	0	39	9	339	380	10,639

Source: BC Ministry of Finance

Source: Office of the Superintendent of Bankruptcy, Government of Canada

Incorporations are counted in municipality of the registered office address which may differ from the actual business location.

Note: Bankruptcy is by urban postal code forward sortation area and is counted where it is filed.