

Radium Hot Springs Village

1	General
<p>Incorporated in 1990, Radium Hot Springs has a total land area of 6.31 square km (2006 Census). By highway the Village is located 105 km south of Golden and 143 km north of Cranbrook. Radium Hot Springs is in the East Kootenay Regional District.</p>	

2	Population Estimates				Age Distribution				
Annual Estimates					2011 Census			% Distribution, 2011 *	
Year	Radium HSp	% Change Prev. Year	BC	% Change Prev. Year	Radium HSp	Male	Female	Radium HSp	BC
					All ages	385	390	100.0	100.0
2007	892	n/a	4,309,632	n/a	0 - 14	45	60	13.5	15.4
2008	973	9.1	4,384,047	1.7	15 - 24	45	40	10.3	12.6
2009	1,006	3.4	4,459,947	1.7	25 - 44	85	90	23.2	26.3
2010	1,015	0.9	4,529,647	1.6	45 - 64	145	150	38.1	30.0
2011	1,028	1.3	4,573,321	1.0	65 +	60	55	14.2	15.7

Source: Statistics Canada (as of July 1, includes estimate of Census undercount)

* based on published totals, both sexes

2006 Census Profiles can be found on our Website at <http://www.bcstats.gov.bc.ca/census.asp>

3	Selected Census Characteristics					
Characteristics	Radium Hot Springs			British Columbia		
	2001	2006	% Change	% Change	2001	2006
Population	583	735	26.1	5.3	3,907,738	4,113,487
Population (by citizenship)	585	730	24.8	5.3	3,868,875	4,074,385
Non-immigrant	510	660	29.4	2.9	2,821,870	2,904,240
Immigrant	65	75	15.4	10.8	1,009,820	1,119,215
Labour force (15+ yrs.)	320	515	60.9	8.1	2,059,950	2,226,380
Employees	260	430	65.4	9.2	1,715,600	1,873,050
Self-employed	60	80	33.3	7.4	291,455	313,000
Participation rate [ppt.=percentage points]	68.1%	80.5%	12.4 ppt.	0.4 ppt.	65.2%	65.6%
Unemployment rate	3.1%	3.9%	0.8 ppt.	-2.5 ppt.	8.5%	6.0%
Total population 25 to 64 years	360	455	26.4	6.5	2,144,050	2,284,465
No certificate, diploma or degree	65	75	15.4	-40.1	471,470	282,200
High school certificate or equivalent	95	115	21.1	27.7	462,925	591,275
Apprenticeship/trades certificate or diploma	80	95	18.8	-7.4	295,180	273,450
College, CEGEP or other cert. or diploma	85	90	5.9	11.3	401,760	447,005
University certificate, diploma or degree	50	80	60.0	34.7	512,715	690,535
Bachelor's degree	25	30	20.0	23.0	282,800	347,715
Census families	175	230	31.4	6.9	1,086,030	1,161,420
Lone-parent families	20	45	125.0	4.0	168,420	175,165
Households	225	285	26.7	7.1	1,534,335	1,643,150
1-family households	170	210	23.5	6.1	1,012,925	1,074,850
Multi-family households	-	10	-	18.4	35,050	41,510
Non-family households	50	65	30.0	8.3	486,355	526,785
Median Income (2000 & 2005)	\$ 21,337	\$ 28,663	34.3	12.5	\$ 22,095	\$ 24,867
Males	\$ 29,081	\$ 35,974	23.7	9.0	\$ 28,976	\$ 31,598
Females	\$ 20,716	\$ 16,571	-20.0	14.0	\$ 17,546	\$ 19,997
Median Family Income (2000 & 2005)	\$ 56,581	\$ 66,484	17.5	20.0	\$ 54,840	\$ 65,787
Economic Families	175	220	25.7	6.5	1,044,850	1,112,810
2001 Incidence, low income	-	6.8%	6.8 ppt.	-0.6 ppt.	13.9%	13.3%
2006 Prevalence, low income	-	6.8%	6.8 ppt.	-0.6 ppt.	13.9%	13.3%
Unattached persons, 15+	75	90	20.0	4.7	576,825	603,880
Incidence, low income	22.4%	10.5%	-11.9 ppt.	-1.4 ppt.	38.1%	36.7%
Population in private hh.	570	660	15.8	5.1	3,785,270	3,978,215
Incidence, low income	8.8%	7.6%	-1.2 ppt.	-0.5 ppt.	17.8%	17.3%
Dwellings	225	285	26.7	7.1	1,534,335	1,643,150
Owned	200	235	17.5	12.5	1,017,485	1,145,045
Rented	25	50	100.0	-3.6	512,360	493,995
Average gross rent	\$ 441	\$ 781	77.1	10.4	\$ 750	\$ 828
Average owners' payments	\$ 821	\$ 866	5.5	17.1	\$ 904	\$ 1,059
Avg. value, owned dwell.	\$ 174,334	\$ 287,616	65.0	81.5	\$ 230,645	\$ 418,703

Source: Statistics Canada. Notes: incomes are for 2005 and 2000; rent/owner's payments are restricted to non-farm, non-reserve private dwellings.

Radium Hot Springs Village

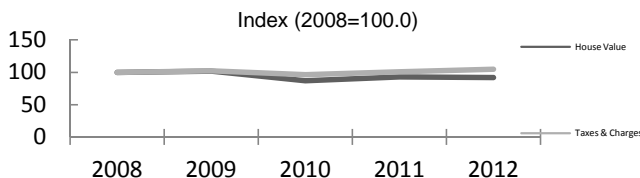
4		Labour Force by Industry (NAICS)					
		Radium Hot Springs			BC	% Distribution, 2006	
Industry	2001	2006	% Change	% change	Radium HSp	BC	
Total labour force	320	515	60.9	8.1	100.0	100.0	
Industry - Not applicable	-	-	-	-26.6	-	1.5	
All industries (Experienced LF)	320	515	60.9	8.9	100.0	98.5	
111-112 Farms	-	-	-	5.2	-	1.8	
113 Forestry and logging	-	40	-	-10.0	7.8	1.0	
114 Fishing, hunting and trapping	-	-	-	1.3	-	0.2	
1151/2 Support activities for farms	-	-	-	11.3	-	0.1	
1153 Support activities for forestry	-	-	-	-21.5	-	0.3	
21 Mining and oil and gas extraction	-	30	-	42.6	5.8	0.9	
22 Utilities	-	-	-	-3.4	-	0.5	
23 Construction	15	50	233.3	39.9	9.7	7.5	
31-33 Manufacturing	55	45	-18.2	-2.7	8.7	8.5	
311 Food manufacturing	-	-	-	3.6	-	1.0	
321 Wood product manufacturing	50	45	-10.0	-16.1	8.7	1.7	
322 Paper manufacturing	-	-	-	-13.5	-	0.6	
41 Wholesale trade	-	-	-	11.6	-	4.1	
44-45 Retail trade	20	45	125.0	6.9	8.7	11.2	
441 Motor vehicle and parts dealers	-	-	-	9.0	-	1.1	
445 Food and beverage stores	15	30	100.0	8.4	5.8	2.9	
448 Clothing & clothing accessories	-	10	-	9.2	1.9	1.1	
452 General merchandise stores	-	-	-	6.5	-	1.2	
48-49 Transportation & warehousing	-	20	-	0.6	3.9	5.2	
51 Information and cultural industries	10	-	-100.0	-5.3	-	2.6	
52 Finance and insurance	-	-	-	4.5	-	3.8	
53 Real estate & rental/leasing	-	-	-	22.1	-	2.3	
54 Prof'sonal, scientific & tech. serv.	25	10	-60.0	18.6	1.9	7.3	
55 Mgmt. of companies/ent'prises	-	-	-	126.6	-	0.1	
56 Admin+support, waste mgmnt srv.	15	25	66.7	20.4	4.9	4.4	
61 Educational services	-	10	-	9.2	1.9	6.9	
62 Health care and social assistance	15	25	66.7	6.5	4.9	9.6	
71 Arts, entertainment and recreation	15	40	166.7	11.3	7.8	2.3	
72 Accommodation and food services	105	135	28.6	7.7	26.2	8.1	
721 Accommodation services	65	100	53.8	2.5	19.4	1.7	
722 Food services & drinking places	35	35	-	9.2	6.8	6.4	
81 Other services (excl. public admin.)	30	20	-33.3	11.8	3.9	4.9	
91 Public administration	-	10	-	-2.0	1.9	5.0	
Special Aggregations							
Agriculture, Food and Beverage	-	-	-	5.8	-	2.9	
Fishing and Fish Processing	-	-	-	-3.3	-	0.5	
Logging and Forest Products	65	80	23.1	-14.7	15.5	3.7	
Mining and Mineral Products	-	30	-	17.1	5.8	2.1	

Source: Statistics Canada. Industry according to NAICS version used in each census. Unpublished data.

5		Business Locations- Number of Firms by Employment Size Range								
		Firms with no employees		Firms with employees		% change	E kootenay RD			
		E kootenay RD	BC	E kootenay RD	BC	E kootenay RD	1 to 19	20 to 49	50-199	200 Plus
2008		1,974	185,879	2,397	175,003	-	2,109	182	85	21
2009		2,048	186,541	2,459	176,124	2.6	2,169	198	73	19
2010		2,250	194,349	2,708	175,913	10.1	2,407	208	75	18
2011		2,231	195,290	2,662	173,589	-1.7	2,376	195	75	16

Source: Business Register, Statistics Canada. In some areas, boundary changes/geocoding changes may cause large changes.

6		Municipal Residential Taxes and Charges on a Representative House					
		Radium Hot Springs					
		House Value		Taxes & Charges			
Year	\$	% change	\$	% change			
2008	289,472		2,072				
2009	294,078	1.6	2,123	2.5			
2010	252,350	-14.2	2,000	-5.8			
2011	268,501	6.4	2,090	4.5			
2012	265,962	-0.9	2,173	4.0			



Source: Ministry of Community, Sport & Cultural Development http://www.cd.gov.bc.ca/lgd/infra/statistics_index.htm (No RD level figures)

Radium Hot Springs Village

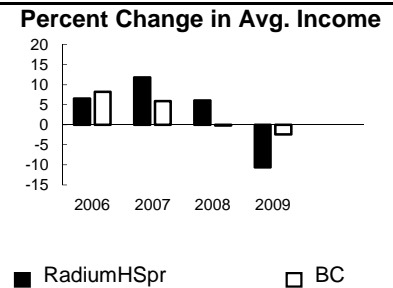
7	Values of Building Permits								
	Residential				Non-Residential		Total		Year
	Number of Units		Value \$'000		Value \$'000		Value \$'000		
Radium HSp	BC	Radium HSp	BC	Radium HSp	BC	Radium HSp	BC		
2007	-	40,932	-	8,611,723	-	3,932,968	-	12,544,691	2007
2008	121	30,110	-	6,899,289	-	3,677,866	-	10,577,155	2008
2009	4	18,607	1,118	4,491,075	115	3,138,810	1,233	7,629,885	2009
2010	3	28,984	987	6,705,888	1,596	3,017,921	2,583	9,723,809	2010
2011	-	25,745	462	6,113,406	414	3,136,361	876	9,249,767	2011

Source: Statistics Canada

Note: Detailed non-residential permits data can be found on our Website: www.bcstats.gov.bc.ca

A dash can indicate a nil report, a value of less than \$500, or non-reporting. P indicates 'preliminary'.

8	Personal Taxation Statistics						Percent Change in Avg. Income
	Total Income of All Returns						
	All Returns (number)		Average Income (\$)		% Change avg. income		
Year	RadiumHSp	BC	RadiumHSp	BC	RadiumHSp	BC	
2005	830	3,154,090	34,425	35,601	n/a	n/a	
2006	810	3,165,750	36,683	38,523	6.6	8.2	
2007	870	3,287,750	41,007	40,802	11.8	5.9	
2008	880	3,383,640	43,492	40,736	6.1	-0.2	
2009	850	3,406,860	38,853	39,754	-10.7	-2.4	



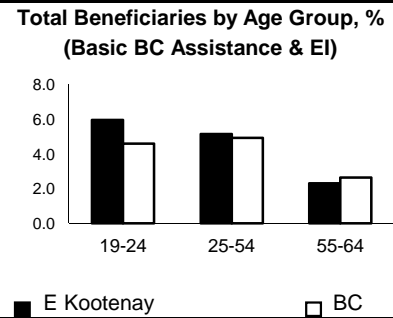
Taxation data available at: <http://www.bcstats.gov.bc.ca/data/dd/income.asp>

9	Source of Total Income 2009				% Distribution, Total Income					
	RadiumHSp		BC							
	\$Thousands	% of Total	% of Total							
Employment	18,982	57.5	63.7							
Pension	5,246	15.9	13.8							
Investment	3,879	11.7	9.8							
Self-Employed	1,822	5.5	5.3							
Other	2,561	7.8	5.3							
Tax Exempt	536	1.6	2.0							
Total	33,025	100.0	100.0							



Source: Canada Revenue Agency. Areas are defined by postal codes and may not match municipal boundaries.

9	Dependency on the Safety Net						Total Beneficiaries by Age Group, % (Basic BC Assistance & EI)
	Percentage of Population by Age Receiving Benefits - September 2009						
	Age Group	BC Basic* Income Assistance Recipients (%)		Employment Insurance Beneficiaries (%)		Total of BC Basic Income Assistance & EI Beneficiaries (%)	
E Kootenay		BC	E Kootenay	BC	E Kootenay	BC	
Under 19	2.6	2.7					
19-24	2.3	2.1	3.9	2.6	6.0	4.6	
25-54	1.7	1.9	3.6	3.1	5.1	4.9	
55-64	0.4	0.7	1.9	2.0	2.3	2.6	
19-64	1.4	1.7	3.2	2.8	4.6	4.4	



* On temporary assistance only. Excluded are those on Continuous Assistance, aboriginals living on reserve, seniors/OAS, & children living with relatives.

Source: BC Stats (using administrative files from the BC Ministry of Housing & Social Development, and Human Resources & Social Development Canada)

Note: EI Beneficiaries reports now include regular, fishing and employment benefits, work sharing and support measures. The reports exclude sickness, maternity and parental benefits.

10	Business Formations and Failures								
	Incorporations				Bankruptcies				
	Number		Year	Cranbrook		Kootenay DR		BC	
Radium HSp	BC	Business		Consumer	Business	Consumer	Business	Consumer	
2007	6	34,036	2005	2	62	n.a.	n.a.	786	8,168
2008	3	30,085	2006	8	46	31	224	585	7,020
2009	4	26,431	2007	1	33	14	197	470	6,651
2010	5	30,305	2008	3	36	16	180	454	7,293
2011	5	30,844	2009	1	69	9	339	380	10,639

Source: BC Ministry of Finance

Source: Office of the Superintendent of Bankruptcy, Government of Canada

Incorporations are counted in municipality of the registered office address which may differ from the actual business location.

Note: Bankruptcy is by urban postal code forward sortation area and is counted where it is filed.