

## Rosland City

<b>1</b>	<b>General</b>
<p>Incorporated in 1897, Rosland has a total land area of 57.97 square km (2006 Census). By highway the City is 8 km southwest of Trail. Rosland is in the Kootenay-Boundary Regional District.</p>	

<b>2</b>	<b>Population Estimates</b>				<b>Age Distribution</b>				
<b>Annual Estimates</b>					<b>2011 Census</b>			<b>% Distribution, 2011 *</b>	
Year	Rosland	% Change Prev. Year	BC	% Change Prev. Year	Rosland	Male	Female	Rosland	BC
					All ages	1,780	1,780	100.0	100.0
2007	3,333	n/a	4,309,632	n/a	0 - 14	340	315	18.5	15.4
2008	3,476	4.3	4,384,047	1.7	15 - 24	180	205	10.7	12.6
2009	3,536	1.7	4,459,947	1.7	25 - 44	500	525	28.8	26.3
2010	3,553	0.5	4,529,647	1.6	45 - 64	565	540	30.9	30.0
2011	3,563	0.3	4,573,321	1.0	65 +	195	195	11.1	15.7

Source: Statistics Canada (as of July 1, includes estimate of Census undercount)

\* based on published totals, both sexes

**2006 Census Profiles can be found on our Website at <http://www.bcstats.gov.bc.ca/census.asp>**

<b>3</b>	<b>Selected Census Characteristics</b>						
			<b>Rosland</b>			<b>British Columbia</b>	
<b>Characteristics</b>	<b>2001</b>	<b>2006</b>	<b>% Change</b>	<b>% Change</b>	<b>2001</b>	<b>2006</b>	
Population	3,646	3,278	- 10.1	5.3	3,907,738	4,113,487	
Population (by citizenship)	3,605	3,250	- 9.8	5.3	3,868,875	4,074,385	
Non-immigrant	3,150	2,855	- 9.4	2.9	2,821,870	2,904,240	
Immigrant	450	370	- 17.8	10.8	1,009,820	1,119,215	
Labour force (15+ yrs.)	2,070	1,885	- 8.9	8.1	2,059,950	2,226,380	
Employees	1,690	1,455	- 13.9	9.2	1,715,600	1,873,050	
Self-employed	355	380	7.0	7.4	291,455	313,000	
Participation rate [ppt.=percentage points]	71.8%	71.3%	-0.5 ppt.	0.4 ppt.	65.2%	65.6%	
Unemployment rate	8.5%	9.0%	0.5 ppt.	-2.5 ppt.	8.5%	6.0%	
Total population 25 to 64 years	2,080	1,910	- 8.2	6.5	2,144,050	2,284,465	
No certificate, diploma or degree	245	120	- 51.0	- 40.1	471,470	282,200	
High school certificate or equivalent	385	345	- 10.4	27.7	462,925	591,275	
Apprenticeship/trades certificate or diploma	300	260	- 13.3	- 7.4	295,180	273,450	
College, CEGEP or other cert. or diploma	500	425	- 15.0	11.3	401,760	447,005	
University certificate, diploma or degree	645	760	17.8	34.7	512,715	690,535	
Bachelor's degree	350	450	28.6	23.0	282,800	347,715	
Census families	1,015	955	- 5.9	6.9	1,086,030	1,161,420	
Lone-parent families	130	125	- 3.8	4.0	168,420	175,165	
Households	1,440	1,350	- 6.3	7.1	1,534,335	1,643,150	
1-family households	1,010	955	- 5.4	6.1	1,012,925	1,074,850	
Multi-family households	-	-	-	18.4	35,050	41,510	
Non-family households	430	395	- 8.1	8.3	486,355	526,785	
Median Income (2000 & 2005)	\$ 22,998	\$ 31,715	37.9	12.5	\$ 22,095	\$ 24,867	
Males	\$ 36,151	\$ 41,693	15.3	9.0	\$ 28,976	\$ 31,598	
Females	\$ 15,136	\$ 25,178	66.3	14.0	\$ 17,546	\$ 19,997	
Median Family Income (2000 & 2005)	\$ 63,450	\$ 79,697	25.6	20.0	\$ 54,840	\$ 65,787	
Economic Families	1,010	955	- 5.4	6.5	1,044,850	1,112,810	
2001 Incidence, low income    2006 Prevalence, low income	8.0%	7.9%	-0.1 ppt.	-0.6 ppt.	13.9%	13.3%	
Unattached persons, 15+	510	445	- 12.7	4.7	576,825	603,880	
Incidence, low income	45.7%	16.9%	-28.8 ppt.	-1.4 ppt.	38.1%	36.7%	
Population in private hh.	3,605	3,250	- 9.8	5.1	3,785,270	3,978,215	
Incidence, low income	12.3%	8.0%	-4.3 ppt.	-0.5 ppt.	17.8%	17.3%	
Dwellings	1,440	1,350	- 6.3	7.1	1,534,335	1,643,150	
Owned	1,180	1,165	- 1.3	12.5	1,017,485	1,145,045	
Rented	255	190	- 25.5	- 3.6	512,360	493,995	
Average gross rent	\$ 625	\$ 575	- 8.0	10.4	\$ 750	\$ 828	
Average owners' payments	\$ 741	\$ 933	25.9	17.1	\$ 904	\$ 1,059	
Avg. value, owned dwell.	\$ 122,032	\$ 242,668	98.9	81.5	\$ 230,645	\$ 418,703	

Source: Statistics Canada. Notes: incomes are for 2005 and 2000; rent/owner's payments are restricted to non-farm, non-reserve private dwellings.

## Rosland City

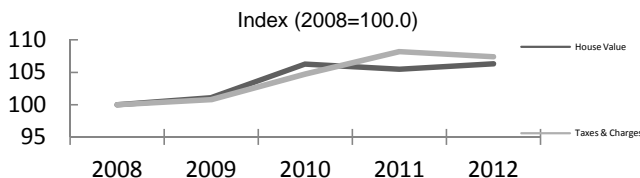
4		Labour Force by Industry (NAICS)					
		Rosland			BC	% Distribution, 2006	
Industry		2001	2006	% Change	% change	Rosland	BC
Total labour force		2,070	1,885	- 8.9	8.1	100.0	100.0
Industry - Not applicable		25	45	80.0	- 26.6	2.4	1.5
<b>All industries (Experienced LF)</b>		2,045	1,840	- 10.0	8.9	97.6	98.5
111-112 Farms		15	-	- 100.0	5.2	-	1.8
113 Forestry and logging		-	-	-	- 10.0	-	1.0
114 Fishing, hunting and trapping		-	-	-	1.3	-	0.2
1151/2 Support activities for farms		-	-	-	11.3	-	0.1
1153 Support activities for forestry		30	35	16.7	- 21.5	1.9	0.3
21 Mining and oil and gas extraction		10	10	-	42.6	0.5	0.9
22 Utilities		30	25	- 16.7	- 3.4	1.3	0.5
23 Construction		155	210	35.5	39.9	11.1	7.5
31-33 Manufacturing		280	305	8.9	- 2.7	16.2	8.5
311 Food manufacturing		-	20	-	3.6	1.1	1.0
321 Wood product manufacturing		25	15	- 40.0	- 16.1	0.8	1.7
322 Paper manufacturing		-	10	-	- 13.5	0.5	0.6
41 Wholesale trade		10	-	- 100.0	11.6	-	4.1
44-45 Retail trade		195	240	23.1	6.9	12.7	11.2
441 Motor vehicle and parts dealers		-	15	-	9.0	0.8	1.1
445 Food and beverage stores		45	75	66.7	8.4	4.0	2.9
448 Clothing & clothing accessories		-	-	-	9.2	-	1.1
452 General merchandise stores		-	15	-	6.5	0.8	1.2
48-49 Transportation & warehousing		10	10	-	0.6	0.5	5.2
51 Information and cultural industries		65	15	- 76.9	- 5.3	0.8	2.6
52 Finance and insurance		85	30	- 64.7	4.5	1.6	3.8
53 Real estate & rental/leasing		35	15	- 57.1	22.1	0.8	2.3
54 Prof'sonal, scientific & tech. serv.		110	125	13.6	18.6	6.6	7.3
55 Mgmt. of companies/ent'prises		-	-	-	126.6	-	0.1
56 Admin+support, waste mgmnt srv.		30	55	83.3	20.4	2.9	4.4
61 Educational services		215	140	- 34.9	9.2	7.4	6.9
62 Health care and social assistance		200	300	50.0	6.5	15.9	9.6
71 Arts, entertainment and recreation		110	60	- 45.5	11.3	3.2	2.3
72 Accommodation and food services		210	125	- 40.5	7.7	6.6	8.1
721 Accommodation services		55	40	- 27.3	2.5	2.1	1.7
722 Food services & drinking places		155	85	- 45.2	9.2	4.5	6.4
81 Other services (excl. public admin.)		65	55	- 15.4	11.8	2.9	4.9
91 Public administration		185	80	- 56.8	- 2.0	4.2	5.0
Special Aggregations	Agriculture, Food and Beverage	10	20	100.0	5.8	1.1	2.9
	Fishing and Fish Processing	-	-	-	- 3.3	-	0.5
	Logging and Forest Products	55	60	9.1	- 14.7	3.2	3.7
	Mining and Mineral Products	255	220	- 13.7	17.1	11.7	2.1

Source: Statistics Canada. Industry according to NAICS version used in each census. Unpublished data.

5		Business Locations- Number of Firms by Employment Size Range								
		Firms with no employees		Firms with employees		% change	Koot-Bound RD			
		Koot-Bound RD	BC	Koot-Bound R	BC	Koot-Bound RD	1 to 19	20 to 49	50-199	200 Plus
2008		1,030	185,879	1,092	175,003	-	968	83	33	8
2009		1,036	186,541	1,157	176,124	6.0	1,035	78	36	8
2010		1,083	194,349	1,192	175,913	3.0	1,070	77	39	6
2011		1,084	195,290	1,185	173,589	- 0.6	1,061	81	36	7

Source: Business Register, Statistics Canada. In some areas, boundary changes/geocoding changes may cause large changes.

6		Municipal Residential Taxes and Charges on a Representative House					
		Rosland					
		House Value		Taxes & Charges			
Year	\$	% change	\$	% change			
2008	244,433		3,566				
2009	247,135	1.1	3,594	0.8			
2010	259,723	5.1	3,735	3.9			
2011	257,760	-0.8	3,858	3.3			
2012	259,867	0.8	3,830	-0.7			



Source: Ministry of Community, Sport & Cultural Development [http://www.cd.gov.bc.ca/lgd/infra/statistics\\_index.htm](http://www.cd.gov.bc.ca/lgd/infra/statistics_index.htm) (No RD level figures)

## Rosland City

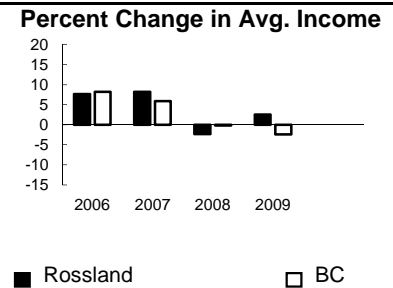
7	Values of Building Permits									
	Residential					Non-Residential		Total		Year
	Number of Units		Value \$'000			Value \$'000		Value \$'000		
Rosland	BC	Rosland	BC	Rosland	BC	Rosland	BC			
2007	40	40,932	17,220	8,611,723	7,110	3,932,968	24,330	12,544,691	2007	
2008	31	30,110	9,222	6,899,289	1,023	3,677,866	10,245	10,577,155	2008	
2009	11	18,607	6,248	4,491,075	95	3,138,810	6,343	7,629,885	2009	
2010	11	28,984	5,711	6,705,888	2,263	3,017,921	7,974	9,723,809	2010	
2011	15	25,745	7,399	6,113,406	149	3,136,361	7,548	9,249,767	2011	

Source: Statistics Canada

Note: Detailed non-residential permits data can be found on our Website: www.bcstats.gov.bc.ca

A dash can indicate a nil report, a value of less than \$500, or non-reporting. P indicates 'preliminary'.

8	Personal Taxation Statistics						Percent Change in Avg. Income	
	Total Income of All Returns							
	All Returns (number)		Average Income (\$)		% Change avg. income			
Year	Rosland	BC	Rosland	BC	Rosland	BC		
2005	2,660	3,154,090	39,091	35,601	n/a	n/a		
2006	2,730	3,165,750	42,088	38,523	7.7	8.2		
2007	2,880	3,287,750	45,531	40,802	8.2	5.9		
2008	2,990	3,383,640	44,477	40,736	-2.3	-0.2		
2009	2,970	3,406,860	45,595	39,754	2.5	-2.4		



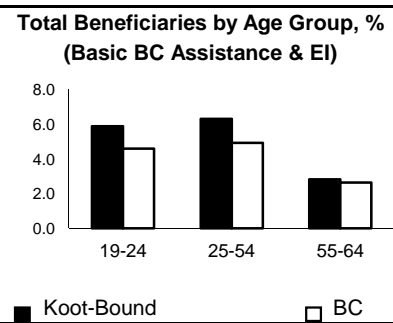
Taxation data available at: <http://www.bcstats.gov.bc.ca/data/dd/income.asp>

9	Source of Total Income 2009				% Distribution, Total Income					
	Rosland		BC							
	\$Thousands	% of Total	% of Total							
Employment	86,188	63.6	63.7							
Pension	16,591	12.3	13.8							
Investment	13,835	10.2	9.8							
Self-Employed	9,036	6.7	5.3							
Other	8,686	6.4	5.3							
Tax Exempt	1,066	0.8	2.0							
Total	135,416	100.0	100.0							



Source: Canada Revenue Agency. Areas are defined by postal codes and may not match municipal boundaries.

9	Dependency on the Safety Net						Total Beneficiaries by Age Group, % (Basic BC Assistance & EI)		
	Percentage of Population by Age Receiving Benefits - September 2009								
	Age Group	BC Basic* Income Assistance Recipients (%)		Employment Insurance Beneficiaries (%)		Total of BC Basic Income Assistance & EI Beneficiaries (%)			
Koot-Bound		BC	Koot-Bound	BC	Koot-Bound	BC			
Under 19	3.0	2.7							
19-24	2.2	2.1	3.7	2.6	5.9	4.6			
25-54	2.5	1.9	3.9	3.1	6.3	4.9			
55-64	0.9	0.7	1.9	2.0	2.8	2.6			
19-64	2.0	1.7	3.3	2.8	5.3	4.4			



\* On temporary assistance only. Excluded are those on Continuous Assistance, aboriginals living on reserve, seniors/OAS, & children living with relatives.

Source: BC Stats (using administrative files from the BC Ministry of Housing & Social Development, and Human Resources & Social Development Canada)

Note: EI Beneficiaries reports now include regular, fishing and employment benefits, work sharing and support measures. The reports exclude sickness, maternity and parental benefits.

10	Business Formations and Failures									
	Incorporations				Bankruptcies					
	Number				Trials		Kootenay DR		BC	
Year	Rosland	BC	Year	Business	Consumer	Business	Consumer	Business	Consumer	
2007	56	34,036	2005	2	23	n.a.	n.a.	786	8,168	
2008	22	30,085	2006	1	17	31	224	585	7,020	
2009	20	26,431	2007	0	17	14	197	470	6,651	
2010	13	30,305	2008	0	22	16	180	454	7,293	
2011	14	30,844	2009	1	18	9	339	380	10,639	

Source: BC Ministry of Finance

Source: Office of the Superintendent of Bankruptcy, Government of Canada

Incorporations are counted in municipality of the registered office address which may differ from the actual business location.

Note: Bankruptcy is by urban postal code forward sortation area and is counted where it is filed.