

Salmo Village

1	General
<p>Incorporated in 1946, Salmo has a total land area of 2.38 square km (2006 Census). By highway the Village is 40 km south of Nelson, 41 km east of Trail, and 39 km southeast of Castlegar. Salmo is in the Central Kootenay Regional District.</p>	

2					Population Estimates					Age Distribution					
Annual Estimates					2006 Census					% Distribution, 2006 *					
Year	Salmo	% Change Prev. Year	BC	% Change Prev. Year	Salmo	Male	Female	Salmo	BC	All ages	0 - 14	15 - 24	25 - 44	45 - 64	65 +
2007	1,027	n/a	4,309,632	n/a	All ages	475	530	100.0	100.0						
2008	1,048	2.0	4,384,047	1.7	0 - 14	90	105	19.3	16.5						
2009	1,061	1.2	4,459,947	1.7	15 - 24	45	55	9.4	13.1						
2010	1,070	0.8	4,529,647	1.6	25 - 44	110	115	22.3	27.4						
2011	1,073	0.3	4,573,321	1.0	45 - 64	145	150	29.7	28.4						
					65 +	85	110	18.8	14.6						

Source: Statistics Canada (as of July 1, includes estimate of Census undercount)

* based on published totals, both sexes

2006 Census Profiles can be found on our Website at <http://www.bcstats.gov.bc.ca/census.asp>

3							Selected Census Characteristics						
							Salmo			British Columbia			
Characteristics	2001	2006	% Change	% Change	2001	2006	2001	2006	2001	2006	2001	2006	
Population	1,120	1,007	- 10.1	5.3	3,907,738	4,113,487							
Population (by citizenship)	1,120	1,010	- 9.8	5.3	3,868,875	4,074,385							
Non-immigrant	1,040	910	- 12.5	2.9	2,821,870	2,904,240							
Immigrant	80	60	- 25.0	10.8	1,009,820	1,119,215							
Labour force (15+ yrs.)	485	405	- 16.5	8.1	2,059,950	2,226,380							
Employees	375	355	- 5.3	9.2	1,715,600	1,873,050							
Self-employed	95	40	- 57.9	7.4	291,455	313,000							
Participation rate [ppt.=percentage points]	55.7%	48.5%	-7.2 ppt.	0.4 ppt.	65.2%	65.6%							
Unemployment rate	14.4%	15.0%	0.6 ppt.	-2.5 ppt.	8.5%	6.0%							
Total population 25 to 64 years	560	565	0.9	6.5	2,144,050	2,284,465							
No certificate, diploma or degree	235	140	- 40.4	- 40.1	471,470	282,200							
High school certificate or equivalent	100	180	80.0	27.7	462,925	591,275							
Apprenticeship/trades certificate or diploma	90	70	- 22.2	- 7.4	295,180	273,450							
College, CEGEP or other cert. or diploma	90	115	27.8	11.3	401,760	447,005							
University certificate, diploma or degree	35	55	57.1	34.7	512,715	690,535							
Bachelor's degree	10	15	50.0	23.0	282,800	347,715							
Census families	315	325	3.2	6.9	1,086,030	1,161,420							
Lone-parent families	55	60	9.1	4.0	168,420	175,165							
Households	480	460	- 4.2	7.1	1,534,335	1,643,150							
1-family households	320	325	1.6	6.1	1,012,925	1,074,850							
Multi-family households	-	-	-	18.4	35,050	41,510							
Non-family households	165	135	- 18.2	8.3	486,355	526,785							
Median Income (2000 & 2005)	\$ 20,271	\$ 18,177	- 10.3	12.5	\$ 22,095	\$ 24,867							
Males	\$ 25,029	\$ 26,947	7.7	9.0	\$ 28,976	\$ 31,598							
Females	\$ 16,354	\$ 15,232	- 6.9	14.0	\$ 17,546	\$ 19,997							
Median Family Income (2000 & 2005)	\$ 39,397	\$ 39,080	- 0.8	20.0	\$ 54,840	\$ 65,787							
Economic Families	320	325	1.6	6.5	1,044,850	1,112,810							
2001 Incidence, low income	12.6%	15.4%	2.8 ppt.	-0.6 ppt.	13.9%	13.3%							
2006 Prevalence, low income													
Unattached persons, 15+	190	135	- 28.9	4.7	576,825	603,880							
Incidence, low income	53.4%	25.9%	-27.5 ppt.	-1.4 ppt.	38.1%	36.7%							
Population in private hh.	1,115	1,005	- 9.9	5.1	3,785,270	3,978,215							
Incidence, low income	19.4%	14.9%	-4.5 ppt.	-0.5 ppt.	17.8%	17.3%							
Dwellings	480	460	- 4.2	7.1	1,534,335	1,643,150							
Owned	345	370	7.2	12.5	1,017,485	1,145,045							
Rented	140	85	- 39.3	- 3.6	512,360	493,995							
Average gross rent	\$ 583	\$ 580	- 0.5	10.4	\$ 750	\$ 828							
Average owners' payments	\$ 638	\$ 645	1.1	17.1	\$ 904	\$ 1,059							
Avg. value, owned dwell.	\$ 106,927	\$ 118,584	10.9	81.5	\$ 230,645	\$ 418,703							

Source: Statistics Canada. Notes: incomes are for 2005 and 2000; rent/owner's payments are restricted to non-farm, non-reserve private dwellings.

Salmo Village

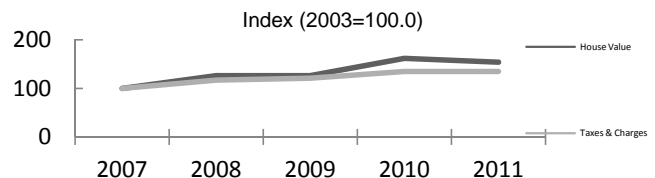
4		Labour Force by Industry (NAICS)					
		Salmo			BC	% Distribution, 2006	
Industry		2001	2006	% Change	% change	Salmo	BC
Total labour force		485	405	- 16.5	8.1	100.0	100.0
Industry - Not applicable		-	-	-	- 26.6	-	1.5
All industries (Experienced LF)		480	400	- 16.7	8.9	98.8	98.5
111-112 Farms		10	10	-	5.2	2.5	1.8
113 Forestry and logging		25	20	- 20.0	- 10.0	4.9	1.0
114 Fishing, hunting and trapping		-	10	-	1.3	2.5	0.2
1151/2 Support activities for farms		-	-	-	11.3	-	0.1
1153 Support activities for forestry		-	10	-	- 21.5	2.5	0.3
21 Mining and oil and gas extraction		-	-	-	42.6	-	0.9
22 Utilities		10	-	- 100.0	- 3.4	-	0.5
23 Construction		25	60	140.0	39.9	14.8	7.5
31-33 Manufacturing		85	45	- 47.1	- 2.7	11.1	8.5
311 Food manufacturing		-	-	-	3.6	-	1.0
321 Wood product manufacturing		60	30	- 50.0	- 16.1	7.4	1.7
322 Paper manufacturing		-	-	-	- 13.5	-	0.6
41 Wholesale trade		15	15	-	11.6	3.7	4.1
44-45 Retail trade		45	30	- 33.3	6.9	7.4	11.2
441 Motor vehicle and parts dealers		-	-	-	9.0	-	1.1
445 Food and beverage stores		15	10	- 33.3	8.4	2.5	2.9
448 Clothing & clothing accessories		-	-	-	9.2	-	1.1
452 General merchandise stores		-	-	-	6.5	-	1.2
48-49 Transportation & warehousing		40	10	- 75.0	0.6	2.5	5.2
51 Information and cultural industries		-	10	-	- 5.3	2.5	2.6
52 Finance and insurance		20	20	-	4.5	4.9	3.8
53 Real estate & rental/leasing		10	-	- 100.0	22.1	-	2.3
54 Prof'sonal, scientific & tech. serv.		30	15	- 50.0	18.6	3.7	7.3
55 Mgmt. of companies/ent'prises		-	-	-	126.6	-	0.1
56 Admin+support, waste mgmnt srv.		20	-	- 100.0	20.4	-	4.4
61 Educational services		20	20	-	9.2	4.9	6.9
62 Health care and social assistance		45	30	- 33.3	6.5	7.4	9.6
71 Arts, entertainment and recreation		15	20	33.3	11.3	4.9	2.3
72 Accommodation and food services		40	30	- 25.0	7.7	7.4	8.1
721 Accommodation services		25	25	-	2.5	6.2	1.7
722 Food services & drinking places		15	10	- 33.3	9.2	2.5	6.4
81 Other services (excl. public admin.)		10	40	300.0	11.8	9.9	4.9
91 Public administration		15	-	- 100.0	- 2.0	-	5.0
Special Aggregations	Agriculture, Food and Beverage	-	-	-	5.8	-	2.9
	Fishing and Fish Processing	-	10	-	- 3.3	2.5	0.5
	Logging and Forest Products	80	65	- 18.8	- 14.7	16.0	3.7
	Mining and Mineral Products	30	15	- 50.0	17.1	3.7	2.1

Source: Statistics Canada. Industry according to NAICS version used in each census. Unpublished data.

5		Business Locations- Number of Firms by Employment Size Range								
		Firms with no employees		Firms with employees		% change		C Kootenay RD		
		C Kootenay RD	BC	C Kootenay RI	BC	C Kootenay RD	1 to 19	20 to 49	50-199	200 Plus
2008		2,189	185,879	2,502	175,003	-	2,293	134	63	12
2009		2,138	186,541	2,367	176,124	- 5.4	2,170	123	61	13
2010		2,233	194,349	2,408	175,913	1.7	2,204	128	64	12
2011		2,164	195,290	2,381	173,589	- 1.1	2,194	119	58	10

Source: Business Register, Statistics Canada. In some areas, boundary changes/geocoding changes may cause large changes.

6		Municipal Residential Taxes and Charges on a Representative House					
		Salmo					
		House Value		Taxes & Charges			
Year	\$	% change	\$	% change			
2007	103,177		1,511				
2008	130,496	26.5	1,773	17.3			
2009	130,605	0.1	1,827	3.1			
2010	166,968	27.8	2,038	11.6			
2011	159,145	-4.7	2,043	0.2			



Source: Ministry of Community Development http://www.cd.gov.bc.ca/lgd/infra/statistics_index.htm (No RD level figures)

Salmo Village

7	Values of Building Permits									
	Residential					Non-Residential		Total		Year
	Number of Units		Value \$'000			Value \$'000		Value \$'000		
Salmo	BC	Salmo	BC	Salmo	BC	Salmo	BC			
2007	4	40,932	877	8,611,723	26	3,932,968	903	12,544,691	2007	
2008	3	30,110	509	6,899,289	-	3,677,866	509	10,577,155	2008	
2009	3	18,607	480	4,491,075	1,181	3,138,810	1,661	7,629,885	2009	
2010	2	28,984	561	6,705,888	-	3,017,921	561	9,723,809	2010	
2011	4	25,745	473	6,113,406	-	3,136,361	473	9,249,767	2011	

Source: Statistics Canada

Note: Detailed non-residential permits data can be found on our Website: www.bcstats.gov.bc.ca

A dash can indicate a nil report, a value of less than \$500, or non-reporting. P indicates 'preliminary'.

8	Personal Taxation Statistics					Percent Change in Avg. Income	
	Total Income of All Returns						
Year	All Returns (number)		Average Income (\$)		% Change avg. income		
	Salmo	BC	Salmo	BC	Salmo	BC	
2005	1,480	3,154,090	25,772	35,601	n/a	n/a	
2006	1,510	3,165,750	27,552	38,523	6.9	8.2	
2007	1,550	3,287,750	30,252	40,802	9.8	5.9	
2008	1,550	3,383,640	29,163	40,736	-3.6	-0.2	
2009	1,560	3,406,860	28,164	39,754	-3.4	-2.4	
Taxation data available at : http://www.bcstats.gov.bc.ca/data/dd/income.asp							

Source of Total Income 2009				% Distribution, Total Income					
	Salmo		BC	Employment	Pension	Investment	Self-Emply'd	Other	Tax Exempt
	\$Thousands	% of Total							
Employment	26,603	60.5	63.5	60	65	5	5	5	5
Pension	7,498	17.1	11.9	15	10	10	10	10	10
Investment	1,761	4.0	11.4	5	5	5	5	5	5
Self-Employed	2,285	5.2	5.7	5	5	5	5	5	5
Other	3,007	6.8	4.5	5	5	5	5	5	5
Tax Exempt	2,781	6.3	1.9	5	5	5	5	5	5
Total	43,936	100.0	100.0						

Source : Canada Revenue Agency. Areas are defined by postal codes and may not match municipal boundaries.

9	Dependency on the Safety Net						Total Beneficiaries by Age Group, % (Basic BC Assistance & EI)		
	Percentage of Population by Age Receiving Benefits - September 2009								
Age Group	BC Basic* Income Assistance Recipients (%)		Employment Insurance Beneficiaries (%)		Total of BC Basic Income Assistance & EI Beneficiaries (%)		19-24	25-54	55-64
	C Kootenay	BC	C Kootenay	BC	C Kootenay	BC			
Under 19	3.4	2.7					6.0	4.5	
19-24	2.3	2.1	3.6	2.6	5.8	4.6			
25-54	2.4	1.9	4.1	3.1	6.4	4.9	6.5	4.8	
55-64	0.6	0.7	2.0	2.0	2.6	2.6	2.5	2.5	2.5
19-64	1.9	1.7	3.5	2.8	5.3	4.4			

* On temporary assistance only. Excluded are those on Continuous Assistance, aboriginals living on reserve, seniors/OAS, & children living with relatives.

Source: BC Stats (using administrative files from the BC Ministry of Housing & Social Development, and Human Resources & Social Development Canada)

Note: EI Beneficiaries reports now include regular, fishing and employment benefits, work sharing and support measures. The reports exclude sickness, maternity and parental benefits.

10	Business Formations and Failures								
	Incorporations			Bankruptcies					
Year	Number		Year	Nelson		Kootenay DR		BC	
	Salmo	BC		Business	Consumer	Business	Consumer	Business	Consumer
2007	2	34,036	2005	5	19	n.a.	n.a.	786	8,168
2008	2	30,085	2006	7	21	31	224	585	7,020
2009	1	26,431	2007	3	16	14	197	470	6,651
2010	1	30,305	2008	2	14	16	180	454	7,293
2011	2	30,844	2009	0	39	9	339	380	10,639

Source: BC Ministry of Finance

Source: Office of the Superintendent of Bankruptcy, Government of Canada

Incorporations are counted in municipality of the registered office address which may differ from the actual business location.

Note: Bankruptcy is by urban postal code forward sortation area and is counted where it is filed.