



COLUMBIA BASIN
RDI
RURAL DEVELOPMENT INSTITUTE

CONNECT • UNDERSTAND • MOBILIZE

Association of Kootenay Boundary Local Governments (AKBLG) Employment Lands & the Site Locator Tool

April 2014

Terri MacDonald

Regional Innovation Chair

Columbia Basin Rural Development Institute

Jonathan Buttle

Columbia Basin Rural Development Institute

Selkirk College



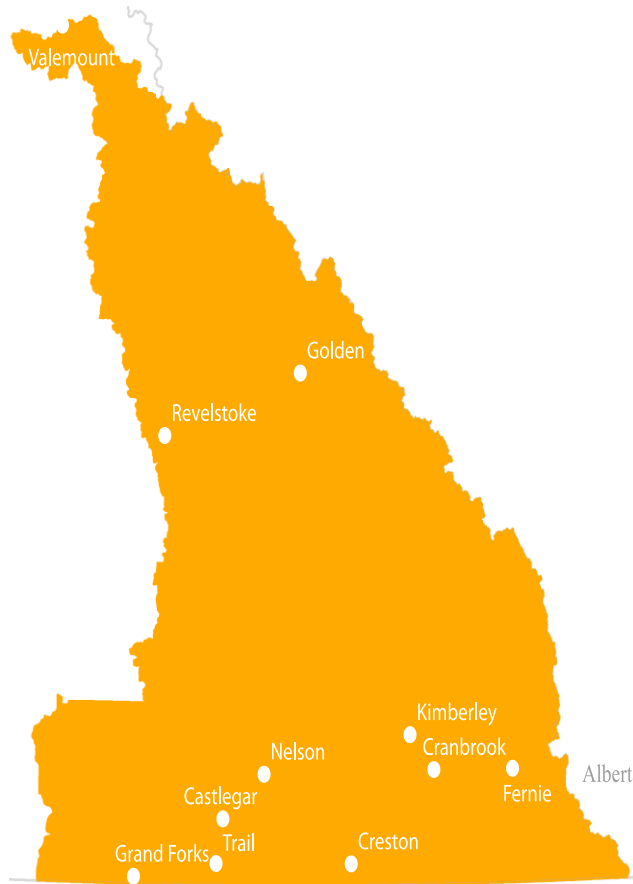
Agenda

- **Overview of Employment Lands Project History**
- **Economic Assets Map**
- **Employment Lands Analysis**
 - Insufficient Lands?
 - Underutilized Lands!
 - Development Pressures?!?
- **The Site Locator Tool**
- **Future Development**





Employment Lands Project Overview



CORE PROJECT GOALS

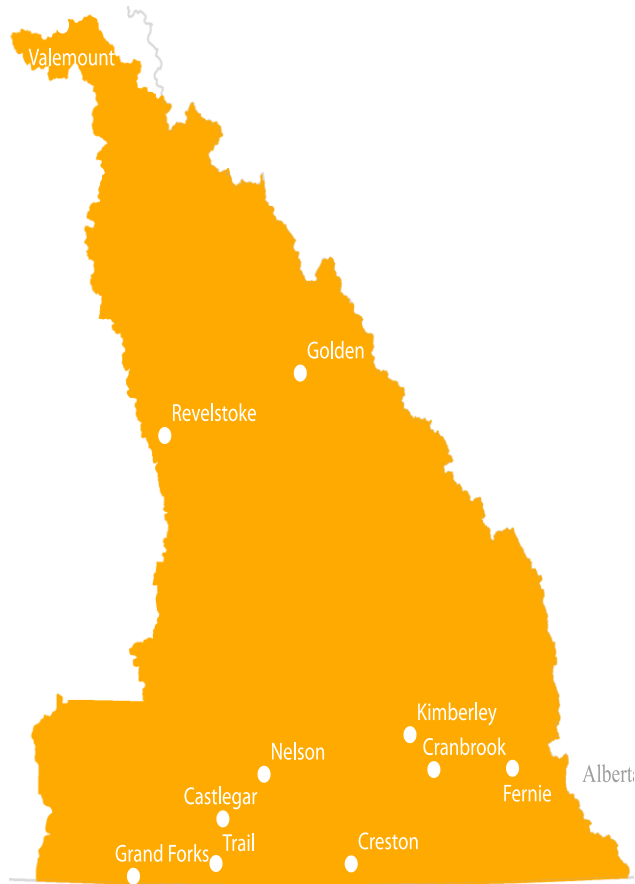
- On-line economic assets map;
- Stakeholder engagement; and
- Assessment of *Employment Lands*.

ADDITIONAL GOALS

- Site Locator Tool;
- Analysis of the potential for development conflict



Employment Lands Project Overview



Evolution of the Question

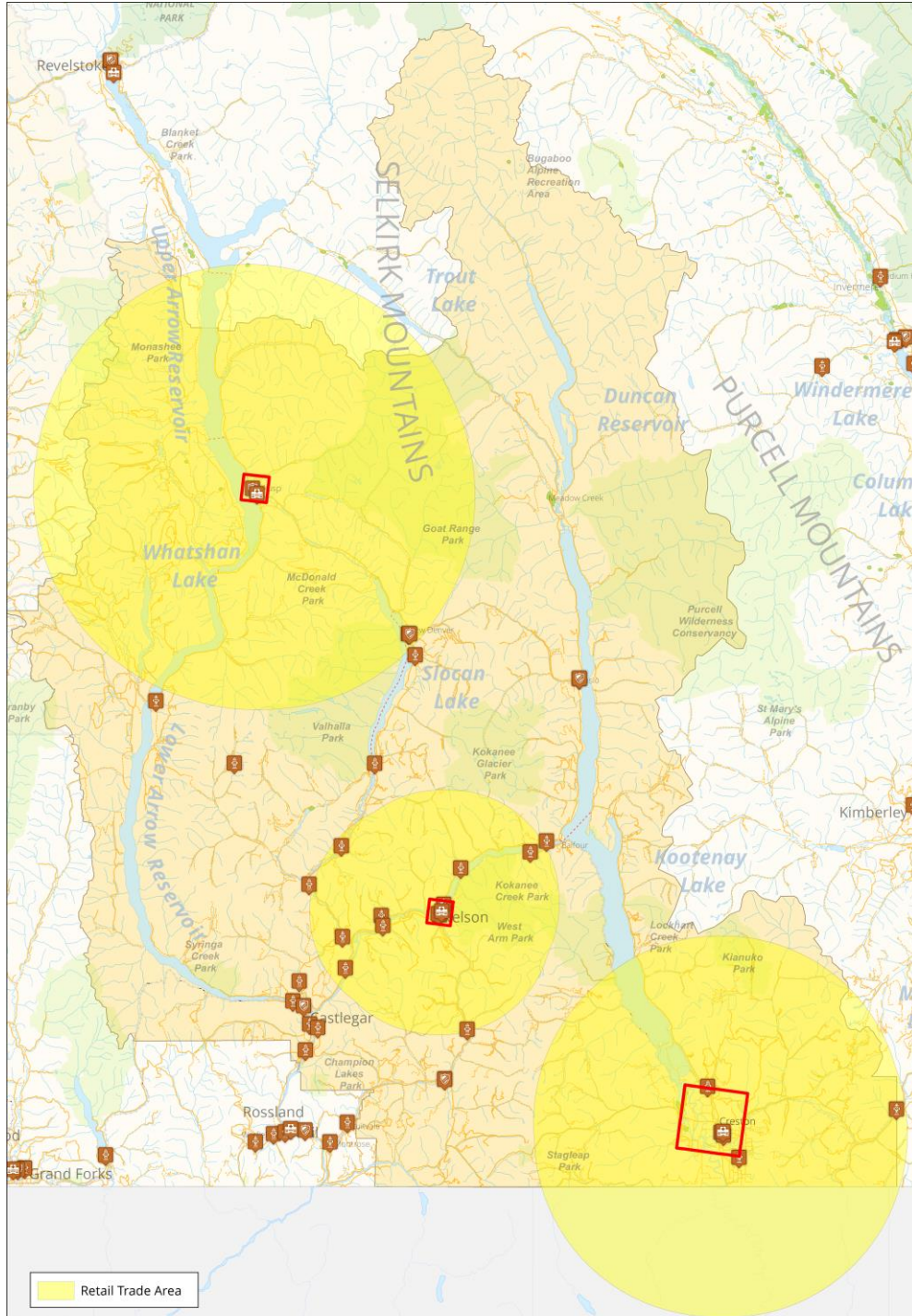
- Where do we find new lands to fill the supply gaps?
 - Political Capital
 - Any new lands MUST meet a need (Demand)
- Do we need new lands?
- **Who** needs new lands (Demand)?
- Are there underutilized lands?
- What about development conflicts?



Asset Mapping











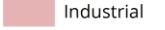

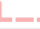
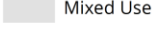


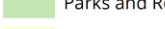

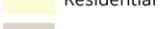

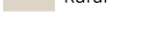
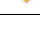
What are “Economic Assets”

- The infrastructure (physical and administrative) that facilitates economic activity.
 - Cadastral Fabric:
 - Zoning, Parcels, Buildings, and Ownership
 - Physical Infrastructure:
 - Roads, Rail, Airports
 - Hospitals, Schools, Government Service Facilities
 - Services (water, electricity etc.) where available
 - Political Boundaries
 - Regional Districts
 - OCPs
 - Forest Tenures, Mining Tenures, ALR



Retail Trade Area

Legend

- | | | | | | | |
|-------------------------------------------------------------------------------------|-----------------------|-------------------------------------------------------------------------------------|-----------------------|---------------|-------------------------------------------------------------------------------------|----------------------|
|  | Hospitals |  | Farmers Markets | Zoning | | |
|  | Health Centres |  | Museums | |  | Agricultural |
|  | Colleges |  | Galleries And Centres | |  | Commercial |
|  | Schools |  | Historic Places | |  | Industrial |
|  | RCMP Police Stations |  | Municipal Boundaries | |  | Mixed Use |
|  | Fire Stations |  | Parcels | |  | Parks and Recreation |
|  | Recreation Facilities | | | |  | Residential |
|  | Libraries | | | |  | Rural |
|  | Golf Courses | | | | | |

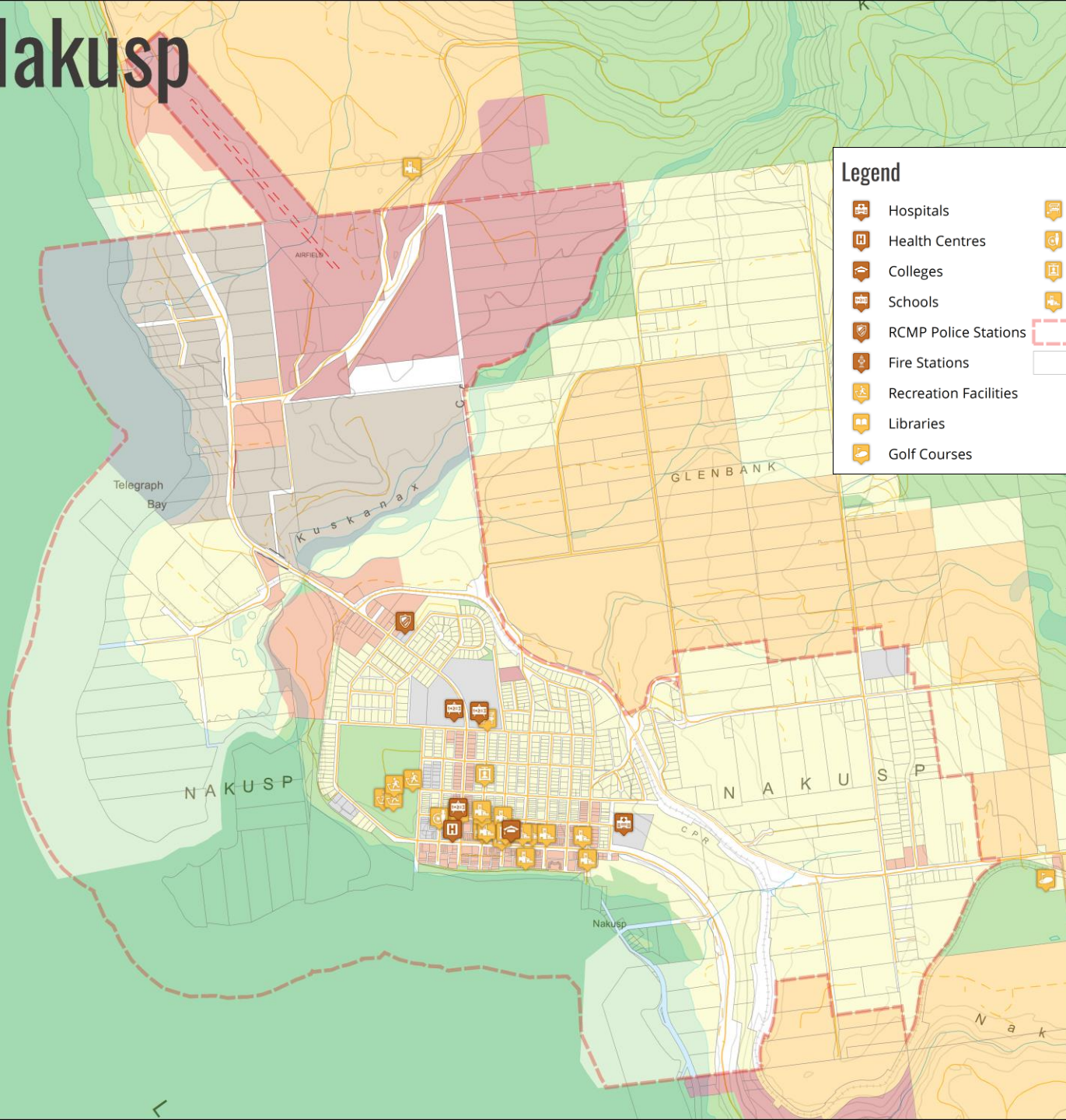
Creston



Legend

- | | | |
|-----------------------|-----------------------|------------------------------------------------------------------------------------------------------------------------|
| Hospitals | Farmers Markets | Zoning
Agricultural
Commercial
Industrial
Mixed Use
Parks and Recreation
Residential
Rural |
| Health Centres | Museums | |
| Colleges | Galleries And Centres | |
| Schools | Historic Places | |
| RCMP Police Stations | Municipal Boundaries | |
| Fire Stations | Parcels | |
| Recreation Facilities | | |
| Libraries | | |
| Golf Courses | | |
| | | |

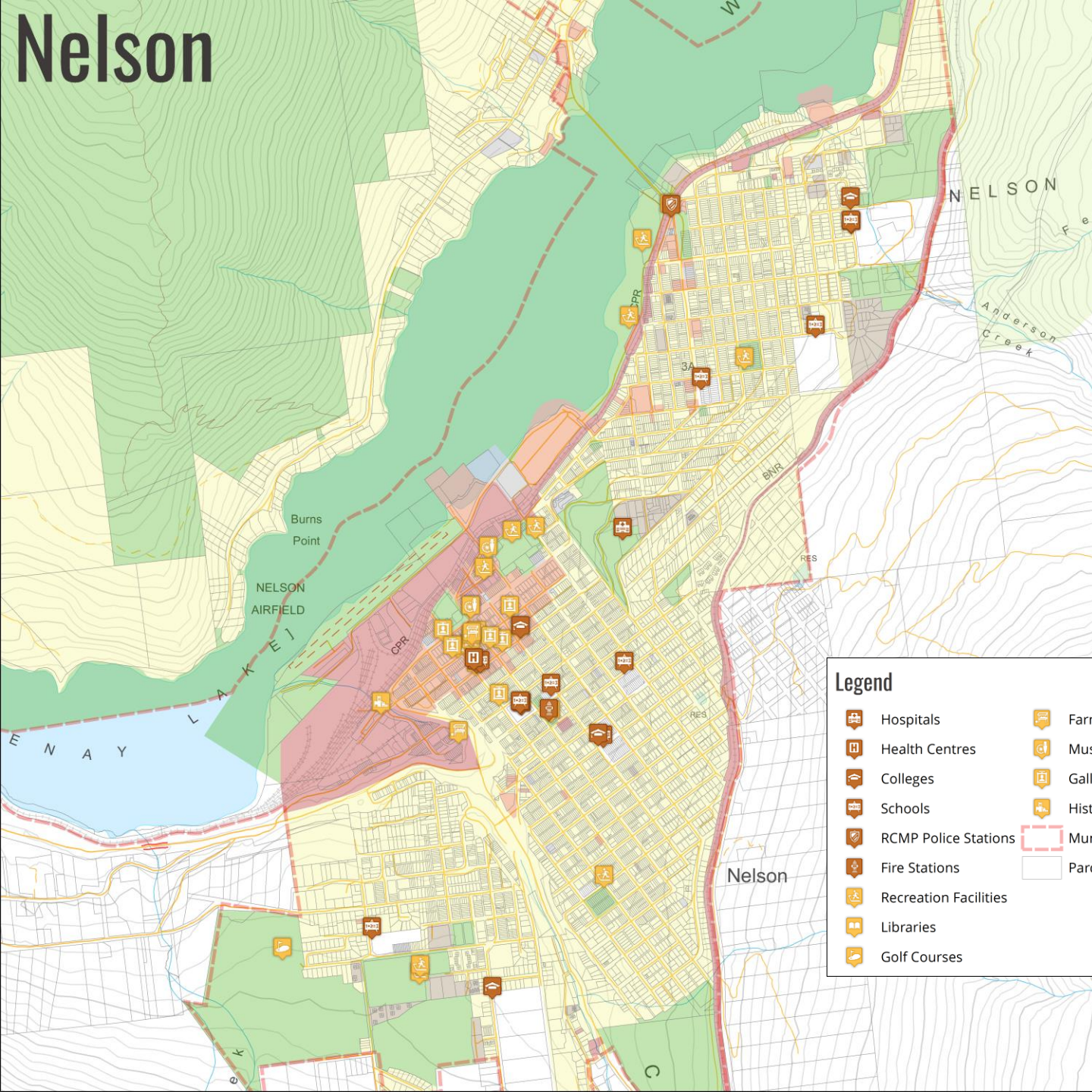
Nakusp



Legend

- | | | | |
|-----------------------|-----------------------|---------------|----------------------|
| Hospitals | Farmers Markets | Zoning | |
| Health Centres | Museums | | Agricultural |
| Colleges | Galleries And Centres | | Commercial |
| Schools | Historic Places | | Industrial |
| RCMP Police Stations | Municipal Boundaries | | Mixed Use |
| Fire Stations | Parcels | | Parks and Recreation |
| Recreation Facilities | | | Residential |
| Libraries | | | Rural |
| Golf Courses | | | |
| | | | |

Nelson



Legend

Hospitals	Farmers Markets	Zoning	
Health Centres	Museums		Agricultural
Colleges	Galleries And Centres		Commercial
Schools	Historic Places		Industrial
RCMP Police Stations	Municipal Boundaries		Mixed Use
Fire Stations	Parcels		Parks and Recreation
Recreation Facilities			Residential
Libraries			Rural
Golf Courses			



Assessment of Employment Lands

Who is short of Employment Lands (Demand)?

- Use BRE results to identify gaps
- Display is at community level to protect respondents
- Question posed:
 - Is there room for expansion at your current site?



Assessment of Employment Lands

Are there existing lands that are not being used?

- **BC Assessment Roll-Data**
- **Tied to cadastral Fabric**
- **Proxy:**
 - **Parcels listed as vacant (use codes)**
 - **Assumed to indicate underutilization**



Assessment of Employment Lands

Can we decrease the probability of opposition to development on appropriately zoned lands?

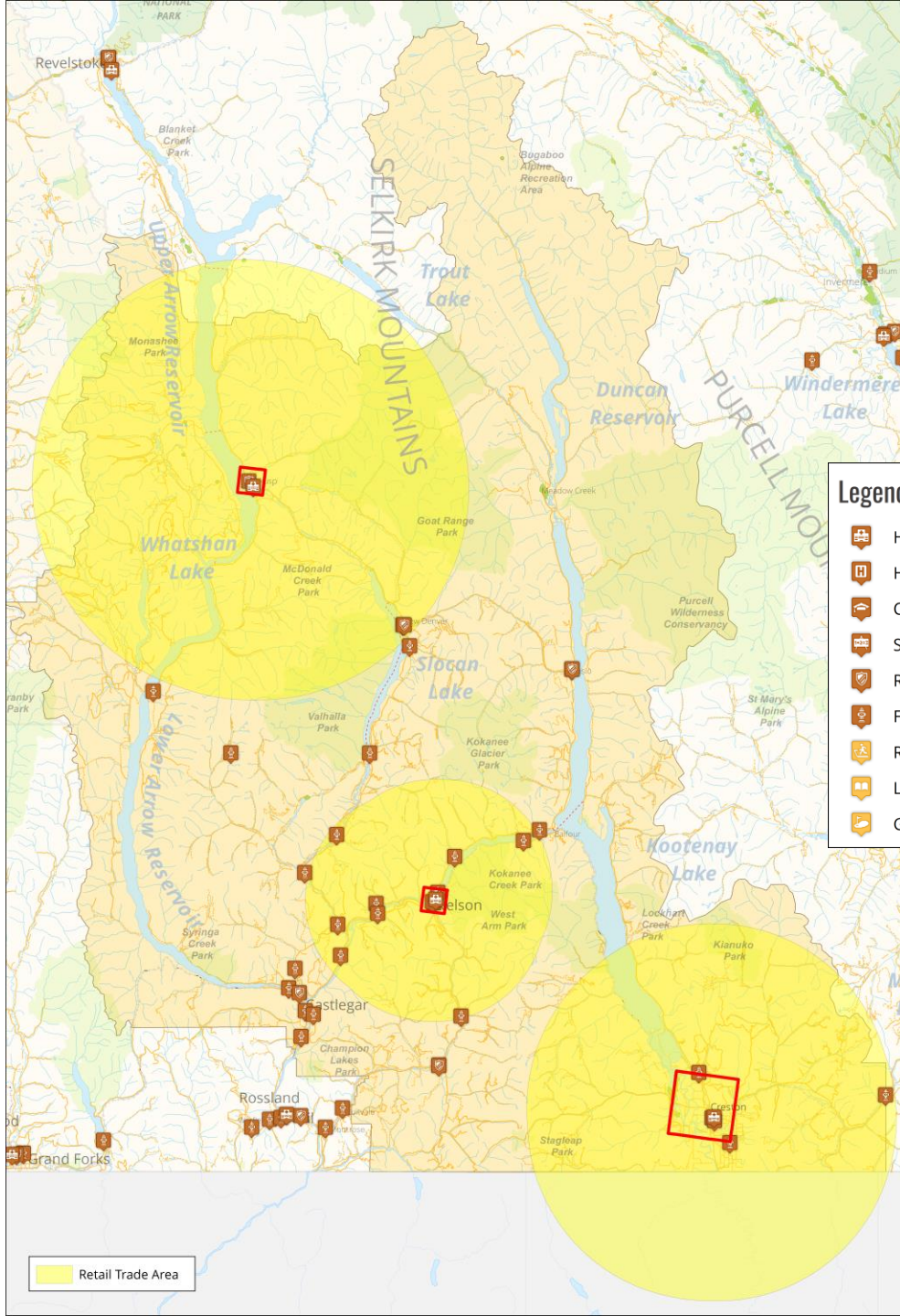
- **Anecdotal evidence suggests this problem occurs even when all appropriate steps are taken**
- **Assumption: certain zoning borders are more likely to produce conflict**

Areas of Potentially Controversial Developments

- Commercial zoned areas
- Industrial zoned areas
- Mining tenures
- Forestry tenures

Potential Conflicting Uses

- Residential zoned areas
- Parks, WMA, Rec Tenures
- Community Watershed areas
- ALR



Legend

	Hospitals		Farmers Markets	Zoning		
	Health Centres		Museums			Agricultural
	Colleges		Galleries And Centres			Commercial
	Schools		Historic Places			Industrial
	RCMP Police Stations		Municipal Boundaries			Mixed Use
	Fire Stations		Parcels			Parks and Recreation
	Recreation Facilities					Residential
	Libraries					Rural
	Golf Courses					

Retail Trade Area

Creston

Creston RTA	Count	Area (ha)
Industrial Parcels	138	717.824
Underutilized Industrial	31	161.73
Commercial Parcels	348	93.9608
Underutilized Commercial	35	7.93
Pressure Impacted Parcels	1536	152892
Total Parcels in RTA	7673	201478

Legend

Zoning

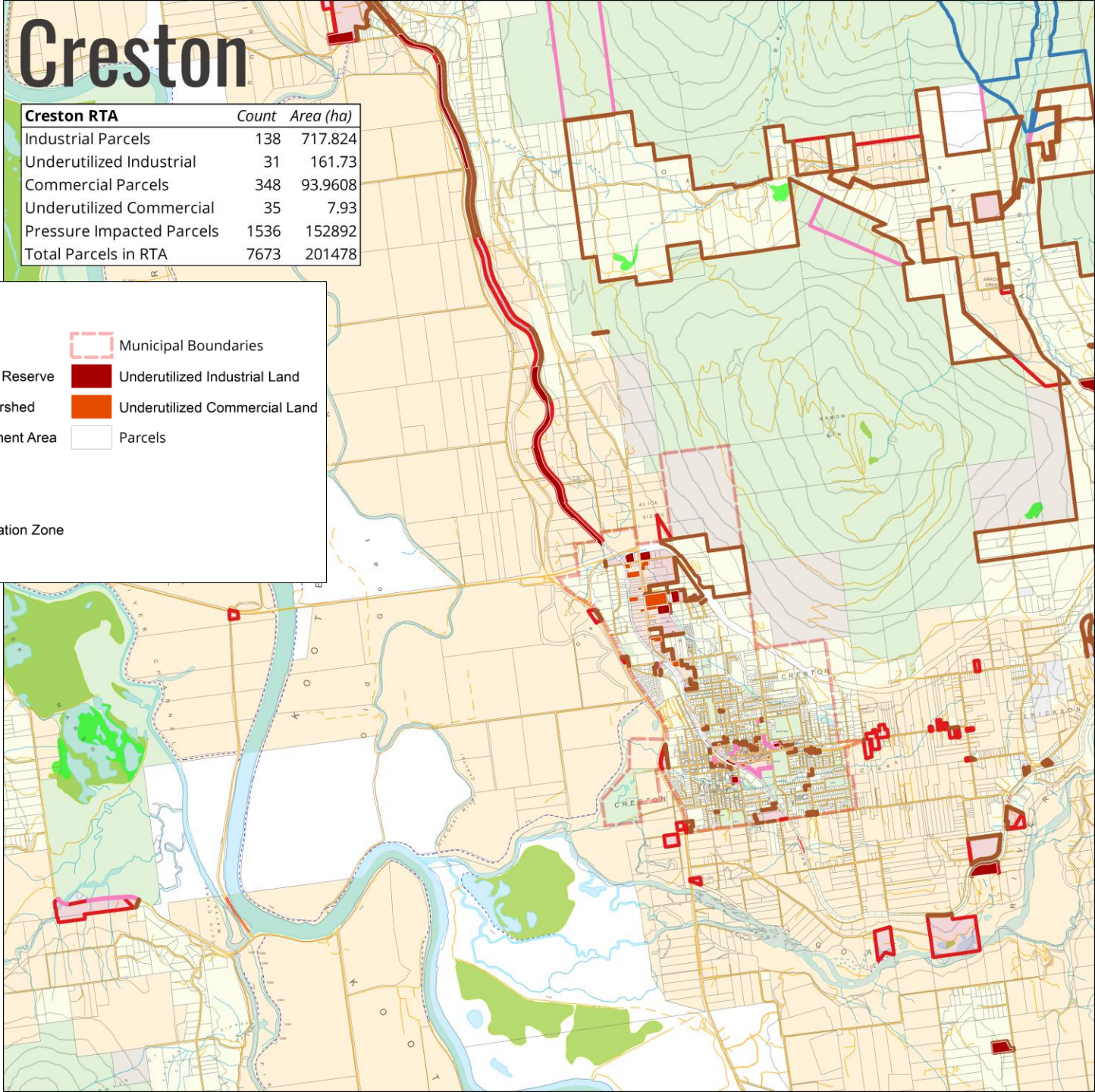
- Agricultural
- Commercial
- Industrial
- Mixed Use
- Parks and Recreation
- Residential
- Rural

Pressure Areas

- Agricultural Land Reserve
- Community Watershed
- Wildlife Management Area
- National Parks
- Provincial Park
- Parks and Recreation Zone
- Residential Zone

Other Legend Items:

- Municipal Boundaries
- Underutilized Industrial Land
- Underutilized Commercial Land
- Parcels



Nakusp

Nakusp RTA	Count	Area (ha)
Industrial Parcels	293	459.386
Underutilized Industrial	77	346.173
Commercial Parcels	502	66.1462
Underutilized Commercial	36	5.18
Pressure Impacted Parcels	2248	77100.9
Total Parcels in RTA	6668	37238.6

Legend

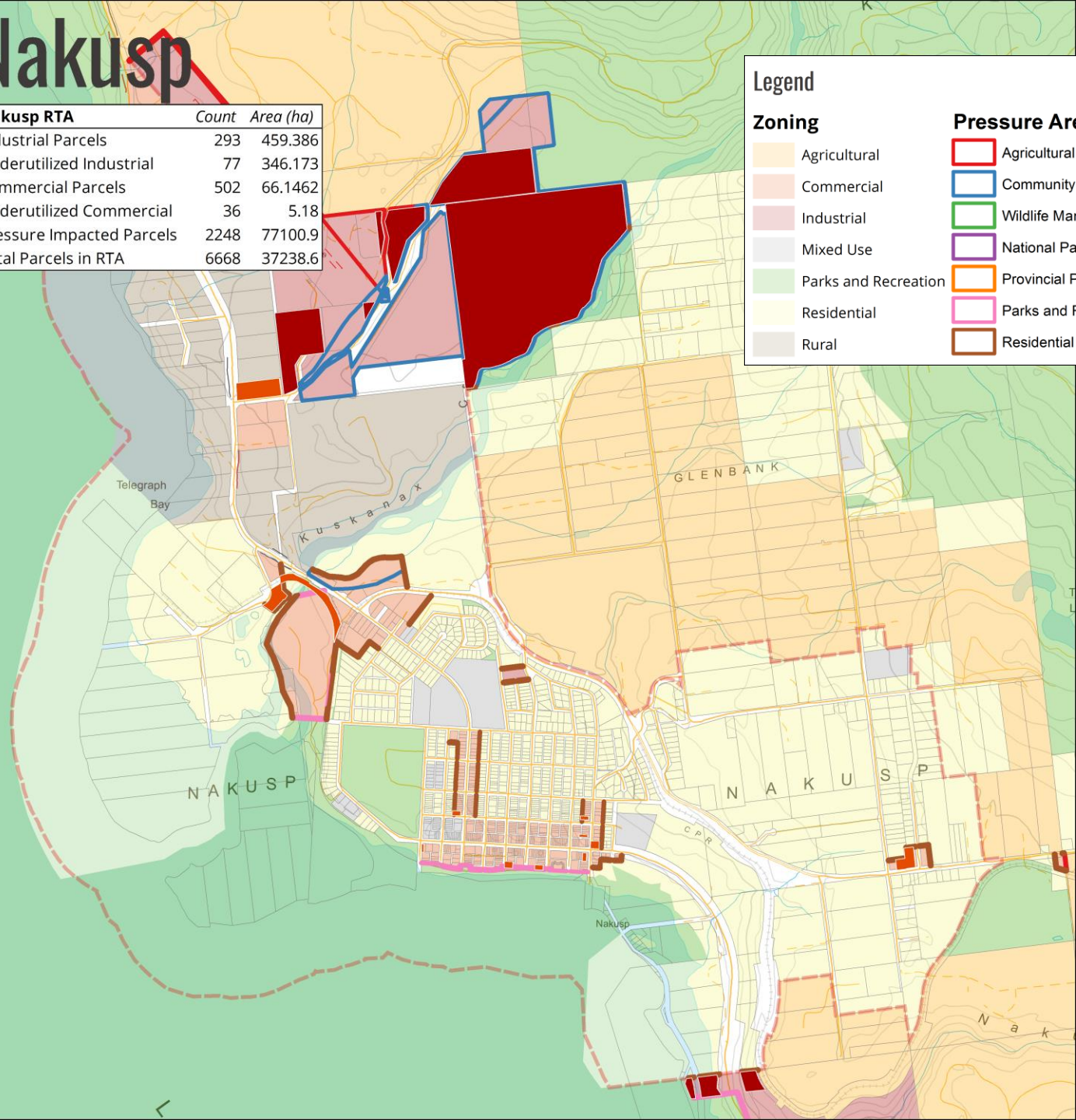
Zoning

- Agricultural
- Commercial
- Industrial
- Mixed Use
- Parks and Recreation
- Residential
- Rural

Pressure Areas

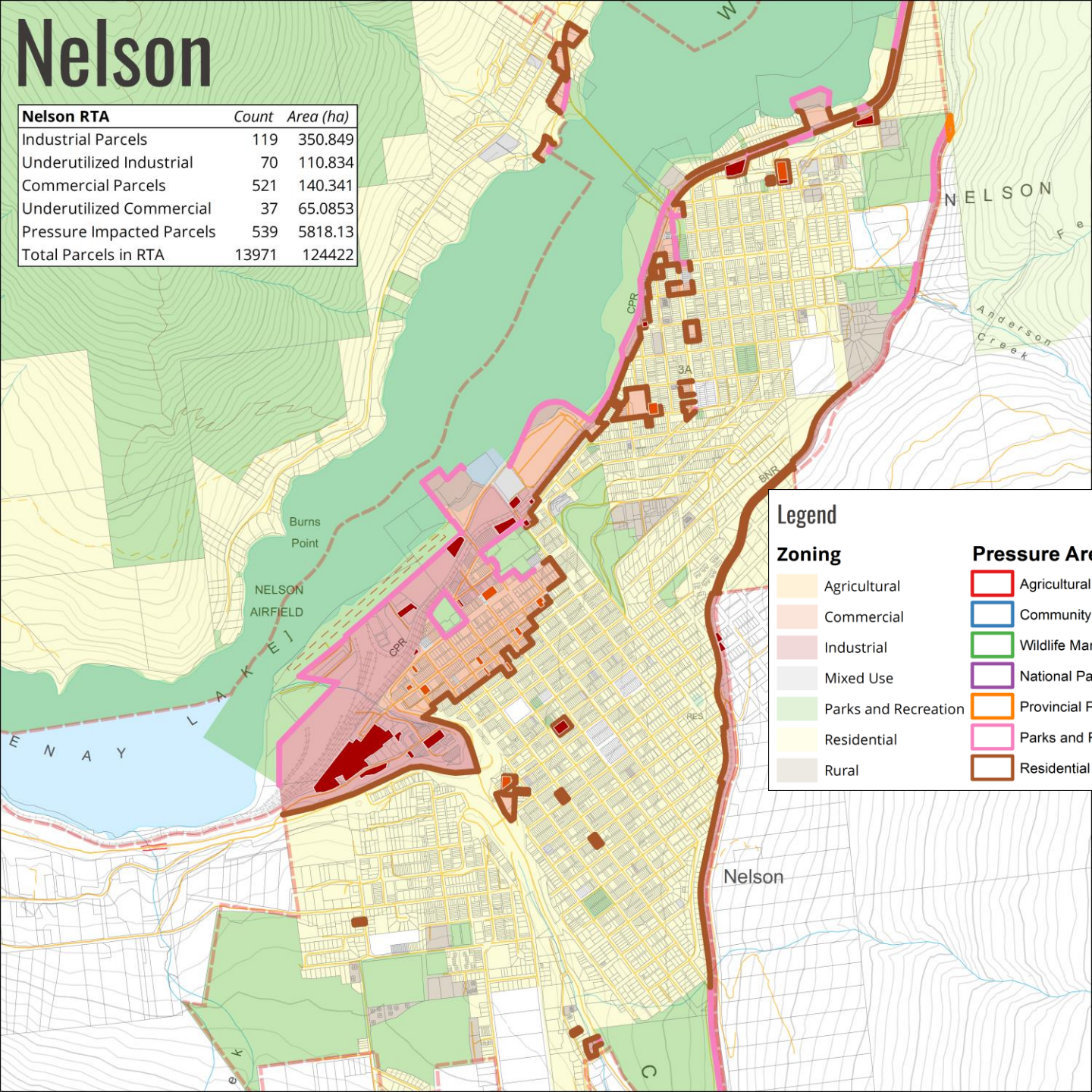
- Agricultural Land Reserve
- Community Watershed
- Wildlife Management Area
- National Parks
- Provincial Park
- Parks and Recreation Zone
- Residential Zone

- Municipal Boundaries
- Underutilized Industrial Land
- Underutilized Commercial Land
- Parcels



Nelson

Nelson RTA	Count	Area (ha)
Industrial Parcels	119	350.849
Underutilized Industrial	70	110.834
Commercial Parcels	521	140.341
Underutilized Commercial	37	65.0853
Pressure Impacted Parcels	539	5818.13
Total Parcels in RTA	13971	124422



Legend

Zoning	Pressure Areas	Other
Agricultural	Agricultural Land Reserve	Municipal Boundaries
Commercial	Community Watershed	Underutilized Industrial Land
Industrial	Wildlife Management Area	Underutilized Commercial Land
Mixed Use	National Parks	Parcels
Parks and Recreation	Provincial Park	
Residential	Parks and Recreation Zone	
Rural	Residential Zone	



Site Locator Tool

Early project Question

Are there public lands that could be added to the supply of Employment Lands?

- **Addressing question led to development of extraordinary tool**
- **Re-define question: “Can we identify suitable lands?”**
- **Apply question to current supply of Employment lands**



Site Locator Tool – Search Criteria

Location

- Regional District (required)
- Community(Optional)
- Distance from community (Optional)

Zoning

- Choose one of 7 major zoning types

Developed

- Choose whether parcel has existing building

Transportation

- Select maximum distance to major Hwy

Services (proxy)

- Distance to Hwys, roads, municipal bdry

Water

- Distance to water service area, municipal bdry, or community watershed

Parcel Size

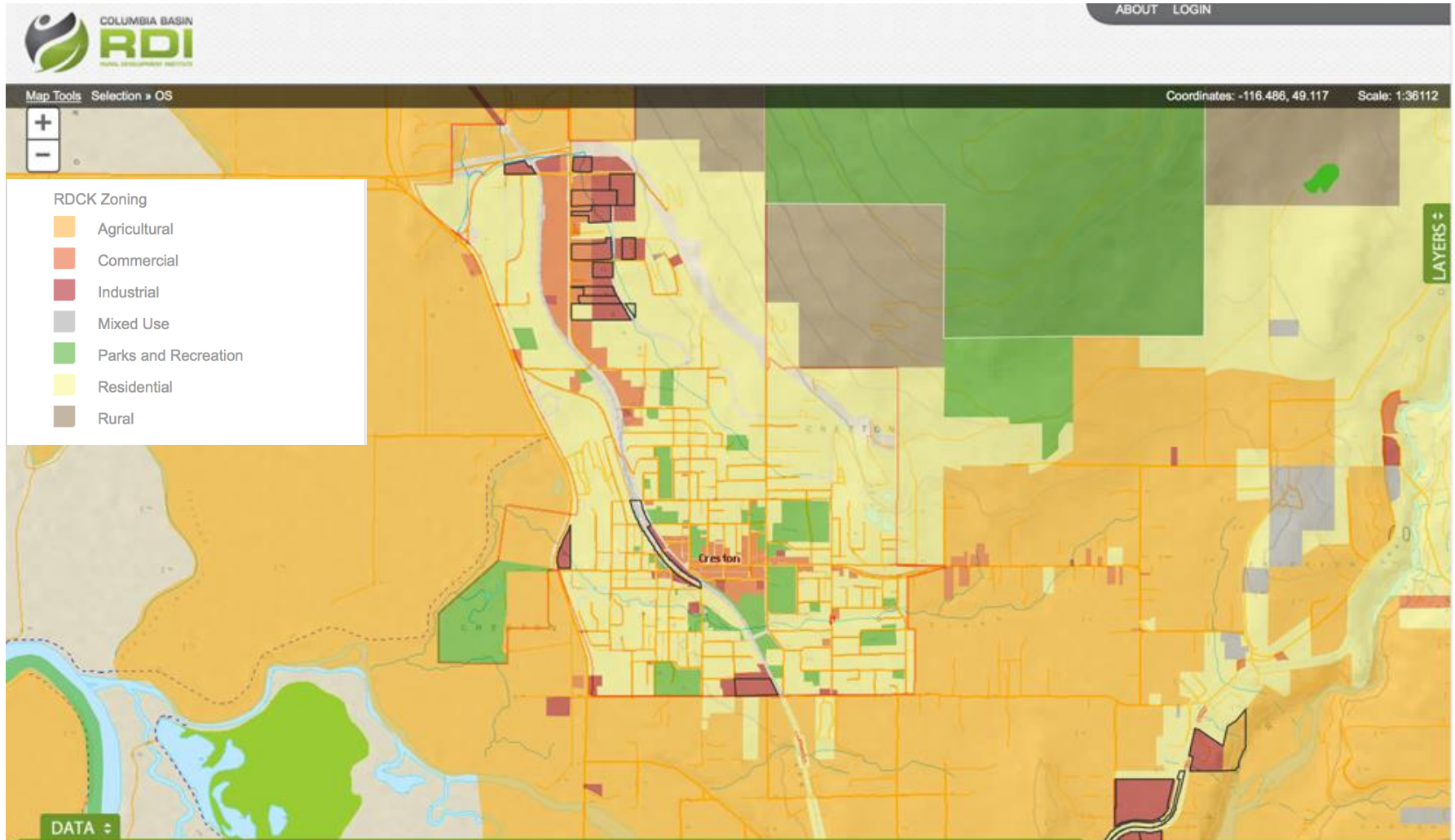
- Minimum / maximum measured in ha

Land Gradient

- Minimum % of area under specific gradient



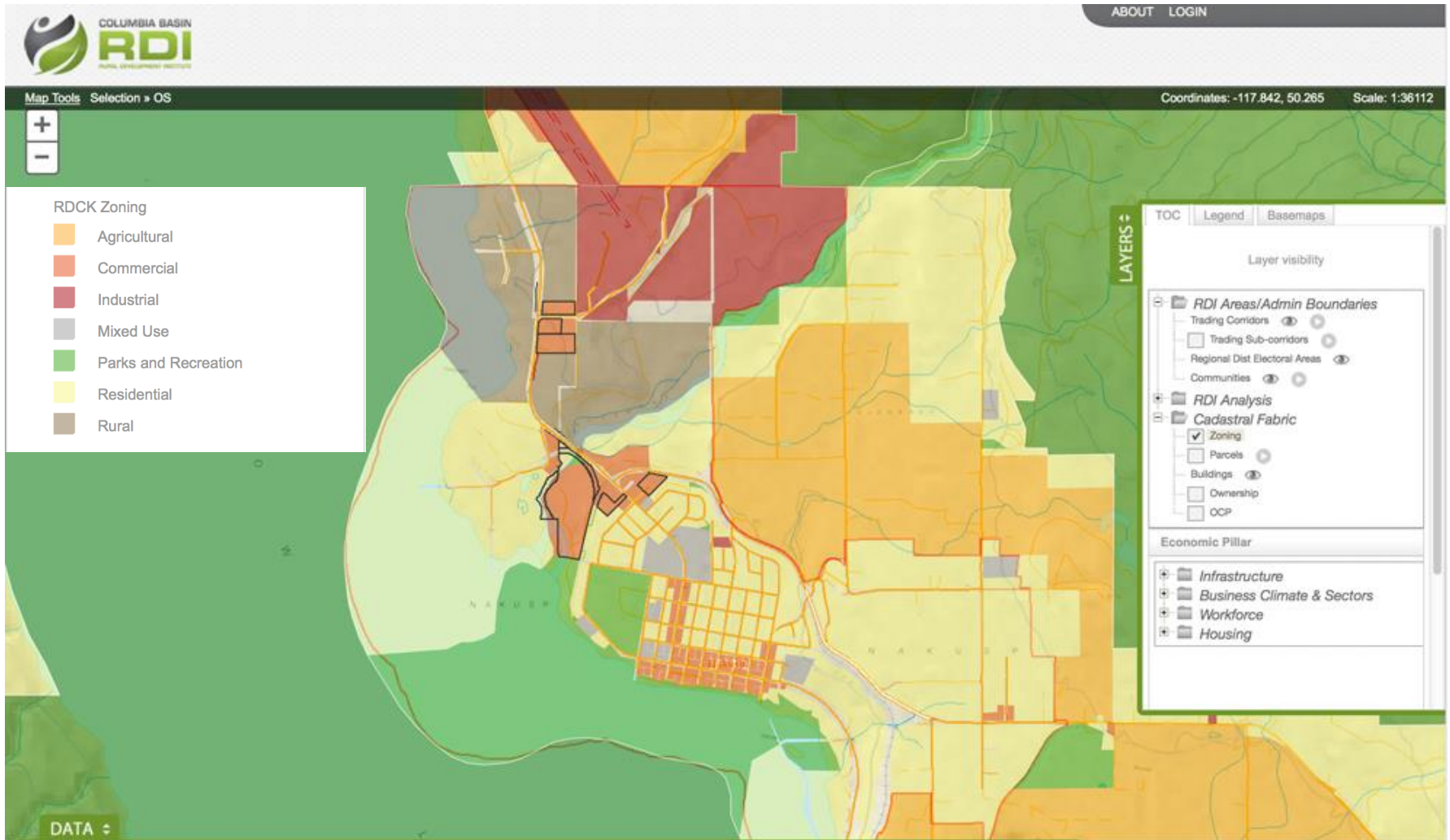
Creston (Zoning)



Parcels outlined in black meet the filtering criteria 



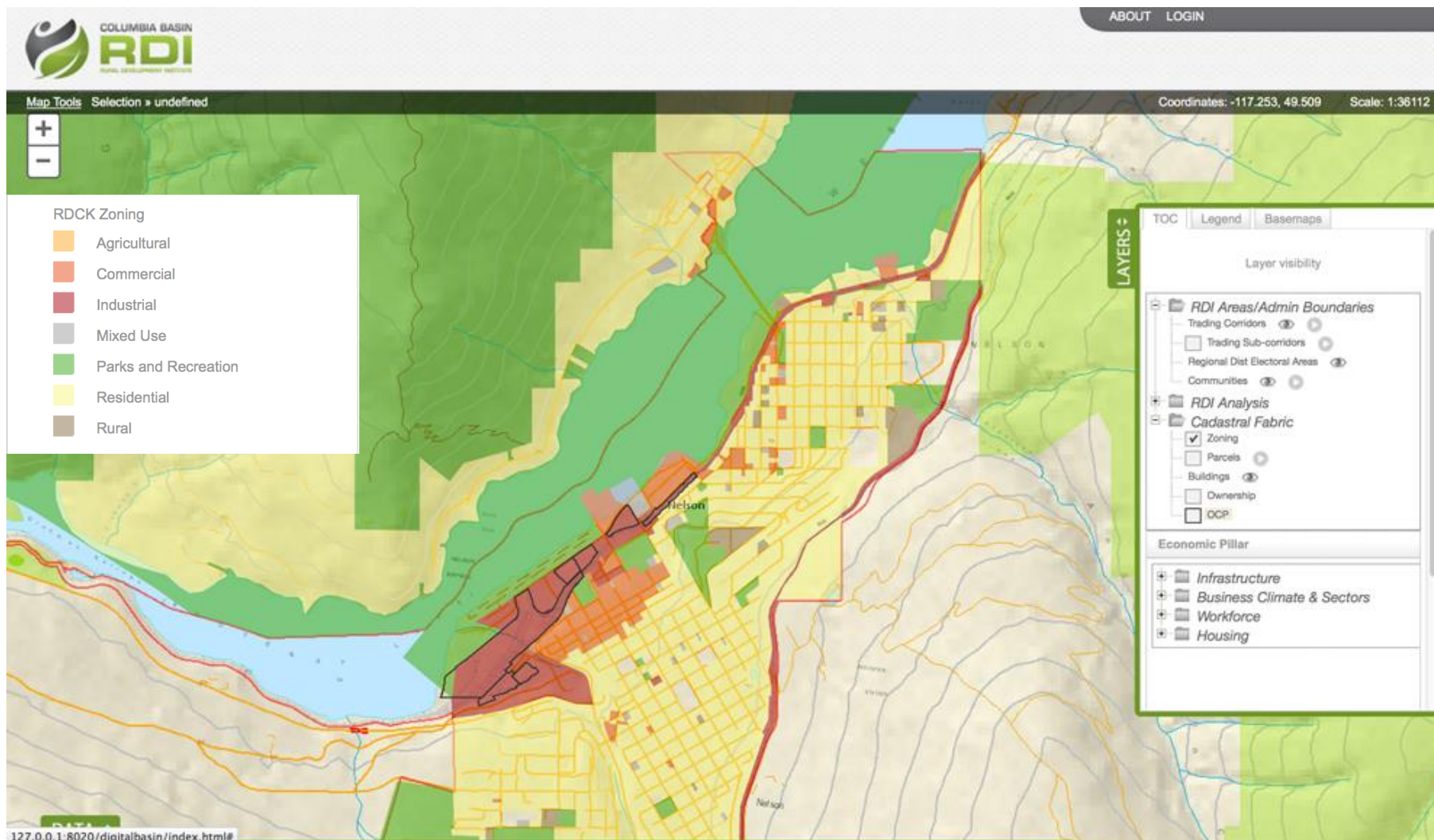
Nakusp (Zoning)



Parcels outlined in black meet the filtering criteria —



Nelson (Zoning)



Parcels outlined in black meet the filtering criteria —



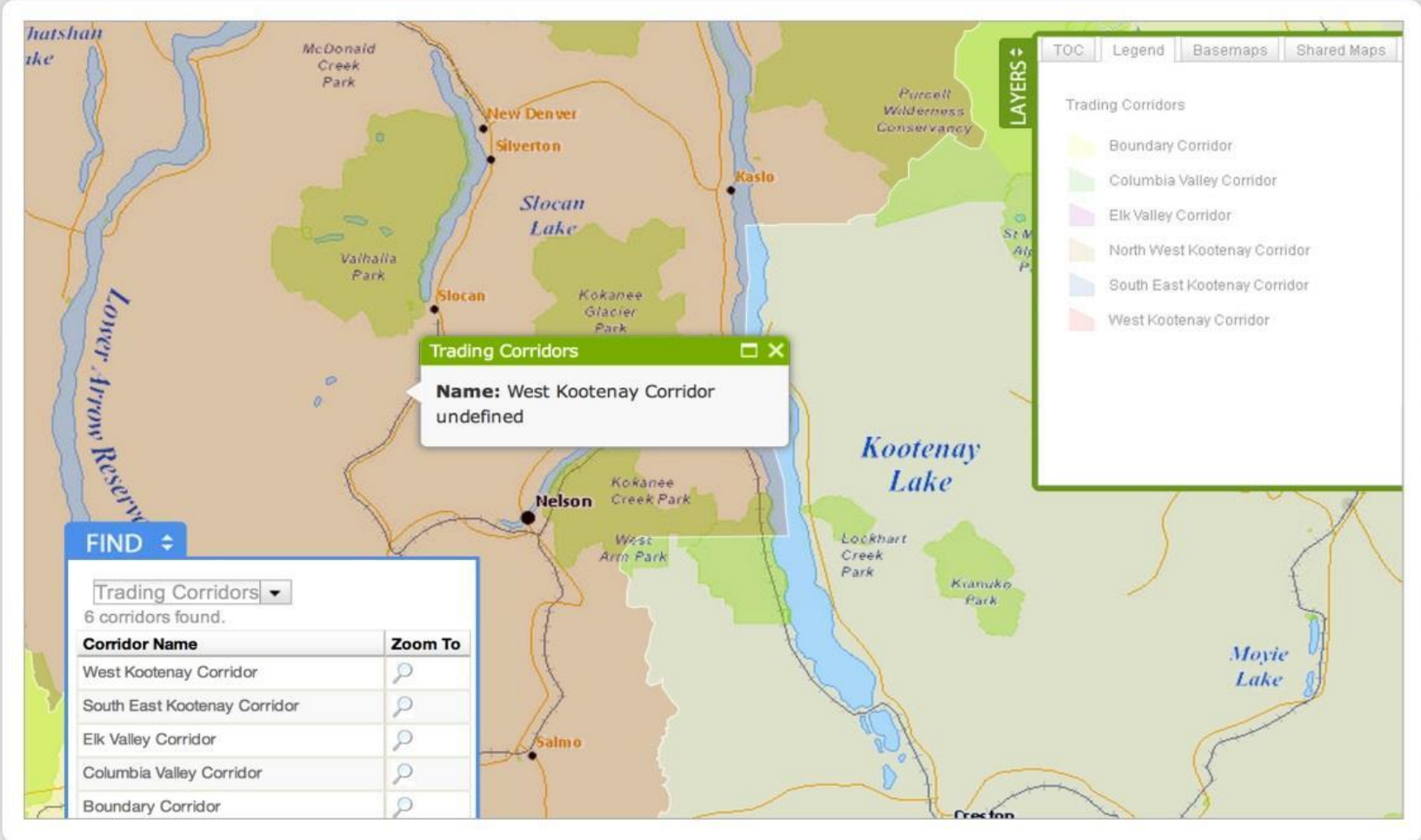
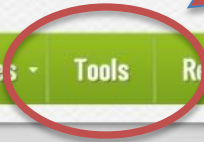
Site Locator Tool

Results accompanied by list of site IDs

Beta – Testing in May

Availability through:

www.cbrdi.ca








Map interface showing Trading Corridors. A tooltip displays: **Name: West Kootenay Corridor** undefined.

LAYERS

- Trading Corridors
 - Boundary Corridor
 - Columbia Valley Corridor
 - Elk Valley Corridor
 - North West Kootenay Corridor
 - South East Kootenay Corridor
 - West Kootenay Corridor

FIND

Trading Corridors ▾
6 corridors found.

Corridor Name	Zoom To
West Kootenay Corridor	
South East Kootenay Corridor	
Elk Valley Corridor	
Columbia Valley Corridor	
Boundary Corridor	



Corridors for Collaboration & Analysis

Trail & Area (Fruitvale, Warfield, Montrose, RDKB Areas A & B)

Rossland

Castlegar & RDCK Areas I & J

Nelson & RDCK Areas E & F

Kaslo & RDCK Area D

Salmo & RDCK Area G

Slocan Valley (Slocan, Silvertown, New Denver, RDCK Area H)

Nakusp and RDCK Area K

West Kootenay Corridor

Grand Forks

Greenwood

Midway

RDKB Area C

RDKB Area D

RDKB Area E

Boundary Corridor

Creston & RDCK Area A, B & C

Kimberley & RDEK Area E

Cranbrook & RDEK Area B & C, Indian Reserves

South East Kootenay Corridor

Fernie & RDEK Area A

Elkford

Sparwood

Elk Valley Corridor

Canal Flats

Invermere

Radium Hot Springs

RDEK Area F

RDEK Area G

Golden & RDCS Area A

Columbia Valley Corridor

Valemount

Revelstoke & RDCS Area B

COLUMBIA BASIN RURAL DEVELOPMENT INSTITUTE

CONNECT • UNDERSTAND • MOBILIZE



COLUMBIA BASIN
RDI
RURAL DEVELOPMENT INSTITUTE