

Columbia Basin Rural Development Institute

ANNUAL REPORT 2013-2014



COLUMBIA BASIN
RDI
RURAL DEVELOPMENT INSTITUTE



CONTENTS

Message from the President	4
Message From RDI's Senior Inaugural Officer	5
The Columbia Basin Rural Development Institute (RDI)	6
Strategic Plan	8
Consolidating & Building Regional Knowledge	10
Leading & Supporting Applied Research	13
Knowledge Mobilization	16
Looking Ahead	20
Regional Research Collaboration	21
Research Team	24

Message From the President



It is an honour to welcome you to the 2013-2014 annual report for the Columbia Basin Rural Development Institute (RDI). Since its inception, the RDI has concerned itself with strengthening communities in the Columbia Basin-Boundary region. With our partner Columbia Basin Trust and our many and diverse stakeholders, the RDI has set out to improve our understanding of our region, to support sound decision making and investment, and to engage a variety of stakeholders and sectors in the work of developing resilient communities.

In our new strategic plan, "Beyond Imagination", Selkirk College commits to inspiring lifelong learning, transforming lives through education, and serving our communities. One of our five pillars of success specifically describes the commitment to community engagement and innovation. And one of our five strategic directions calls us to expand our impact on community development. In all of this work, the RDI is a critical part of that exciting vision as a locus of applied research and community development learning.

It is exciting to see the RDI now launching its own strategic plan with a vision to support the development of a resilient region through collaborative learning and informed decision making. The work of the RDI to "understand, connect, and mobilize" is resulting in leading initiatives such as the State of the Basin and Digital Basin, Community Profiles, Business Retention and Expansion, and the Adopting Digital Technologies pilot project. I am looking forward to further sharing of this work and the development of new projects to achieve the vision as the strategic plan is implemented.

I am grateful to Terri MacDonald and the RDI team, the Governance and Advisory committees, and our many partners and stakeholders at Selkirk College and in the Columbia Basin-Boundary region for contributing to our continued success.

A handwritten signature in black ink that reads "Angus Graeme". The signature is fluid and cursive.

Angus Graeme, M.A.
President, Selkirk College



Message From RDI's Senior Inaugural Officer



Since our inception in 2011 we have experimented with approaches to fulfill our mandate to support informed decision making in the Columbia-Basin Boundary region. Our work over the first few years has focused on better understanding the information and research needs of the region we serve, consolidating regional data and research, and undertaking our first few multi-year regional applied research projects. RDI Governance and Advisory Committees and project partners have been instrumental in helping us to refine our vision and approach to applied research and information provision on the region, and have encouraged us to mobilize this, and future research through targeted outreach and extension activities.

We are proud of how the Columbia Basin Rural Development Institute's reputation has been established in our region and beyond, and of the results we have produced. As the only college-based, rural-placed rural development institute in the country we are pleased to serve as the 'go to' place for information and research on the region and to help foster linkages between faculty, students and communities. As our annual report indicates, we have been very busy this past year.

This annual report, as organized by our new strategic directions, demonstrates our achievements in 2013-14 and highlights where we are headed in the years to come. 2014-15 will mark the launch of the Columbia Basin Rural Development Institute's first three-year strategic plan. We look forward to our continued service to communities in our region.

Terri Macdonald

Terri MacDonald, Ph.D.
Regional Innovation Chair in Rural Economic Development, Selkirk College



THE COLUMBIA BASIN RURAL DEVELOPMENT INSTITUTE (RDI)

In 2011, Columbia Basin Trust (CBT) entered into a partnership with Selkirk College to create the RDI with the intent of an eight year partnership. The purpose of the RDI is to promote and support informed planning and decision-making in the Columbia Basin-Boundary region through region-specific information and applied research. The work of Selkirk College's Regional Innovation Chair in Rural Economic Development (RIC) is part of the institute. The RIC serves as the institute's inaugural senior officer and the institute's strategic plan includes the goals of the RIC. In addition to the RIC, Selkirk College employs an RDI Coordinator and an interdisciplinary team of Masters level researchers with expertise in diverse areas such as resource management, public policy, land use planning, economics, and education.

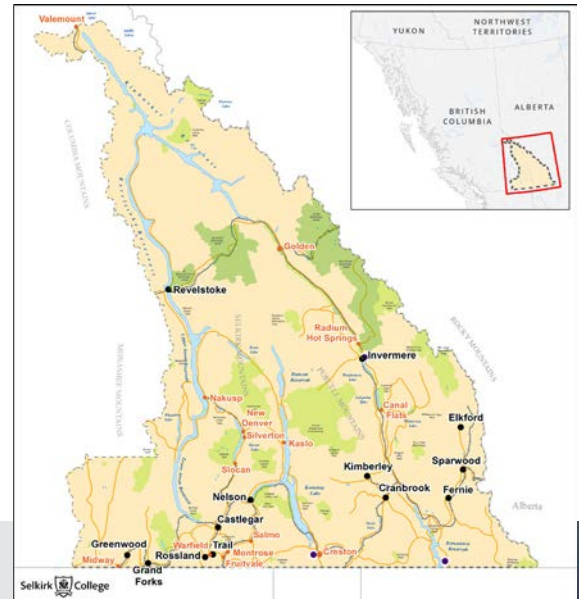
MISSION & VISION

The RDI's mission is to support informed decision-making by Columbia Basin-Boundary communities through the provision of information, applied research and related outreach and extension support.

The Columbia Basin Rural Development Institute (RDI) envisions a resilient region where Columbia Basin-Boundary communities thrive as a result of collaborative learning and informed decision-making. The RDI has a long-term vision of itself as a regional research centre that:

- Is the first place communities¹ and researchers go to access information and rural development research on the region.
- Has a proven track record of effectively conducting and supporting research, and of helping stakeholders make best use of that research.
- Has well-established and productive working relationships with others in the region whose activities are related to the RDI's mandate and with provincial and national rural development networks.
- Has consistent and widespread community support for the RDI's activities based on proven usefulness in meeting rural development needs.
- Is financially sustainable over the long-term.

¹The RDI defines 'communities' as "local governments, organizations and First Nations that have an interest in furthering rural development" and rural development as "the process of improving the quality of life and economic, environmental, social and cultural well-being of people living in relatively isolated and sparsely populated areas".



GOVERNANCE & ADVISORS

The RDI is governed by a Governance Committee that consists of two CBT representatives (President / CAO, Director Special Initiatives) and three Selkirk College representatives (President / CAO, VP Education and Students, Dean of Applied Research). The Governance Committee approves the strategic plan, annual operation plan and budget, reviews performance annually against the annual operating plan, budget, and strategic plan, and provides strategic advice on the applied research needs, gaps and / or focus areas.

A regional RDI Advisory Committee is also in place to provide advice and direction to RDI around the strategic plan, applied research projects and knowledge mobilization activities. Project advisory groups also support the work of the RDI, providing advice on specific applied research projects.

MONITORING & EVALUATION

An independent evaluation of the RDI was completed in 2013. A sample of 21 stakeholders were interviewed and asked a series of open-ended questions. Identified areas of strength included quality and credibility of RDI products and initiatives, collaboration, relevance of research and analysis, leveraging of resources, and support for Business Retention & Expansion (BRE) and Manufacturing & Technology Sector Development (MATS) projects. Areas requiring improvement included communication and dissemination of RDI products and initiatives, attention to vision, growth and management of expectations, and improved engagement of the advisory committee. Feedback was incorporated into the 3-year strategic plan.

FUNDING

CBT funding provides annual funding based on the annual RDI work plan. Selkirk College provides \$125,000 annually, office space for the institute, and administration. CBT is currently the primary funder of the RDI although other sources were secured this year to expand the scope of research undertaken by the institute, including \$306,000 from the National Research Council and \$50,000 from the BC Real Estate Foundation.

STRATEGIC PLAN

The RDI developed a three-year strategic plan (2014-2017) that outlines the mission, vision and strategic priorities of the RDI. The strategic plan will guide the RDI's activities for the next three years and is informed by various consultation processes that have been completed in the region, including over 140 RDI one-on-one consultations with economic, social, cultural and environmental stakeholders, feedback from RDI Governance and Advisory Committees, and feedback generated from Selkirk College and CBT sector strategic planning consultations.

1

STRATEGIC PRIORITY 1:

CONSOLIDATE, IDENTIFY GAPS & BUILD REGIONAL KNOWLEDGE

Undertake research that provides information on economic, social, cultural and environmental conditions and trends in the Columbia Basin-Boundary region:

- Compile and manage priority datasets.
- Develop and monitor relevant indicators.
- Interpret data and highlight important trends and conditions.
- Compile an inventory of regional research and rural development plans.

Identify and address priority data gaps:

- Encourage the standardization of data collection methods across communities.
- Access data from a variety of sources to address priority data and indicator gaps.

2

STRATEGIC PRIORITY 2:

UNDERTAKE APPLIED RURAL DEVELOPMENT FOCUSED RESEARCH

Lead, broker, and support applied research partnerships related to identified research priorities:

- Identify research that will benefit the region.
- Lead and support high priority regional applied research projects.
- Broker and support college-community applied research projects.
- Provide advisory services to support community-based applied research projects.

Assist in the diversification of the regional economy through the promotion of innovation and technology transfer in existing and new enterprises:

- Broker and support college-company applied research and development projects.
- Promote best practices, innovation and collaboration in economic development.

STRATEGIC PRIORITY 3:

SUPPORT THE ACCESS, USE & APPLICATION OF RDI RESEARCH & TOOLS

Raise awareness and provide opportunities for communities to access and use RDI research and tools:

- Engage in communication and outreach activities to encourage the use of appropriate RDI research and tools by communities.
- Support the use of RDI research and tools through the provision of training and extension services.
- Connect communities to support organizations and other communities with similar rural development and /or research goals.

Contribute to the awareness of rural development issues, challenges, and opportunities:

- Participate in provincial and national rural development networks.
- Promote rural development best practices and share lessons learned from similar rural regions to Basin-Boundary communities.

STRATEGIC PRIORITY 4:

SUPPORT MEANINGFUL APPLIED RESEARCH COLLABORATION AMONGST EDUCATIONAL INSTITUTIONS & COLUMBIA BASIN TRUST

Improve information sharing and collaboration between CBT and RDI:

- Ensure mechanisms are in place to support ongoing collaboration, information sharing, and shared decision making related to applied research projects.
- Include data generated by applicable CBT research and funded projects into RDI knowledge products.
- Support cross-referrals between CBT and RDI.

Improve information sharing and collaboration across post-secondary institutions:

- Ensure mechanisms are in place to support ongoing information sharing and collaboration across the colleges related to the RDI and applied research.
- Provide opportunities for students to engage in applied research.
- Encourage regional applied research partnerships with post-secondary institutions from within and outside of the region.

Support applied research capacity improvements at the region's colleges:

- Assist in the development of college policies and procedures that support applied research and development activities.
- Promote the integration of applied research within administrative functions.
- Connect companies and communities with available college applied research supports.

3

4

CONSOLIDATING & BUILDING REGIONAL KNOWLEDGE

The RDI supports the building of regional knowledge through the State of the Basin (SOTB) Initiative and Digital Basin online geospatial portal. The RDI compiles and analyzes existing national, provincial and local data sources and uses this data to report on well-being in the Columbia Basin-Boundary region. The RDI also works to identify gaps in existing data sources and attempts to work with local stakeholders to fill those gaps. The RDI releases a series of related knowledge products including SOTB Snapshot and Long Reports, Trends Analysis Briefs, and Community Profiles. The RDI has also created the Resources Database, an online, searchable repository of research on the region.

STATE OF THE BASIN, DIGITAL BASIN & RELATED KNOWLEDGE PRODUCTS

The State of the Basin (SOTB) is an initiative to monitor and report on information relating to well-being within the Columbia Basin-Boundary region and is based on a series of indicators relating to four key interrelated pillars: economic, social, cultural, and environmental. Refining baseline indicators and the expansion of indicators in each pillar was undertaken with input from the advisory committee and consultations with over 140 experts and advisors. Snapshot Reports are released annually and Long Reports are produced every 5 years following the release of the Census. Snapshot and Long Reports were released in October. A series of 12 Trends Analysis Briefs were also released this year, exploring trends ranging from housing affordability, recreational and culture spending, glacial melt, income levels, wildfire and migration patterns. Community Profiles were also produced for each of the 28 municipalities in the region, presenting data related to demographics, income, housing, labour force, education, quality of life, taxation, utilities and business climate. Community Profiles are updated annually as new data becomes available.

The Selkirk Geospatial Research Centre and RDI teams jointly developed the Digital Basin this year. The Digital Basin serves as the online repository of data sources relevant to the region. Data can be explored geospatially and through related tables, charts and reports. Data can also be filtered by community and topic. The Digital Basin will be released in May 2014, housing over 100 indicator and asset data layers, including cadastral parcel data obtained from local governments. A series of 6 Digital Basin community workshops will be hosted in early May 2014 to help users understand how to use this exciting new tool. It is anticipated the Digital Basin will build the capacity of organizations to now easily access the data they require to support their community-based research projects and funding proposals.

2013 State of the Basin SNAPSHOT REPORT

We know life here is good. But how good is it?
Let's find out more about our region...

STATE OF THE BASIN AT A GLANCE

PILLAR	THEME	HIGHLIGHT
	Business Climate & Sector	Our region experienced job growth for the second year in a row
	Workforce	Seniors are expected to comprise 25% of the region's population over the next 10 years
	Infrastructure	80% of residents believe the water from their tap is safe to drink
	Housing	79% of dwellings are occupied by those who reside here at least 6 months a year
	Demographics	The population of 19-24 year olds has declined by 23% in the last 2 years
	Education & Learning	Most School Districts have experienced decreased enrollment over the last four years
	Wellness	Over 4,000 residents visited a food bank in March 2012
	Arts	Half of our residents volunteer
	Culture	1 in 3 residents say that the culture in our region is a significant reason why they live here
	Heritage	1 in 4 residents have volunteered for a cultural initiative over the past year
	Water	There are 62 historic places and 27 museums in our region
	Recreation	92% of residents feel that spending time outside is important to their quality of life
	Water	Consumptive water use has dropped 13.5% since 2009
	Air & Climate	Precipitation patterns are becoming more extreme
	Land & Food	The area being farmed decreased by 18.6% over the last decade
	Biodiversity	There are 114 invasive plant species in our region

The State of the Basin is a Rural Development Institute (RDI) initiative that monitors and reports on information relating to the well-being of the Columbia Basin Boundary region. The 2013 State of the Basin Snapshot Report provides an abridged version of State of the Basin research findings. For more information visit www.cbardi.ca.



STATE OF THE ENVIRONMENT PROJECT

The BC Real Estate Foundation provided \$50,000 in funding to expand the scope of the State of the Basin's environmental indicator research and development efforts. This project began in January 2013 and will conclude mid-May 2014. The focus was on better understanding the landscape of environmental stakeholders, existing research and plans, and conditions and trends in the region. An advisory group comprised of over 20 regional environmental stakeholders guided the project. One of the key deliverables is the release of 15 new environmental indicators on the Digital Basin portal.



ENVIRONMENTAL INDICATORS LITERATURE REVIEW

DEVELOPING THE COLUMBIA BASIN RURAL DEVELOPMENT INSTITUTE'S ENVIRONMENTAL RESEARCH PILLAR

Part of a series of research papers on indicator development for the State of the Basin project in the Columbia Basin Boundary Region

MAY 2013



The Columbia Basin Rural Development Institute, at Selkirk College, is a regional centre of excellence in applied research and information provision focused on strengthening rural communities in the Columbia Basin Boundary Region. Visit www.cbardi.ca for more information.

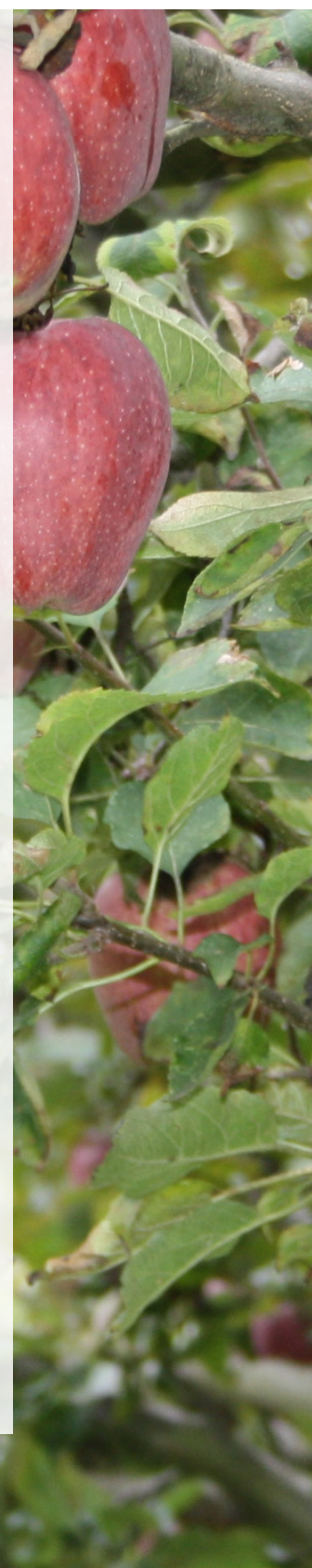
CONSOLIDATING & BUILDING REGIONAL KNOWLEDGE cont'd...

STATE OF THE BASIN CLIMATE CHANGE INDICATORS: A CASE STUDY

The RDI is providing research support to Columbia Basin Trust's Communities Adapting to Climate Change Initiative (CACCI) in its review of State of the Basin (SOTB) indicators. The project began in October 2013 and will conclude in December 2014. The purpose of the project is to assess the ability of indicators to measure the effectiveness of climate adaptation, with a primary focus on the sectors of energy, health, infrastructure, flood management, and transportation. Results of this assessment will enable improvement of the SOTB indicators to better document and measure community climate adaptation efforts.

RESOURCES DATABASE

The RDI Resources Database now houses over 140 research and planning documents specific to our region on a web-based platform. This database allows users to search for documents by community, corridor and / or theme (economic, social, cultural, environmental). Additional search functionality has been added to allow users to search by topic area. The consolidation of knowledge is one of the ways the RDI aims to support information sharing and encourage regional collaboration. The RDI Resources Database allows communities (geographic and communities of interest) to learn from each other and points to opportunities where communities might come together around shared research interests.



LEADING & SUPPORTING APPLIED RESEARCH

The RDI takes on various applied regional research priorities each year based on a set of criteria and in consultation with the advisory group, Selkirk College, CBT and economic, social, cultural and environmental stakeholders in the region. Some applied research priorities require substantial effort and may span several years depending on the project goals and objectives. The audience for applied research projects varies depending on the nature of the applied research focus and is often cross-sectoral in nature. It includes both geographic communities (local government, CBT Community Directed Funds Committees) and communities of interest (i.e. economic, social, cultural and environmental partnerships / associations). The RDI supports informed planning and decision making in the region by leading regional and supporting community-driven applied research projects.

EMPLOYMENT LANDS

The Employment Lands project was undertaken in partnership with Community Futures East Kootenay and the Province of BC. The project focused on the development of an online inventory of available industrial, commercial, agricultural and crown lands, a site selection tool, and an analysis of available 'wealth generating' lands. Local government, investors, planners, economic development practitioners and existing companies can access the inventory and site selection tool online and are able to explore parcels alongside over 100 Digital Basin economic, social, cultural and environmental indicator and asset data layers. The analysis of lands utilized a multi-level, integrated economic development-geospatial analysis of land supply, usage, constraints, and demand. A series of 6 forums across the region will be held in early May 2014 with representatives from local government and the economic development community to discuss regional and corridor-level findings and discuss possible next steps.

ADOPTING DIGITAL TECHNOLOGIES PILOT PROJECT (ADT)

The National Research Council-funded Adopting Digital Technologies Pilot project took place between January 2013 and February 2014. The project focused on the provision of technology training, advisory services, and direct support to companies and drew heavily on the technological expertise of faculty and students from the Geographic Information Systems programs, the Selkirk Geospatial Research Centre and the Digital Arts and New Media program at Selkirk College. The RDI provided ongoing project management support. The ADT project team included a College-Industry Liaison Officer, a Project Coordinator, a Project Outreach Assistant, 4 Co-Op students, and 11 faculty members. A total of 2901 hours of training, advisory services and direct support was provided to 222 SMEs and 16 non-profits, including a total of 171 hours of outreach, 1301 hours of training, and 1429 hours of advisory and direct support. Selkirk College partnered with the College of the Rockies and Okanagan College in the delivery of this project and will continue to explore partnership opportunities for the continuation of related training and applied research activities moving forward. This project will be featured as a national success story on the National Research Council's website.



LEADING & SUPPORTING APPLIED RESEARCH cont'd...

BUSINESS RETENTION & EXPANSION (BRE)

The number of communities participating in the Columbia Basin-Boundary BRE pilot project continued to grow this year. A series of BRE reports were produced, including the release of Boundary, Lower Columbia and the Regional Manufacturing and Technology BRE reports in April, the release of the Nakusp BRE report in October, the release of the Golden BRE report in December, and the release of the Slocan Valley BRE report in March. RDI researchers presented the findings of BRE projects at community meetings following the release of BRE reports. The RDI provided BRE training to 12 stakeholders in partnership with the College of the Rockies in June to support East Kootenay BRE implementation efforts and one-on-one BRE training with 3 Slocan Valley partners in the fall of 2013. Kimberley and Sparwood are currently in the data collection phases of their BRE projects. A total of 552 businesses have been surveyed to date, creating a rich database of information that is informing local and corridor level economic development planning. It is anticipated findings from the BRE database will now begin to inform economic development planning at the regional level.

SLOCAN VALLEY
Economic Development Resources



EMERGING RESEARCH PRIORITIES

A number of possible areas for future interdisciplinary regional applied research were identified through the fall RDI Evaluation, consultations with the RDI advisory and governance groups, over 140 one-on-one consultations with regional stakeholders, and Selkirk College and Columbia Basin Trust consultation processes. Research proposals are being developed around the themes of regional food systems, collaboration in the non-profit sector, and watershed governance. A decision-making matrix is now in place to assist in the selection of future regional applied research projects as RDI capacity allows. A number of other research themes (i.e. place-based development, workforce development, impacts of climate change, business-government relations, poverty reduction, seniors housing needs, sector-specific supply sourcing) are also being explored, some of which may begin to be addressed through Knowledge Briefs this upcoming year.

DATA REQUESTS, REFERRALS & RESEARCH ADVISORY SERVICES

The RDI continues to respond to data and referral requests from communities. The RDI received a total of 50 requests for information and support, including 27 requests for statistical data, 11 requests for research advisory services, 6 requests for custom data or research support, 5 requests for referral, 4 requests for RDI resources and support using RDI tools, 3 requests for an analysis of trends, and 2 requests for RDI research reports.

This year the RDI will formalize mechanisms to receive, respond and track requests for research support. Referral requests will aim to connect organizations with faculty and students through in-class projects at our regions' colleges and with other organizations with similar research interests. In an effort to support community-based research in the region the RDI will be offering a new research advisory service this upcoming year as RDI capacity allows. Advisory services will focus on research ethics, design and related data collection instruments. Organizations are invited to complete a Request for Advisory Services submission form that will then be referred to a member of the RDI research team for a follow-up phone consultation. Feedback will then be provided to the organization(s) to best position the research project to address its stated goals and objectives.



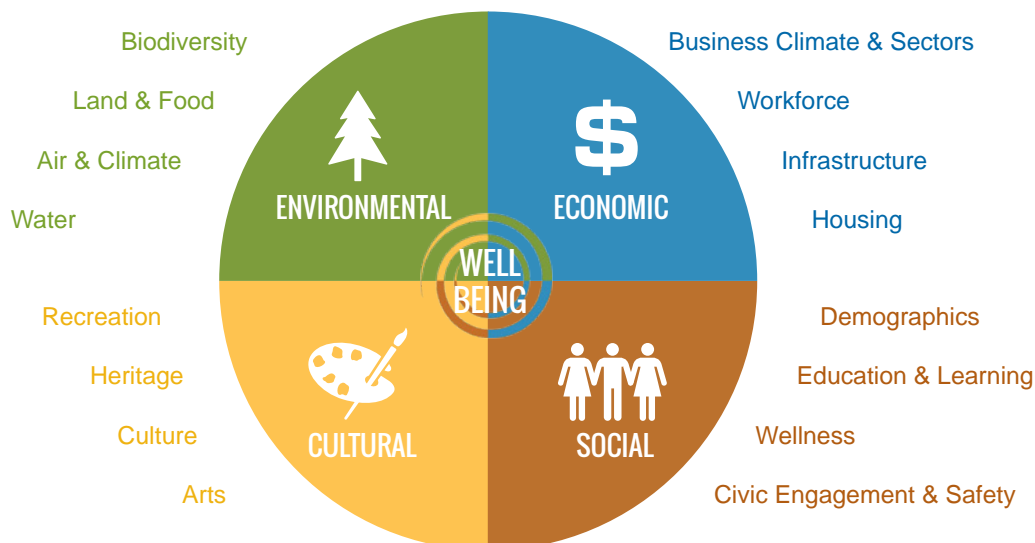
KNOWLEDGE MOBILIZATION

The RDI has amassed significant data and research related to rural development in the Columbia Basin-Boundary region and is now starting to mobilize this knowledge. Outreach and extension activities including one-on-one consultations, awareness raising at regional events, business retention and expansion training, research presentations, a speakers series, development of knowledge videos, and purposeful links to learners through co-op placements and in-class applied research projects.

CONSULTATIONS AND RAISING AWARENESS

This year, our research team engaged in one-on-one consultations with over 140 economic, social, cultural and environmental stakeholders from across the region in an effort to inform the RDI's strategic plan and applied research agenda, including State of the Basin and Digital Basin projects. The RDI research team also raised awareness of the RDI, products and services through existing networks (Canadian Rural Revitalization Foundation, Community Futures, Chambers of Commerce, CBT Directed Funds Committees, Invest Kootenay, Kootenay Conservation Program, and the Columbia Basin Watershed Network) and at regional events such as the Association of Kootenay Boundary Local Governments Conference in April, the Regional CED Forum in May, the Regional Economic Development Forum in May, and the CBT Symposium in October.

STATE OF THE BASIN Indicators Framework

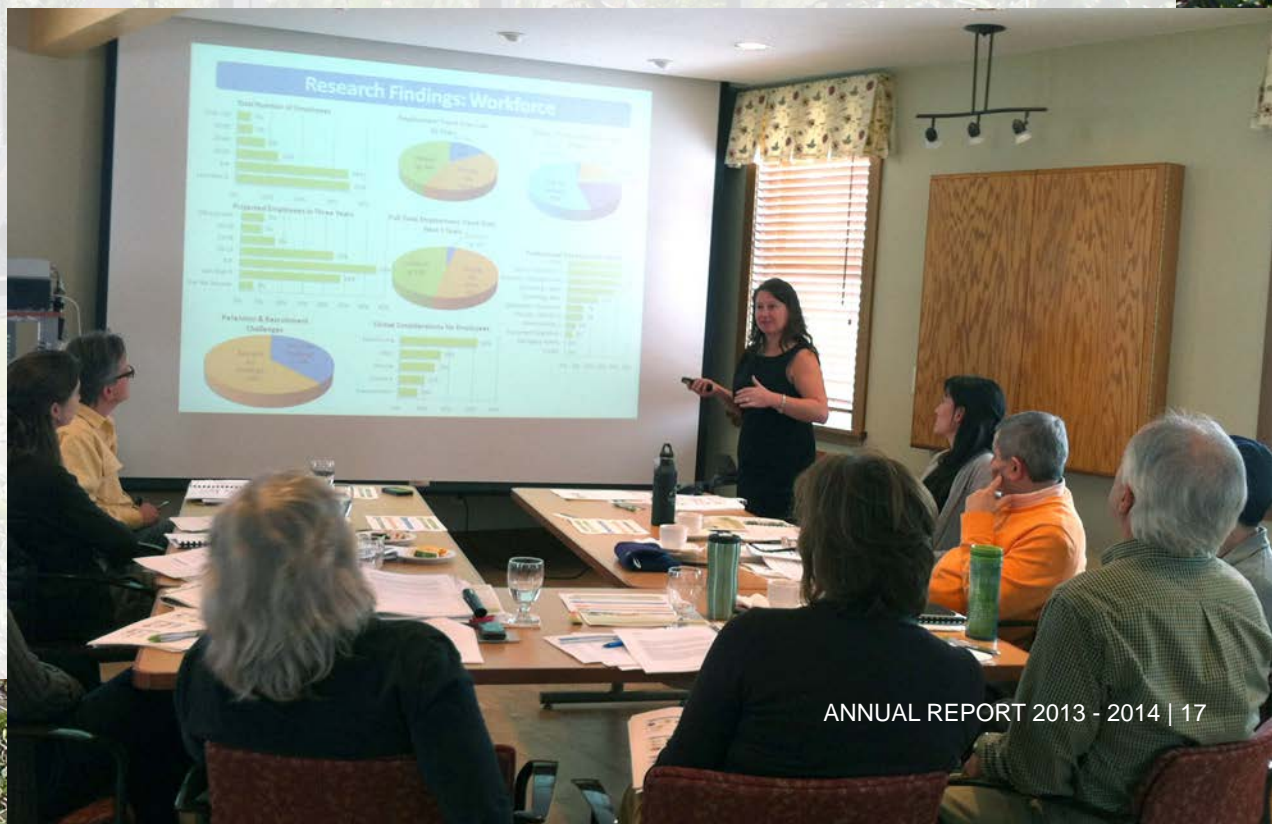




TRAINING & PRESENTATIONS

Business retention and expansion and related technology training was delivered to 15 participants through one-on-one training and a workshop hosted in partnership with the College of the Rockies in June.

Related BRE training tools were also developed or refined, including the BRE Manual, updated Regional Short and Long BRE Surveys, an updated analytic and reporting framework, and a BRE Community Leads Sheet. A total of 24 research presentations were delivered this year, including 2 in-class Selkirk College presentations, 9 community BRE presentations, 8 corridor or regional presentations, 3 provincial presentations, and 2 national presentations. Topics focused on business retention and expansion, regional conditions and trends, and rural college applied research capacity.



KNOWLEDGE MOBILIZATION cont'd...

SPEAKER SERIES & KNOWLEDGE VIDEOS

Four speakers provided presentations as part of a Speakers Series, including Chief Economist for Central Credit Union 1 Helmut Pastrick, national prize winning Canadian political scientist Dr. Paul Kershaw, Chair of the Royal Architectural Institute of Canada Dr. Douglas MacLeod, and leading Colorado State University ecologist Dr. Greg Newman.

Topics included the BC and Kootenay economy, social policy in Canada, technology for the construction industry, and using technologies to collect data in the field for environmental scientists.

A series of 18 Knowledge Videos were also produced this year, including 5 adopting digital technology profiles, 3 BRE orientation and training videos, 1 State of the Basin community-level indicators profile, and 7 summary and full-length videos of presentations delivered as part of the Speakers Series.



Dr. Douglas MacLeod



Helmut Pastrick



Dr. Paul Kershaw



LINKS TO LEARNERS

The RDI supported a total of 12 Co-op Education positions this past year, including 8 full-time placements and 4 part-time placements. Four of the Co-Op positions were with the Selkirk Geospatial Research Centre.

The RDI also worked with 6 Integrated Environmental Planning students on their second year term projects. Projects were focused on climate change and infrastructure risk, mapping of regional festivals, assessment of tree age classes in old growth management areas, mapping of forestry roads in community watersheds, mapping of invasive fish, and wetland mapping.



Megan Deas, ADT & Digital Basin projects



Ezra Buller, Digital Basin project



Adam Butler, BRE & Resource Database projects

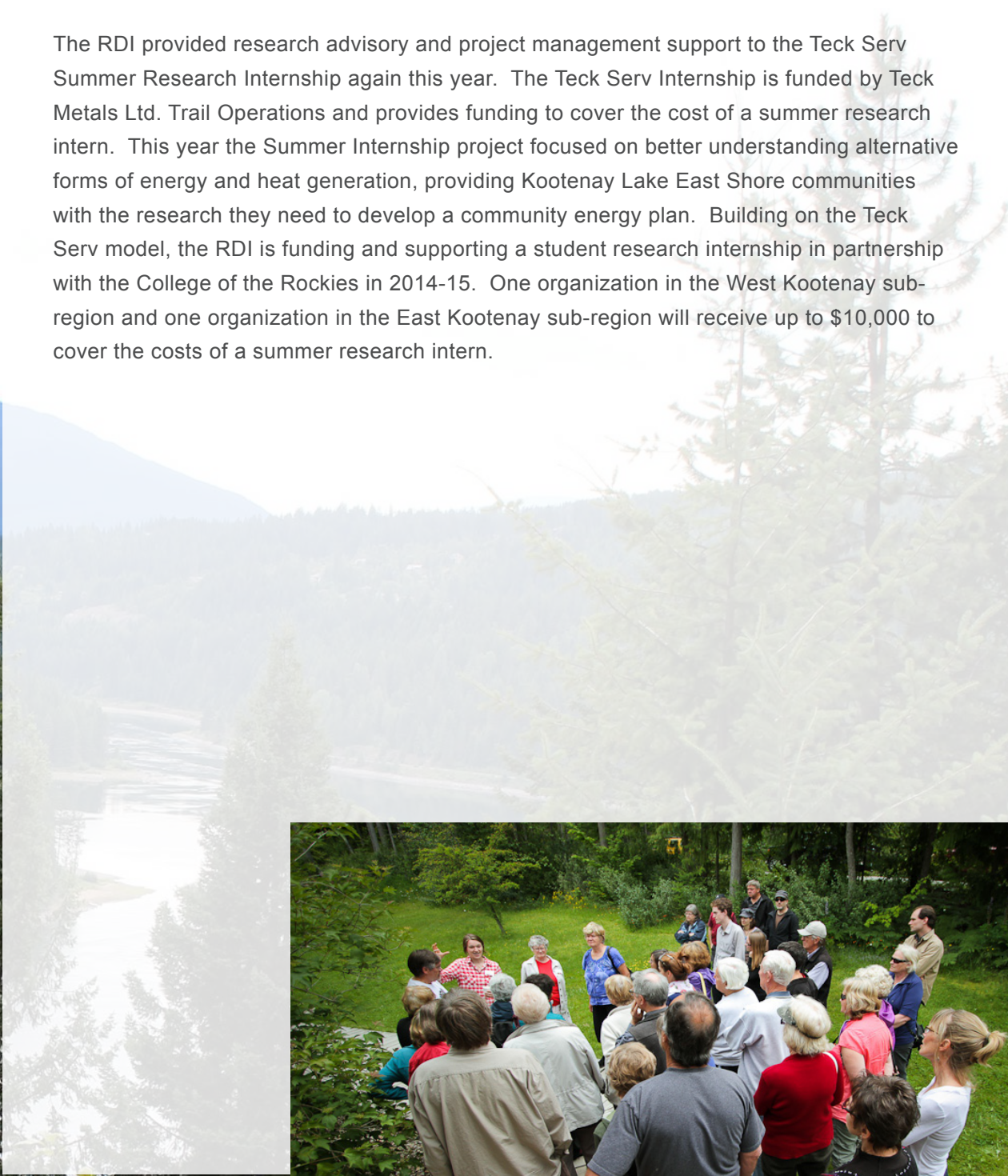
KNOWLEDGE MOBILIZATION MOVING FORWARD

Outreach and extension activities will continue to expand this year to support the mobilization of knowledge related to applied research projects. The focus this year will be on releasing a series of Trends Analysis Briefs and encouraging the use of the Digital Basin, releasing Employment Lands research findings and encouraging the use of the Employment Lands Inventory and site selection tool to support investment and job growth, sharing lessons learned from the Adopting Digital Technologies project with leaders at our regions' colleges and exploring related opportunities for research collaborations, and continuing to provide training and research support to business retention and expansion projects across the region.

Knowledge Videos will continue to be produced and posted on the RDI website to further disseminate research findings. This year, the RDI will also be releasing a series of Knowledge Briefs accompanied by regional webinars in an effort to share innovative approaches to rural development, lessons learned from other jurisdictions and build a common regional understanding of key rural topics. The webinars will enable RDI researchers to present the highlights from each Knowledge Brief and create an opportunity for regional discussion around each topic.

REGIONAL RESEARCH COLLABORATION

The RDI provided research advisory and project management support to the Teck Serv Summer Research Internship again this year. The Teck Serv Internship is funded by Teck Metals Ltd. Trail Operations and provides funding to cover the cost of a summer research intern. This year the Summer Internship project focused on better understanding alternative forms of energy and heat generation, providing Kootenay Lake East Shore communities with the research they need to develop a community energy plan. Building on the Teck Serv model, the RDI is funding and supporting a student research internship in partnership with the College of the Rockies in 2014-15. One organization in the West Kootenay sub-region and one organization in the East Kootenay sub-region will receive up to \$10,000 to cover the costs of a summer research intern.



REGIONAL RESEARCH COLLABORATION cont'd...

THE MANUFACTURING & TECHNOLOGY SECTOR INITIATIVE

The Manufacturing and Technology Sector Initiative (MATS) was a 2-year Columbia Basin Trust initiative supporting economic diversification and development in the Columbia Basin, with a focus on the manufacturing and technology sectors. Delivered in partnership by Kootenay Association for Science and Technology (KAST) and Kootenay Rockies Innovation Council (KRIC), MATS focused on the development, retention and expansion of Basin manufacturing and technology businesses. MATS activities included: conferences, workshops and networking events; business retention and expansion (BRE); a virtual

incubator where businesses can find mentors and track their progress through business development in an online setting; and peer mentoring groups designed to help entrepreneurs address the issues and barriers they experience in building their businesses. The RDI supported this initiative through the provision of ongoing research and advisory support, including BRE specific training and research (data analysis and reporting) support.

COLUMBIA BASIN BUSINESS RETENTION & EXPANSION PROJECT

REPORT ON MANUFACTURING
AND TECHNOLOGY SECTORS
APRIL 2013



MATS
Manufacturing and Technology Sector Initiative
Business Retention and Expansion





NATIONAL & PROVINCIAL RESEARCH PARTNERSHIPS

The RDI is listed as a partner on 3 Social Sciences and Humanities Research Council of Canada partnership grant proposals submitted in mid-February. First, the University of Alberta's partnership grant entitled Rural Sustainability: Context, Complexity, Planning, Policy and Implementation aims to link a series of established community-university relationships across Canada focused on improving rural sustainability. The project aims to explore what constitutes sustainability in diverse rural contexts, how integration between and across pillars can actually occur, how different community-based approaches to sustainability plan implementation affect community capitals, and how rural communities are transforming the vision and wide-ranging goals set out in their planning processes into measurable, justifiable and meaningful actions.

Second, Athabasca University's partnership grant entitled Social Economy Intermediaries and the Transition to Sustainability: Scaling Innovation builds on the Regional Innovation Chair's involvement with the BC-Alberta Social Economy Research Alliance (BALTA). BALTA's overall goal for this research project is to understand, communicate, and animate research and learning that will increase the capacity of social economy intermediaries to scale sustainability innovations. The project rests on 2 assumptions:

(1) Proven social economy innovations at the niche level, if scaled, will significantly contribute to the robustness and durability of the transition to sustainability;

(2) Social economy intermediaries bring together multiple stakeholders and other assets in a way that is essential to the spread of proven innovations and the scaling of their impact. The research design will build on an existing approach of balancing practitioner and academic leadership and participation in themed research clusters. These clusters are:

- Food Security;
- Affordable Shelter & Alternative Land Tenure;
- Energy Use & Carbon Reduction;
- Finance; and
- Cooperative Place-Making.

Third, Brandon University's partnership grant entitled Rural Policy Learning Commons: Building Rural Policy through International Comparative Analysis aims to enhance Canadian prosperity by identifying and analyzing policy options relevant to rural and northern places, evaluating these options in the context of national and international policy innovations, and building leadership capacity among rural and northern researchers, policy-makers, and practitioners. Initial policy themes include human capital and migration, natural resource development, governance, and infrastructure and services.

Research Team

The Regional Innovation Chair (RIC) in Rural Economic Development, an RDI coordinator and a team of Masters level researchers (3 FTE) with expertise in diverse areas such as resource management, public policy, land use planning, economics and education staff the RDI. This interdisciplinary team, with the support of faculty from other post-secondary institutions within and outside of the region and consultants as needed, is well positioned to manage topic-specific indicator portfolios, provide research advisory services to community-based research projects, to collectively address pressing regional research needs and opportunities, and to mobilize knowledge generated from RDI research efforts and lessons learned from similar rural regions elsewhere.



DR. TERRI MACDONALD

Terri is the Regional Innovation Chair in Rural Economic Development at Selkirk College and also serves as the senior inaugural officer of the Columbia Basin Rural Development Institute. She holds a Ph.D. in Educational Studies from the University of British Columbia, and an M.A. in Policy and Administration from the University of Calgary, as well as a B.Sc. and B.Ed. from Lakehead University. Terri has worked for over 12 years in economic development across BC, primarily in the Kootenay region. Research interests include regional economic development, the role of research, capacity and regional collaboration in rural development, and regional sustainability indicators. Her commitment to rural revitalization and strategic decision-making as a fundamental ingredient to planning for positive change is evidenced by an impressive track record of rural research and dissemination.



SHARON STODDART

Sharon has had a history of working in Chartered Accountant firms ending that career as an Insolvency Administrator with KPMG in Vancouver. Moving from the Lower Mainland to the Interior, she joined the staff of Kootenay School of the Arts as the Marketing Coordinator responsible for school and program marketing, recruitment, events, alumni relations and extension programming. Sharon later spent many years as the Program Marketing Coordinator with Selkirk College's Communications and Development Department, providing marketing support to programs within the college. Today, Sharon is the RDI Coordinator, supporting operations, communications and project management.



LAUREN RETHORET

Lauren is a full-time researcher with the RDI, working primarily on the environmental and economic pillars. She holds a Master's degree in Resource and Environmental Management (with a specialization in land use planning) from Simon Fraser University and a Bachelor's degree in Geography (with a specialization in globalization, society and the environment) from Carleton University. Lauren's research interests include community based resource management, landscape level planning, public policy in rural areas and sustainable infrastructure management. She has worked and studied in Columbia Basin rural development issues since 2008.

NADINE RAYNOLDS

Nadine is a part-time researcher with the RDI, working primarily on the cultural and social pillars. She is an organizer, facilitator, and educator with nearly 20 years of experience working with environmental and social change organizations, from small community-based groups to national non-profits. Nadine has a BSc in Environmental Science and an MA in Environmental Education and Communication. Nadine serves as a Councillor for the Village of New Denver, where she lives. Nadine's research focus is to explore the cultural well-being of the Columbia Basin Boundary Region through the State of the Basin initiative, as well as assisting with other RDI projects. She has a passion for good communication and leadership, thinking strategically, and working collaboratively. Nadine is excited about how RDI's research can contribute to building resilient and flourishing rural communities.



JONATHAN BUTTLE

Jonathan is a part-time researcher with the RDI, working primarily on the economic pillar. He is an economist with ten years of experience working on public policy issues in Canada. Jonathan has worked on issues such as: the economic impacts of unmitigated climate change, the role of carbon markets in Canadian forest policy, productivity enhancement in a rural setting, and spatial economic indicators and their analysis. Jonathan holds an MA in Environmental Economics (University of Victoria) and is an instructor in Selkirk College's School of University Arts and Sciences.



ADRIAN LESLIE

Adrian is a part-time researcher with the RDI, working primarily on the environmental pillar. He has been working in the Columbia Basin on ecosystem conservation, restoration and research for over 10 years. He is a Registered Professional Biologist with experience working in both terrestrial and aquatic ecosystems from low elevation floodplains to high elevation forests throughout the Columbia Basin. He has a Master's degree in Environment and Management and has lead several research and restoration projects, and has extensive experience helping organizations complete environmental projects. Adrian has worked with a variety of environmental stakeholders in the Columbia Basin including non-profit, governmental, educational, industrial, and private organizations. He has a keen interest in conservation and restoration of critical habitat, a desire to help people and organizations make effective decisions based on the latest environmental research, and a deep appreciation for the ecosystems in the Columbia Basin. Adrian is also an instructor in Selkirk College's School of Environment and Geomatics.







COLUMBIA BASIN RURAL DEVELOPMENT INSTITUTE
ANNUAL REPORT 2013 - 2014
cbrdi.ca

Photos by: David R. Gluns, Sharon Stoddart, Megan Deas