



COLUMBIA BASIN
RDI
RURAL DEVELOPMENT INSTITUTE

UNDERSTAND • CONNECT • MOBILIZE

Aging in the Kootenay-Boundary: Exploring Demographic Shifts & Implications



Agenda

- Population Trends
- Characteristics
- Considerations

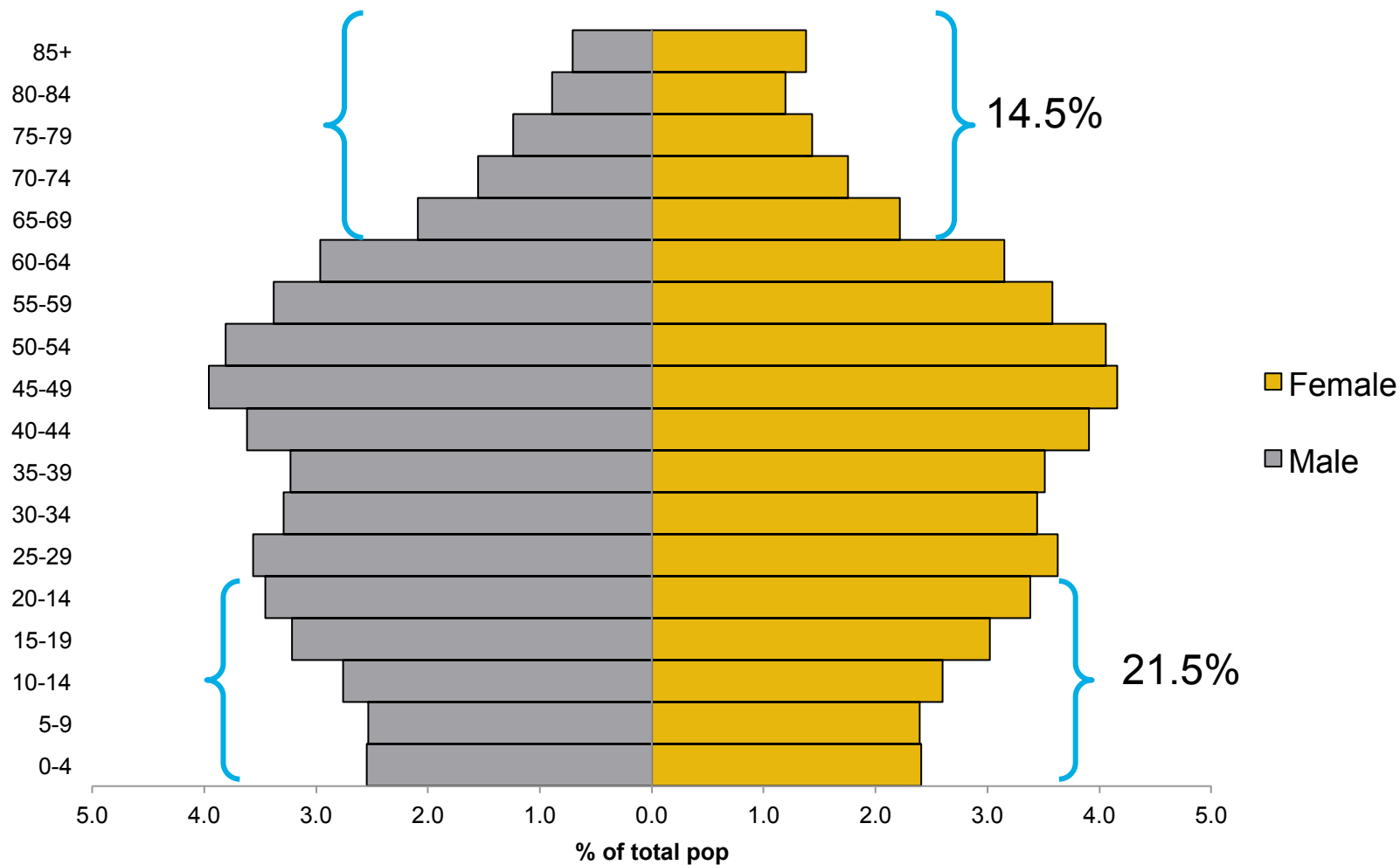


Population Trends

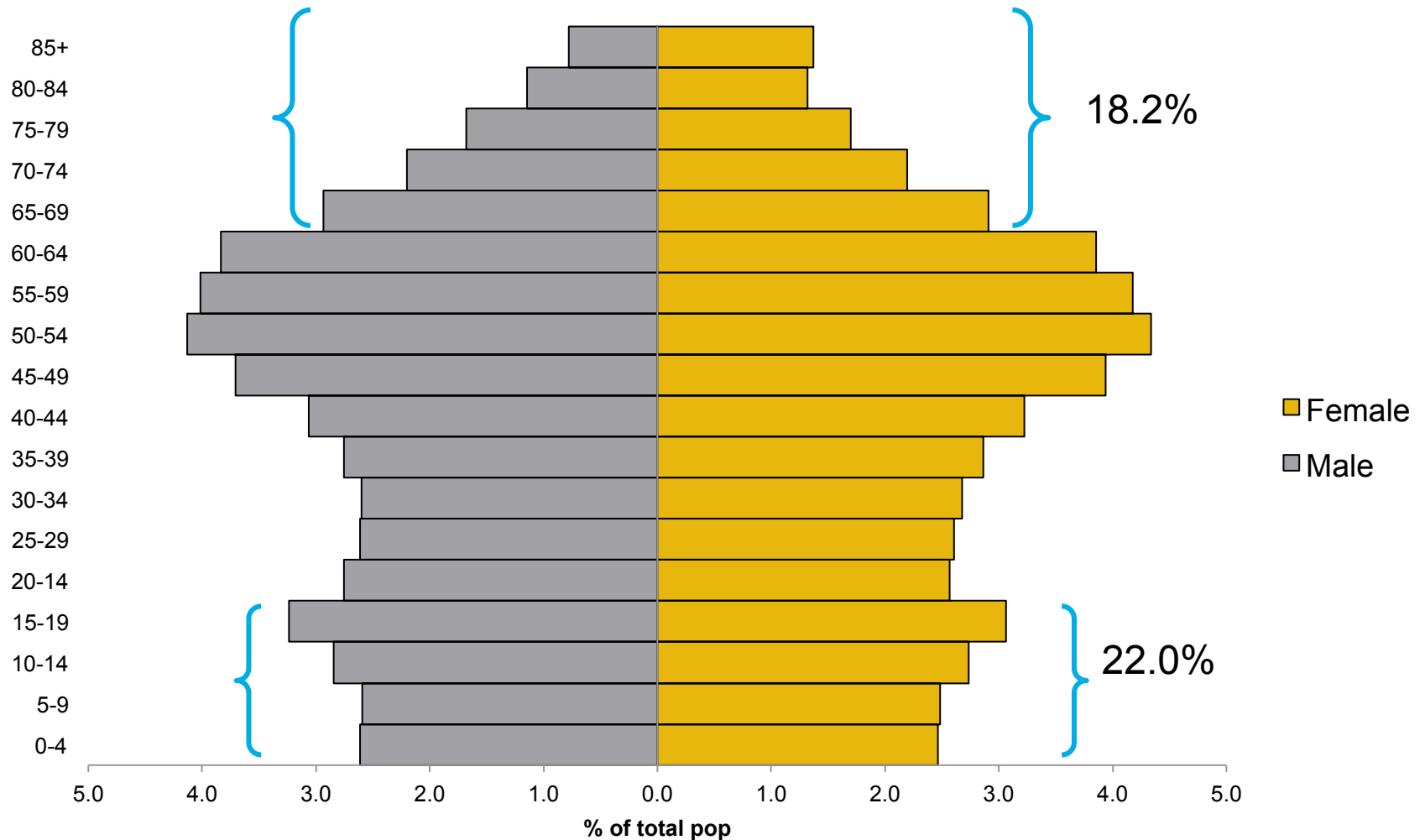
- Aging 'Baby Boom' population
- Out-migration of youth / young families
- Aging Workforce
- 'Resource Frontier Aging'
- Lower birth rates / longer life spans



Population in BC Metropolitan Areas, 2011

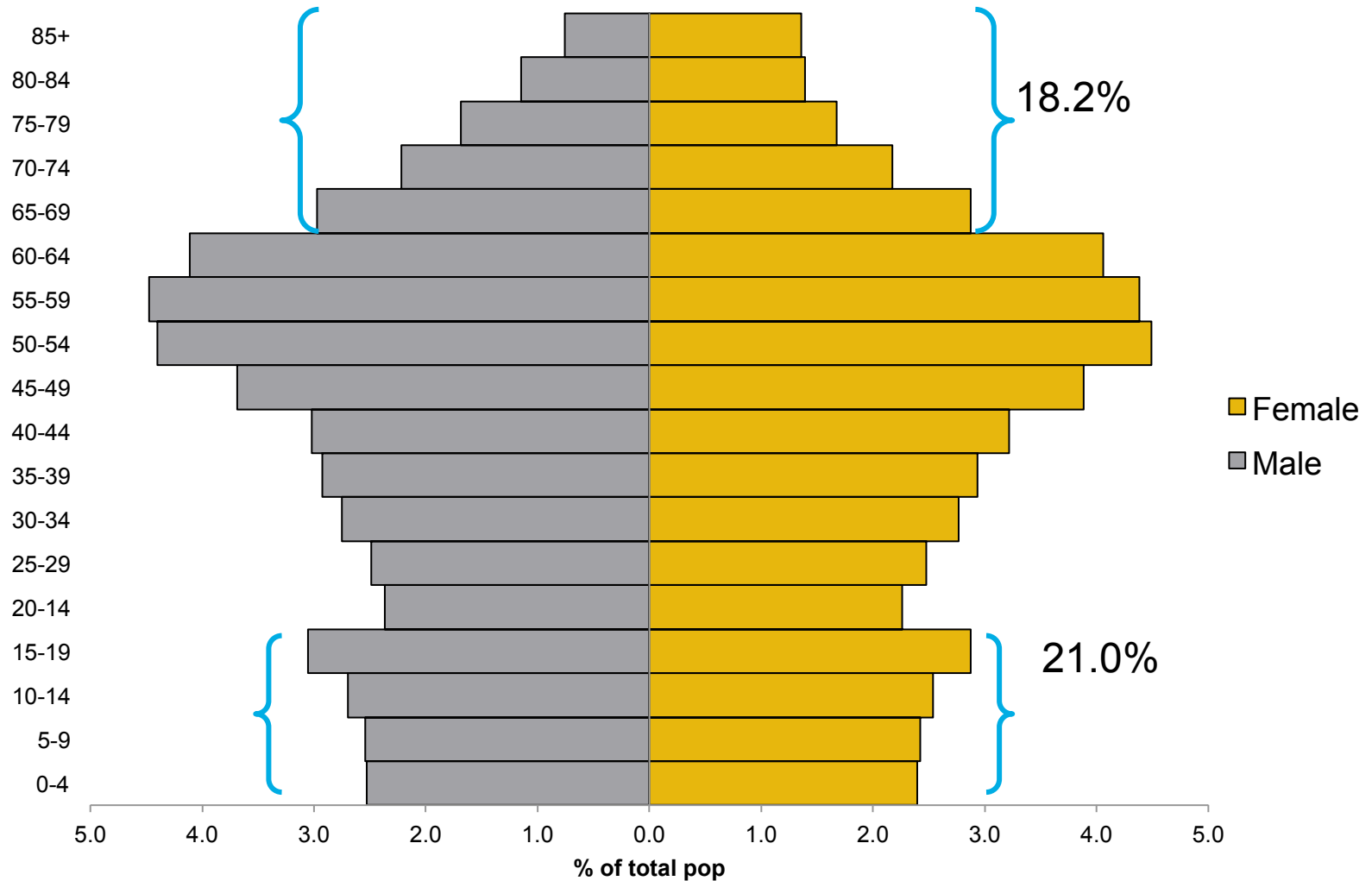


Population in BC Non-Metro Areas, 2011



Source: Statistics Canada, 2011 Census

Population in Basin-Boundary Region, 2011



Source: Statistics Canada, 2011 Census

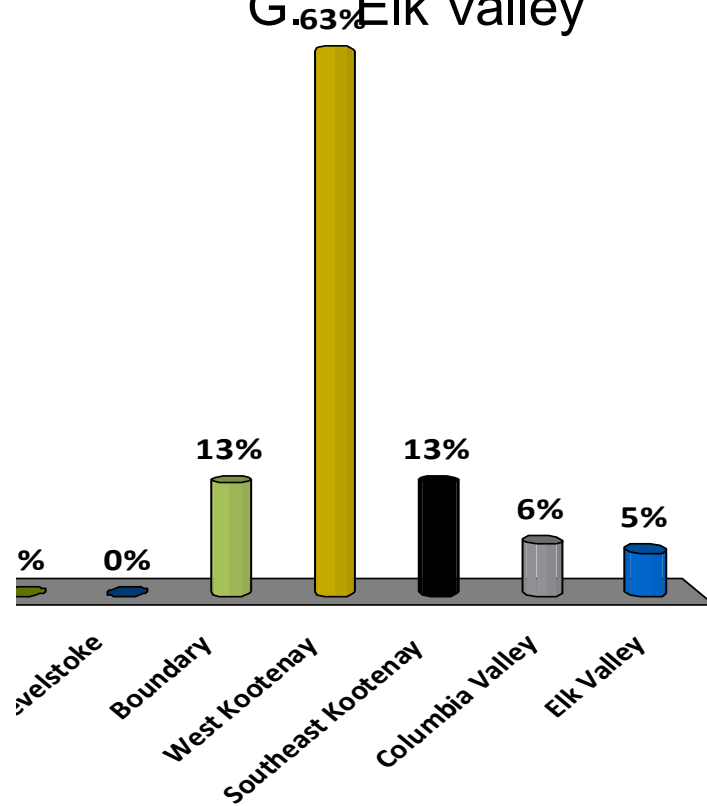
Canada by the Numbers

Number of seniors in 2011 4,945,065	Per cent increase 2001-2011 27	Per cent increase in population under 65 years of age over the same 10-year period 9
Number of seniors in 2001 3,888,550		
Projected number of seniors in 2036 10,379,600	Projected per cent increase in population under 65 years of age over the same 25-year period 17	Projected per cent increase 2011-2036 110



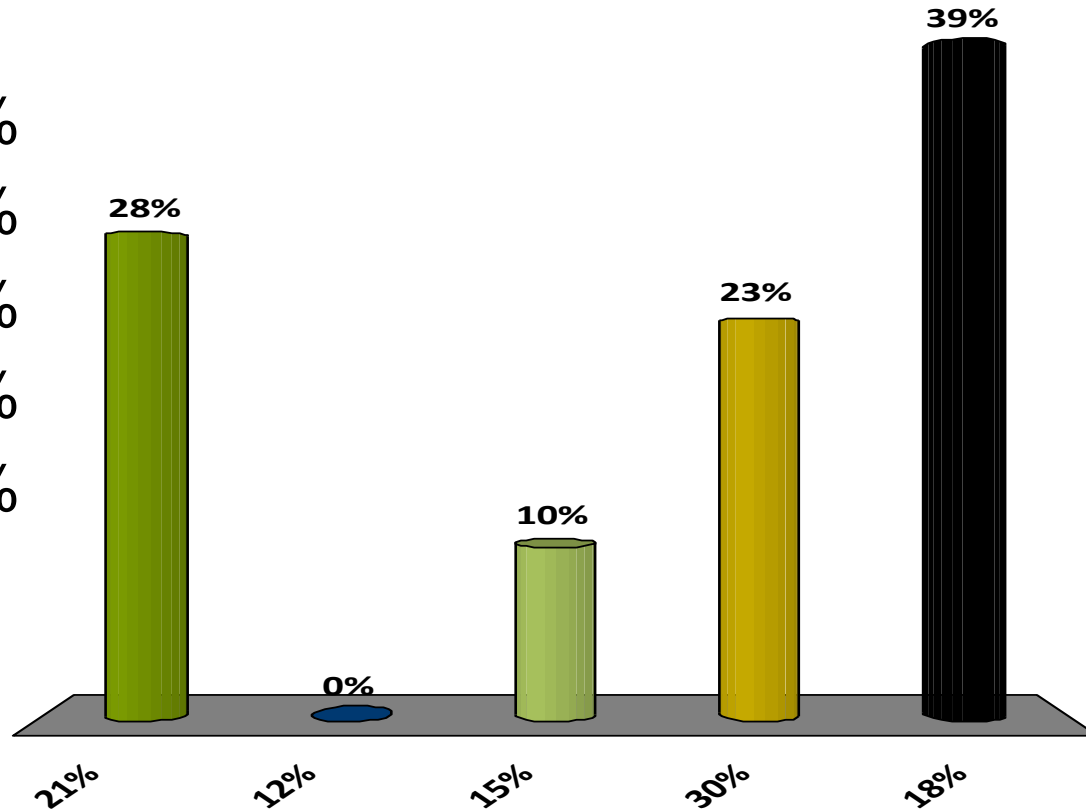
Which 'corridor' do you live in?

- A. Valemount
- B. Revelstoke
- C. Boundary
- D. West Kootenay
- E. Southeast Kootenay
- F. Columbia Valley
- G. Elk Valley

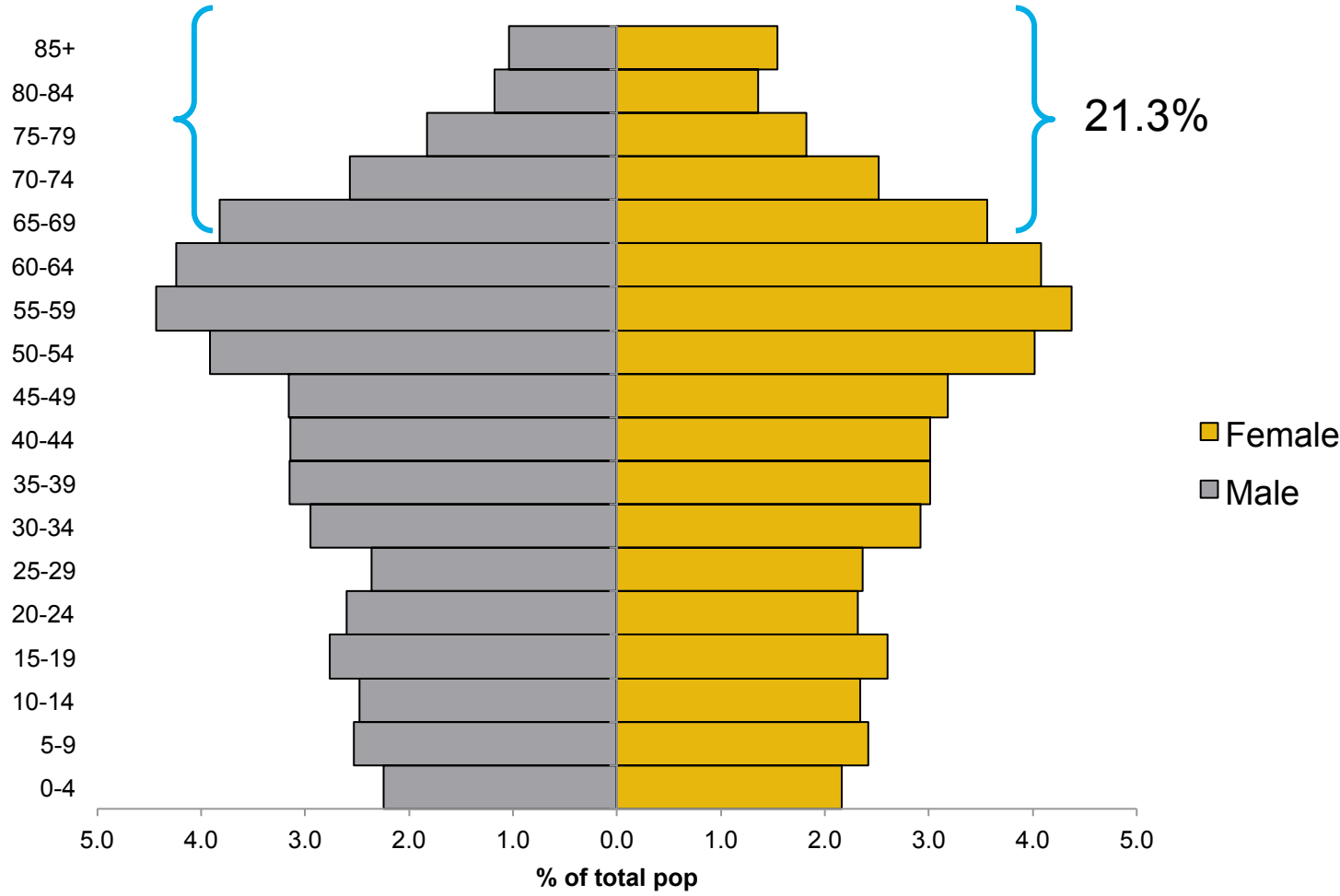


Seniors are projected comprise what % of our regional population today (2015)?

- A. 21%
- B. 12%
- C. 15%
- D. 30%
- E. 18%



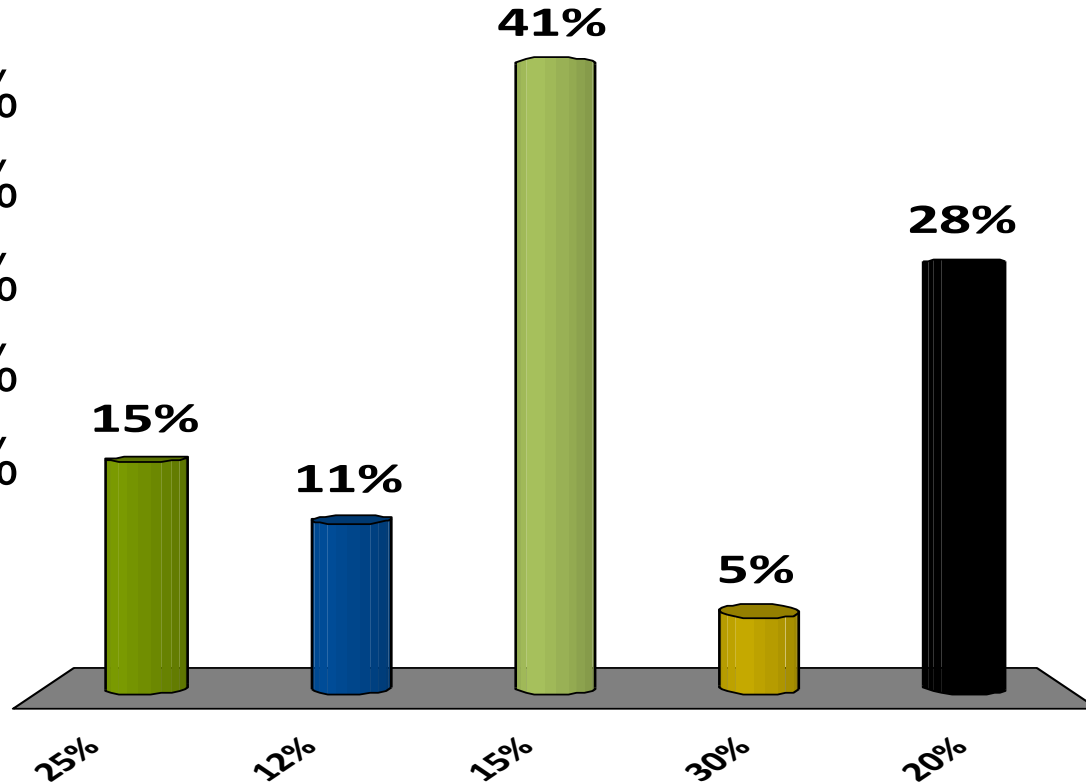
Population in Basin-Boundary Region, 2015



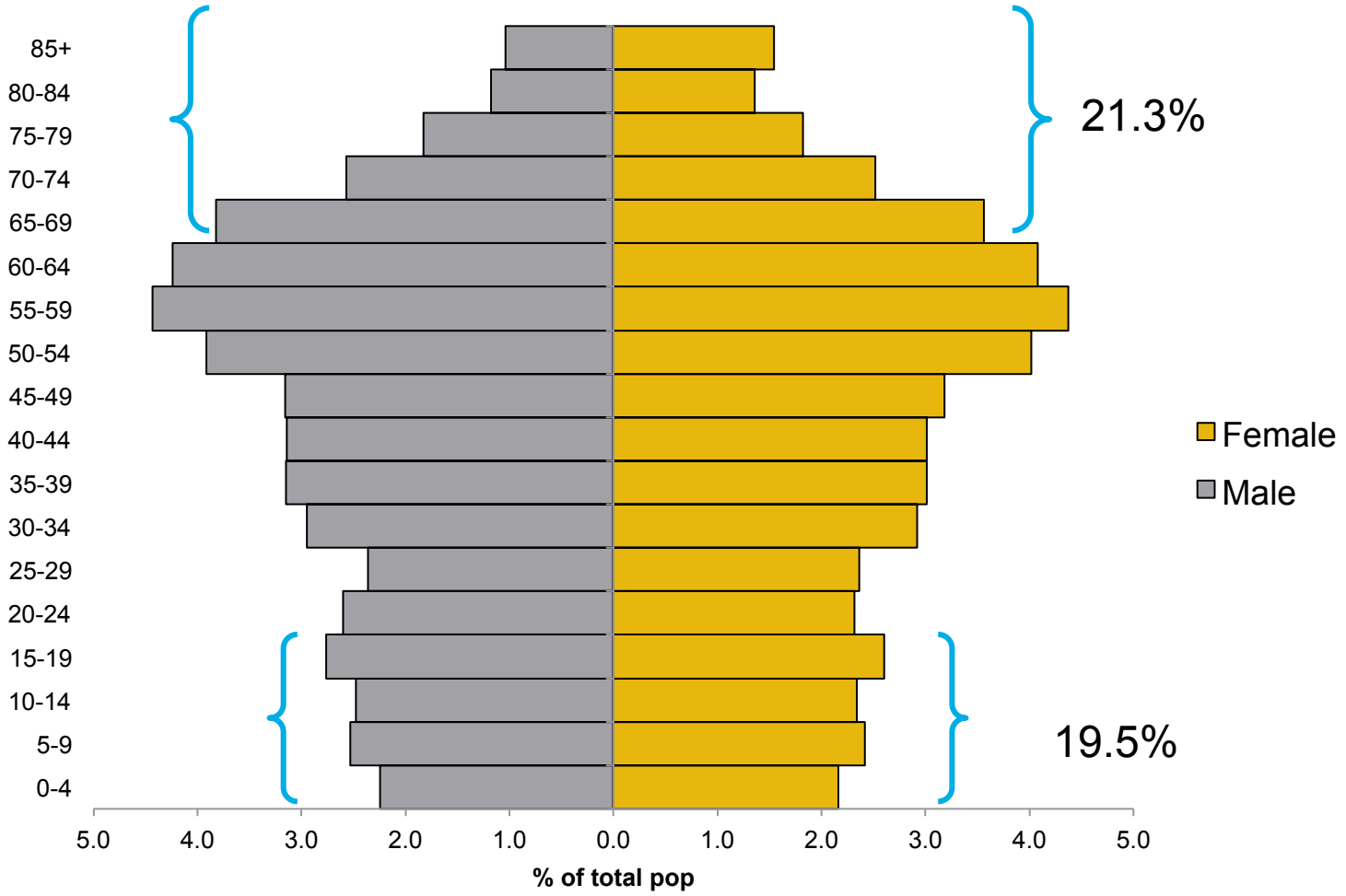
Source: BC Stats, Population Projections

Under 20s are projected comprise what % of our regional population today (2015)?

- A. 25%
- B. 12%
- C. 15%
- D. 30%
- E. 20%



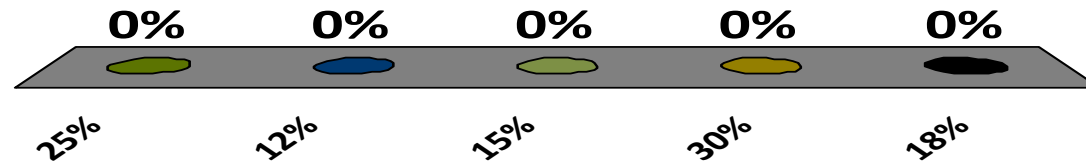
Population in Basin-Boundary Region, 2015



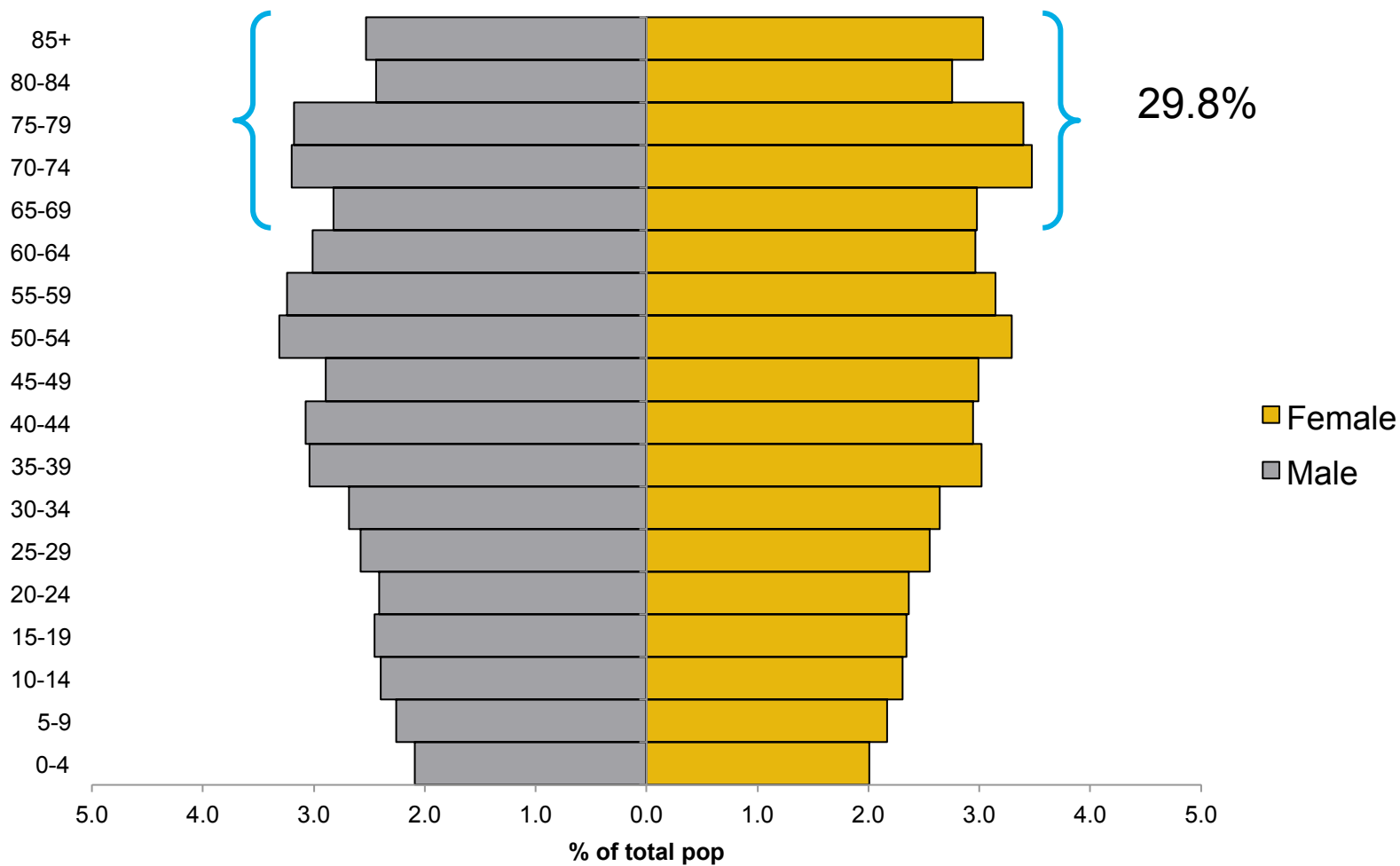
Source: BC Stats, Population Projections

Seniors are projected comprise what % of our regional population by 2035?

- A. 25%
- B. 12%
- C. 15%
- D. 30%
- E. 18%



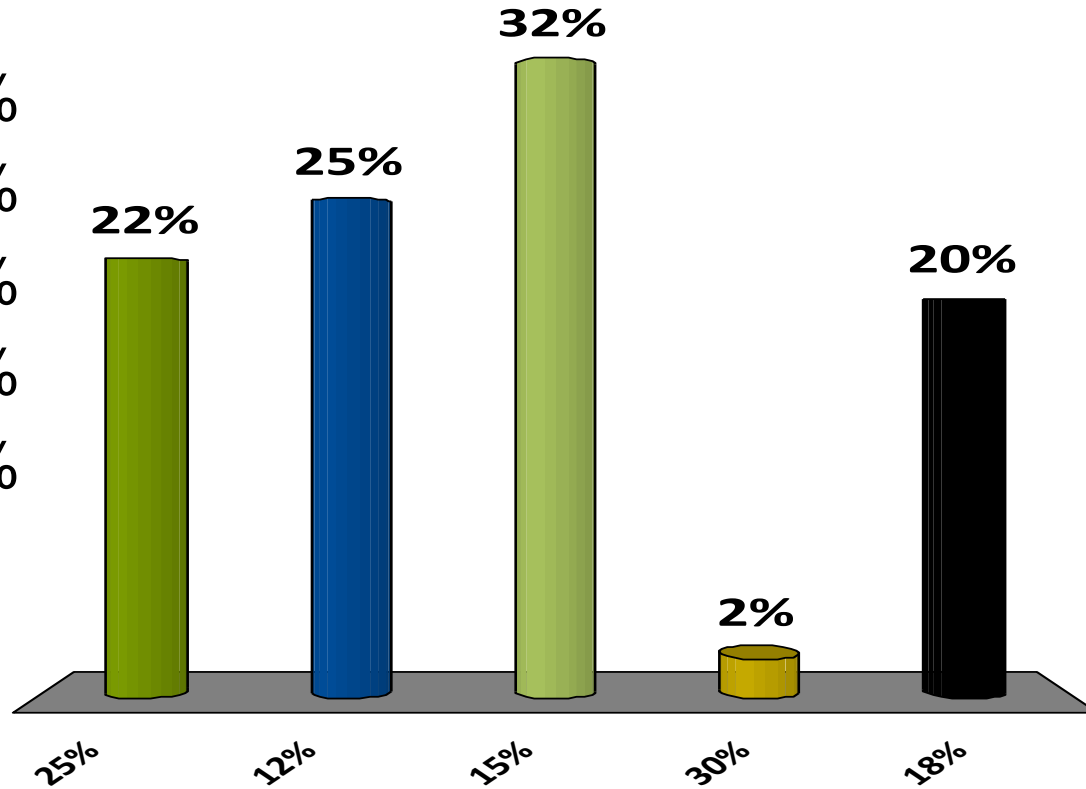
Population in Basin-Boundary Region, 2035



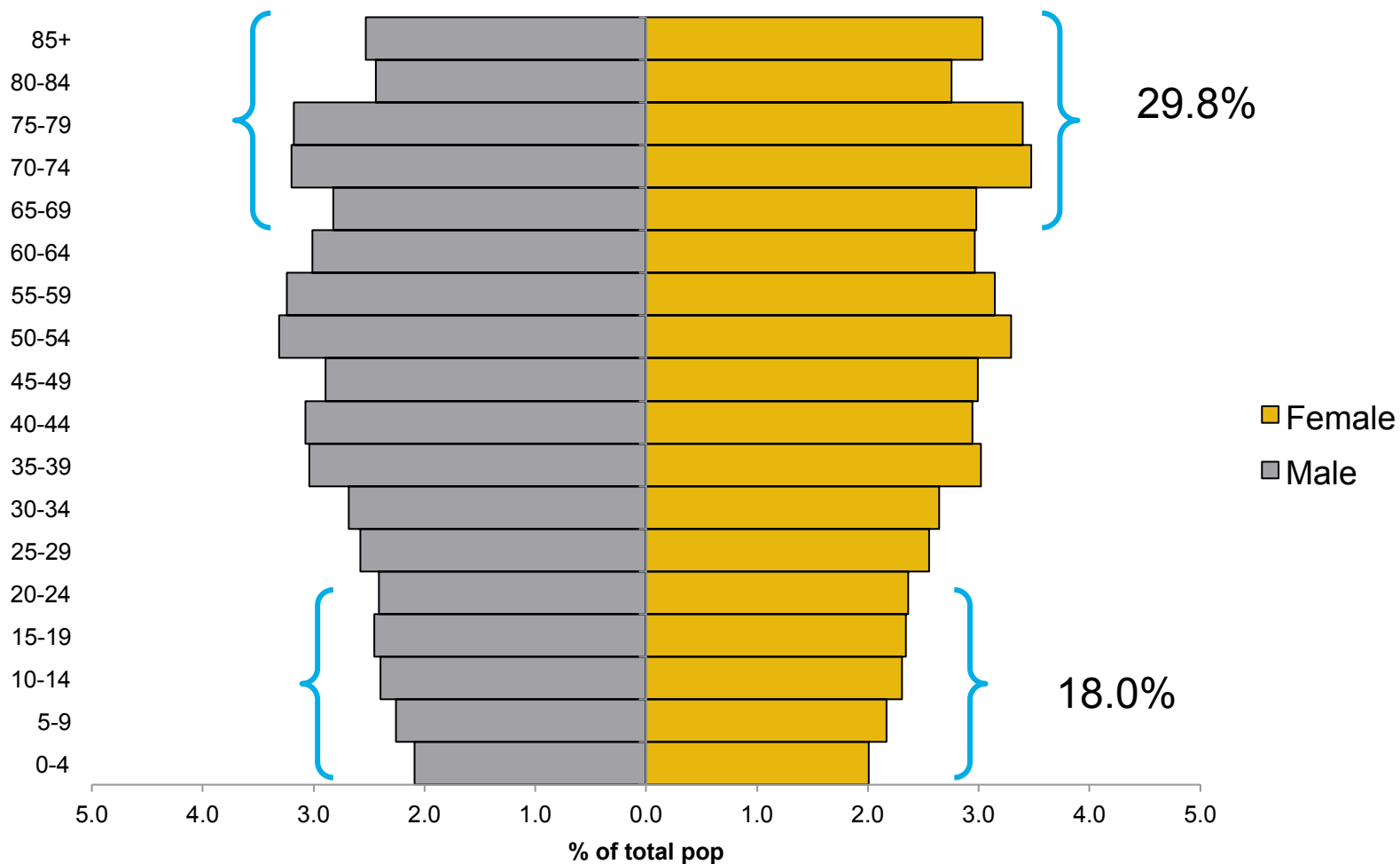
Source: BC Stats, Population Projections

Under 20s are projected to comprise what % of our regional population by 2025?

- A. 25%
- B. 12%
- C. 15%
- D. 30%
- E. 18%

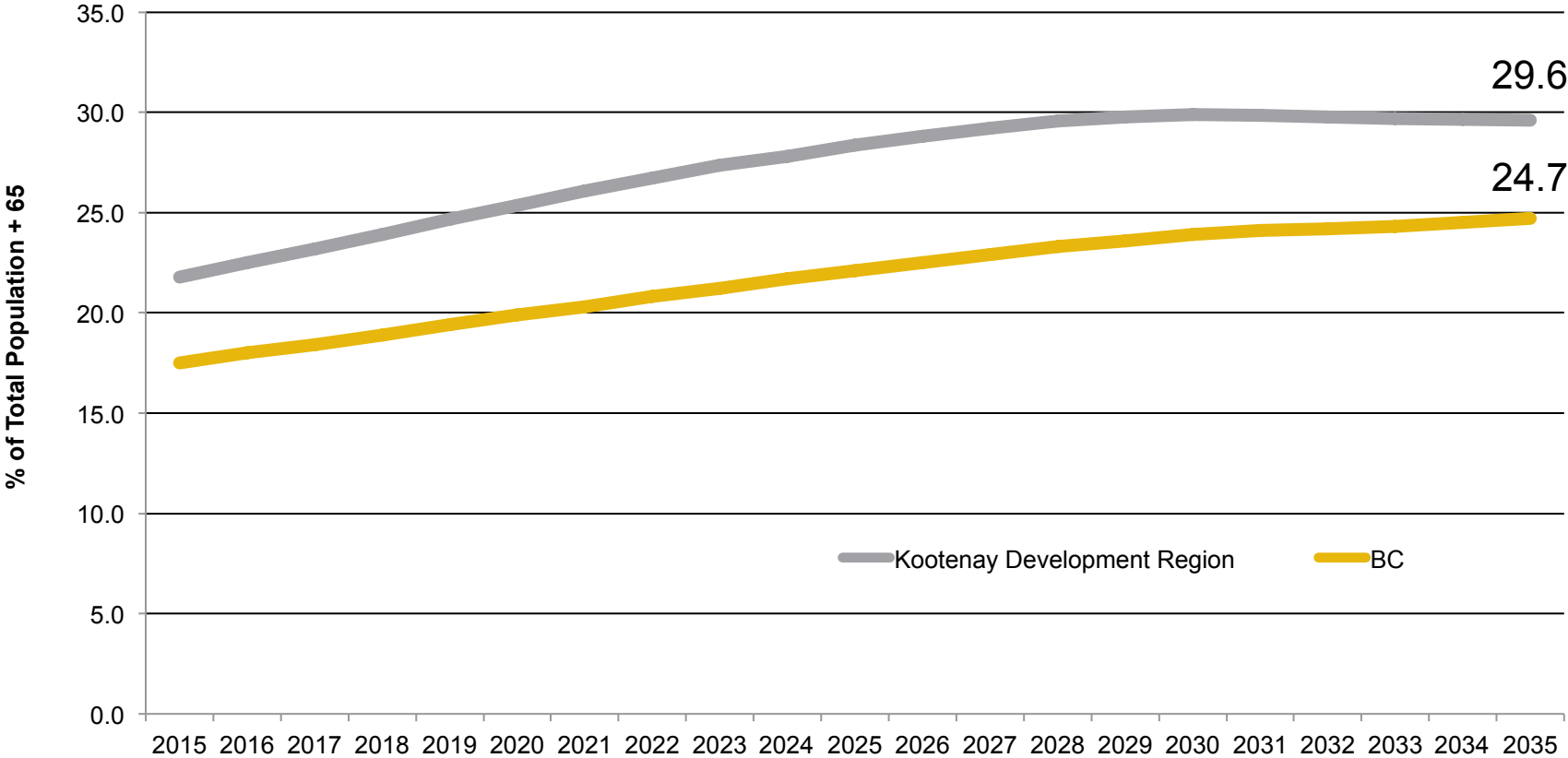


Population in Basin-Boundary Region, 2035



Source: BC Stats, Population Projections

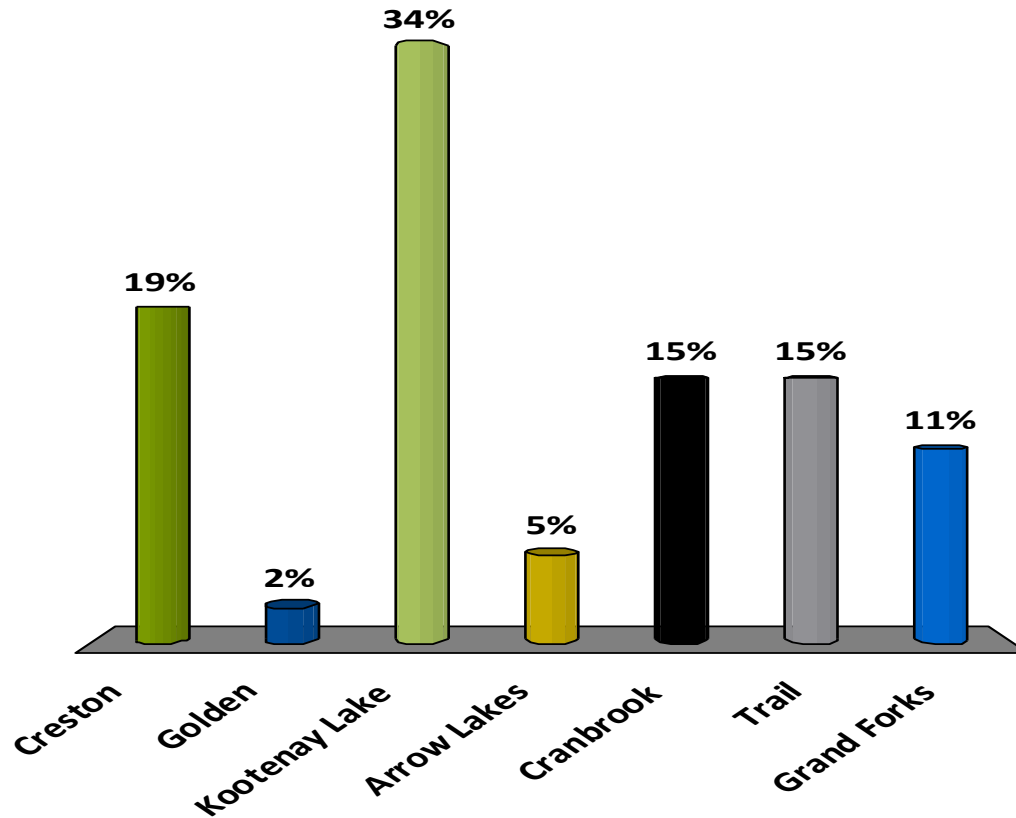
Projected Size of Senior Component, BC and KDR



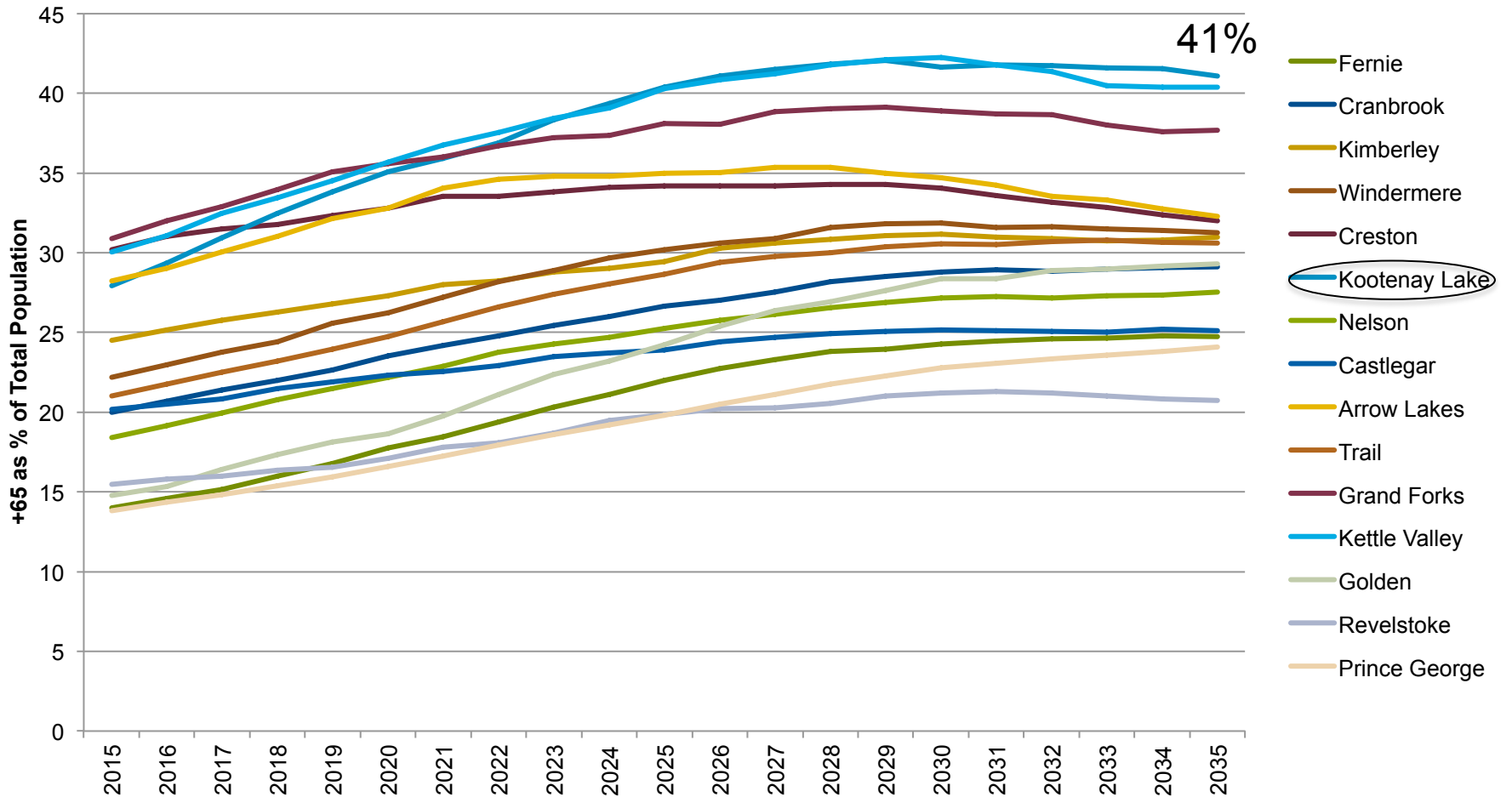
Source: BC Stats, Population Projections

Which LHA will have the highest seniors component by 2035?

- A. Creston
- B. Golden
- C. Kootenay Lake
- D. Arrow Lakes
- E. Cranbrook
- F. Trail
- G. Grand Forks

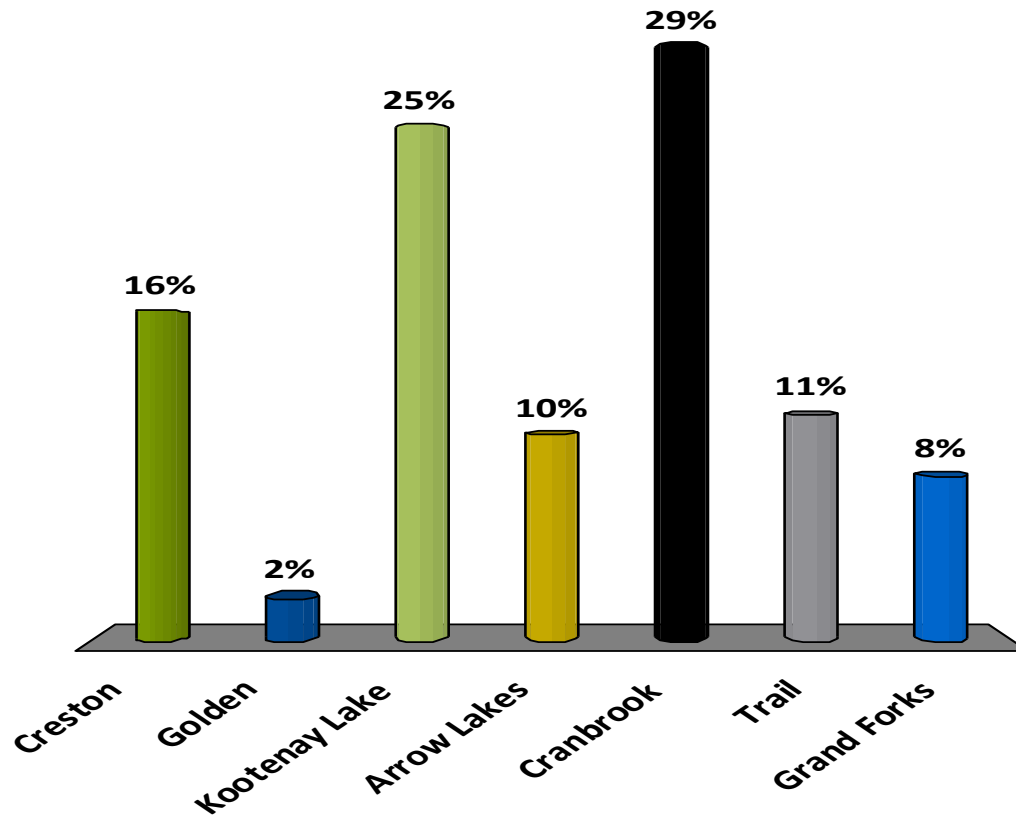


Projected Size of Senior Component by LHA



Which LHA will see the greatest increase in seniors between now and 2035?

- A. Creston
- B. Golden
- C. Kootenay Lake
- D. Arrow Lakes
- E. Cranbrook
- F. Trail
- G. Grand Forks



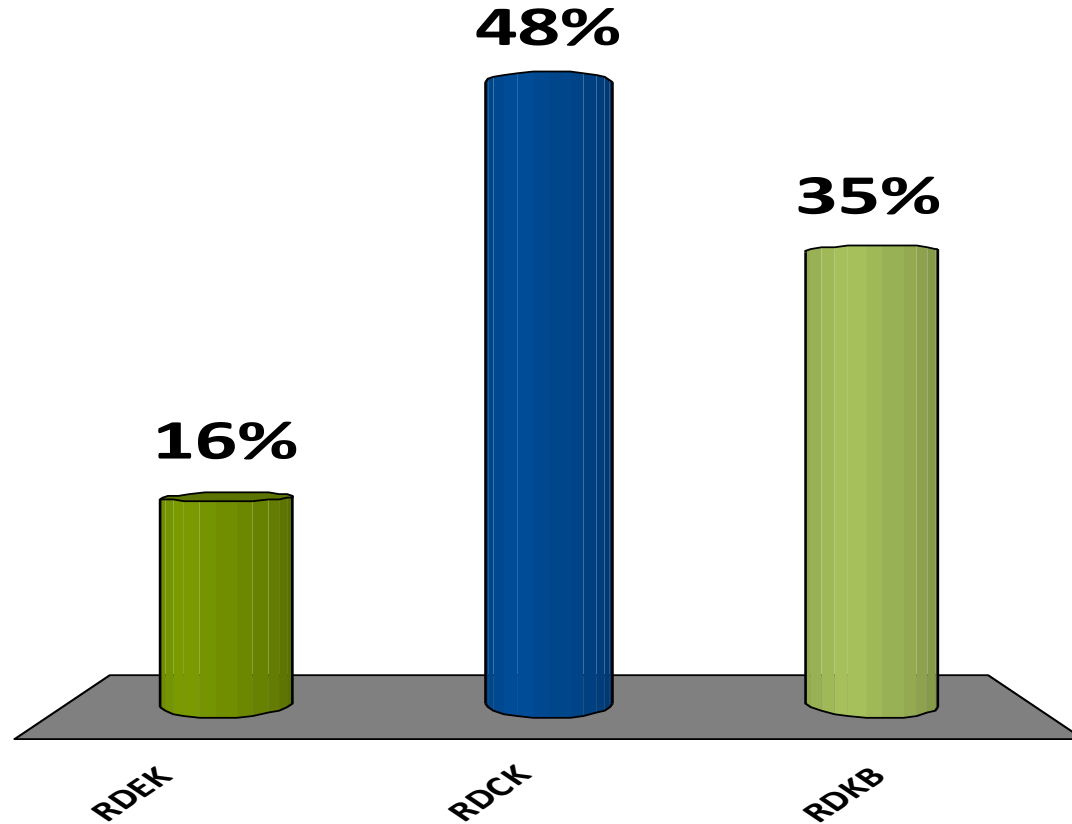
Projected 20-Year Change in Senior Component by LHA

	Total Population			Population + 65		
	2015	2035	Change	2015	2035	Change
Fernie	15045	16721	+11%	2106	4139	+97%
Cranbrook	25596	26960	+5%	5113	7855	+54%
Kimberley	8124	8246	+2%	1989	2553	+28%
Windermere	9014	9684	+7%	2000	3027	+51%
Creston	12490	13816	+11%	3771	4419	+17%
Kootenay Lake	3348	3026	-10%	935	1243	+33%
Nelson	25187	26562	+5%	4632	7307	+58%
Castlegar	13828	16369	+18%	2790	4109	+47%
Arrow Lakes	4589	4419	-4%	1295	1427	+10%
Trail	19018	19283	+1%	3997	5906	+48%
Grand Forks	8462	8110	-4%	2612	3055	+17%
Kettle Valley	3260	2959	-9%	979	1195	+22%
Golden	7052	7462	+6%	1042	2185	+110%
Revelstoke	7829	8580	+10%	1211	1779	+47%
Prince George	94685	98334	+4%	13083	23687	+81%

Source: BC Stats, Population Projections

Which regional district has the highest % of households that are owned by seniors?

- A. RDEK
- B. RDCK
- C. RDKB



Seniors Housing Characteristics

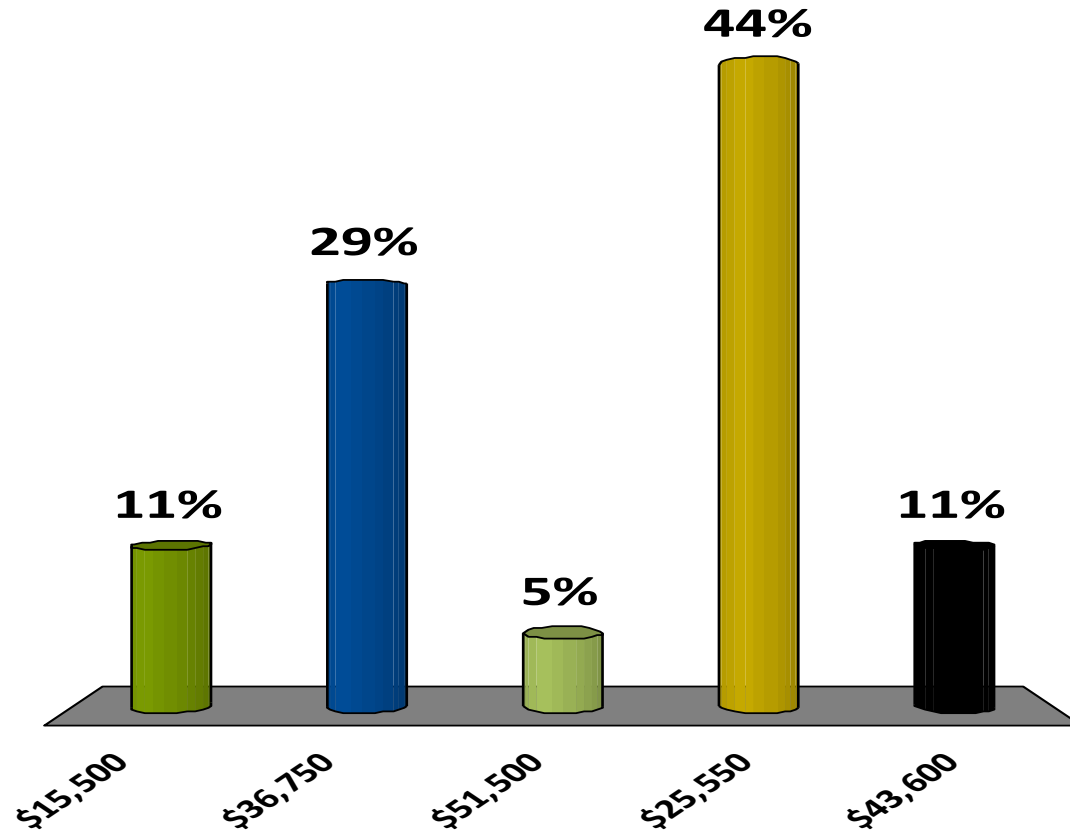
	BC	RDKB	RDCK	RDEK
% of senior households* that are owned	81	88	84	84
% of senior households that are single detached dwellings	51	77	73	70

*a “senior household” is a household that is primarily maintained by a person 65 years of age and older
Source: Statistics Canada, National Household Survey



What was the median income for seniors in rural BC in 2013?

- A. \$15,500
- B. \$36,750
- C. \$51,500
- D. \$25,550
- E. \$43,600



Seniors Income Characteristics



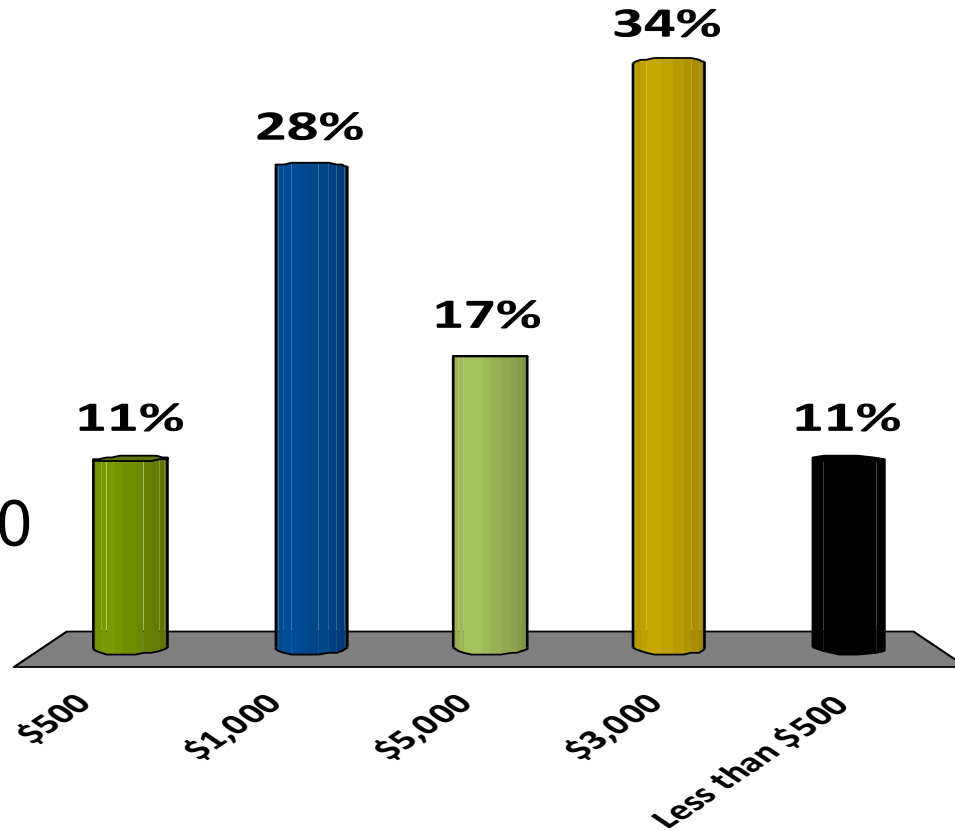
Median Total Income, 2013, 65+

	2009	2013	Change
BC	24,260	26,020	7%
Cranbrook Census Agglomeration	25,030	28,170	13%
BC Rural (Non CMA-CA)	23,610	25,550	8%

Source: Statistics Canada, CANSIM (Taxfiler Data)

On average, how much did Canadian seniors spend on recreation in 2013?

- A. \$500
- B. \$1,000
- C. \$5,000
- D. \$3,000
- E. Less than \$500



Seniors Spending Patterns

Rank of Major Expenditures, Senior Households*, Canada, 2013

	All age groups	55-64 years	65+ years	Average Annual Spending for 65+
Shelter	1	1	1	11,541
Transportation	2	2	2	7,975
Food	3	3	3	6,091
Household Operations	4	5	5	3,110
Recreation	5	4	6	2,716
Clothing and Accessories	6	6	7	2,096
Health Care	7	7	4	3,189

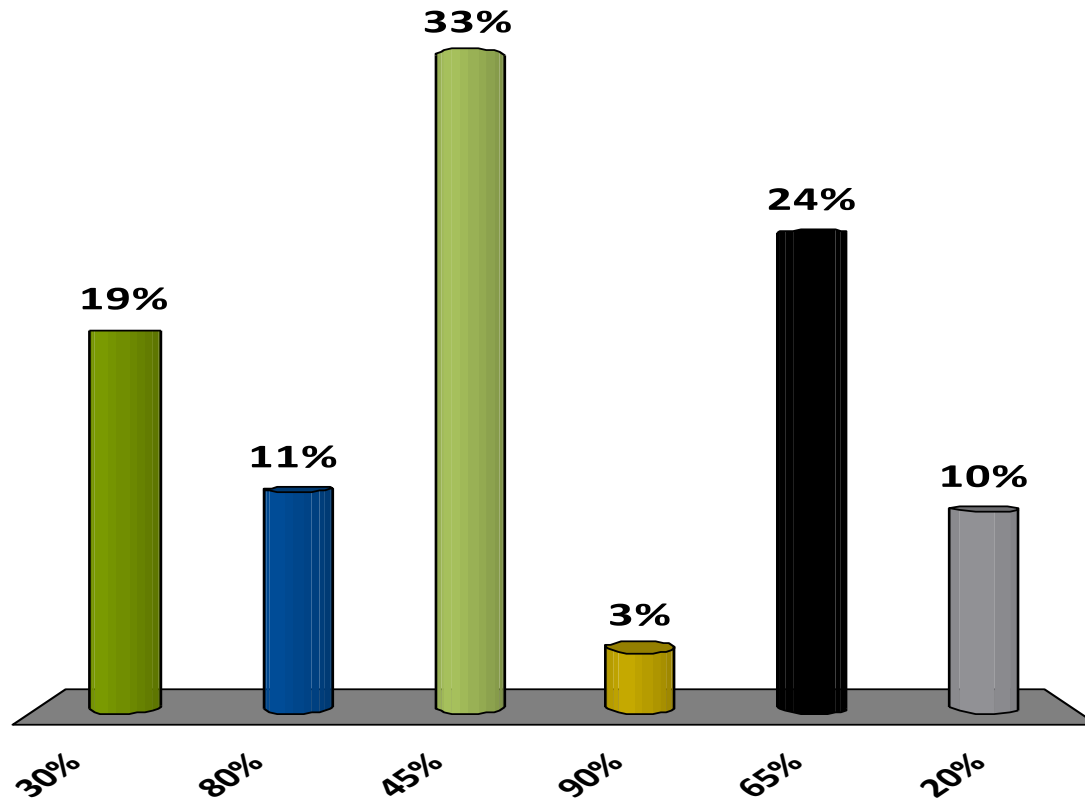
* A senior household is a household with the SHS reference person being +55 years of age

Source: Statistics Canada, CANSIM (Survey of Household Spending)



What % of new job openings will be due to retirement between 2012 and 2022?

- A. 30%
- B. 80%
- C. 45%
- D. 90%
- E. 65%
- F. 20%



New Job Openings

Accumulative job openings over 10 years (2012 - 2022)



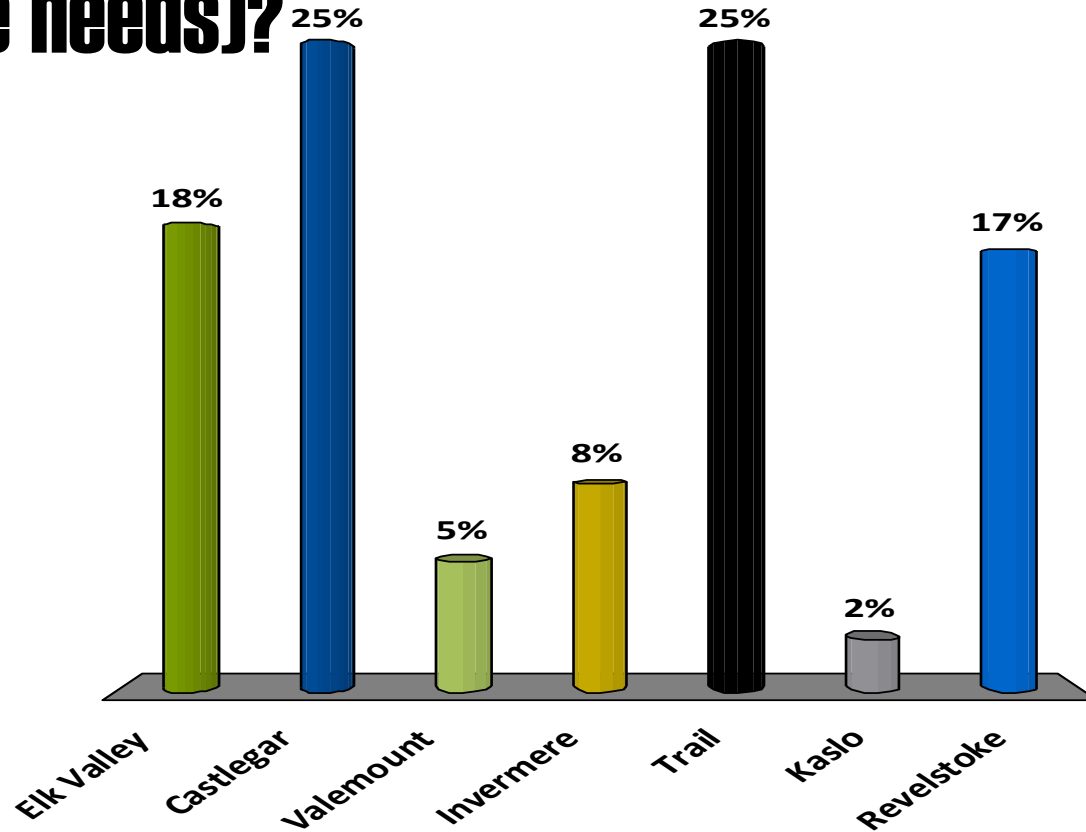
- **19.6 %**
5,700 openings
New jobs due to economic growth
- **80.4 %**
23,500 openings
Replacement of retiring workers

Source: B.C. Labour Market Scenario Model



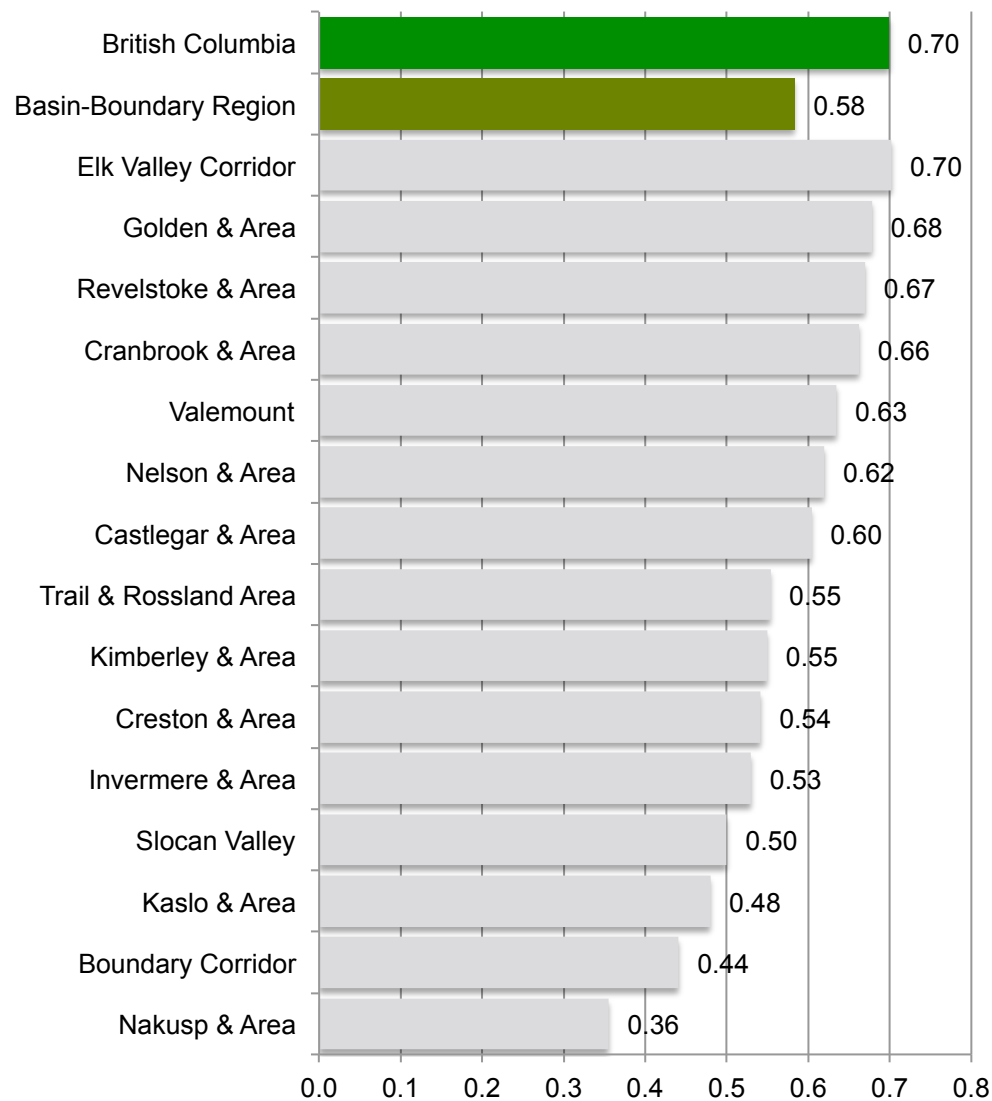
Which community has the highest labour force replacement ratio (best positioned to meet future labour force needs)?

- A. Elk Valley
- B. Castlegar
- C. Valemount
- D. Invermere
- E. Trail
- F. Kaslo
- G. Revelstoke





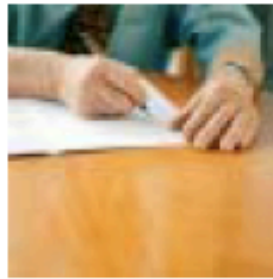
Labour Force Replacement Ratio (2011) (Population 0-15 : Population 50-64)



Source: Statistics Canada, 2011 Census

Regional strategies and demographic ageing

Age Proofing Toolkit

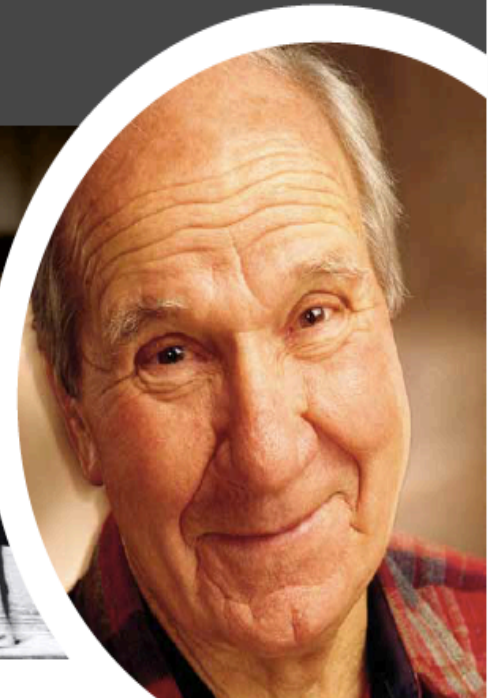


Resources

FCM FEDERATION OF CANADIAN MUNICIPALITIES / FÉDÉRATION CANADIENNE DES MUNICIPALITÉS

CANADA'S AGING POPULATION

The municipal role in Canada's demographic shift





COLUMBIA BASIN
RDI
RURAL DEVELOPMENT INSTITUTE

UNDERSTAND • CONNECT • MOBILIZE

Aging in the Kootenays: Exploring Demographic Shifts & Implications

Learn more at cbrdi.ca

