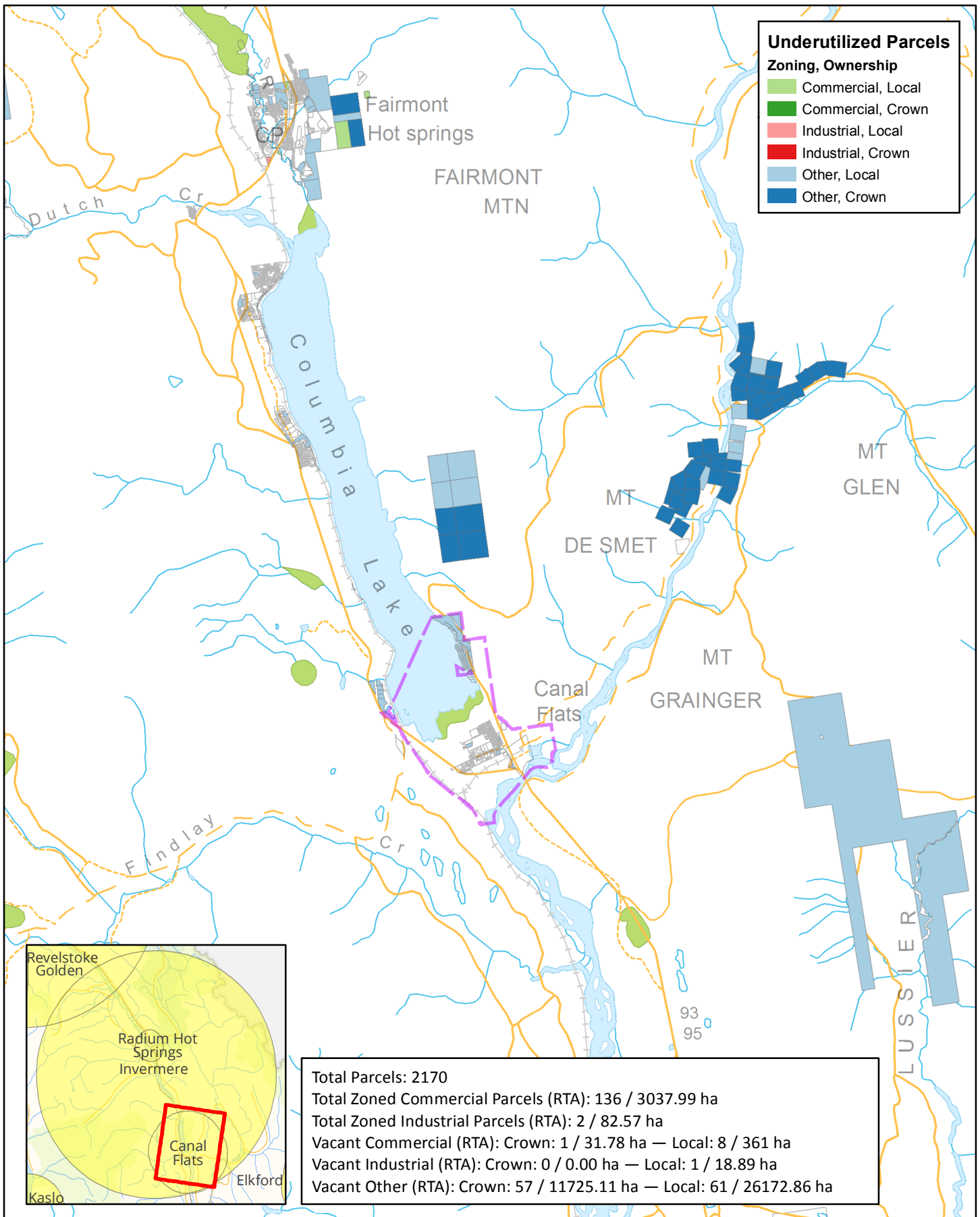
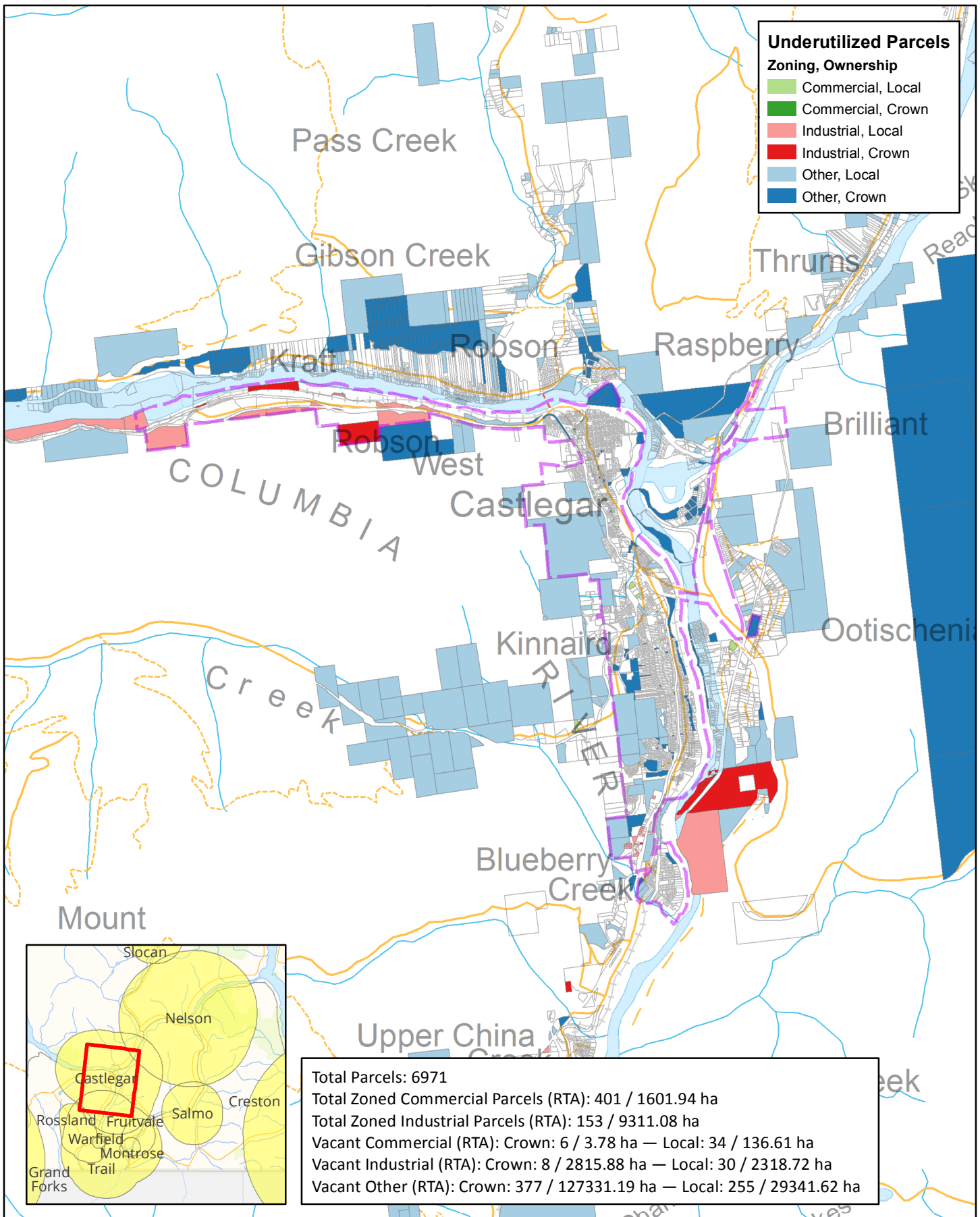


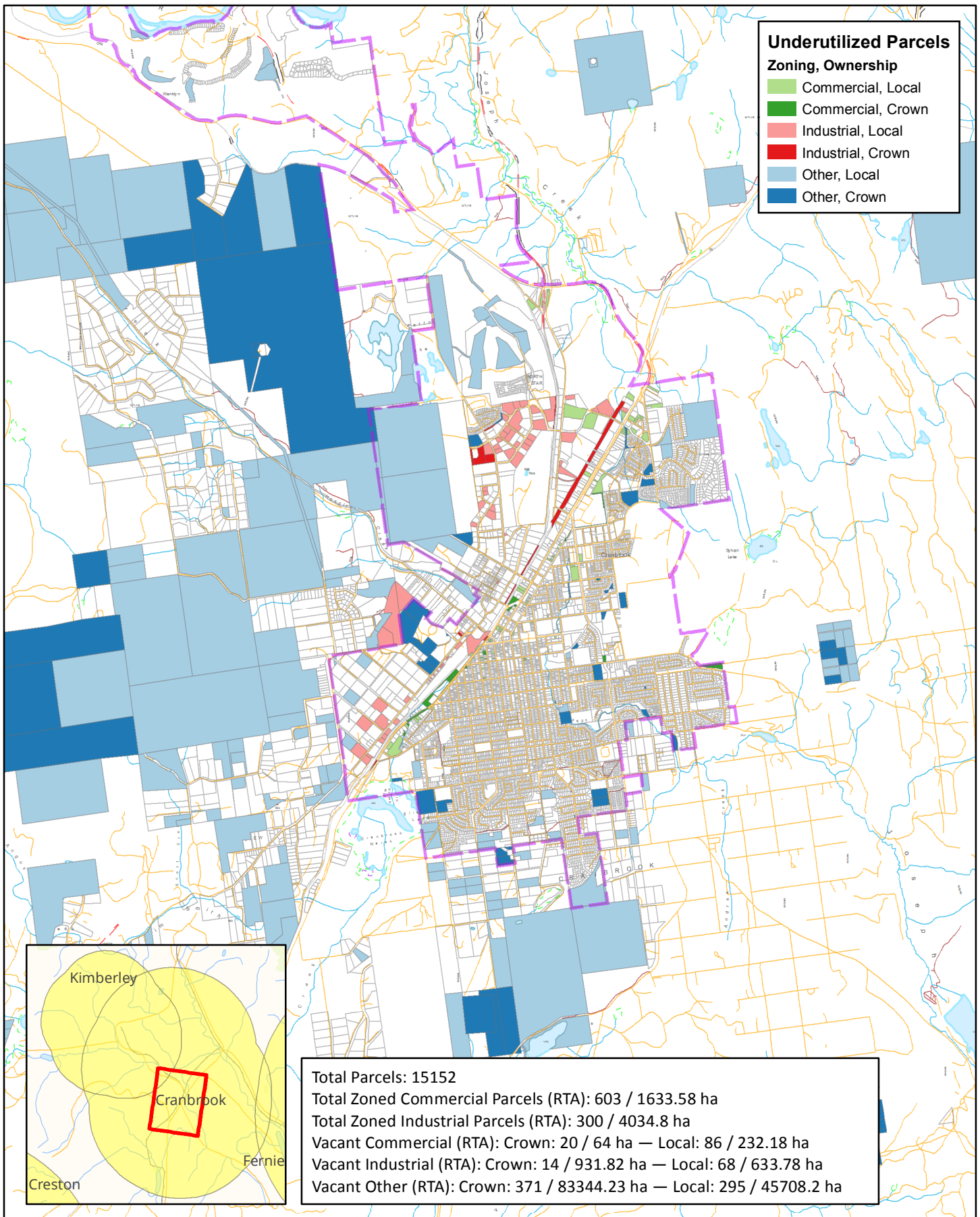
Employment Lands Analysis for Canal Flats



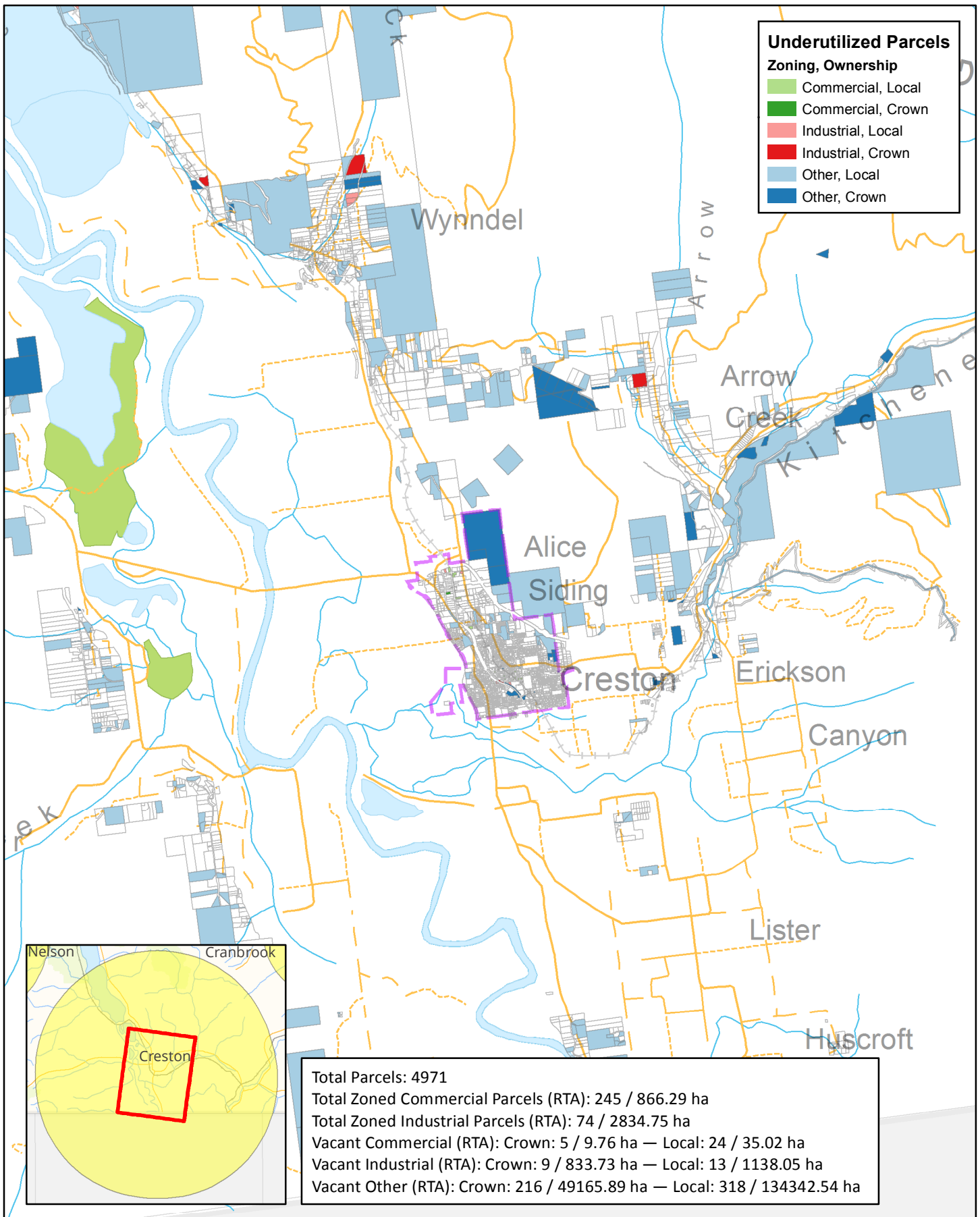
Employment Lands Analysis for Castlegar



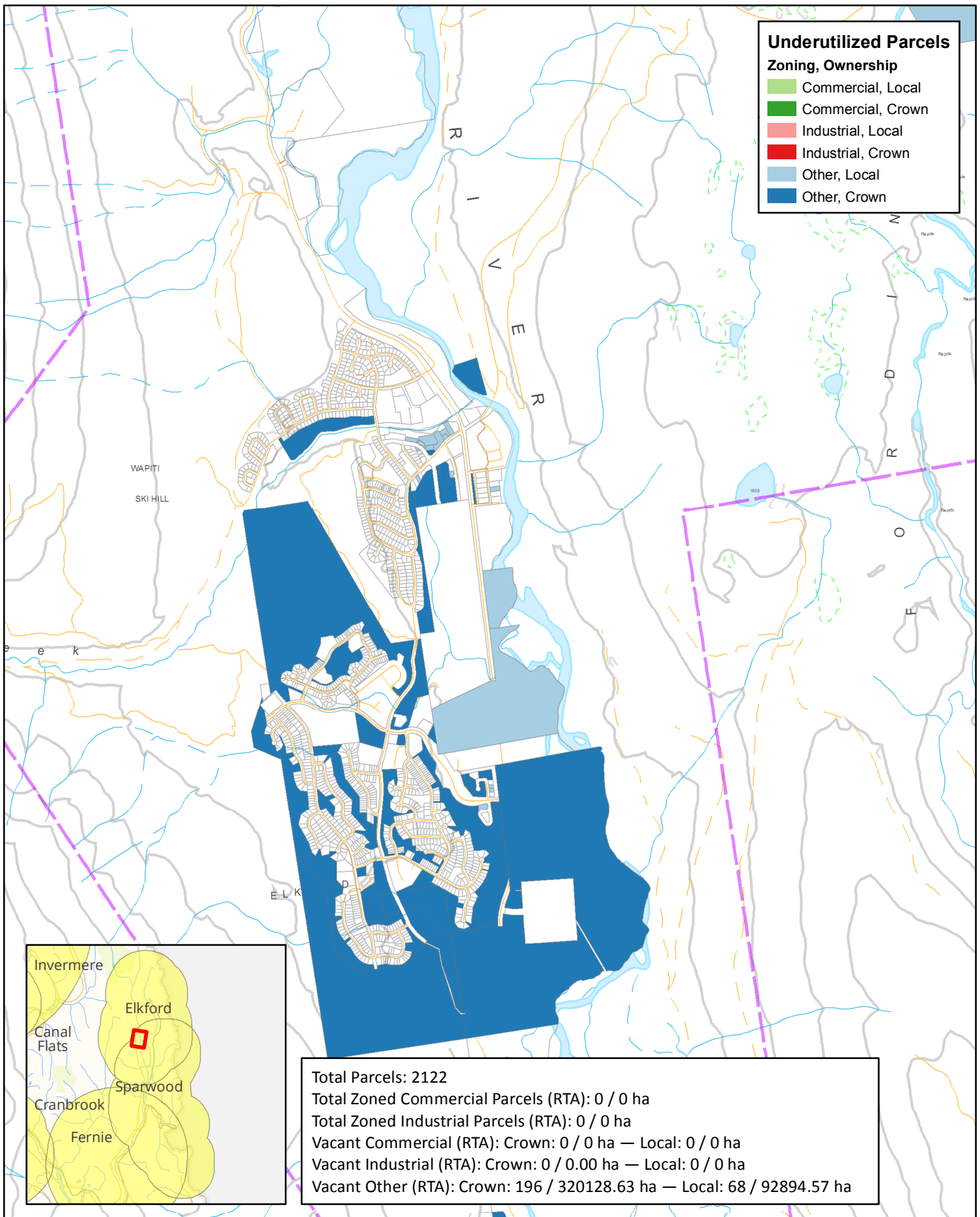
Employment Lands Analysis for Cranbrook



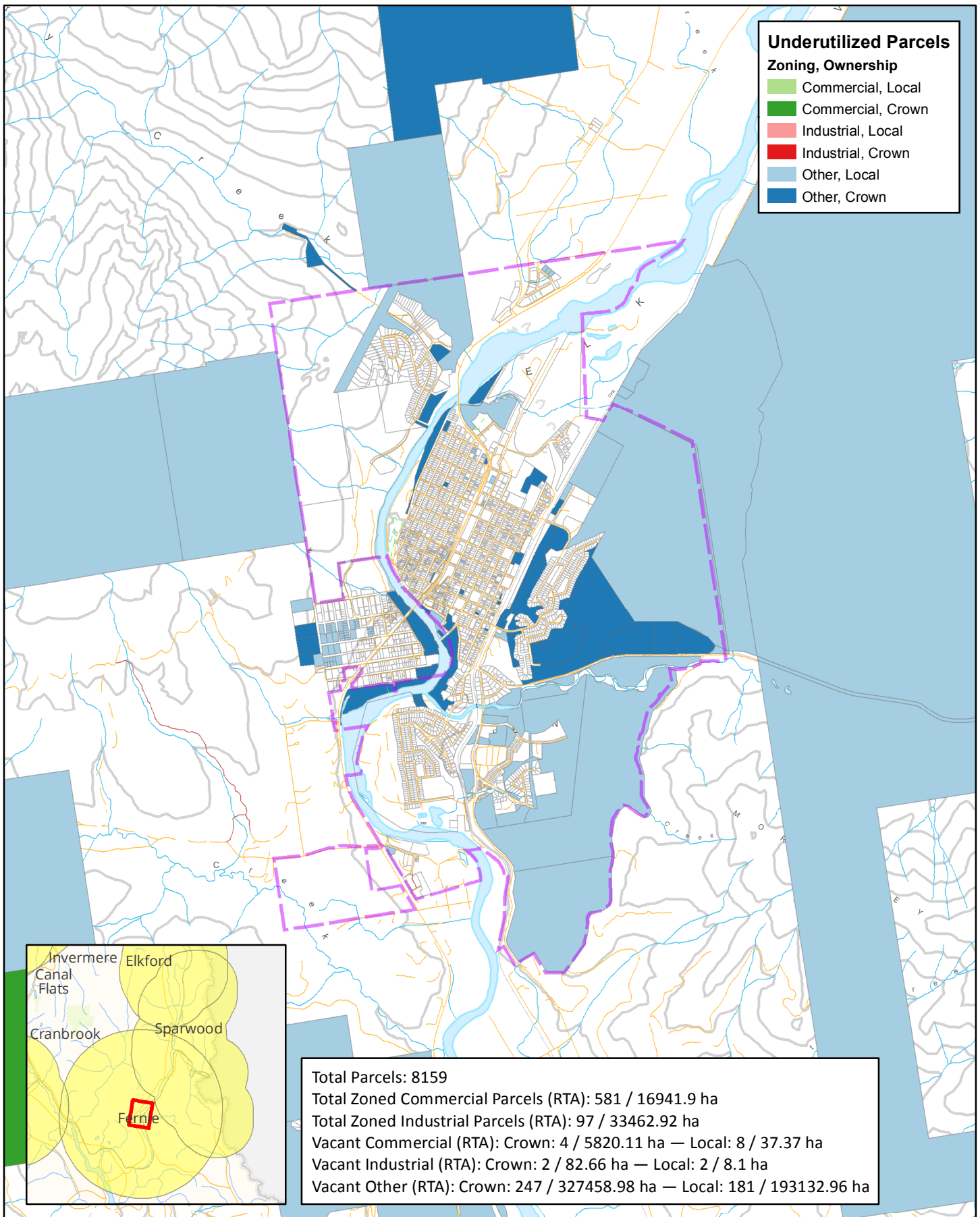
Employment Lands Analysis for Creston



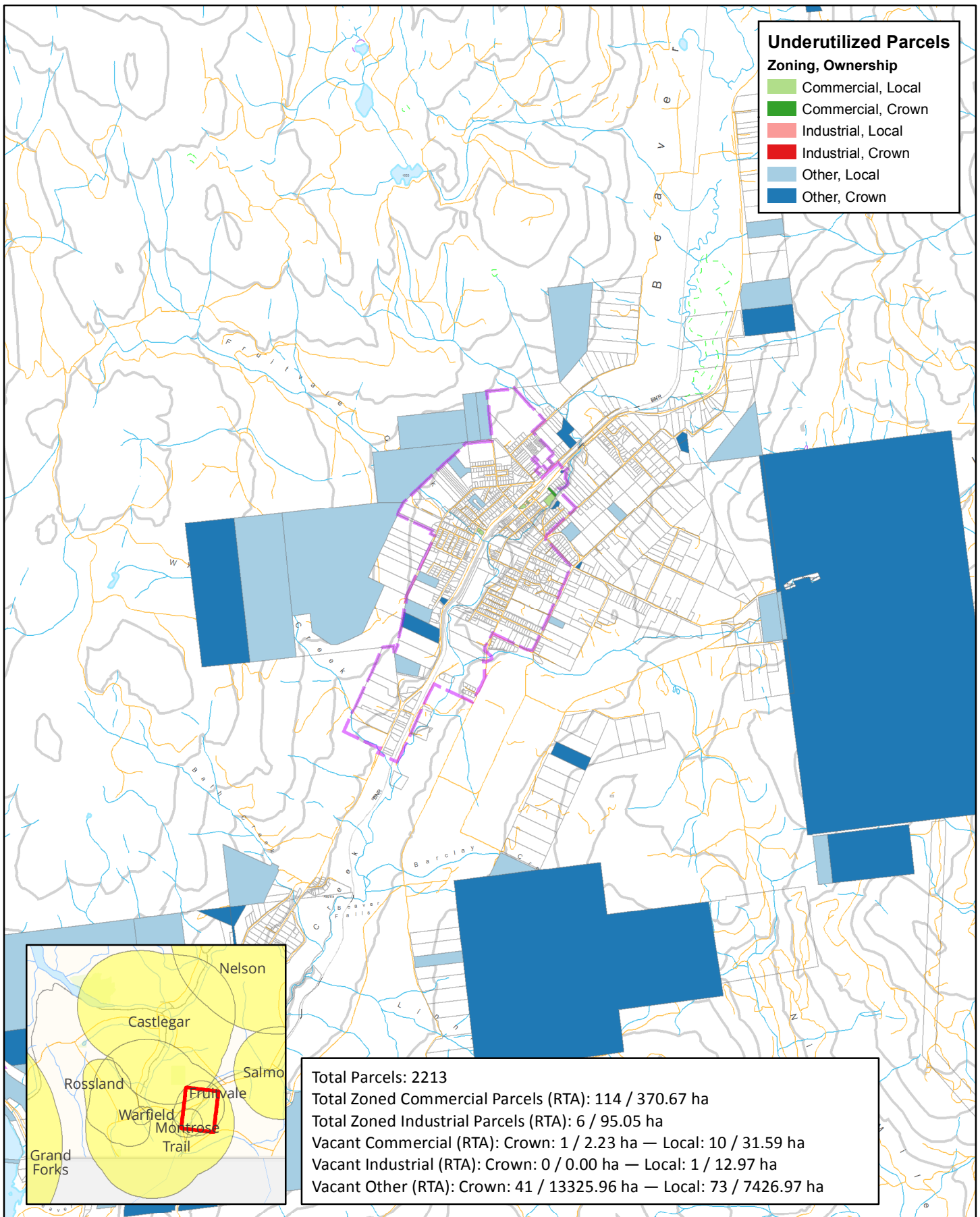
Employment Lands Analysis for Elkford



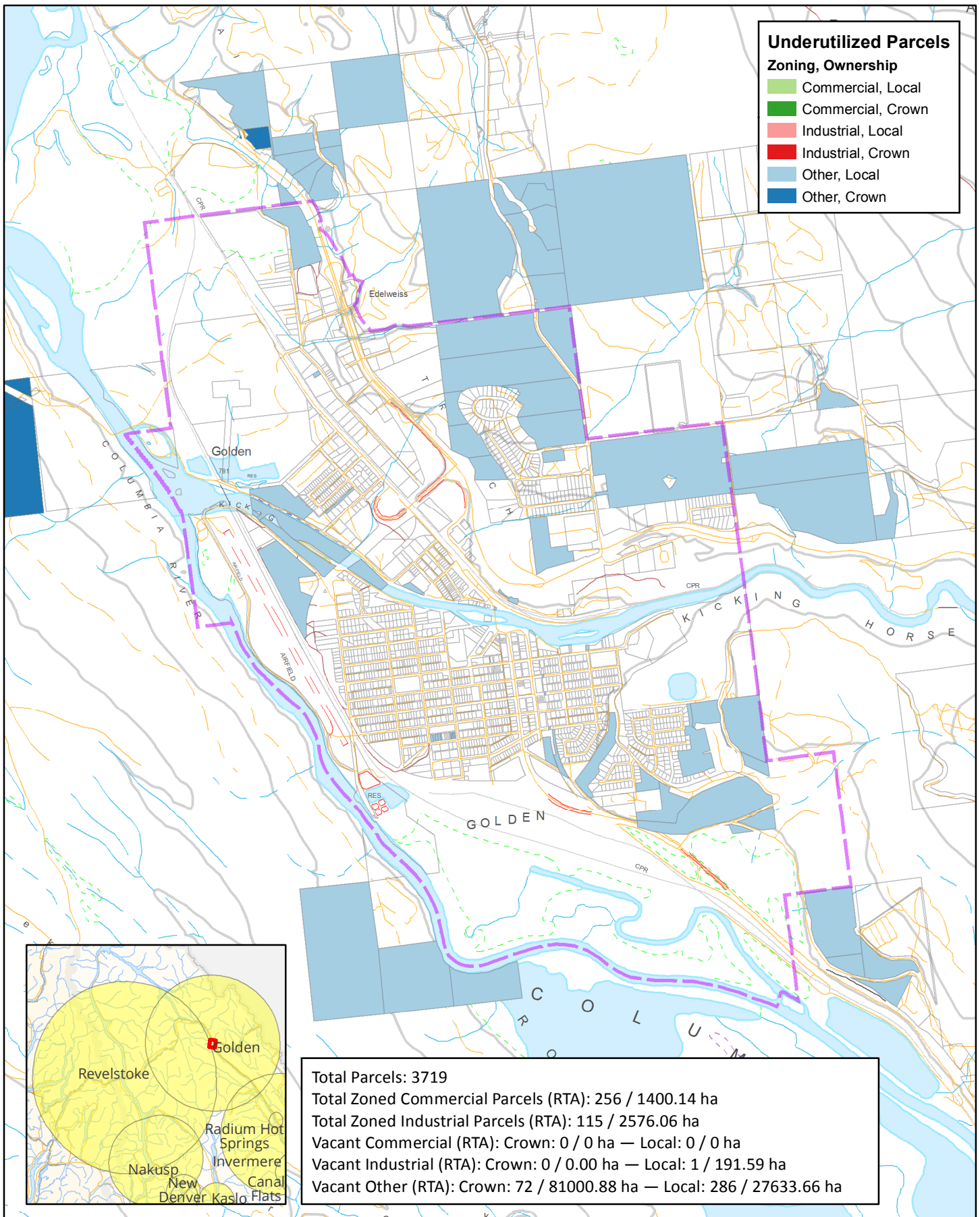
Employment Lands Analysis for Fernie



Employment Lands Analysis for Fruitvale

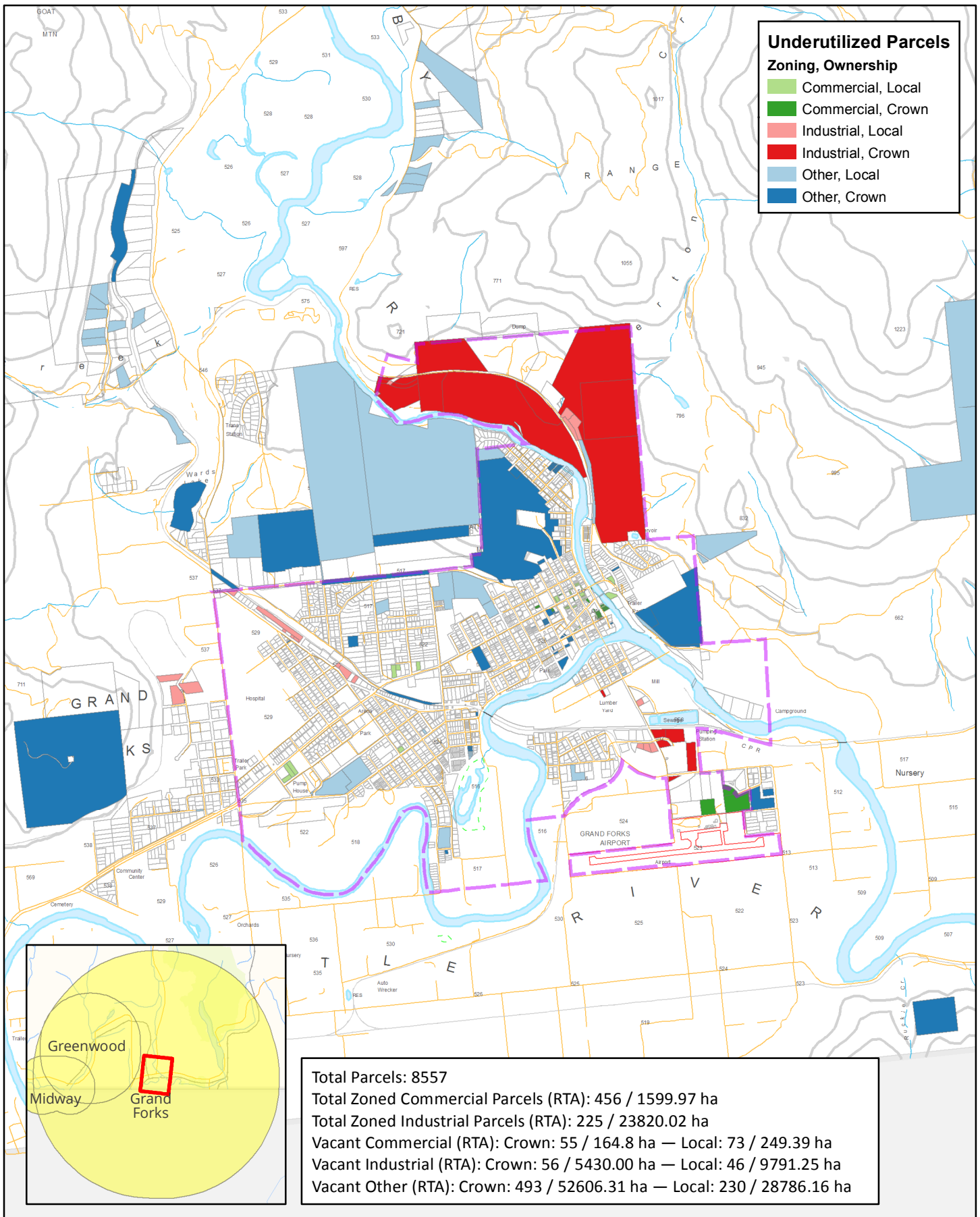


Employment Lands Analysis for Golden

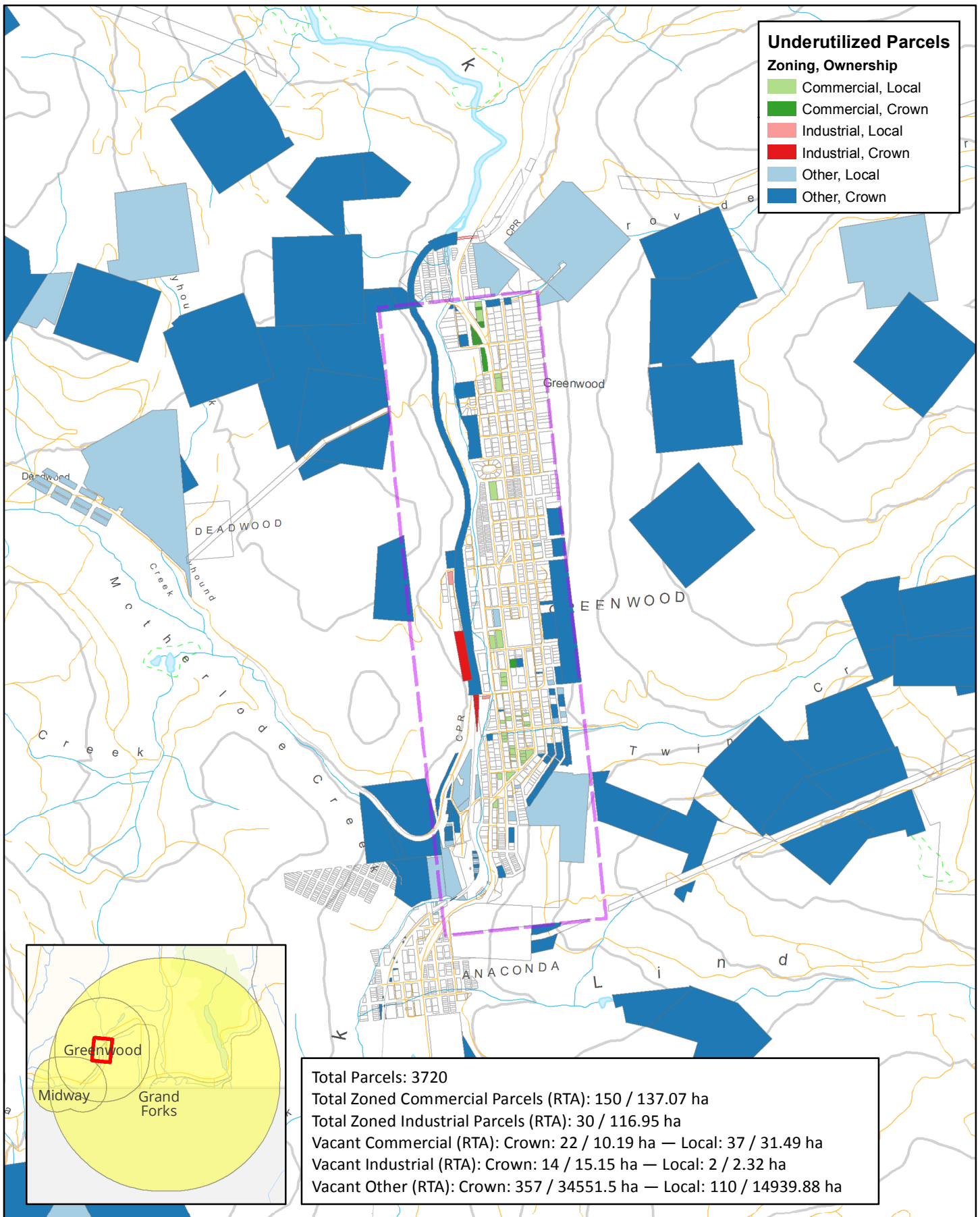


Source: Province of BC, Government of Canada, Local and Regional Governments, RDI, SGRC
 Datum / Projection: NAD 1983 BC Environment Albers
 Scale: 1:30,490

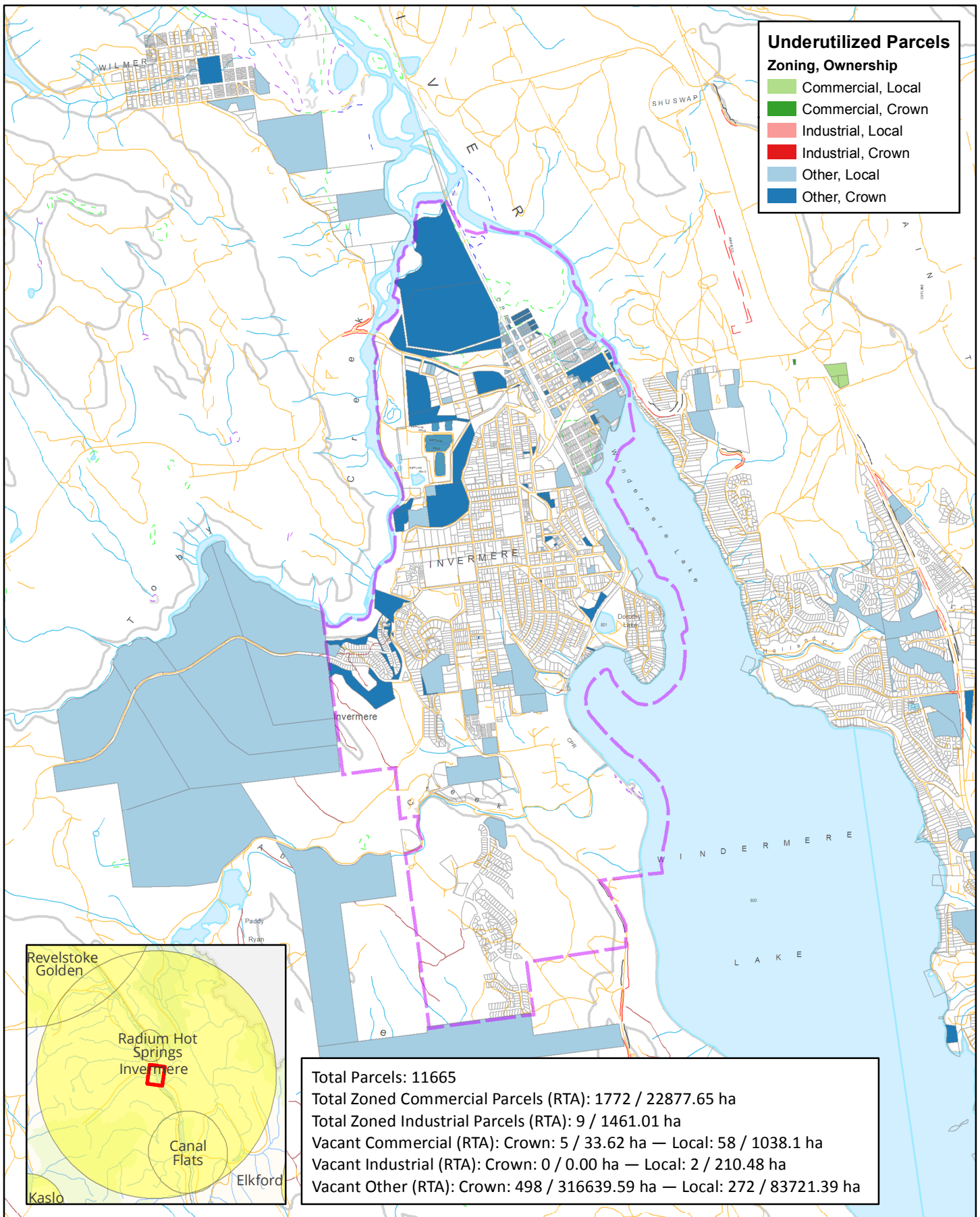
Employment Lands Analysis for Grand Forks



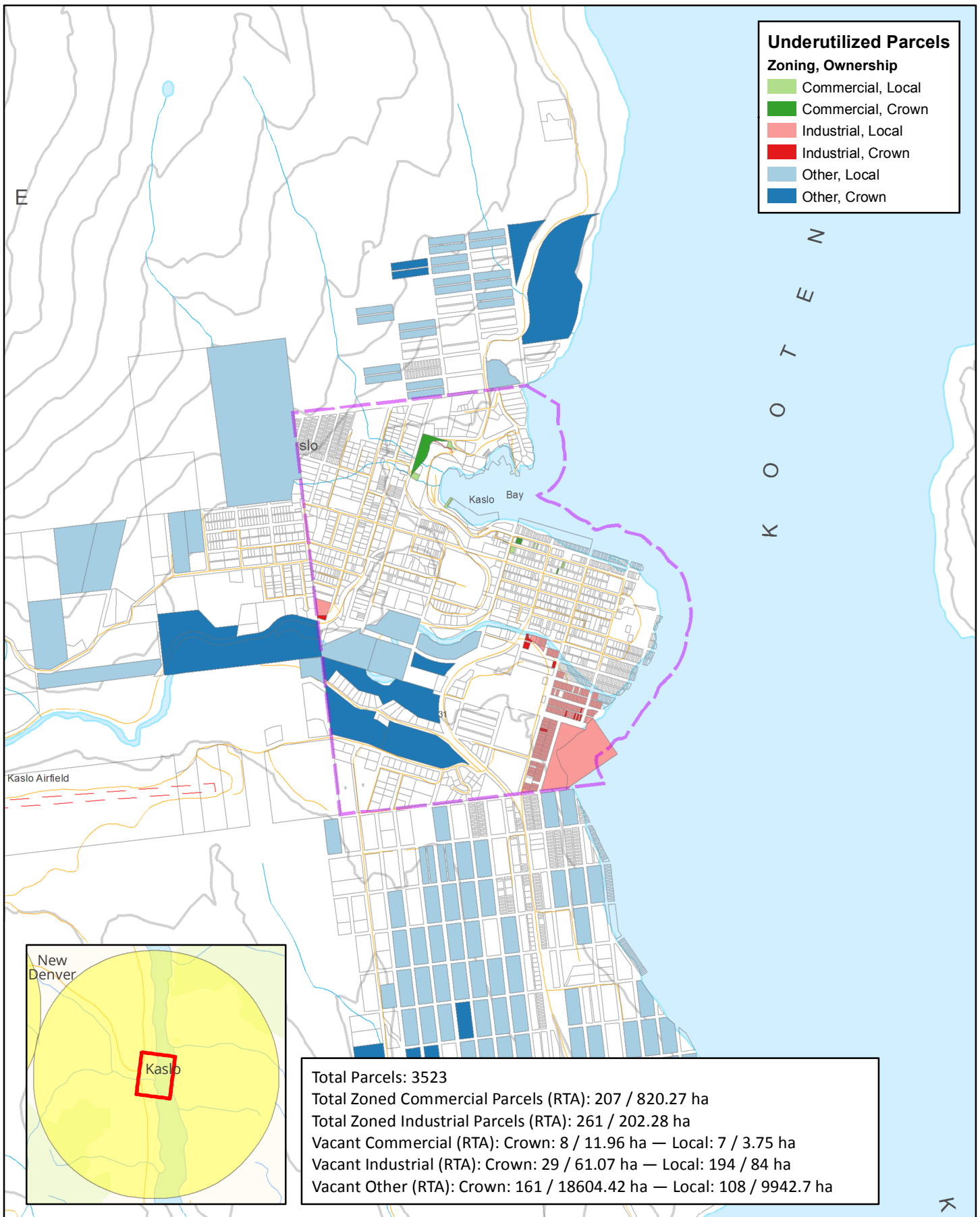
Employment Lands Analysis for Greenwood



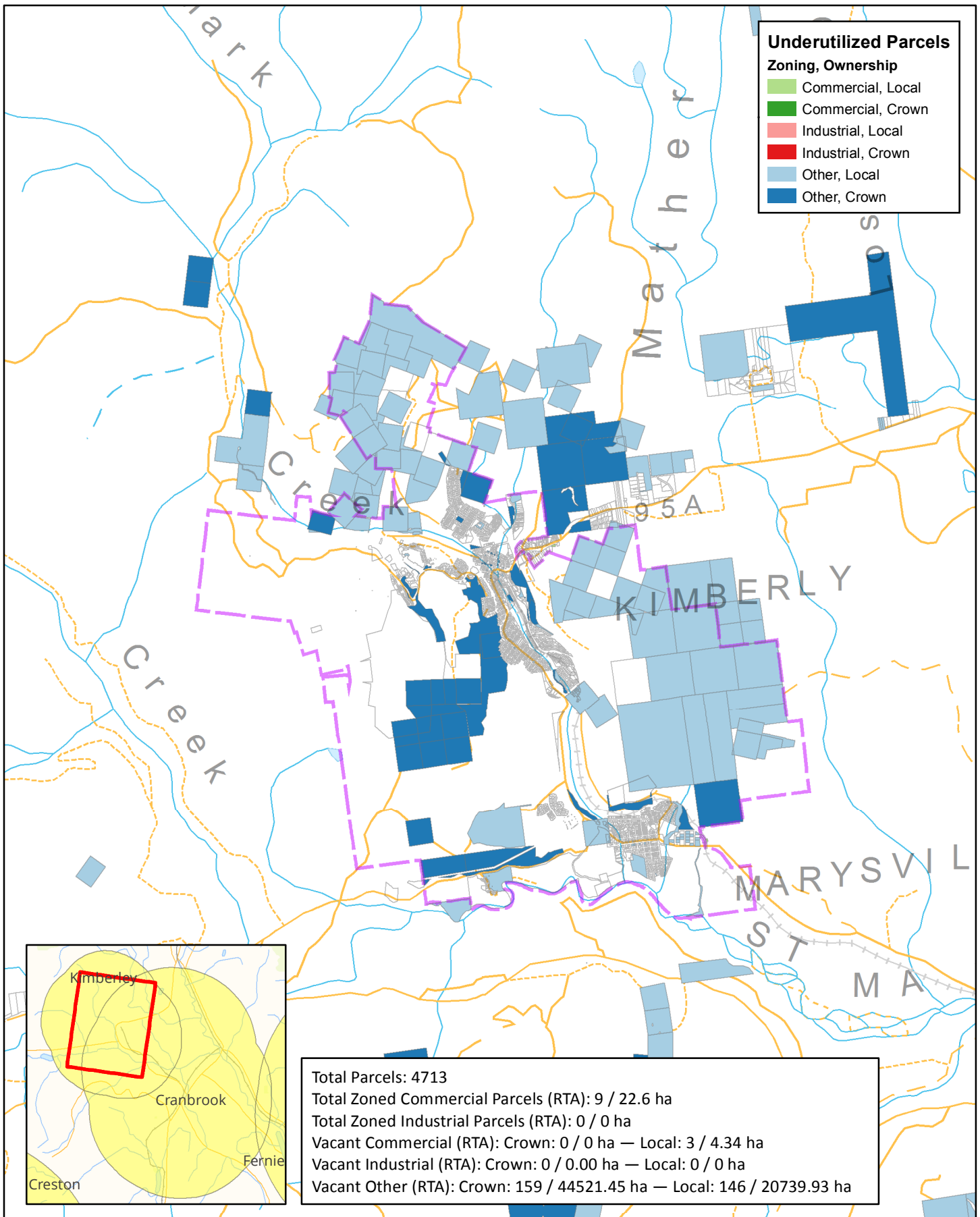
Employment Lands Analysis for Invermere



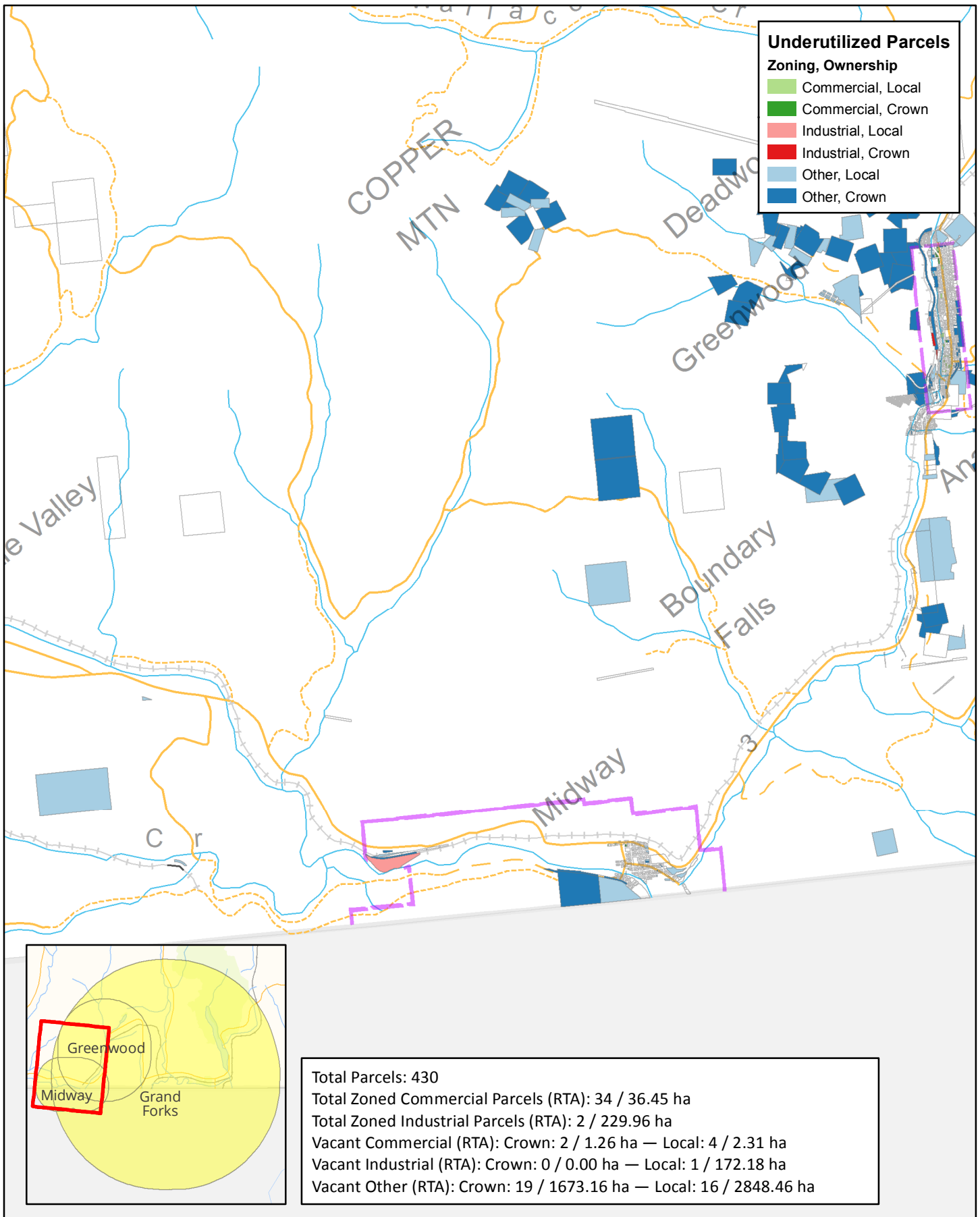
Employment Lands Analysis for Kaslo



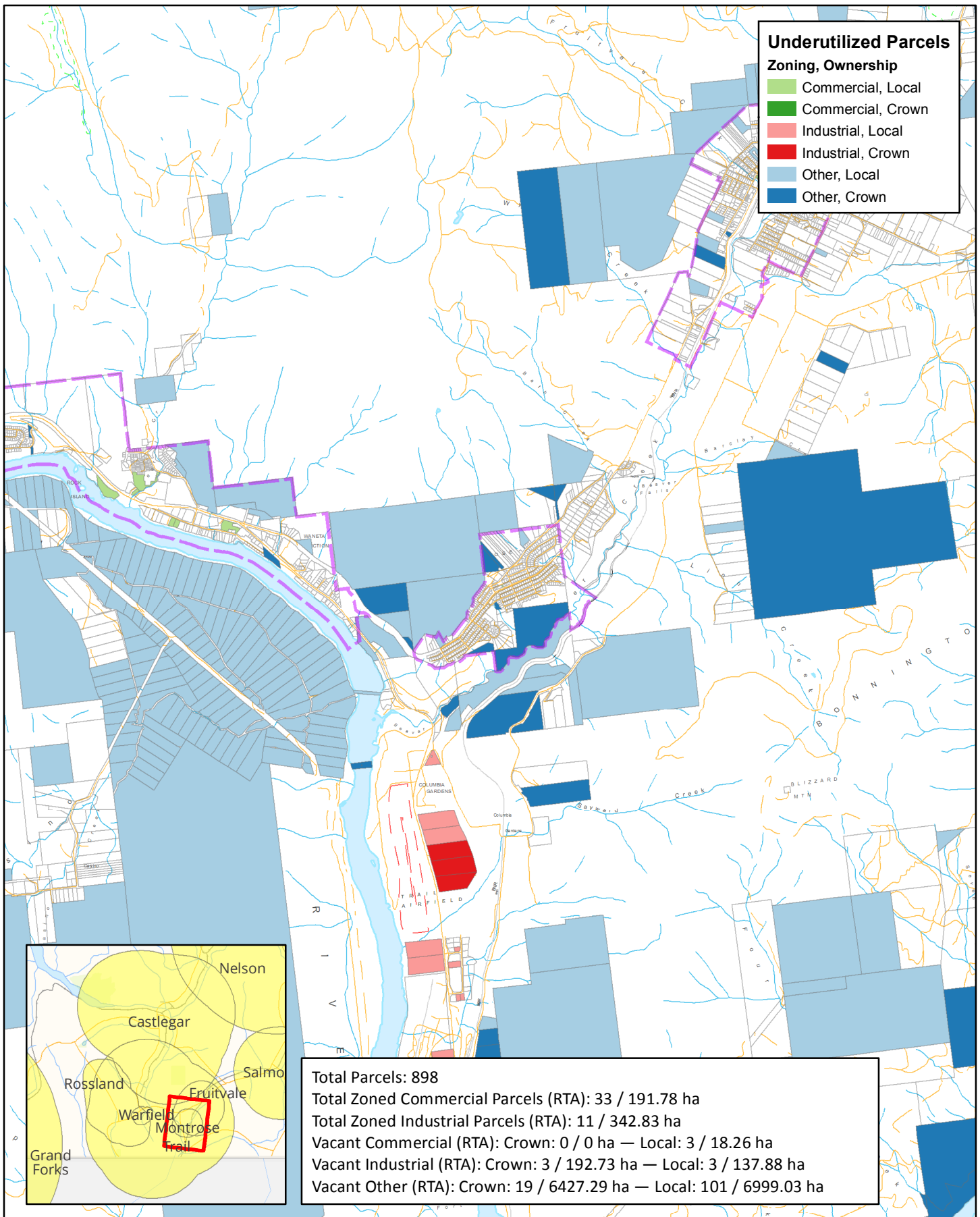
Employment Lands Analysis for Kimberley



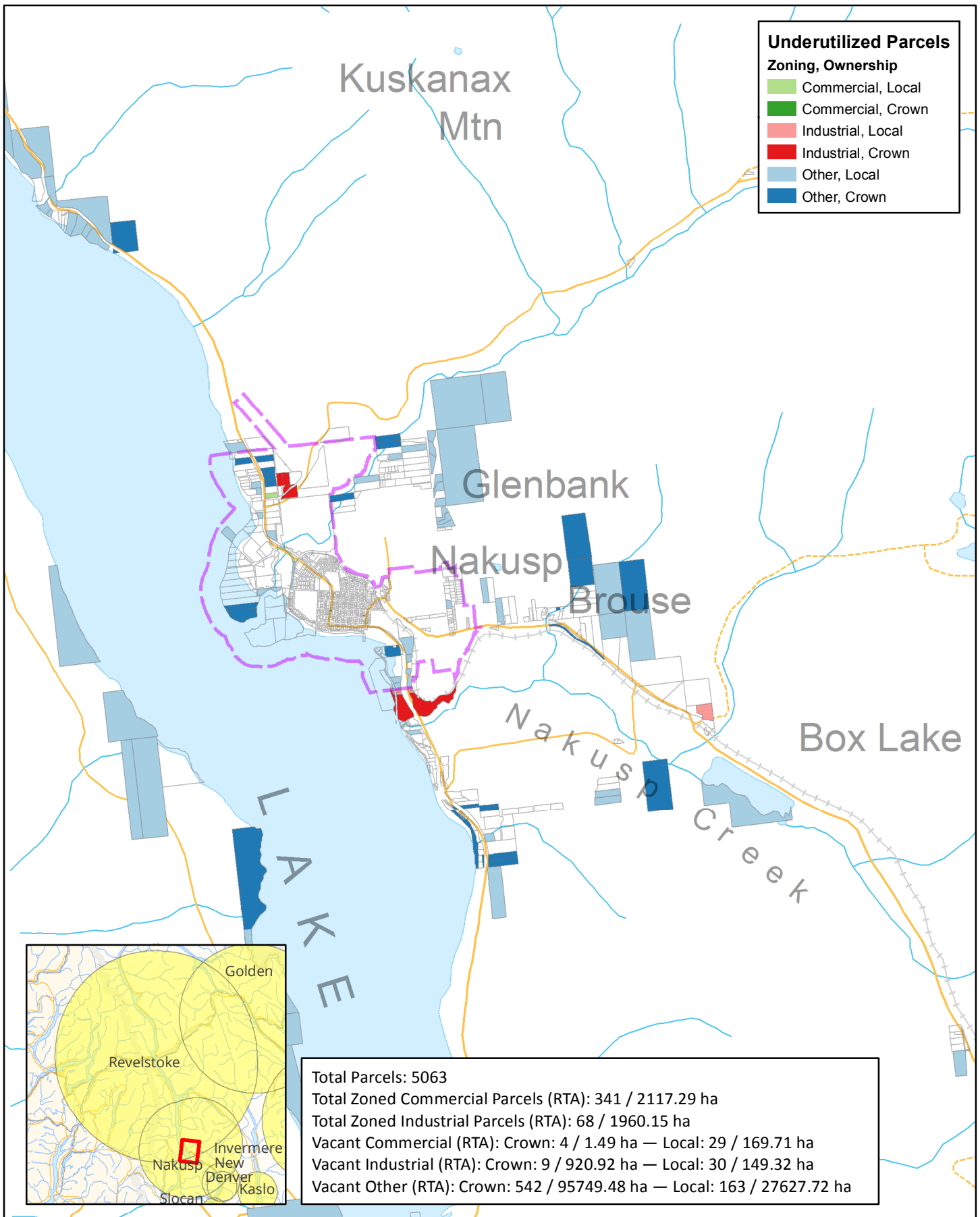
Employment Lands Analysis for Midway



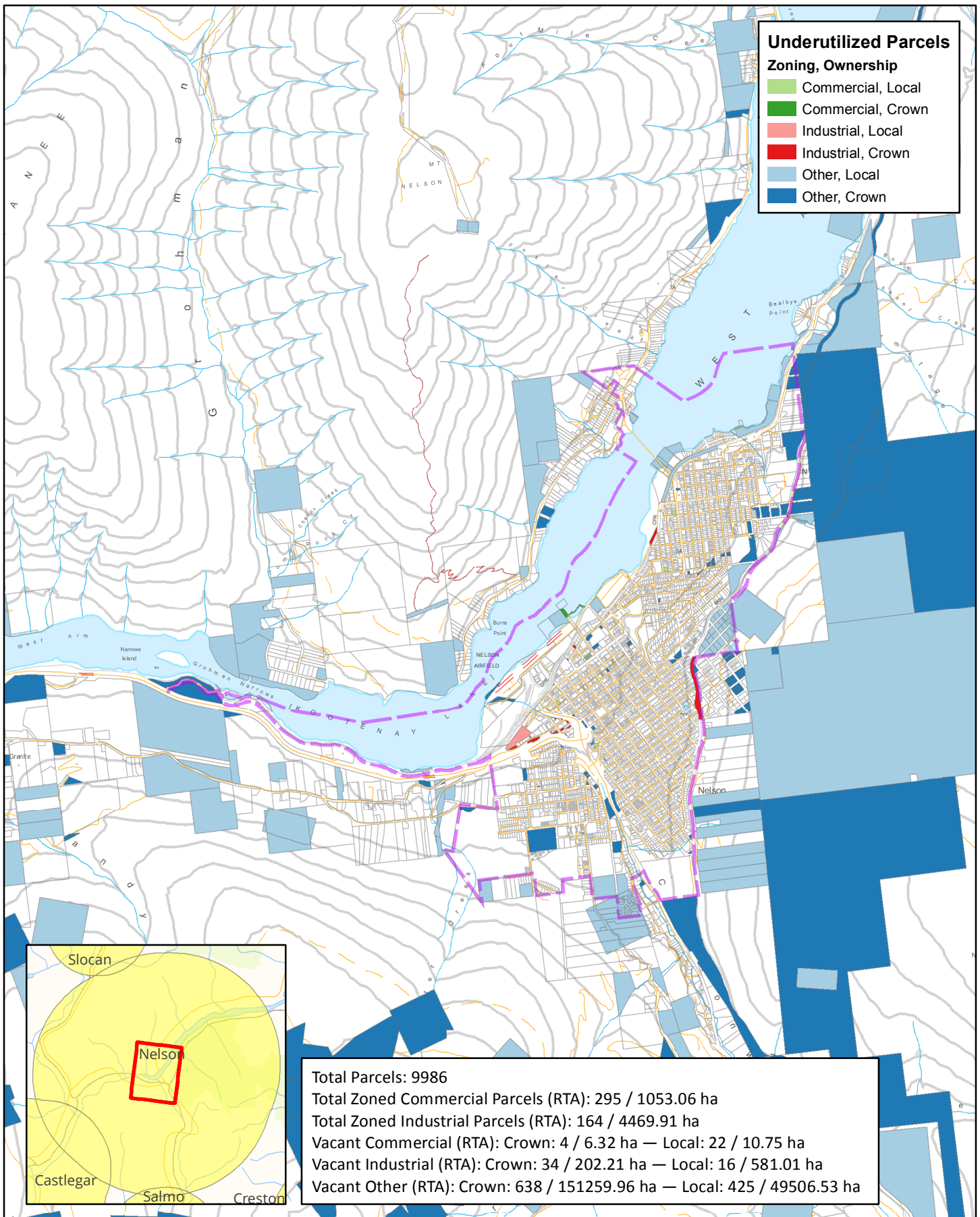
Employment Lands Analysis for Montrose



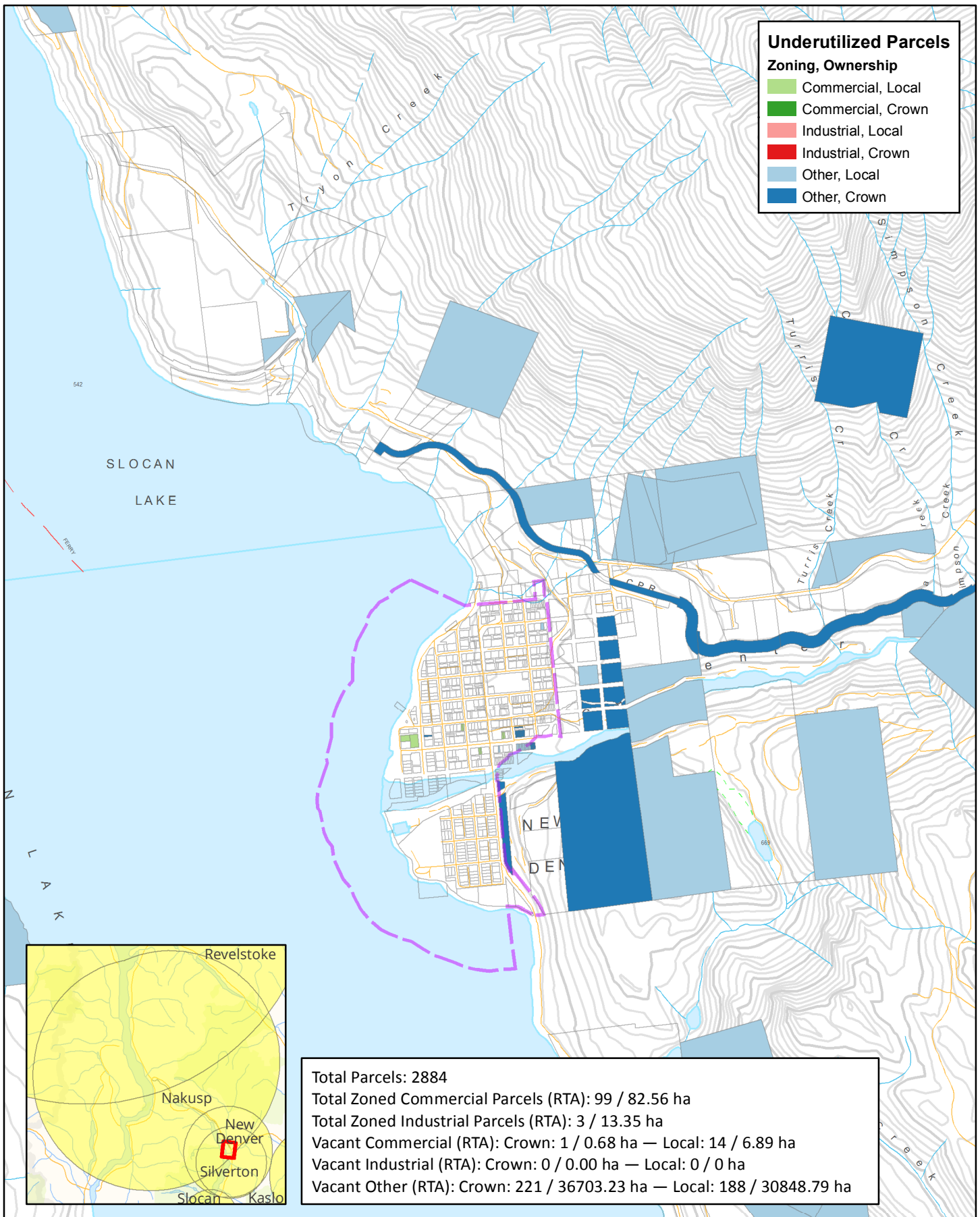
Employment Lands Analysis for Nakusp



Employment Lands Analysis for Nelson

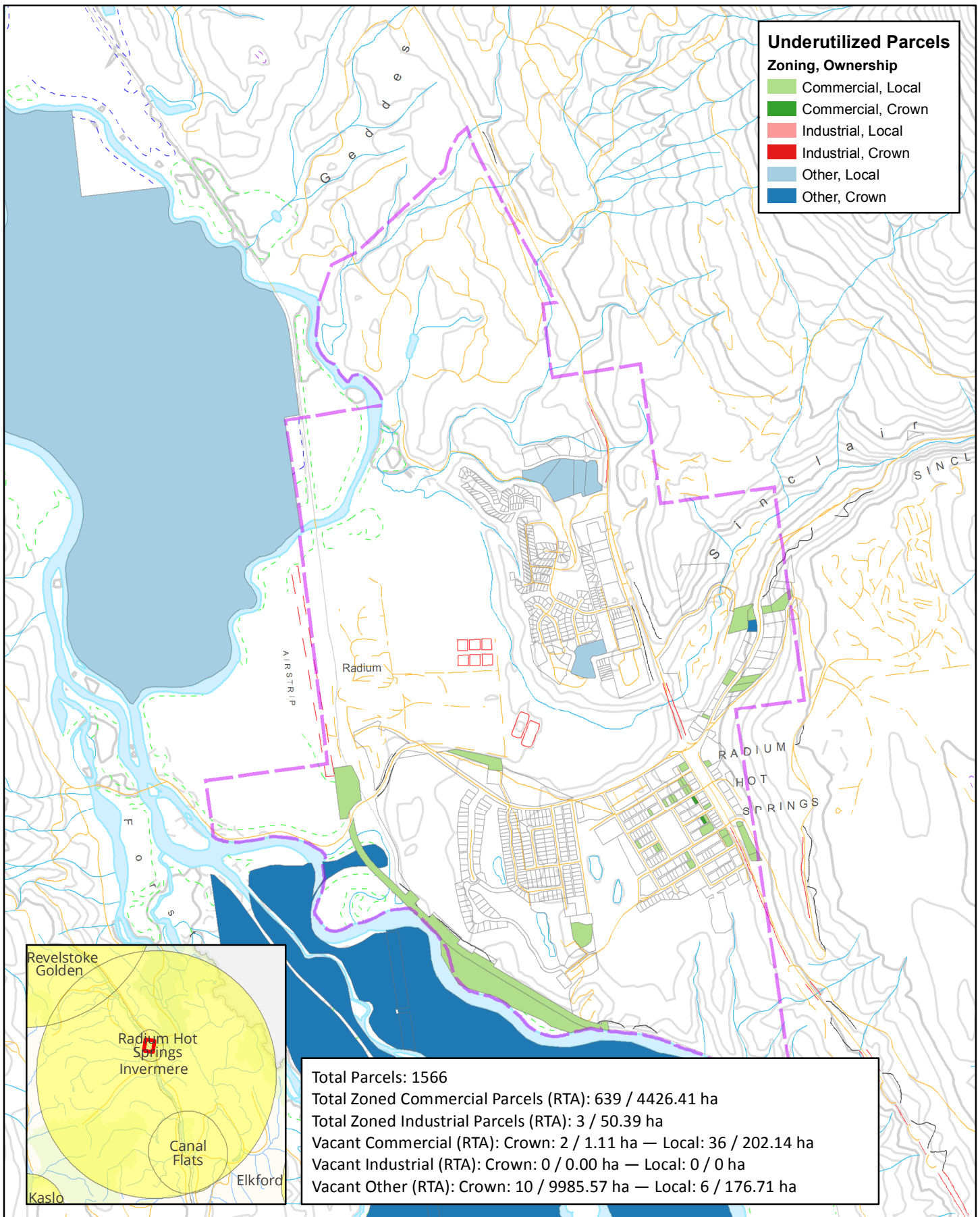


Employment Lands Analysis for New Denver

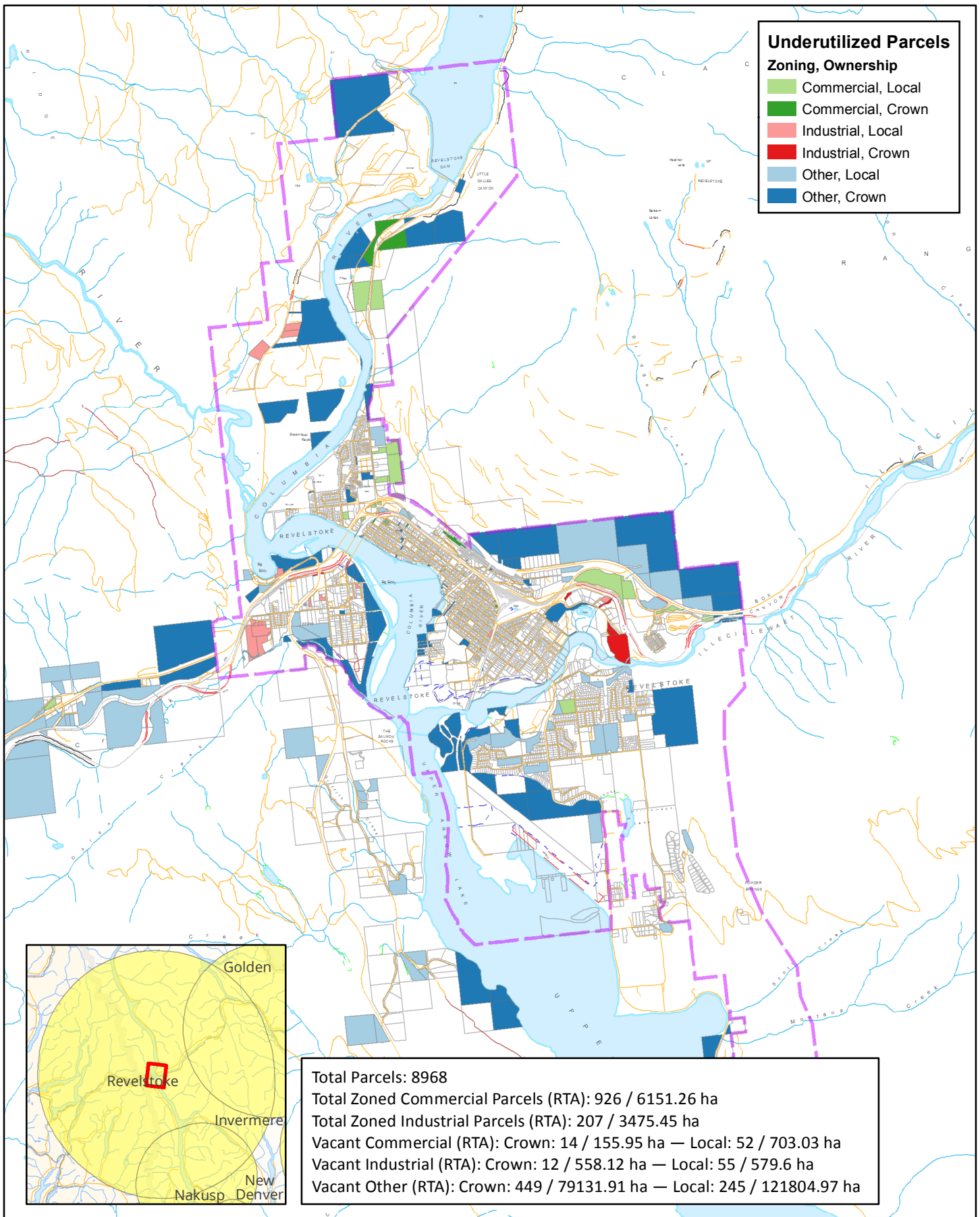


Source: Province of BC, Government of Canada, Local and Regional Governments, RDI, SGRC
 Datum / Projection: NAD 1983 BC Environment Albers
 Scale: 1:24,750

Employment Lands Analysis for Radium Hot Springs

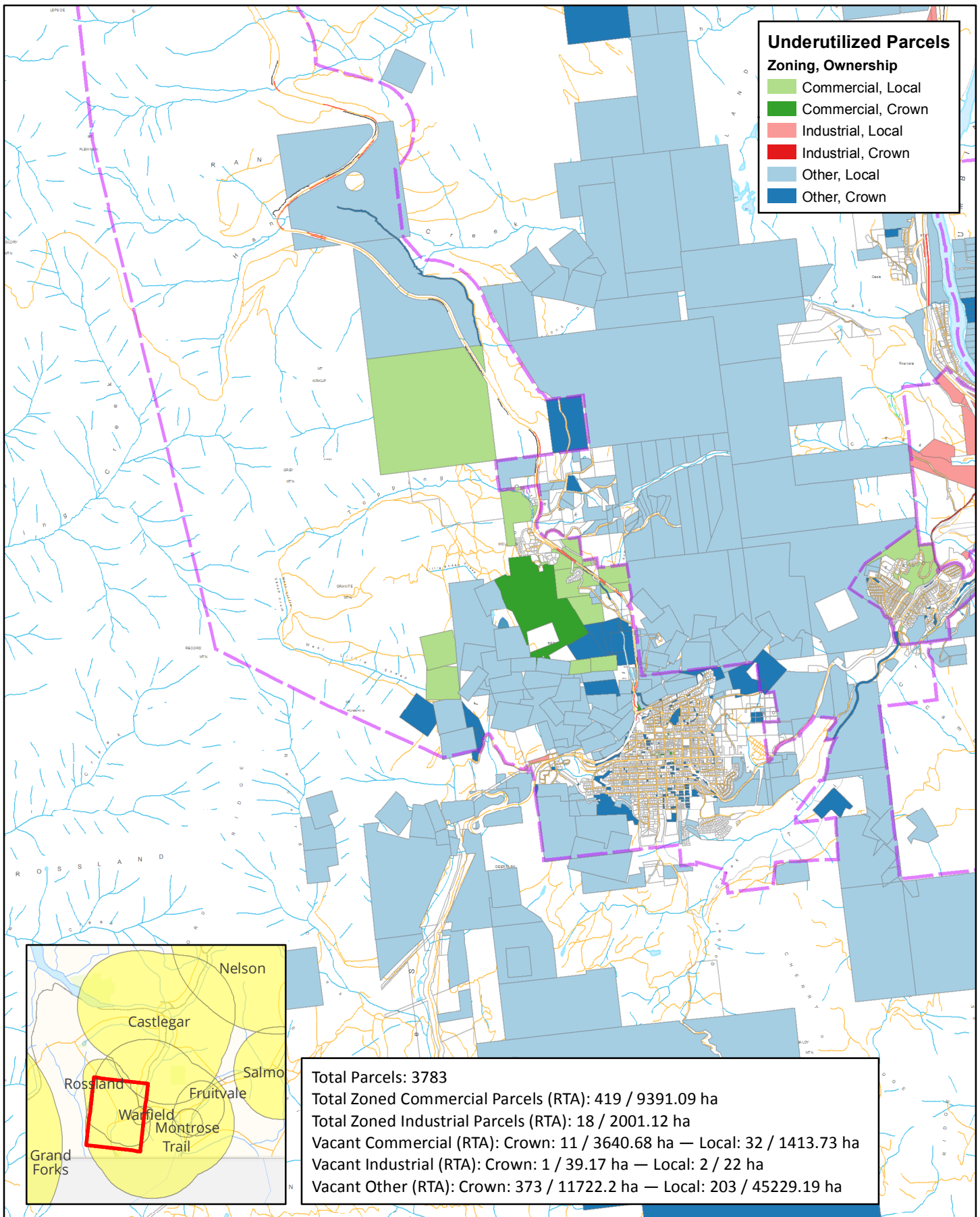


Employment Lands Analysis for Revelstoke

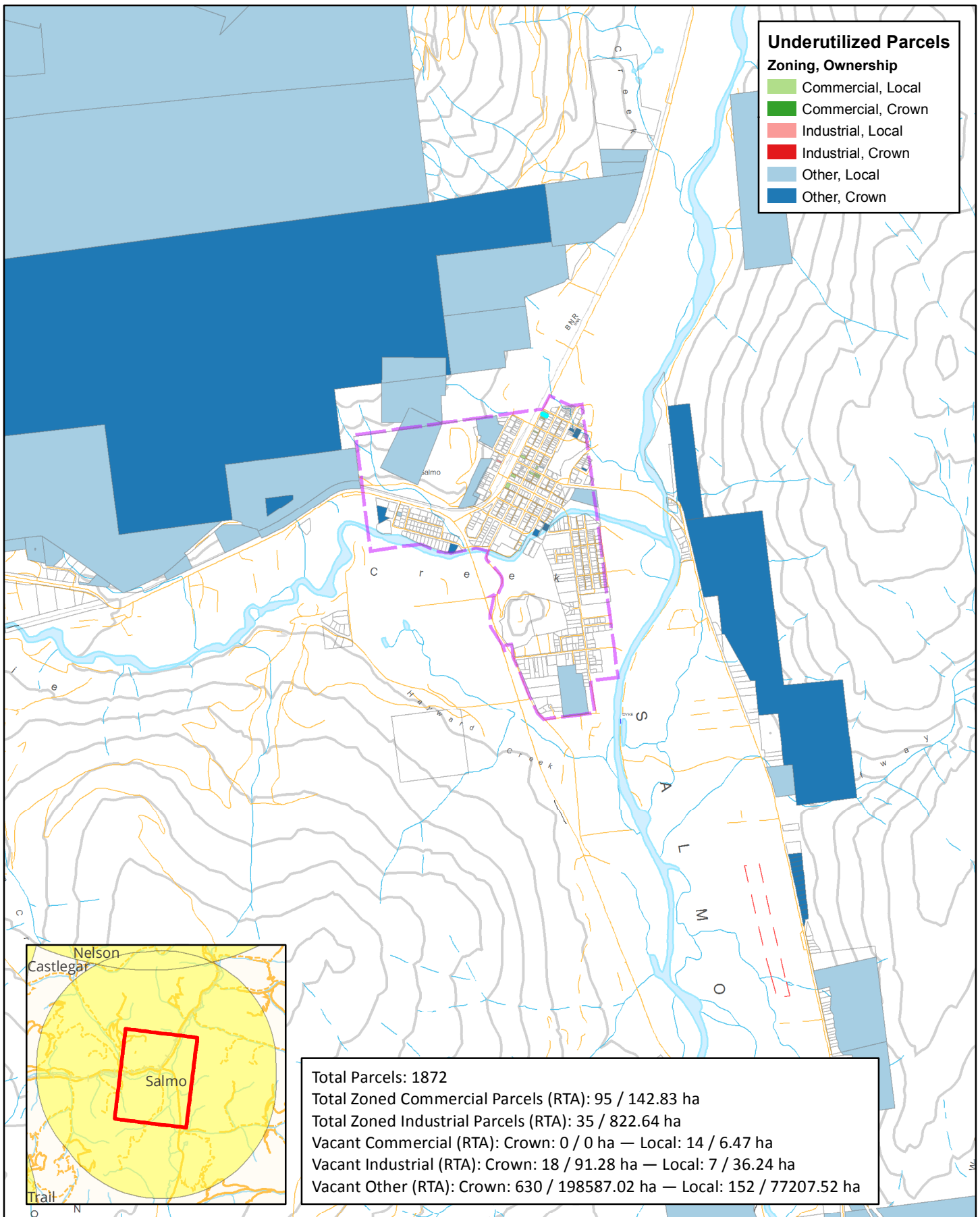


Source: Province of BC, Government of Canada, Local and Regional Governments, RDI, SGRC
 Datum / Projection: NAD 1983 BC Environment Albers
 Scale: 1:70,880

Employment Lands Analysis for Rossland

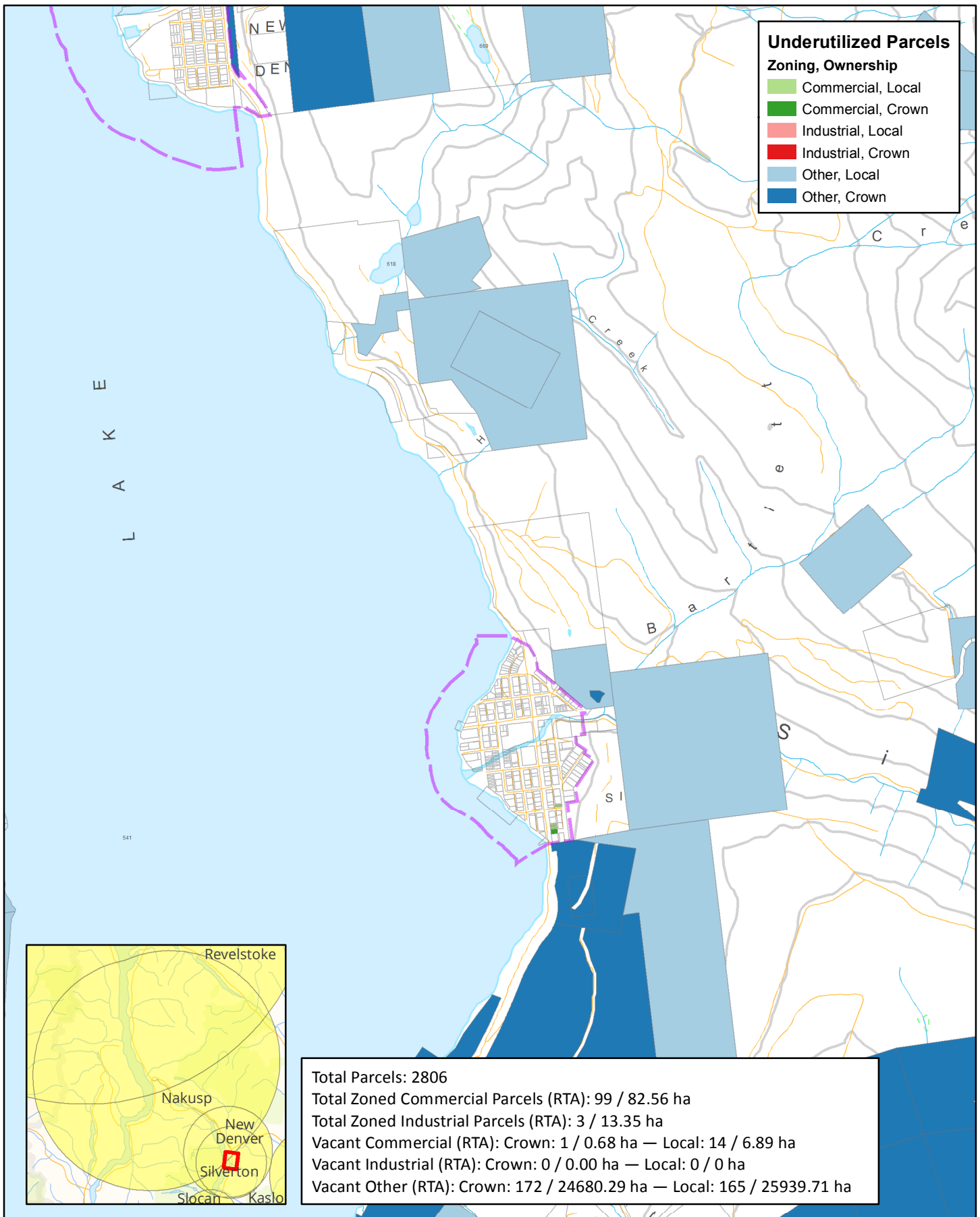


Employment Lands Analysis for Salmo



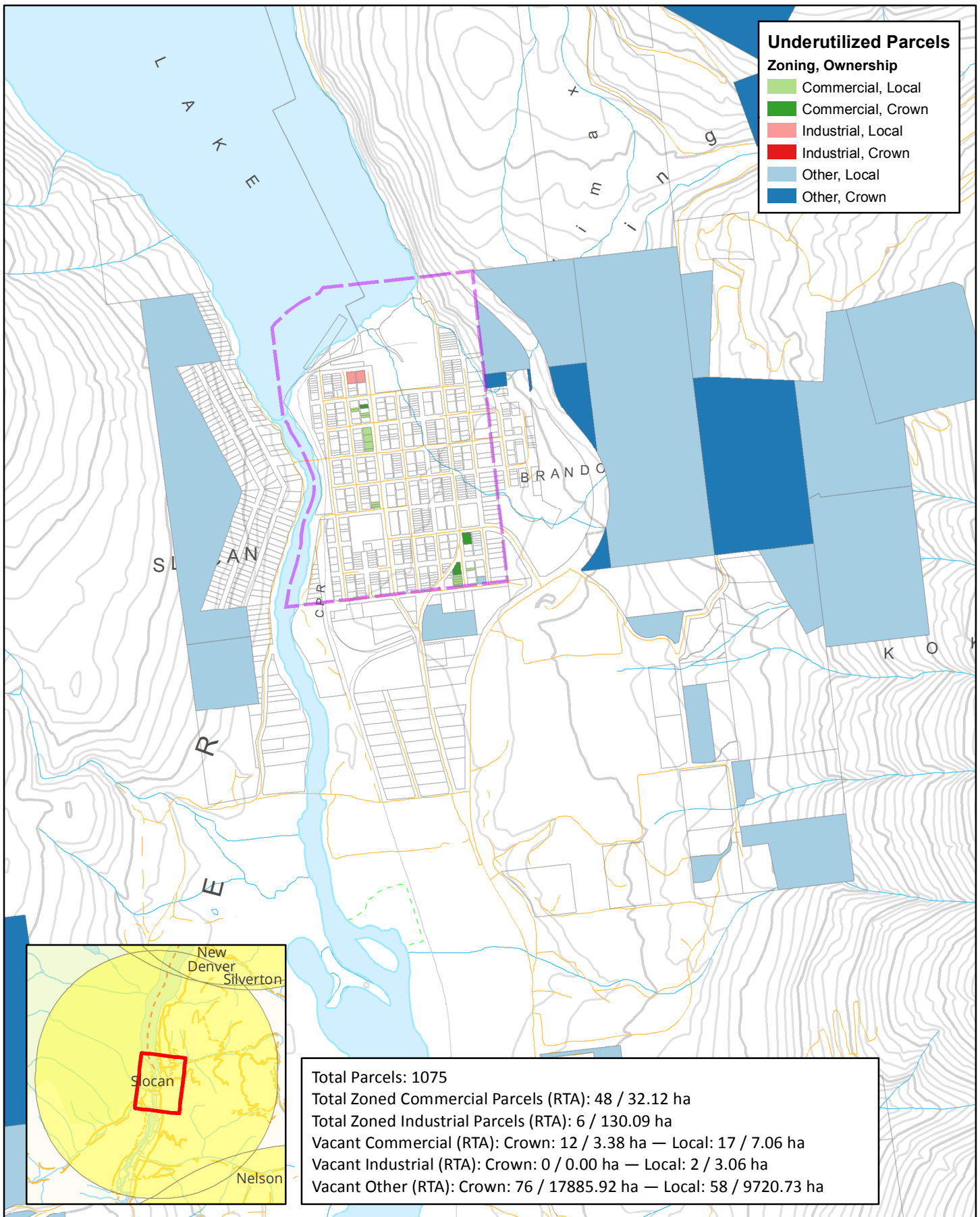
Source: Province of BC, Government of Canada, Local and Regional Governments, RDI, SGRC
 Datum / Projection: NAD 1983 BC Environment Albers
 Scale: 1:35,020

Employment Lands Analysis for Silverton

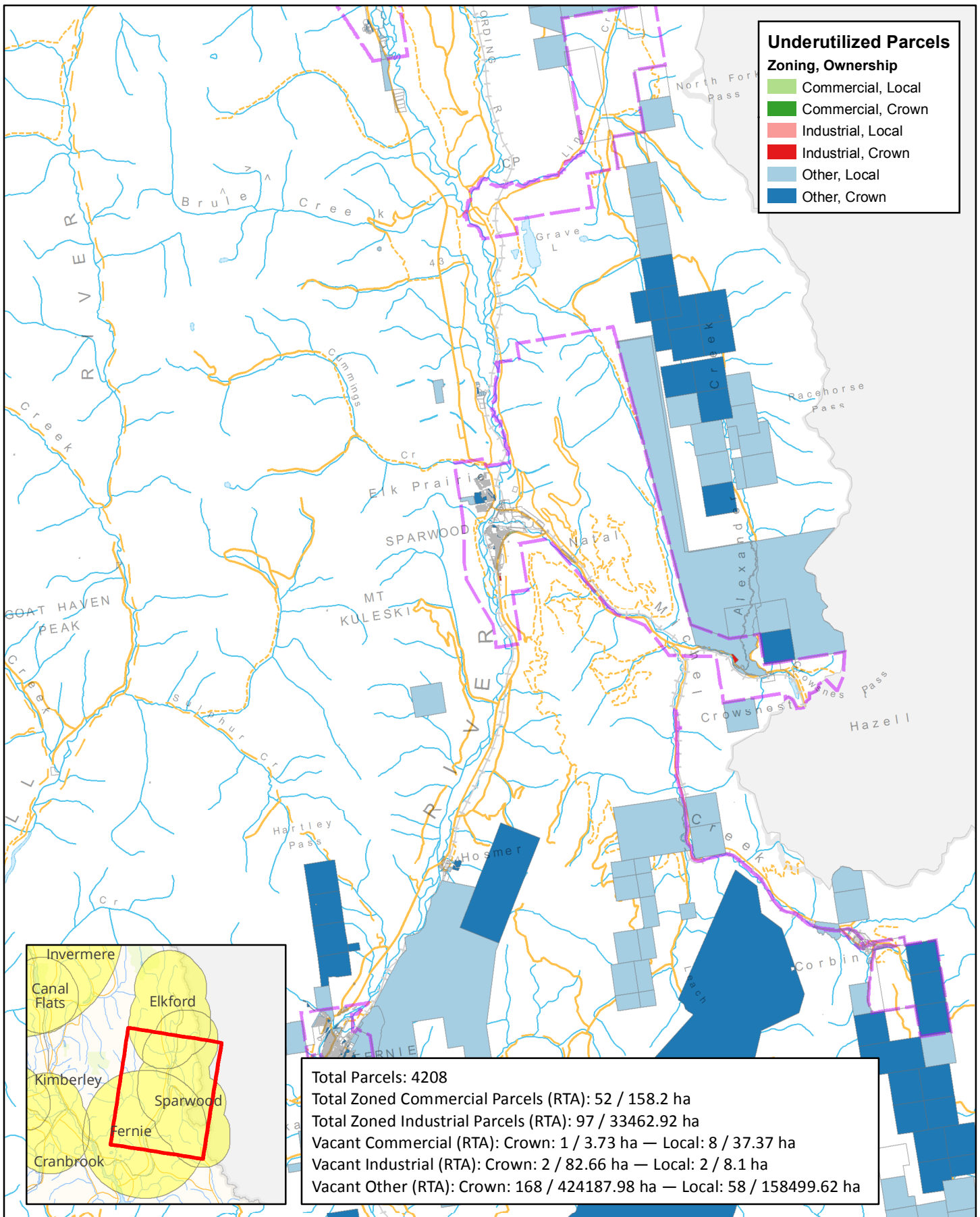


Source: Province of BC, Government of Canada, Local and Regional Governments, RDI, SGRC
 Datum / Projection: NAD 1983 BC Environment Albers
 Scale: 1:25,650

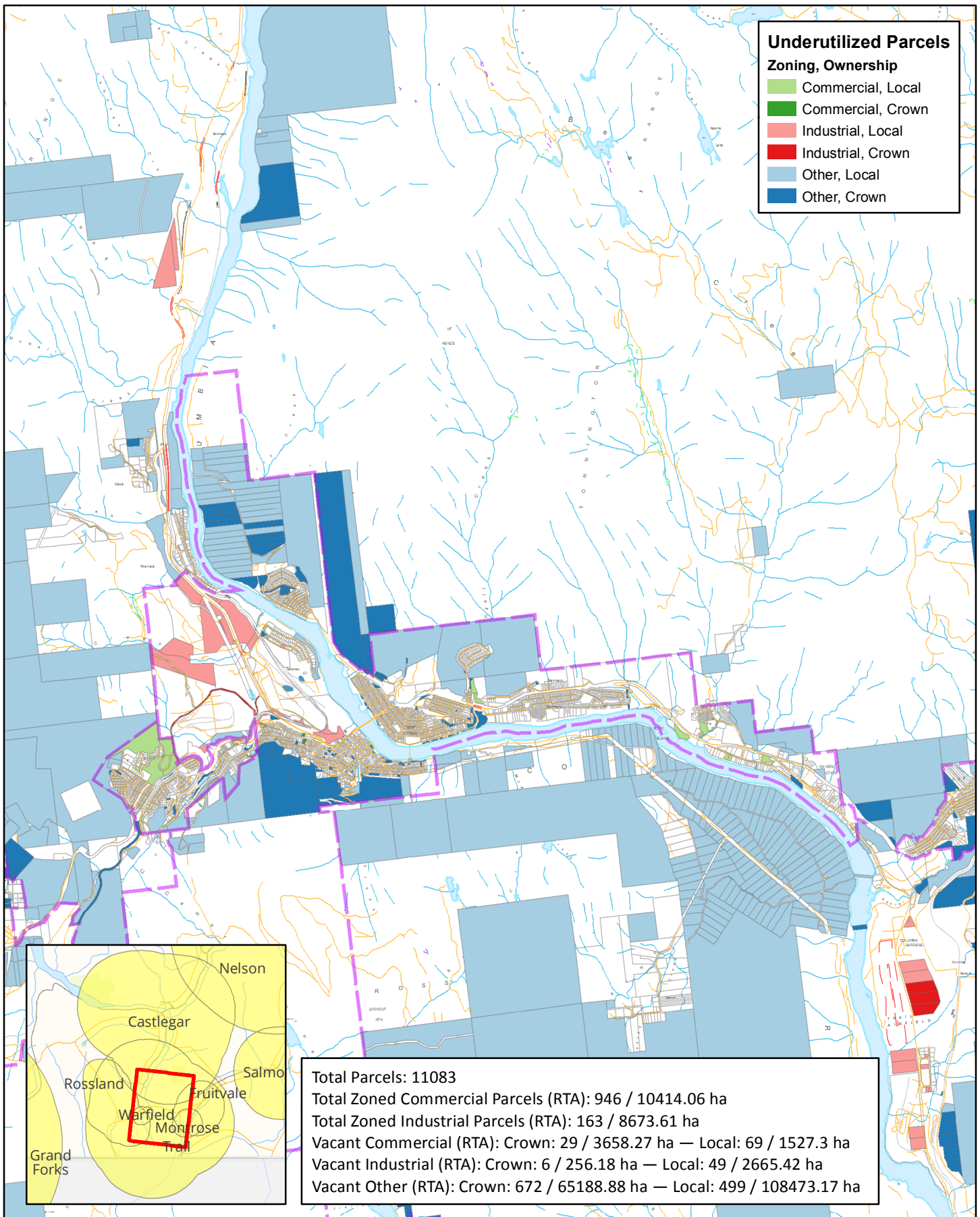
Employment Lands Analysis for Slocan



Employment Lands Analysis for Sparwood

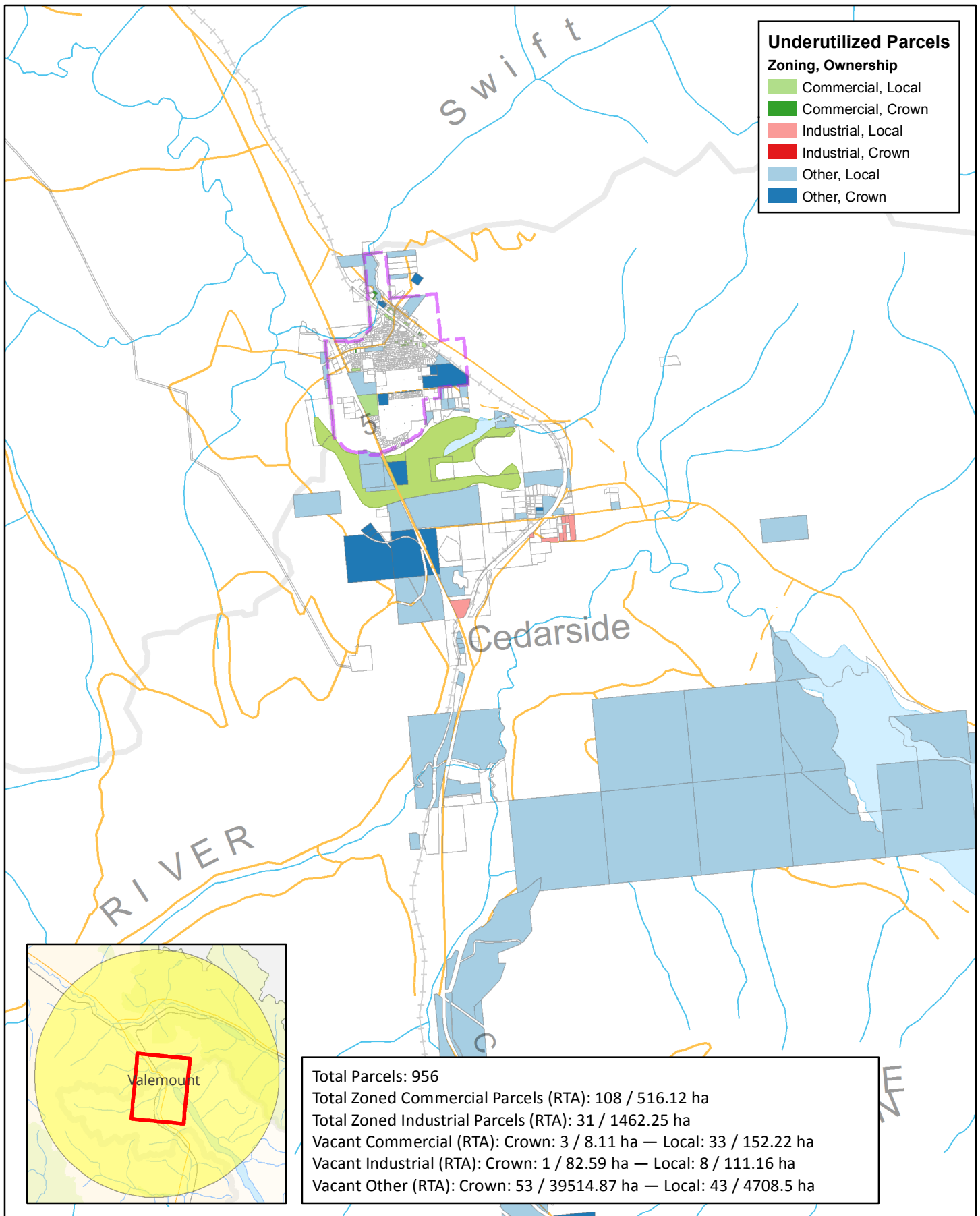


Employment Lands Analysis for Trail



Source: Province of BC, Government of Canada, Local and Regional Governments, RDI, SGRC
 Datum / Projection: NAD 1983 BC Environment Albers
 Scale: 1:74,180

Employment Lands Analysis for Valemount



Employment Lands Analysis for Warfield

