



# **SIBAC Innovative Solutions for Rural Housing & Seniors Services Project**

## **Project Updates**

**SIBAC Board Meeting – Feb 24<sup>th</sup> 2015**

**RDOS: Donna Butler–April 13 2015**

**SVPS at the Grist Mill- April 15<sup>th</sup> 2015**

**Princeton Town Council – May 4<sup>th</sup> 2015**

**Keremeos Town Council – June 15<sup>th</sup> 2015**

**Regional District Okanagan Similkameen – June 18<sup>th</sup>**

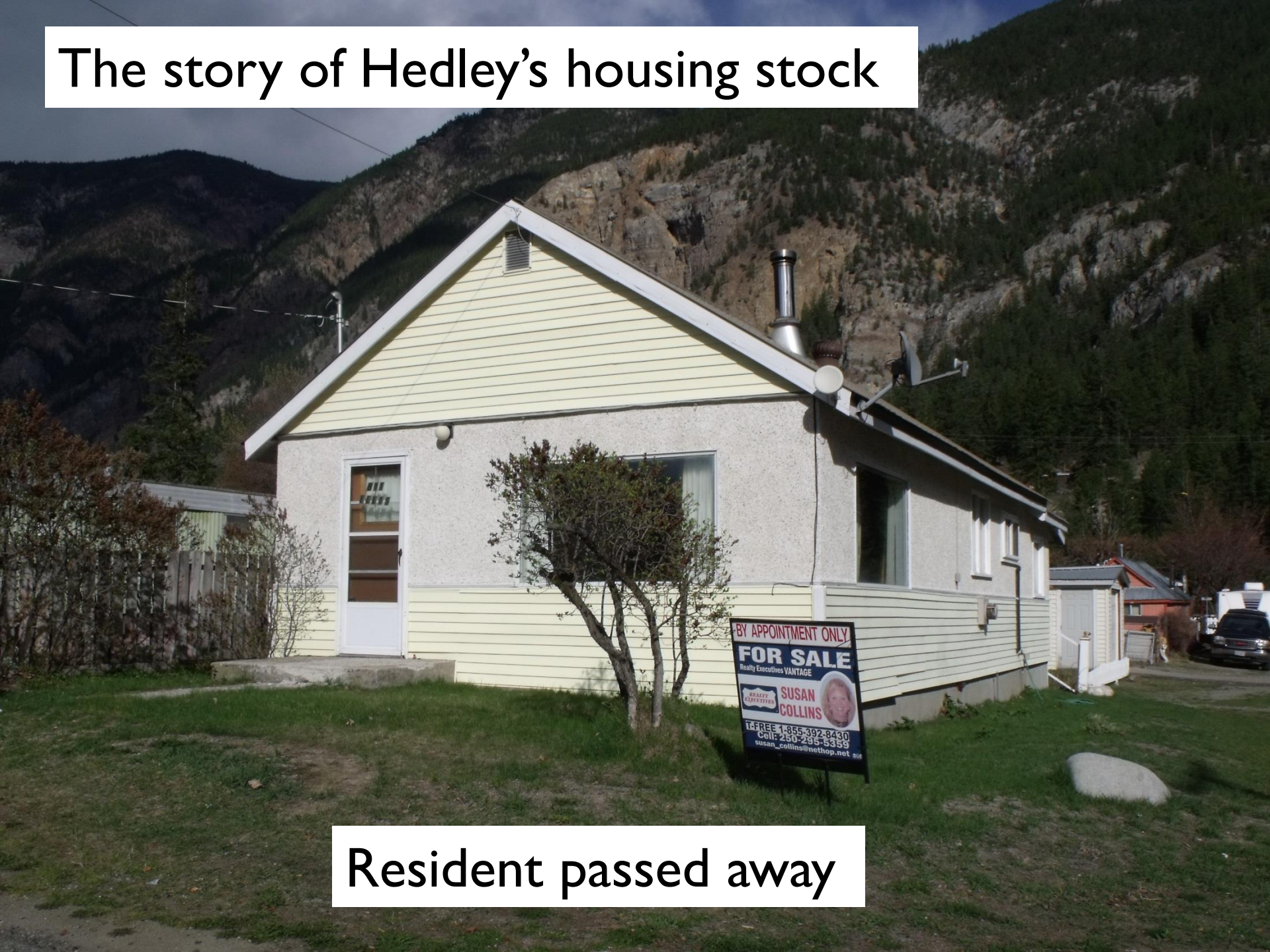
**Community Futures Okanagan Similkameen – June**



**Some Issues in Hedley – Typical of many smaller rural communities?**

Housing prices in the Similkameen Valley have gone up by more than 100% in the last ten years

# The story of Hedley's housing stock



Resident passed away

# The story of Hedley's housing stock



Residents both passed away, one needed a lot of care

# The story of Hedley's housing stock



Owner moved away for work

# The story of Hedley's housing stock

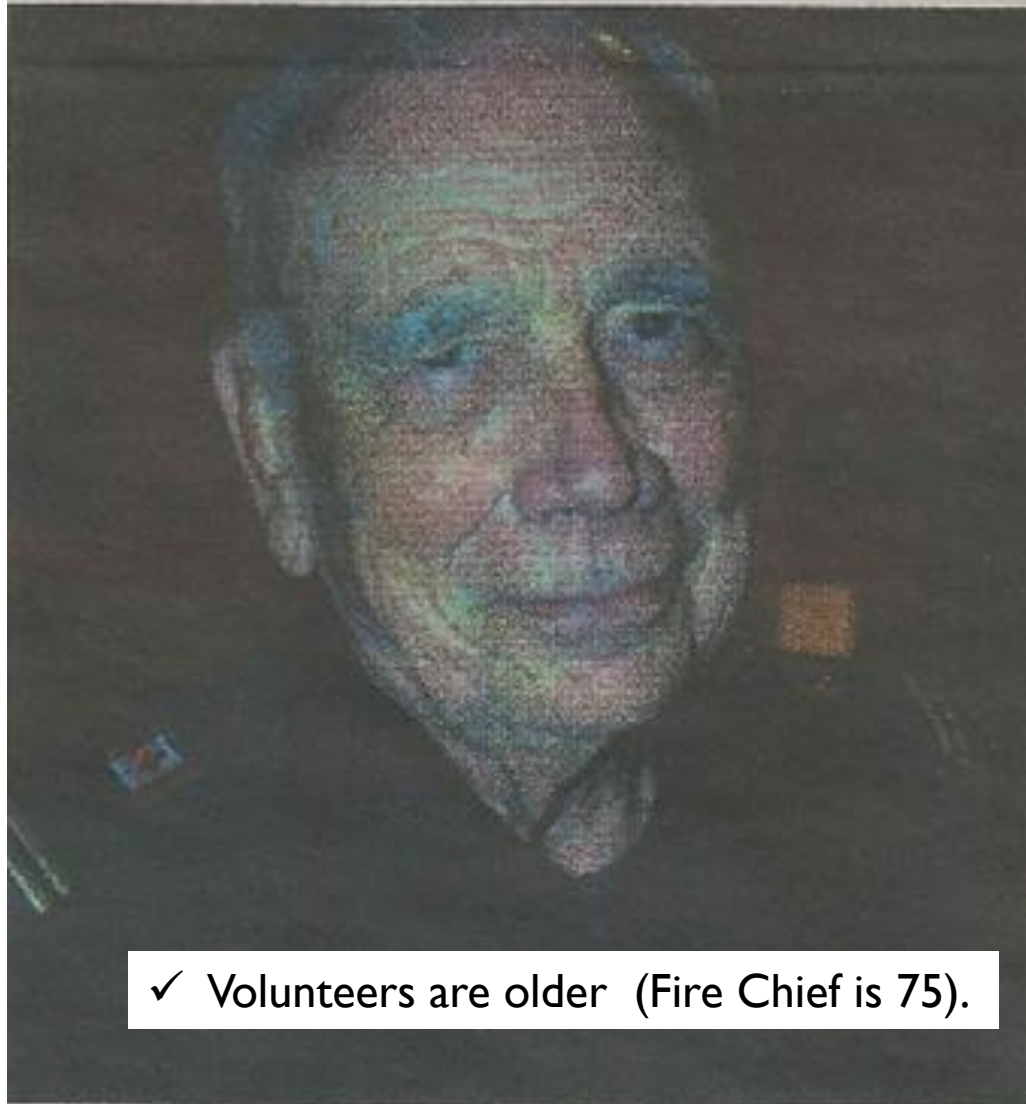


Owners moved away for medical services

## Some Issues in Hedley – Typical of many smaller rural communities?

- ✓ Many seniors want to live out their days in Hedley
- ✓ Little suitable new housing development occurring for seniors
- ✓ Difficult to sell a home
- ✓ Poor access to health care and home supports create insecurity about aging in place
- ✓ Youth growing up in Hedley must move away for work and education
- ✓ Many landowners do not want to rent so homes sit empty

Thursday, October 30 2014 **The Review**



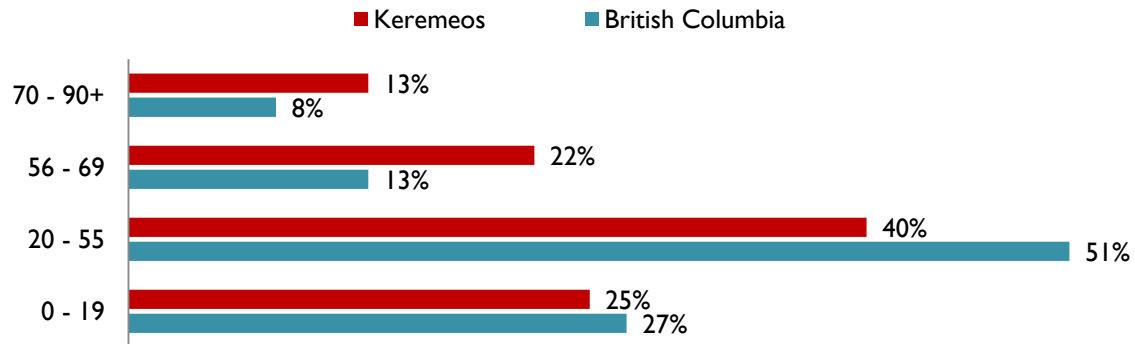
✓ Volunteers are older (Fire Chief is 75).

Graham Gore.

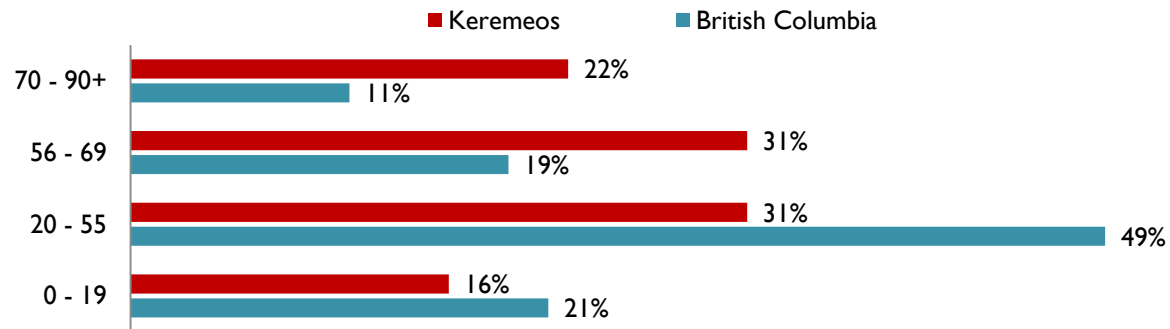


# And we aren't getting any younger.....

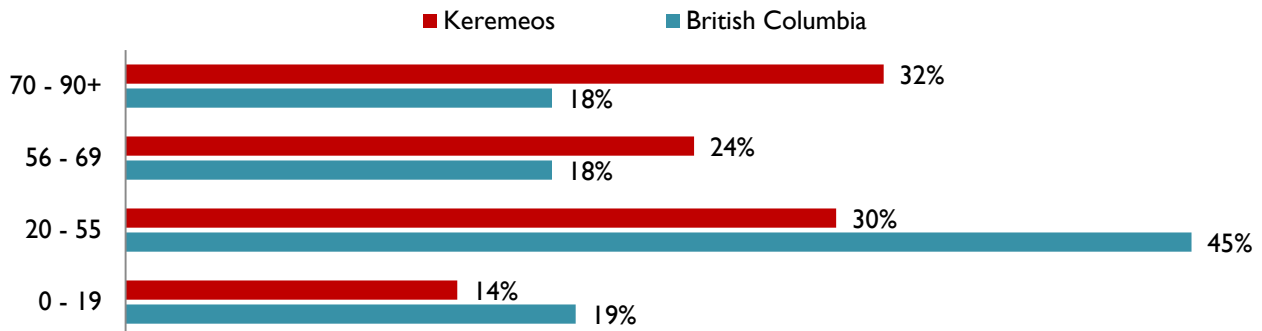
**1986**



**2013**



**2030**



# This is an issue for many small rural communities throughout the SIBAC region....

- **Of the 28 Local Health Areas in the southern interior only 3 – Fernie, Golden and Revelstoke – currently are still below the provincial average in the 56+ age grouping**
- **By 2030 only one Local Health Area in the southern interior is projected to have a percentage of their 56 + population age group less than the provincial average (Revelstoke at 31% compared to a Provincial average of 36%)**



# What is a CLT?

Community Land Trusts are local organisations set up and run by ordinary people to develop and manage homes as well as other assets important to that community, like community enterprises, food growing or workspaces. The CLT's main task is to make sure these homes are genuinely affordable, based on what people actually earn in their area, not just for now but for every future occupier

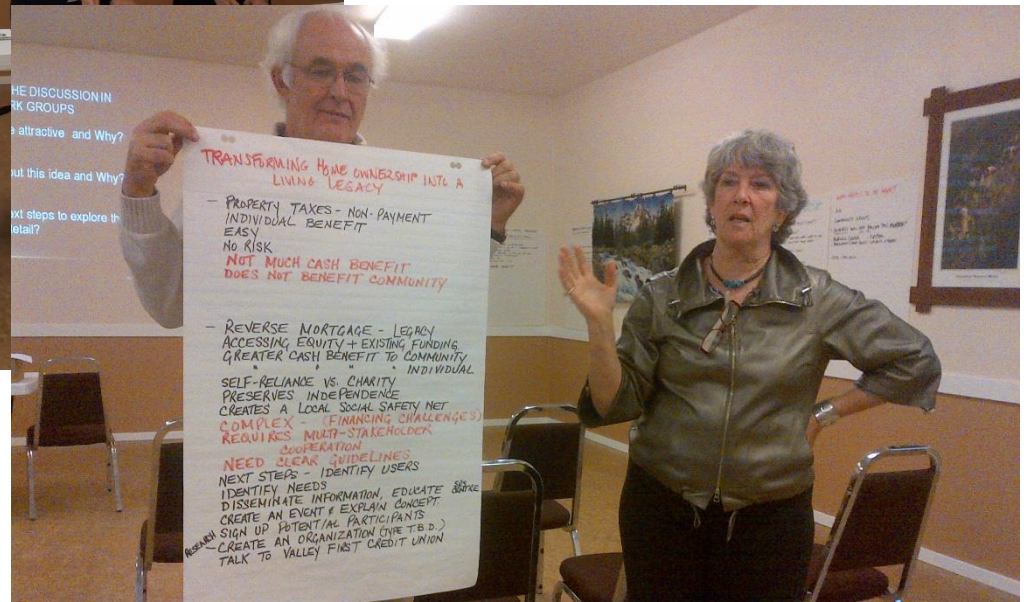
# Community Land Trust

2015  
THRIVING  
COMMUNITIES  
CONFERENCE

**SHELTER**

MARCH 19-21

# Project Update



## October 17 & 18 2014 : Workshop held in Hedley

- Workshop participants included Betty Brown from Interior Health
- Town Councillors from Keremeos and Princeton joined both the Friday evening lecture and the Saturday morning “roll up your sleeves” workshop

# Project Update



- **October 17 & 18 2014 : Community Workshop held in Hedley –**
- **25 attendees**
- **February – March 2015 Completion of Summary Report & Research Compendium Document (1500 + pages)**